



# LOCAL DEVELOPMENT FRAMEWORK

The building blocks for the future  
of the Lake District National Park



## Annual Monitoring Report April 2005 – March 2006

How well are we doing?



## **Contents**

- 1.0 Introduction**
- 2.0 Abbreviations**
- 3.0 Location and contextual maps of National Park**
- 4.0 Key findings**
- 5.0 Policy and plan making monitoring strategy**
- 6.0 Matters to address within the Annual Monitoring Report**
- 7.0 Contextual Indicators: Profile of the National Park**
- 8.0 Output indicators**
- 9.0 Process indicator: Progress on Local Development Scheme**

**Annex 1 : Summary of State of the Park Indicators**

## 1.0 Introduction

This is the second Annual Monitoring Report (AMR) prepared by the Lake District National Park Authority under the new Planning and Compulsory Purchase Act 2004.

We will produce this type of report each year and it will tell us two things:

1. Progress we have made to implement the Local Development Scheme – the timetable to create the Local Development Framework for the Lake District National Park.
2. The extent to which the policies set out in the different elements of new Local Development Framework are being achieved.

Each report will cover the period 1 April to 31 March. The final report must be submitted to the Secretary of State, via Government Office for the North West, by the end of December each year. We will also publish the report on our website.

An Annual Monitoring Report will present an analysis of the core output indicators for Local Development Frameworks ( identified in central government's 'Local Development Framework Core Output Indicators (Update 1/2005)').

It is however accepted in advice from Government Office for the North West that the first AMRs will not be able to cover everything set out in national guidance. And in respect to the Lake District National Park Authority, this is relevant because the process to create the new Local Development Framework only began in earnest from January 2006.

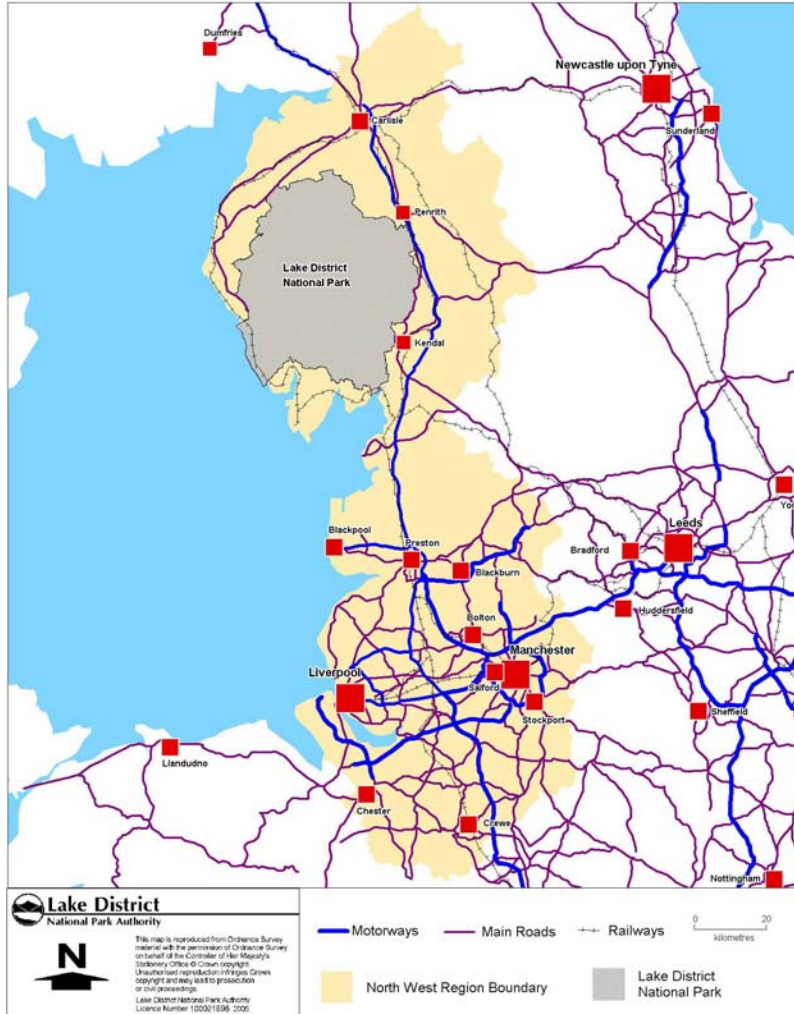
## 2.0 Abbreviations

Whilst we have made every effort to write plain English, there may be use of abbreviations in this document. The following list may assist:

AMR: Annual Monitoring Report  
BAP: Biodiversity Action Plan  
BVPI: Best Value Performance Indicator  
DPD: Development Plan Document ( part of the Local Development Framework )  
JSP: Joint Structure Plan  
LDD: Local Development Document ( part of the Local Development Framework )  
LDF: Local Development Framework  
LDNPA: Lake District National Park Authority  
LDO: Local Development Order  
LDS: Local Development Scheme ( referred to as ' the Scheme ' in this document )  
LSP: Local Strategic Partnership  
LTP: Local Transport Plan  
LUC: Land Use Consultants  
NWRA: North West Regional Assembly  
ODPM: Office of the Deputy Prime Minister  
PPG: Planning Policy Guidance  
PPS: Planning Policy Statement  
RPB: Regional Planning Board ( North West Regional Assembly )  
RPG: Regional Planning Guidance  
RSS: Regional Spatial Strategy  
SEA: Strategic Environmental Appraisal  
SOP: State of the Park Report  
SPD: Supplementary Planning Document  
SPG: Supplementary Planning Guidance

### 3.0 Location and contextual maps

Map 1: The Lake District National Park in the regional context



Map 2: Lake District National Park



## 4.0 Key findings 2005/2006

**4.1** The Cumbria and Lake District Joint Structure Plan was adopted in April 2006. We are now looking at the policies that we would like to save until the Local Development Documents are produced. The Regional Spatial Strategy is currently going through the Examination In Public process, the panels report will be out next year and will inform the development of our Local Development Framework policies.

**4.2** We have produced our second Local Development Scheme setting out our project plan for policy development over the next 3 years. All target dates were achieved during the monitoring period.

**4.3** We undertook extensive consultation between January and March 2006 with people and organisations to agree a new vision for the National Park 2006 – 2030, one that would lead both the Development and Management Plans. This consultation began the review of both the LDF and National Park Management Plan. The new vision was agreed by a new partnership of organisations in May 2006 – The Lake District National Park Partnership. You can find all the information and results of consultation to agree this Vision on [www.lake-district.gov.uk/visioning](http://www.lake-district.gov.uk/visioning). Given this agreement, it is this Vision which we propose should now guide the creation of the Local Development Framework.

**4.4** We adopted our Statement of Community Involvement (SCI) in June 2006, in which we have set ourselves challenging targets for consultation. So far we have undertaken a series of meetings, both daytime and evening, to explain and discuss the issues and options. The feedback from these meetings, so far, has been good.

**4.5** A major issue continues to be housing. We have begun to implement the policy of only providing housing to meet the needs of the locality. We adopted a Supplementary Planning Document to provide further guidance on the implementation of these new policies and the change in approach.

**4.6** Undertaking the Annual Monitoring Report has highlighted the amount of research that is still needed to be undertaken and the inadequacy of our in house systems which will need to be addressed. It has also helped us to identify the amount of resources, staff time and finances that are required to carry out effective monitoring.

**4.7** We have now met all of our milestones set within our Local Development Scheme over the past 18 months.

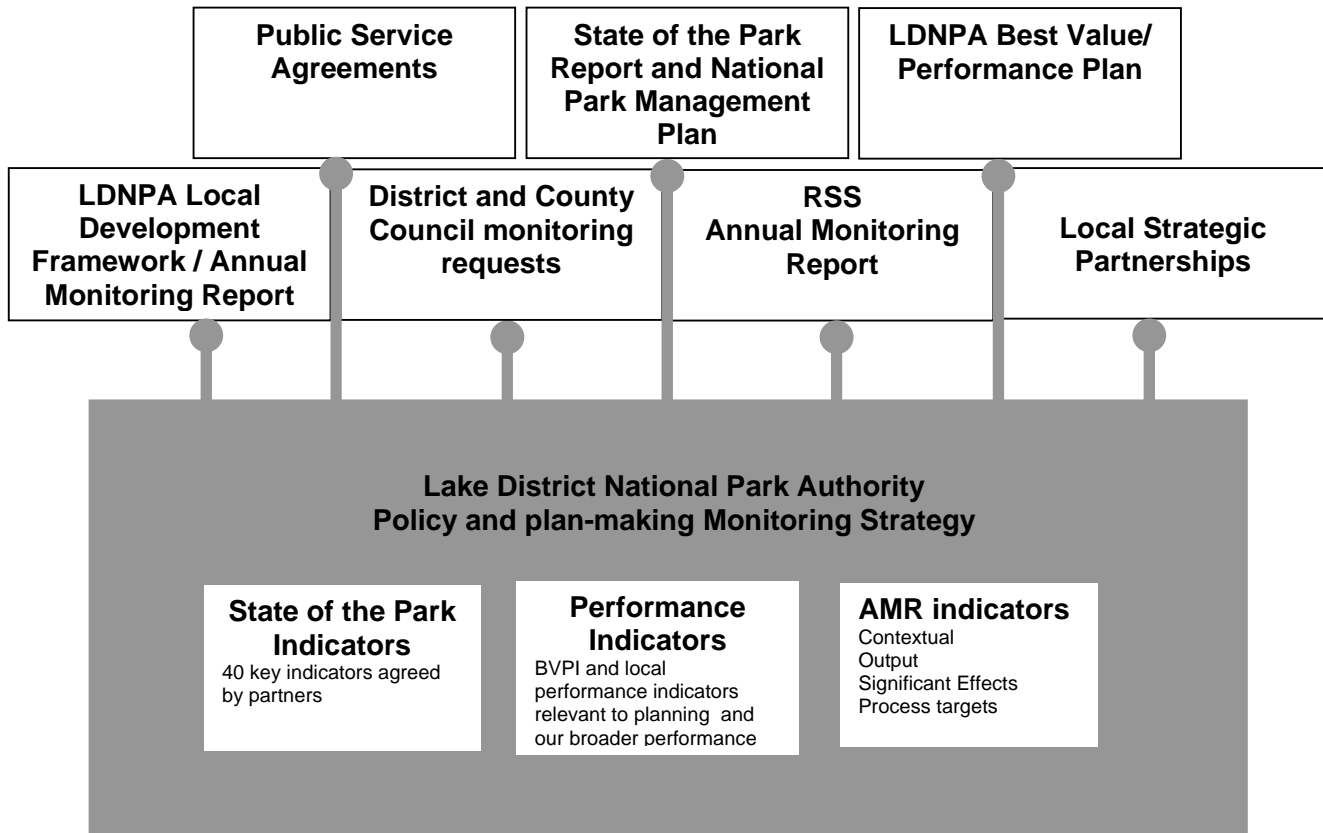
---

## 5.0 Policy and plan making monitoring strategy

### 5.1 Overview

Our monitoring strategy is linked to the preparation of many reports or the monitoring of different initiatives and activities, of which the AMR is one part. The following diagram explains the links between our strategy and other documents or initiatives.

**The Lake District National Park Authority Monitoring Strategy**



### 5.2 The need for monitoring in policy and plan making

Monitoring is essential to establish what is happening now, what may happen in the future and to enable us to compare these trends against existing policies and targets to determine what needs to be done. It provides crucial feedback and information on the performance of policy. Under the new planning system, with its focus on delivery of sustainable development and sustainable communities, monitoring takes on an added importance in providing a check on whether those aims are being achieved. Monitoring will also enable us to identify the need to review 'saved' Local Plan policies and future Local Development Documents, and respond to changing priorities and circumstances.

### 5.3 Linkages with RSS

We need to work together with NWRA - North West Regional Assembly - to ensure that our respective monitoring frameworks complement each other and avoid duplication. Our AMR must be submitted by December each year. The NWRA's monitoring submission for Regional Spatial Strategy is due at the end of February each year.

Future opportunities for joint working should be explored and timescales developed and agreed to meet the respective AMR submission deadlines.

#### 5.4 Policy context

Future reports will need to show how policy monitoring links to national targets such as Public Service Agreement targets relating to the delivery of sustainable communities, particularly PSA targets 2,4,5,6 and 8 (See page 5 of LDF Monitoring: A Good Practice Guide for details). It will also be necessary to make the linkages with sustainability appraisal and SEA. The integration with other initiatives such as Community Strategies, particularly through the adoption of common targets and indicators where possible and appropriate will need to be developed. As a National Park Authority, we need to ensure that policies in the Management Plan and the Development Plan are complimentary. The Strategy therefore seeks to ensure that close links between monitoring for the State of the Park Report and the LDF are maintained and further developed in a consistent manner.

#### 5.5 Best Value / Performance Management Framework

As a Best Value Authority, under the terms of the Local Government Act 1999, we have a duty to produce an annual Performance Plan which shows continuous improvement in the way we work. The indicators we use to monitor performance include national Best Value Performance Indicators and family indicators agreed by National Park authorities. This year we have developed a new set of local indicators. Together, these performance indicators, will allow us to measure progress on delivering our priorities and help us improve our services.

We have adopted a Performance Management Framework, which states how our performance measures are monitored across the organisation, and introduced quarterly reporting on performance measures to the Executive Board (made up of the National Park Officer and three directors) and a working group of Scrutiny Committee.

#### 5.6 Risk management

The programme for the delivery of our monitoring strategy is considered challenging but realistic. However, there are risks and mitigation measures in place as follows:

<b>Risk analysis</b>	<b>Mitigation measures</b>
Staff health - all the more pertinent given the small size of the core team preparing the documents	Ensure appropriate workloads and variety of work is provided. Regular monitoring and support from managers and directors.
Use of new monitoring database – the investment we have made in the new database of planning applications needs to be realised within the broader monitoring strategy	Ensure staff are trained and have the processes/resources available to input appropriate information which can be extrapolated for broader monitoring. Ensure the database has continued investment
Funds – financial pressures on the Lake District National Park Authority’s budget could affect the resourcing of the programme.	A new three year financial strategy for the Lake District National Park Authority is being developed. The long term commitment to all aspects of the LDF are understood and agreed. However, we need to uplift the resources we allocate to monitoring. We will specifically need to ensure we have resources available for external consultant support if required.

<p>Stakeholder/partner input – some stakeholders /partners have a potential major input into monitoring but there may be other demands on their time. There are also conflicting interests and it will be a challenge to encourage the collation or extrapolation of data for the National Park boundary</p>	<p>We will regularly liaise with our partners. The new State of the Park Partnership Group has shown that joint working is possible. It is however time consuming and staff intensive to make this work and it will be a continuing requirement of the Lake District National Park Authority to lead the partnership.</p>
--	---

---

## 6.0 Matters to address within the Annual Monitoring Report

### 6.1 Annual Monitoring Report requirements

We are required to ensure the AMR contains the following information:

I. Whether the timetable and milestones for the preparation of documents set out in the LDS have been met or progress is being made towards meeting them or, where they are not being met or not on track to being achieved, the reasons why
II. Whether policies and related targets in LDDs have been met or progress is being made towards meeting them or, where they are not being met or not on track to being achieved, the reasons why
III. What impact the policies are having in respect of national and regional targets and any other targets identified in LDDs and not covered by (ii) above. Local Planning Regulation 48(7) specifically requires information to be provided on net additional dwellings and LPAs should produce housing trajectories to demonstrate how policies will deliver housing provision in their area.
IV. What significant effects implementation of the policies is having on the social, environmental and economic objectives by which sustainability is defined and whether these effects are as intended
V. Whether the policies in the LDD need adjusting or replacing because they are not working as intended
VI. Whether the policies need changing to reflect changes in national or regional policy
VII. The extent to which any LDO, where adopted, or Simplified Planning zone is achieving its purposes and if not whether it needs adjusting or replacing; and
VIII. If policies or proposals (including the LDO or SPZ scheme) need changing, the actions needed to achieve this.

### 6.2 Indicators

Indicators are measures of information or data that show us what is happening at different spatial levels. They are helpful in giving an overview of what changes are occurring and the effects on environmental, social and economic conditions and they are also useful in examining the implementation of policies.

**Table 1: The different types of indicator within the Annual Monitoring Report**

INDICATOR	NUMBER	PURPOSE/DESCRIPTION	UPDATING TIMEFRAME
Contextual	Small set of highly relevant indicators	Wider social, environmental and economic indicators	Every 5 years

Output	Core Output	As listed in OPDM's 'LDF Core Output Indicators' Update 1/2005	To measure quantifiable physical activities that are directly related to, and are a consequence of, the implementation of planning policies.	Reviewed by ODPM on regular basis. Update annually and report in AMR for 1 Apr to 31 Mar.
	Local Output	3-4 per policy objective		Review on regular basis. Report on each year in AMR for 1 Apr –31 Mar.
	Housing trajectories	See core indicator 2a of OPDM's 'LDF Core Output Indicators' Update 1/2005		Establish through evidence base for LDD production. Update annually and report in AMR
Significant Effects			Identified through Sustainability Appraisal	Report annually in AMR where possible, and whenever SA done for an LDD
Process Targets			Monitor LDS delivery	Report annually in AMR

### **Contextual Indicators**

These indicators describe the wider social, environmental and economic background against which policy operates. They aim to enhance understanding of the wider context for the development of spatial policies.

### **Core Output indicators**

These are set indicators which authorities are required to monitor as a consistent data source which can be used to compare authorities and inform other organisations.

### **Local indicators**

These are indicators which address outputs not covered by the other indicators and which may reflect local circumstances and issues. These may therefore vary over time.

### **Significant effects indicators**

These indicators assess the significant social, environmental and economic effects of policies. They inform monitoring of the impacts of policies on sustainability. They will be linked to the sustainability appraisal objectives and indicators.

### **Process targets**

These targets monitor the Local Development Scheme delivery via the targets and milestones set out within and assesses the need for any new documents to be introduced. Indication is made of whether the preparation of each document is on, behind or ahead of target.

## 7.0 Contextual indicators

### 7.1 General overview

Appropriate Contextual Indicators describing the wider social, environmental and economic background against which policy operates will be created as the LDD progresses and particularly as part of the development of the Core Strategy, which began in January 2006.

One considerable problem facing us is the unavailability of data relevant to the National Park. Data needs to be extrapolated according to the national Park boundary and this is often not possible. Much of the data generally available is aggregated for county-wide, District, Parish or Ward boundaries which do not fit neatly with the National Park boundary, making data comparisons difficult or inaccurate. The National Park Authorities are currently lobbying NOMIS, official labour market statistics, in an attempt to get data aggregated for National Parks in the same way as District Authorities to enable the accurate presentation of data sets for individual National Park areas.

The following Table summarises some of the key characteristics, providing a profile of the National Park and compares this with Cumbria, the North Yorkshire Moors National Park and Exmoor National Park. These key characteristics, along with the data extracted from the Socio-economic study by Land Use Consultants (see overleaf) will act as a baseline to inform subsequent updates.

Profile area	Data	Source	Cumbria wide	North York Moors NP	Exmoor NP	
Total National Park area	2292 sq km	<i>OS mapping</i>		1436	692	
<ul style="list-style-type: none"> <li>• South Lakeland</li> <li>• Eden</li> <li>• Allerdale</li> <li>• Copeland</li> </ul>	786 sq km 456 sq km 558 sq km 512 sq km					
National Park Authority Ownership/Management	90 sq km (3.9%)		<i>NPA</i>		n/k	n/k
Resident population 2001	41650		<i>2001 census</i>	487607	23939	10873
<ul style="list-style-type: none"> <li>• Age 0-16</li> <li>• Age 16-64</li> <li>• Age 65+</li> </ul>	6266 (15.04%) 26429 (63.2%) 9076 (21.7%)			91931 (18%) 306346 (62%) 89330 (18%)	4063 (17%) 15057 (63%) 4780 (20%)	1503 (13.9%) 8008 16-74 (74%) 1362 74+ (12.6%)
Number of settlements with 3000+ population	3			16	0	0
Number of Parishes	80			290	n/k	43
Household spaces	17937	<i>2001 census</i>	209027	10086	5675	
<ul style="list-style-type: none"> <li>• Vacant, 2<sup>nd</sup> home or holiday accommodation</li> <li>• Owner occupied</li> <li>• Shared ownership</li> <li>• Rented</li> <li>• Housing association</li> </ul>	5064 (28%) 12114 121 3539 (19%) 1250 (7%)		8% 71% 11% 7%	12% 73% 13% 3%	n/k 68.2% 1018 n/k n/k	

• Local Authority	913 (5%)		9%	5%	1.14%
Economically active population	31286		354183	15000	
• Unemployment	1.9%	<i>2001 census</i>	1.9%	1.5%	2.8%
Moorland	104979 ha	<i>MLC</i>	n/k	49900	n/k
Woodland	28931ha		n/k	31850	n/k
Farmland	76815 ha		n/k	57300	n/k
SSSIs	41947 ha	<i>NPA GIS</i>	9114	47097	n/k
NNRs	1200 ha		6243	169	n/k
LNRs	410 ha		70	1012	n/k
Special Areas of Conservation Special Protection Areas, Ramsar Sites	36037 ha		71160	n/k	n/k
ESA designation	216403 ha	<i>DEFRA</i>	28313	n/k	n/k
ESA agreements	160211 ha			n/k	n/k
Coastline	80km	<i>NPA GIS</i>	n/k	42	n/k
Walls and banks	4730km	<i>MLC</i>	n/k	2041	n/k
Hedgerows	3443 km	<i>MLC</i>	n/k	2554	n/k
Watercourses	9158 km	<i>NPA GIS</i>	n/k	4272	n/k
Scheduled ancient monuments	275	<i>NPA</i>			
<b>Profile area</b>	<b>Data</b>	<b>Source</b>	<b>Cumbria wide</b>	<b>North York Moors NP</b>	<b>Exmoor NP</b>
Public footpaths	2133km	<i>Defin. Map</i>		1506	438
Public Bridleways	844km			749	464
Other PROWs	33 km	<i>NPA</i>		14	64
Land open for public access	46%	<i>NPA</i>		n/k	n/k
Visitor days	22 million			8.6 million	n/k
Number planning applications (05/06)	1297	<i>NPA</i>		769 (02/03)	n/k
Number of Authority members	26	<i>NPA</i>		26	n/k

There are currently 26 Authority members however; following the local elections in May 2007 there will be only 22 members.

In October 2004 we commissioned Land Use Consultants to prepare a social and economic profile of the Lake District National Park. The full report is available from [www.lake-district.gov.uk](http://www.lake-district.gov.uk) however some of the key elements of the study and diagrams are included below. Land use Consultants utilised post code information where this was available to provide a proportional weighting of the data to secure a closer 'fit' to the national park boundary and give more accurate data for the national park as a whole. This work has provided us with a methodology to enable us to monitor this data more accurately in future.



## 8.0 Indicators

### 8.1 Transport

**Transport**– We will promote the development and use of sustainable travel choices and reduce the adverse impacts of motor traffic on people, the environment and landscape character.

Type of Indicator: 3a No/Ref:	Indicator: Amount of completed non-residential development within UCOs A, B and D complying with car parking standards set out in the local development framework
Data Source:	LDNPA Planning Application database
Spatial Scale Measured:	National Park wide
Objective/Commentary:	
Policy T9 of RPG and Policy RT6 of the draft RSS require local authorities to develop maximum parking standards for destinations in accord with regionally specified ceilings. Policy T32 of the Joint Structure Plan seeks to establish this standard in a consistent manner with neighbouring authorities. Further assessment of this policy will be conducted through the LDF.	
Indicator Measure	
Where Set:	RPG Policy T9; draft RSS Policy RT6
Future Actions/Comments:	
The information needed to support this indicator is not currently available, but mechanisms have been put in place through our Development Control Planning Applications database (Swift) to facilitate the capture of this data in the future. It will be available for the next AMR. Compliance will be measured against the standards set out in the policies of the Joint Structure Plan.	

Type of Indicator: 3b No/Ref:	Indicator: Amount of new residential development within 30 minutes public transport time of: a GP; a hospital; a primary school; a secondary school; areas of employment
Data Source:	LDNPA Planning Application database
Spatial Scale Measured:	National Park wide
Objective/Commentary:	
Joint Structure Plan Policy ST1 seeks to sustain both urban and rural communities through a series of measures. 'Good transport services and communications linking people to jobs, schools, health and other services' is one of the criteria which provides a link with this indicator and will help to establish information to assess the effectiveness of our policy to provide for sustainable development.	
Future Actions/Comments:	

Information not available at present. Discussions have taken place with Capita, (external business agents) who may be able to provide us with the information in the future. We will investigate this further in partnership with the other Districts in 2006. Within our Authority, the GIS Developer is currently exploring the possibility of purchasing additional computer software to work alongside our planning applications database, which may provide this information in the future. The information should therefore be available for the next AMR, but will be subject to resources available at the time. In addition to this, a contract to collect valuable information on service provision was commenced but was halted by the outbreak of the Foot and Mouth disease in 2001. In the Summer of 2005 a pilot exercise was conducted by the our Volunteers Service to survey the service provision in settlements within the National Park. This proved successful and will be rolled out more comprehensively during 2006.

## 8.2 Flood Protection and Water

**Flood Protection and Water**– We will resist development in areas at risk from flooding unless appropriate and acceptable flood prevention measures can be implemented as part of the development. New development should be limited to where adequate water supply already exists or where the provision of water resources can be made without adversely affecting river flow, water quality, amenity and nature conservation interests.

Type of Indicator: 7 No/Ref:	Indicator: Number of planning permissions granted contrary to the advice of the Environment Agency on grounds of flood defence or water quality.
Data Source:	Environment Agency Planning Application Data and our own planning application data
Spatial Scale Measured:	National Park wide
Objective/Commentary:	
Policy ST3 of the Joint Structure Plan identifies the need to reduce the risk of flooding within new development by a series of criteria. This will be explored further through the production of the LDF.	
Analysis/Policy Assessment:	
All of the planning applications on the Environment Agency list (objections on flood risk grounds) for 1 <sup>st</sup> April 2005 to 31 <sup>st</sup> March 2006 were checked manually (16 applications). Of these, 5 were approved against EA advice 2 were refused in accordance with EA advice and in 7 cases the EA objection was withdrawn (2 of the planning applications are yet to be determined).	
There were no planning applications objected to by the Environment Agency on water quality grounds.	

### Review of saved policies/LDDs:

The policies in the Local Plan (UT3,UT4 and UT5) continue to provide the guidance necessary for our Development Control Officers to fulfil their day-to-day functions and so remain valid in the immediate term.

The Cumbria and Lake District Joint Structure Plan 2001 – 2016 was adopted in April 2006. Policy ST3 on principles applying to all new development includes reference to reducing the risk of flooding and the need to avoid reductions in the quality and quantity of groundwater and surface waters.

The Issues and Options Report on our Core Strategy sets out a range of spatial

development proposals which when developed to Preferred Options stage will inform the need to save or not save the existing Local Plan policies. Therefore at this stage in the process it is likely that we will save the relevant policies and review their status in the 2006-07 Annual Monitoring Report.

**Future Actions/Comments:**

We will liaise with our Development Control Officers to examine ways in which this data can in the future be captured through our planning applications database, rather than being done manually. We will continue to work with the Environment Agency to provide comprehensive data.

According to PPG 25, Local Planning Authorities are required to work with the Environment Agency to produce a Strategic Flood Risk Assessment (SFRA). We have worked in partnership with Copeland, Eden and South Lakeland Districts, the County Council and the Environment Agency to produce a SFRA. Its publication is imminent and its contents will be used to inform the policies in our LDF.

### 8.3 Biodiversity

**Biodiversity**– The Lake District is rich in wildlife and geological features. There are over 100 SSSI's covering nearly one fifth of the National Park. The international wildlife importance of over 40 of these sites is further recognised by additional designation as Natura 2000 sites. There are also three Ramsar, eight National Nature Reserves and two Local Nature Reserves designations and various species of European Importance. We will manage all of these species, habitats and geological features sustainably.

<b>Type of Indicator:</b> 8	<b>Indicator:</b> Change in areas and populations of biodiversity importance, including:
<b>No/Ref:</b>	(i) change in priority habitats and species (by type) (ii) change in areas designated for their intrinsic environmental value including sites of international, national, regional or sub regional or local significance.
<b>Other Indicator Refs:</b>	
<b>Data Source:</b>	
<b>Spatial Scale Measured:</b>	National Park wide
<b>Linkage with other strategy/plan:</b>	Lake District National Park Management Plan Policy NC15 The Lake District Still Waters Partnership Cumbria Biodiversity Action Plan High Brown Fritillary Action Group Flora in the Fells
<b>Objective/Commentary:</b>	
We are actively involved in many partnership groups and working to improve information available about biodiversity and how we use it to ensure good decision making. The Joint Structure Plan reinforces the need to afford the highest level of protection to sites and species identified for their national or international conservation importance. Development and other land use changes in these areas or within their settings that are detrimental to their characteristic will not be permitted unless there are exceptional circumstances to dictate otherwise.	
<b>Review of saved policies/LDDs:</b>	

The saved policies in the Local Plan (NE10, NE12, NE13 and NE18) continue to provide the guidance necessary for our Development Control Officers to fulfil their day-to-day functions and so remain valid in the immediate term.

The Cumbria and Lake District Joint Structure Plan 2001 – 2016 was adopted in April 2006. Policies E34 and E35 seek to protect areas and features of national and international conservation importance, and other areas not of national or international importance. Policy E39 seeks to enhance both the built and natural environment.

The Issues and Options Report on our Core Strategy sets out a range of spatial development proposals which when developed to Preferred Options stage will inform the need to save or not save the existing Local Plan policies. Therefore at this stage in the process it is likely that we will save the relevant policies and review their status in the 2006-07 Annual Monitoring Report.

#### Future Actions/Comments:

We have worked this year with partners from the Cumbria Biodiversity Action Plan and the Cumbria Biological Data Network to identify a comprehensive list of priority habitats and species which are relevant to the National Park. The availability and quality of data relating to all of these priority habitats and species is now being reviewed.

The extent of some priority habitat is well recorded and this data is already checked as part of our development control process. For others habitat types, the data layers are not yet comprehensive. We are currently assessing the status of each data set and identifying any gaps in the information. This will allow use to prioritise future data needs.

The nature of records for priority species is variable and there is not currently enough detail in these layers to rely on all possible impacts to be flagged up through initial checks of the spatial data. Improvement in the resolution of these data sets in the future will help. The Authority is also using existing spatial data to work on the improvement of validation checklists to ensure that adequate levels of information are available with respect to planning decisions at the outset.

Although it is relatively easy to identify applications where an interest feature has been flagged up by the development control GIS checking procedure, it is less easy to assess the outcome for biodiversity in relation to the decisions that have been made. Currently, checking lists manually is the only available option. Options for improving the internal processes for reporting on planning decision outcomes in relation to biodiversity are being explored.

## 8.4 Renewable Energy

**Renewable Energy**– Small scale renewable energy developments particularly those which are domestic/community based and are developed on a local scale will be positively encouraged provided that they can be assimilated into the area and would not have an adverse impact on local interests.

Type of Indicator: 9 No/Ref:	Indicator: Renewable Energy capacity (MW) installed by type	
Other Indicator Refs:		
Data Source:	LDNPA Planning Applications database	
Spatial Scale Measured:	National Park wide	
Objective/Commentary:		
During the development of the now adopted Joint Structure Plan, a comprehensive assessment of renewable energy potential in the County was undertaken by AXIS Planning Consultants to inform the policies.		
Indicator Measure		
Actual Target (if any):	443 MW for Cumbria to 2015	
Where Set:	Provisional target set in the Interim draft revisions to RSS	
Analysis/Policy Assessment:		
Last year in our AMR, we reported that the RSS for the NW region is seeking to increase the Renewable Energy Targets for Cumbria. We were concerned that this target is higher than that figure set out in the partial review of the Regional Planning Guidance. Work on the RSS is still ongoing, and we are continuing to lobby for a new capacity study to be undertaken in line with the one done for the Joint Structure Plan, to establish uniform research methodology and to inform the emerging figures of the RSS. We hope to be able to report more fully on progress on this in the next AMR.		
Illustrations, charts, etc:		

7/1998/2251	Installation of 6 sq m (surface area) of solar collectors to rear inclined roof surface involving no structural alteration and not increasing volume of property	Whelpo House, Caldbeck	Listed Building Consent to Alter/Extend		
7/1999/4074	Conversion of redundant mill to single dwelling, new turbine house, new septic tank and pump chamber, new semi-underground garage	Whitbeck Mill, Whitbeck, Millom	Dwellings Minor		
7/1999/5584	To erect a 2.5 kw wind turbine	Barnscar Fold, Ayside	All Other Developments Minor		
7/2001/4058	Small scale hydro electric scheme to provide electricity to the youth hostel and camping barn	High Gillerthwaite, Ennerdale	All Other Developments Minor		
7/2001/5223	Installation of roof mounted solar panels	No 2 Orchard Cottages, Witherslack	Householders Development		
7/2001/5536	Sluice gates for hydro electric scheme	Backbarrow Weir, Backbarrow	All Other Developments Minor		
7/2003/3118	27 wind turbine generators	Whinash, Bretherdale and Roundthwaite Commons, Borrowdale, Tebay	All Other Developments Major		
7/2003/5286	Hydro Electric Scheme, Dam, Pipeline and Power House	Church Beck, Coniston	All Other Developments Minor		
7/2003/5513	The installation of three 1.3m sq solar collectors, positioned on the front inclined roof surface of the property	3 Grassgarth Cottages, Grassgarth Lane, Ings	Not Required on PS1 / PS2 Reports		
7/2004/2143	Installation of four 1.3m sq surface area solar collectors on the south west facing roof incline	48 Lakeland Park, Keswick	Householders Development		
7/2004/2264	Install a micro hydro power generator on Barrow Beck utilising the existing weir and constructing a small brick turbine housing and associated pipework	Barrow Beck, adjacent Barrow House, Borrowdale	All Other Developments Minor		
7/2004/5840	Solar panels	Nether Close, Underbarrow	Not Otherwise Included		
7/2005/2131	Installation of solar panels on south facing roof	Margaret Brow, Grange, Keswick, CA12 5UQ	Listed Building Consent to Alter/Extend		
7/2005/4003	Small hydro electric scheme to provide power for Low Gillerthwaite Field Centre, requires one new single storey building to house turbine and generating plant	Adjacent to Forestry Buildings, High Gillerthwaite, Ennerdale	All Other Developments Minor		
7/2005/4063	Small hydro electric scheme to provide power for the field centre, requires one new single storey building	High Gillerthwaite, Ennerdale, Cleator, CA23 3AX	All Other Developments Minor		
7/2005/5199	First floor extension over existing single storey extension to rear, solar panel and entrance canopy to front	3 Brow Edge, Backbarrow	Householders Development		
7/2005/5531	Provision of a bathroom, heating, erection of a wind turbine, photovoltaic cells and a solar twin water heater. New septic tank and soakaway	Rose Castle Cottage, Tarn Hows, Coniston, Cumbria, LA22 0PT	Householders Development		

#### Future Actions/Comments:

This year, we are still about to provide a list of all renewables applications by type (see above). However we are still unable to provide the MW of installed capacity because we have failed to monitor the status of these applications consistently. Although we have been looking at this and our use of swift for these purposes, we have not made as much progress on this monitoring as we had hoped this year, and so, we are still unable to provide MW installed data in this report. We will continue to develop our monitoring for renewables over the coming year, and hope to have the data required available for the next AMR.

## 8.5 Housing

### Housing-

Each year the Lake District National Park Authority monitors the number of housing completions through its Housing Land Availability Survey. Effective monitoring helps to identify whether local plan policies are successful in delivering new housing which is consistent with the objectives set out by the Lake District National Park Authority planning policies.

In addition to meeting overall requirements, national and regional policy guidance places emphasis on using land sustainably and creating mixed and inclusive communities, which offer a choice of housing and lifestyle. This means giving priority to the re-use of previously developed (brownfield) land for housing before releasing further Greenfield land; avoiding low density development which is wasteful of land; and providing a mix of dwellings types, sizes and tenures which help to meet the needs of local people. The effectiveness of local plan policies in this regard also needs to be monitored.

The Annual Monitoring Report provides information relating to houses that were built in the period between 1 April 2005 and 31 March 2006, or which had planning permission at 1 April 2006.

### Contextual

#### Household composition analysis for the National Park

Total households	One person	Couples	Couples no children	Couples with children	Lone parents	Other	Pensioners
39513	5394	23220	7780	15440	2637	3656	4602
Percentage	13.65	58.77	33.51	66.49	6.67	9.25	11.65

Source: Census 2001

Compared with the rest of Cumbria, the National Park contains more one person households (which include retired people), particularly in the towns, slightly fewer couples but significantly more couples without children. There are fewer lone parent households, and more people of pensionable age.

## 8.6 Housing Trajectory

<p>Type of Indicator: CORE No/Ref: 2a (i) (ii) (iii) (iv) (v)</p>	<p>"Indicator: Housing Trajectory showing: (i) net additional dwellings over the previous five year period or since the start of the relevant development plan document period, whichever is the longer (ii) net additional dwellings for the current year (iii) projected net additional dwellings up to the end of the relevant development plan period or over a ten year period from its adoption, whichever is the longer (iv) the annual net additional dwelling requirement (v) annual average number of net additional dwellings needed to meet overall housing requirements, having regard to previous years' performances</p>
<p>Data Source: Spatial Scale Measured: Linkage with other strategy/plan:</p>	<p>Housing Land Availability Survey 2006 National Park Wide Regional Planning Guidance for the North West (RPG 13) <i>The North West Plan</i> Draft Regional Spatial Strategy for the NW <i>Planning Cumbria</i> -Cumbria and Lake District Joint Structure Plan 2001 - 2016 Cumbria Sub-Regional Housing Strategy Monitoring Framework Lake District National Park Management Plan Policy SC1 LDNPA Business Plan 2006 – 2009</p>
<p>Objective/Commentary:</p>	
<p><b>Business Plan 2006-2009 Outcome 4:</b> <i>Coordinate and develop balanced housing markets which will provide opportunities for people to live and work in the community</i></p> <p>The quality of life and landscape offered by the Lake District National Park results in a very high level of demand for housing. This is complicated by the continuing trend for people to move from towns into the countryside and those buying second/holiday homes as a form of financial investment for the future. The need to conserve the qualities which make the park so special dictate that this high demand cannot be met by increasing the supply of new general housing. Consequently, those who wish to live in the area compete for houses on the open market and this results in house prices becoming exceptionally high.</p> <p>The need to address the housing issue is a priority for the Authority as it is a key element in supporting and maintaining our vibrant communities. Housing policies within the now adopted Cumbria and Lake District Joint Structure Plan encourage housing development which meet the housing needs of the locality which are supported by housing needs surveys and whereby local occupancy is secured in perpetuity through a Section 106 or planning condition.</p>	
<p>Indicator Measure</p>	
<p>Actual Target (if any):</p>	<p>None set during this period</p>
<p>Where Set:</p>	
<p>Actual Achieved Measure:</p>	
<p>Analysis/Policy Assessment:</p>	

The relevant planning policies for 2005-2006 period were:

- Regional Planning Guidance for the North West (RPG13) – revised, Policy UR7; UR8 & UR9
- *Planning Cumbria* Cumbria and Lake District Joint Structure Plan 2001 – 2016 Modifications, September 2005. H17, H20, H21 & H22. A document not adopted until April 2006 but was given considerable weight at this time.
- Lake District National Park Local Plan (1998) H1 – H5, H8

RPG13 sets out an annual average rate of housing provision for Cumbria and the Lake District of 1,170.

The Joint Structure Plan Policy H17 on the recommendation of the panel, has included the statement that 'the unique characteristics of the Lake District National Park means that housing will only be permitted to meet the needs of the locality, in line with Policy ST12. No specific level of provision is set within the National Park but any permissions that are granted within the Park will not be counted against District Council targets.' The Authority has taken the view that because we will only provide housing to meet the need of the locality it is not necessary for us to have an allocation, because it will not be of a scale that will make a significant contribution to the Regional target.

Local Plan policies sought to ensure that housing development in the Lake District concentrated on meeting the needs of those people who live and work in the Park, taking account of changing employment patterns. A local assessment of need will normally be required to enable the Authority to determine the acceptability of proposals for 'local needs' and affordable housing development. Up until 2004 the request for housing need surveys was fairly adhoc and in some circumstances this will have led to a small element of unfettered housing on infill plots in our larger settlements. Since 2004, we have adopted an approach which uses the methodology set out by Cumbria Rural Housing Trust, which is proving successful in providing robust evidence of housing need. (See table below.)

The suite of housing policies introducing in the Joint Structure Plan has significantly tightened up our decision making process ensuring that housing development will only be permitted where the development is of a scale and type which is designed to contribute to the identified housing needs of the locality which is secured by condition or legal agreement or is a scheme usually provided by a Registered Social Landlord. A Supplementary Planning Document on Demonstrating Housing Need was adopted in June 2006, which establishes the correct approach to be used in identifying local housing need.

In terms of giving a housing trajectory for the period 2005 – 2006, we have limited information. We are able to report on the number of completions, include the suggested annual target figure as expressed in draft RSS and convey the known housing need of the locality as identified through our housing need surveys. We are in the process of gathering a comprehensive housing needs survey of all the Parishes within the LDNP, but this is dependant on resources and so this is something we are unable to report on fully at this time.

What can be ascertained from the information we have is that housing needs survey are proving to be effective in establishing genuine housing need, which in turn is being delivered through planning permissions granted, which are normally promoted by a Registered Social Landlord. The figures also demonstrate that there are 325 dwelling units that have been granted planning permission since 1998, which have not been developed. There may be a variety of reasons why some of these historical permissions have not been completed; planning permission having lapsed is one of them. Further assessment of the Housing Land Availability Surveys suggests that 220 applications remain extant in the period 2005 – 06.

Draft RSS sets out an indicative target for the LDNP of 117 per annum. If the Plan is adopted then in the future it will be easier to demonstrate the housing trajectory in relation to the 'Managed Requirement' Core Indicator 2av of the Annual Monitoring Report.

Illustrations, charts, etc:

	98-99	99-00	00-01	01-02	02-03	03-04	04-05	05-06	06-07	07-08	08-09	09-10	10-11	11-12	12-13	13-14	14-15	15-16
Permissions	218	231	194	152	195	108	200	123										
Past Completions <a href="#">[2ai]</a>	198	58	230	93	106	88	162											
Current Completions <a href="#">[2aii]</a>								161										
Housing Need Surveys							58	316	55									
Annual Requirement <a href="#">[2aiv]</a>										117	117	117	117	117	117	117	117	117

Notes:

**Permissions** – planning approvals since the start of the adopted Local Plan 1998

**Past Completions** – net additional dwellings since start of adopted Local Plan 1998

**Current Completions** – net additional dwellings for current year

**Annual Requirement** – annual net additional dwelling requirement as set out in draft North West Regional Spatial Strategy (2,100 total maximum housing provision 2003-2021)

**Housing Needs Surveys** – known identified need (see table below)

Review of saved policies/LDDs:

The saved policies in the Local Plan continue to provide the guidance necessary for our Development Control Officers to fulfil their day-to-day functions and so remain valid in the immediate term. The Settlement hierarchy identified in Policies H1, H2, H4 & H5 are still relevant as is Policy H3: Housing Exceptions on Important Open Spaces.

The Cumbria and Lake District Joint Structure Plan 2001 – 2016 was adopted in April 2006. The suite of housing policies, which it introduces, is designed to provide the strategic policy framework which directs future housing development in Cumbria and The Lake District National Park. As it stands it does not supersede all the housing policies in the Local Plan. The Issues and Options Report on our Core Strategy sets out a range of spatial development proposals which when developed to Preferred Options stage will inform the need to save or not save the existing Local Plan housing policies. Therefore at this stage in the process it is likely that we will save the relevant policies and review their status in the 2006-07 Annual Monitoring Report.

Future Actions/Comments:

We will continue to monitor housing completions through our annual Housing Land Availability Survey, and we will also continue to monitor housing permissions. The adoption of the Joint Structure Plan and the introduction of our Supplementary Planning Document will hopefully afford a more prudent approach to future housing development in the Lake District National Park which will eliminate the past discrepancies between demand housing and needs led housing. Future monitoring reports will hopefully start to demonstrate the relevance and effectiveness of our housing policies in delivering the appropriate type of housing on the ground. It will also show we are in conformity with national and regional guidance.

Local Indicator:

### Number of Housing Need Surveys 2004 - 2006

Parish	Date	Identified Need	Survey valid date
Ambleside	June 2006	38	2011
Askham & Helton	January 2006	17	2011
Borrowdale	December 2004	9	2009
Broughton West	August 2005	5	2010
Caldbeck	December 2004	19	2009
Coniston	March 2006	66	2011
Glenridding	September 2005	6	2010
Grasmere with Rydal	2006 - pending		
Haverthwaite	March 2005	13	2010
Hawkshead	August 2005	14	2010
Keswick	December 2005	169	2010
Staveley	August 2004	17	2009
Threlkeld	August 2005	9	2010
Torver	March 2006	7	2011
Underbarrow	July 2006	17	2011
Witherslack	July 2005	23	2010

**Notes:**

There are a number of larger settlements which remain to be surveyed. These are Windermere, Bowness & Troutbeck Bridge; Bootle; Braithwaite; Eskdale Green; Gosforth; Lindale; Pooley Bridge; Portinscale. Windermere, Bowness & Troutbeck Bridge are due to be surveyed in the immediate future, with the remainder likely to be surveyed during 2007.

**Analysis:**

The housing need surveys provides a figure which will encourage a period of focussed housing development, which is likely to extend over the next 5-7 years. Future surveys are likely to identify a similar need. The external demand will have to compete for a smaller number of properties available and this will continue to force up the price of available open market housing within the Lake District National Park. It is unlikely that wages will rise significantly to allow local people to compete for open market housing, and inflation rates will continue to rise putting additional pressure on cost of living expenses. Surveys will continue to provide the robust evidence to demonstrate need so that development opportunities within this spectacular landscape are justified and sustainable. They will work alongside other survey work such as Urban Potential Studies and Employment Land studies in order to ensure that land can be allocated for development which is both feasible and contributes towards maintaining and supporting our vibrant communities.

## 8.7 Previously Developed Land

<b>Type of Indicator: CORE No/Ref: 2b</b>	<b>Indicator: Percentage of new and converted dwellings on previously developed land.</b>
Other Indicator Refs:	Best Value Performance Indicator 106-Percentage of new homes built on previously developed land. Target
Data Source:	Housing Land Availability Survey
Spatial Scale Measured:	National Park Wide
Linkage with other strategy/plan:	The North West Plan draft Regional Spatial Strategy: Table 9.1 Adopted Cumbria and Lake District Joint Structure Plan 2001 – 2016: Policy H18
<b>Objective/Commentary:</b>	

Government guidance and policy seeks to maximise the re-use of previously-developed land and the conversion of non-residential buildings for housing, in order both to promote regeneration and minimise the amount of Greenfield land being taken for development. The national target is that by 2008, 60% of additional housing should be provided on previously developed land and through conversions of existing buildings. To achieve the national target further targets have been set from the regional to the district level to reflect the amount of previously developed land available for development in different areas. (see table below)

TARGETS – PREVIOUSLY-DEVELOPED LAND (For the period 2005-2006)	
National Target <sup>1</sup>	<b>60%</b> of additional housing should be provided on previously developed land and through conversions of existing buildings by 2008
Regional Target <sup>2</sup>	In Cumbria at least <b>50%</b> of new dwellings will be built on previously developed land.
Emerging Cumbria and Lake District Joint Structure Plan 2001-2016 Target <sup>3</sup>	At least <b>50%</b> of housing constructed in Cumbria should use previously developed land and buildings.
Local Plan Target	Adopted before target requirement
Best Value Performance Indicator 106 <sup>4</sup>	60% of new homes built on previously developed land

**Notes:**

<sup>1</sup> PPG3 – Housing: Paragraph 23

<sup>2</sup> RPG13: Policy UR4 - Setting Targets for the recycling of Land and Buildings

<sup>3</sup> CLDJSP: Policy H18

<sup>4</sup> BV106 – A best value authority must make arrangements to secure continuous improvements in the way in which its functions are exercised

**Indicator Measure**

Actual Target (if any):	2005-06 Target 50% & 60% respectively
Where Set:	RPG13 Policy UR4; Joint Structure Plan H18 & BVPI 106: % of new homes built on previously developed land
Actual Achieved Measure:	Gross figure 72%

**Analysis/Policy Assessment:**

Our performance in relation to recycling land and building targets during the period 2005 – 2006 has exceeded the targets set out in various guidance and policy. This is consistent with previous performance rates. However, we are aware that this trend is likely to decrease significantly because there is no longer a finite brownfield land resource suitable for redevelopment and what there has been is likely to have been used up in previous years. This situation is compromised by the Greenfield definition applied to buildings used for agriculture and forestry, which covers a significant amount of potential development opportunities within the Lake District National Park. Couple this with the need for exception sites and site allocation policies to deliver local needs housing, we are likely to see a significant reduction in the % figure previously achieved in relation to completions on previously developed land. This has been reflected in the BVPI target figures for 2006 – 2009 being reduced to 50%, a figure being suggested in the draft RSS for the North West.

Illustrations, charts, etc:

Year	New Build (net)				Conversions including subdivision (Net)		Total	Total	%
	Greenfield	PDL	Total	%PDL	Greenfield	PDL	PDL	All sites	PDL
2001-02	11	20	31	64.5%	10	52	72	93	77.4%
2002-03	22	25	47	53.2%	13	44	69	104	66.34%
2003-04	11	9	20	45%	9	58	67	87	77%
2004-05	18	40	58	68.9%	27	76	116	161	72%
2005-06	19	56	75	74.6%	28	57	113	160	70%

**Review of saved policies/LDDs:**  
Not applicable

**Future Actions/Comments:**  
Some development opportunities in the Lake District National Park involve buildings that have been used for agriculture and forestry and these are classified as Greenfield. Any changes to this classification is something that we will have to keep an eye on as it would have a bearing on our previously developed land target figures.  
The information established through our Urban Potential Studies will help to identify the availability of land which could accommodate new development. Couple this with the housing needs surveys, the Authority will be better placed in the future to make informed judgements as to the most appropriate locations for future development.  
The Authority will continue to closely monitor land supply for housing.

<b>Type of Indicator:</b> CORE No/Ref: 2c	<b>Indicator: Percentage of new dwellings completed at:</b> (i) less than 30 dwellings per hectare (ii) between 30 and 50 dwellings per hectare (iii) above 50 dwellings per hectare
<b>Data Source:</b>	Housing Land Availability Survey
<b>Spatial Scale Measured:</b>	National Park wide
<b>Linkage with other strategy/plan:</b>	Regional Spatial Strategy Planning Policy Statement 3: Housing
<b>Objective/Commentary:</b>	
New Government guidance in PPS3 promotes the efficient use of land as a key consideration in planning for housing. Local Planning Authorities are encouraged to set out a range of densities to reflect land availability, capacity of infrastructure, accessibility and area characteristics. In the absence of any locally set targets, 30 dwellings per hectare net should be used as a national indicative minimum, until local density policies are in place. We currently do not have a local density policy. The types of residential applications we receive are mainly small-scale development of 1-2 new dwellings with the occasional larger scale development in some of our larger settlements. The effective use of land is an issue within the Lake District National Park as there is not an infinite land resource available. Density will become more of an issue when we are allocating sites for housing through the Local Development Framework.	
<b>Indicator Measure</b>	
<b>Actual Target (if any):</b>	30 and 50 dwellings per hectare
<b>Where Set:</b>	PPG3
<b>Actual Achieved Measure:</b>	The table below sets out details of completions for the period 1 April 2005 to 31 March 2006
Illustrations, charts, etc	

		No. of Dwellings	Percentage
Density of New Dwellings	Less than 30 dwellings per hectare [2ci]	66	40.9%
	Between 30 and 50 dwellings per hectare [2cij]	29	18.01%
	Above 50 dwellings per hectare [2ciij]	66	40.9%
Housing Completions 2005-2006		161	
<b>Analysis/Policy Assessment:</b>			
<p>The above table relates to dwellings completed in the financial year 2005-06 and sets out the number of dwellings completed in developments at different density ranges. It applies to all schemes. The figures show that 40% of our completions were built at densities greater than 50 dwellings which is an effective use of land. A further 29 dwellings were built in schemes between 30 and 50 dwelling per hectare. 40% of new dwellings were built in schemes with a density lower than 30 dwellings per hectare. These completions account for over a third of the total. It is clear is that a planning policy is necessary if we are to make the most effective use of the land we have available for residential development. The Urban Potential Studies and housing needs surveys will continue to identify capacity and need, which in turn will inform both planning application decisions and our local density policy through the LDF process. Until then we will continue to use Government guidance and policy, and closely monitor housing land availability. It is likely that we would support a high density of housing per hectare above the 30 houses per hectare as an indicative minimum. This of course would be subject to extensive consultation.</p>			
<b>Review of saved policies/LDDs:</b>			
Not applicable			
<b>Future Actions/Comments:</b>			
<p>In light of the comments made in PPS3 regarding local density policies it will be important that we address this issue through the LDF as a general development control policy. This will also be informed by our urban potential studies which will define the character of a settlement and identify its development capability.</p>			

Type of Indicator: CORE No/Ref: 2d	Indicator: Affordable Housing Completions
Data Source:	LDNPA Housing Land Availability Survey
Spatial Scale Measured:	National Park wide
Linkage with other strategy/plan:	<p>Cumbria Housing Strategy 2006/2011  Housing Strategy Statistical Appendix  Cumbria and Lake District Joint Structure Plan Policies ST12, H20, H21 and H22  Lake District Management Plan Policies SC1, SC2, SC3, SC5, SC8 and SC9  The Cumbria Strategic Partnership and Local Strategic Partnership community strategies, including action plans  Local Area Agreements  <i>The North West Plan</i> Draft RSS 2006 Policy L5</p>
<b>Objective/Commentary:</b>	

Ensuring a supply of affordable housing is a key challenge to secure sustainable communities.

PPG3 requires local authorities to include a policy seeking affordable housing in suitable housing developments where an up-to-date housing needs survey demonstrates that there is a lack of affordable housing to meet local needs.

PPS3 addresses affordable housing in rural communities. It requires local planning authorities to adopt a positive and pro-active approach which is informed by evidence, with clear targets for the delivery of rural affordable housing.

Policy H20 of the Joint Structure Plan seeks to ensure any new housing in the Lake District National Park meets local housing needs. This means that no new housing will be provided to meet any demand for second homes, holiday homes, commuter homes or retirement homes. It removes any notion of meeting demand from our housing policies and replaces it with a notion of meeting housing need.

The issue of definitions in relation to affordable and local needs housing was one area that was specifically considered at the Examination in Public of the Structure Plan in September 2004. We use the term 'housing needs of the locality', rather than just 'affordable needs' in recognition that low, average, and even middle-income earners, are having difficulties accessing housing to rent or buy in the National Park. Each of these groups needs to be helped in different ways if we are to ensure our communities are genuinely sustainable.

We consider that to be in housing need, a household must be:

- a) Inadequately housed AND
- b) Unable to afford to rent and/or buy on the open market AND
- c) Have a need to live in the locality

This definition is included and explained in more detail in the adopted Supplementary Planning Document on Demonstrating Housing Need. A model Section 106 Agreement has also been created to complement the suite of housing policies to ensure that new housing development is implemented in accordance with the policy intentions.

Indicator Measure	
Actual Target (if any):	No targets set
Where Set:	
Actual Achieved Measure:	
Analysis/Policy Assessment:	

The Joint Structure Plan was adopted in April 2006 and the policies are now being implemented. Several housing needs surveys have been carried out and the evidence of need established. A small number of planning applications have been submitted to meet this need. Several community housing groups and Housing Associations are in regular contact with the Authority to identify appropriate sites for residential development. Of the 123 applications approved during the period 2005-06 62 dwellings will be provided through a Registered Social Landlord and 4 through local occupancy clauses by a private developer. This means that just over 50% of this year's approvals were approved to meet the identified need, a statistic that will continue to rise over the next few years. (See table below) However, there will still remain occasions in the short-term where extant permissions will be completed which are not subject to the current more stringent planning policy and subsequent Section 106 Agreement. This has resulted in a delay in the effective monitoring of our current housing policies.

A regular house price survey based on the property pages in local newspapers informs us of the current situation regarding affordability and availability. A real affordability issue is evident for a significant part of the National Park; a fact, which was reinforced by the Cumbria Economic Bulletin, published in September 2006. It is a particular problem for rural wards in South Lakeland and significant part of Eden, which are District areas covered by the Lake District National Park.

The Supplementary Planning Document on Demonstrating Housing Need was adopted in June 2006. Couple this with Policy H20 from the Joint Structure Plan in 2006-07 we will be better placed to monitor the effectiveness of our housing policies as the creation of new dwelling units will have to be supported by evidence through a housing need survey which by definition is designed to provide housing for those who are unable to access suitable housing without financial assistance.

**Illustrations, charts, etc**

Permissions granted approval 2005-06		
Number	Type	Running Total
62	Local occupancy through RSLs	62
15	Replacement dwellings	77
12	Reserved matters applications	89
15	Private sector dwellings	104
4	Agricultural workers/Forestry dwellings	108
3	Amended schemes	111
6	Other (Tied/ancillaryuse)	117
4	Local occupancy through a private developer	121
1	Existing Use – Permitted development	122
1	CLEUD	123

**Review of saved policies/LDDs:**

The Cumbria and Lake District Joint Structure Plan 2001 – 2016 was adopted in April 2006. The suite of housing policies, which it introduces, is designed to provide the strategic policy framework which directs future housing development in Cumbria and The Lake District National Park. As it stands it does not supersede all the housing policies in the Local Plan. The Issues and Options Report on our Core Strategy sets out a range of spatial development proposals which when developed to Preferred Options stage will inform the need to save or not save the existing Local Plan housing policies. Therefore at this stage in the process it is likely that we will save the relevant policies and review their status in the 2006-07 Annual Monitoring Report.

**Future Actions/Comments:**

We will continue to closely monitoring our housing policies through the annual Housing Land Availability survey. This will provide us with the evidence to inform the effectiveness of our housing policies and assess whether the intentions of the policy to provide affordable housing is in fact allowing housing to be delivered on the ground. We will continue to work with the District Housing Officers and Housing Associations to ensure that affordable housing in rural areas contributes to the creation and maintenance of sustainable rural communities in line with government guidance and policy. The draft RSS is currently going through its Examination in Public and the decisions of the Panel may have a bearing on future housing policy within the Lake District National Park.

## 8.8 Business Development

**Business Development,** The aim of current Local Plan policy is to enable economically viable and socially balanced communities in the National Park. This can be assisted by encouraging a wider range of local employment opportunities for local people, not least school leavers, through the diversification of the economic base and, in addition, supporting the needs of existing businesses. Currently the economic base is rather narrowly drawn from agriculture and tourism and is vulnerable to changes in these market sectors. A wider base will assist in stabilising full-time paid employment and help to secure jobs with higher GVA ratings for the resident community.

### Contextual

#### Economically active people in employment categories

Unemployment in the National Park is noticeably lower than in the rest of Cumbria. Self employment is considerably higher, particularly in the countryside (which ties in with a high incidence of homeworking). In consequence the proportion of full and part-time employees is reduced.

Total no.	Employees part time	Employees full time	Self employed	Unemployed	Full time student
31286	3668	10075	6132	619	807
Percentage	11.72	32.20	19.60	1.98	2.58

Source: Census 2001

#### Industry of Employment – Resident employment

Agriculture, hunting and forestry have relatively high levels of representation in resident employment in the National Park compared with elsewhere. Other important features are the strength of employment in hotels and restaurants in the National Park.

Employment Type	Number	%
<b>Total</b>	<b>20592</b>	<b>20592</b>
Agriculture, Hunting & Forestry	1566	7.60
Fishing	15	0.07
Mining & Quarrying	102	0.50
Manufacturing	1916	9.30
Electricity, Gas & Water Supply	110	0.53
Construction	1319	6.41
Wholesale/Retail Trade, Repair, etc	3203	15.55
Hotels & Restaurants	4336	21.06
Transport, Storage & Communications	783	3.80
Financial Intermediation	302	1.47
Real Estate, Renting & Business Activities	1731	8.41
Public Admin/Defence/Social Security	644	3.13
Education	1666	8.09
Health and Social Work	1586	7.70
Other	1313	6.38
<i>Source: Census 2001</i>		

## Travel to work

The Census includes data for travel to work and homeworking. In the National Park homeworking is a strong economic characteristic. The rate of homeworking is particularly high at over 22%, increasing to 25% in the rural parts of the National Park. This is double the rate of homeworking in the rest of Cumbria.

The Report by Land Use Consultants shows that the dominant mode of travel to work is by car. Bus travel is particularly weak and it is noticeable that car sharing is low. In the towns the proportion of people walking to work is nearly three times greater than in the rest of the national Park, and double the rate for the rest of Cumbria. Overall, homeworking and walking to work account for over 40% of employees in the National Park.

Total	Work mainly from home	Underground Metro Light Train Tram	Train	Bus Minibus Coach	Motor - Cycle Scooter Moped	Driving car Van	Passenger in car/van	Taxi Minicab	Bicycle	On foot	Other
20564	4610	24	120	276	128	9934	959	73	428	3739	227
Percentage	22.42	0.12	0.58	1.34	0.62	48.31	4.66	0.35	2.08	18.43	1.1

Type of Indicator: Core No/Ref: 1a	Indicator: Amount of floorspace developed for employment by type
Other Indicator Refs:	RSS1a, Local
Data Source:	LDNPA Employment Land Availability Records
Spatial Scale Measured:	National Park wide
Linkage with other strategy/plan:	
Objective/Commentary:	
Indicator will enable monitoring of actual developments completed to determine the range of business and employment opportunities being secured.	
Indicator Measure	
Actual Target (if any):	None
Where Set:	
Actual Achieved Measure:	971m2
Analysis/Policy Assessment:	
Between 1 April 2005 and 31 March 2006 4 developments have been recorded as being completed.	
Review of saved policies/LDDs:	

<p>The saved policies in the Local Plan continue to provide the guidance necessary for our Development Control Officers to fulfil their day-to-day functions and so remain valid in the immediate term.</p> <p>The Cumbria and Lake District Joint Structure Plan 2001 – 2016 was adopted in April 2006. The suite of policies which it introduces, is designed to provide the strategic policy framework which directs future economic development in Cumbria and the Lake District National Park. As it stands it does not supersede all the economic policies in the Local Plan.</p> <p>The Issues and Options Report on our Core Strategy sets out a range of proposals which when developed to Preferred Options stage will inform the need to save or not save the existing Structure and Local Plan policies. Therefore at this stage in the process we will save the relevant policies and review their status in the 2006-07 Annual Monitoring Report.</p>
<b>Future Actions/Comments:</b>
<p>Unfortunately staff changes have meant that priority was not given to maintaining the employment land data this year and plans to develop a new database which could provide the required data have not progressed as far as originally planned. The data for this year's Annual Monitoring Report is therefore incomplete. It is not possible to break down the data into individual use classes or provide an in depth analysis this year.</p> <p>It is necessary to carry out a complete overhaul of the Employment Land Availability Monitoring System to enable the required data to be collected, collated and classified accordingly. To do this, resources will need to be put in place to ensure that this system is properly maintained. This is therefore dependent on the priority given to this area of work.</p>

<b>Type of Indicator: Core No/Ref: 1b</b>	<b>Indicator: Amount of floorspace developed for employment by type, in employment or regeneration areas.</b>
Other Indicator Refs:	RSS1b
Data Source:	LDNPA Employment Land Availability Records
<b>Objective/Commentary:</b>	
The Lake District National Park does not have any employment or regeneration areas identified in either the Local Plan or the Local Development Framework.	
<b>Indicator Measure</b>	
Actual Target (if any):	None

<b>Type of Indicator: Core No/Ref: 1c</b>	<b>Indicator: Amount of completed floorspace by employment type, which is on previously developed land</b>
Other Indicator Refs:	RSS1c
Data Source:	LDNPA Employment Land Availability Records
Spatial Scale Measured:	National Park wide
Linkage with other strategy/plan:	
<b>Objective/Commentary:</b>	
In seeking a more sustainable pattern of development, development plan policies try to minimise the use of resources by making more efficient use or re-use of existing resources, encouraging the use of previously developed land.	
<b>Indicator Measure</b>	
Actual Target (if any):	None
Where Set:	
Actual Achieved Measure:	446m2      46%
<b>Analysis/Policy Assessment:</b>	

Two developments have been completed on previously used land this year. One development provided 256m2 of craft workshop space B2/B8 uses and the other provided live/work units of 190m2 (B1 use?)
<b>Review of saved policies/LDDs:</b>
The saved policies in the Local Plan continue to provide the guidance necessary for our Development Control Officers to fulfil their day-to-day functions and so remain valid in the immediate term.
The Cumbria and Lake District Joint Structure Plan 2001 – 2016 was adopted in April 2006. The suite of policies which it introduces, is designed to provide the strategic policy framework which directs future economic development in Cumbria and the Lake District National Park. As it stands it does not supersede all the economic policies in the Local Plan.
The Issues and Options Report on our Core Strategy sets out a range of proposals which when developed to Preferred Options stage will inform the need to save or not save the existing Structure and Local Plan policies. Therefore at this stage in the process we will save the relevant policies and review their status in the 2006-07 Annual Monitoring Report.
<b>Future Actions/Comments:</b>
Unfortunately staff changes have meant that priority was not given to maintaining the employment land data this year and plans to develop a new database which could provide the required data have not progressed as far as originally planned. The data for this year's Annual Monitoring Report is therefore incomplete. It is not possible to break down the data into individual use classes or provide an in depth analysis this year.
It is necessary to carry out a complete overhaul of the Employment Land Availability Monitoring System to enable the required data to be collected, collated and classified accordingly. To do this, resources will need to be put in place to ensure that this system is properly maintained. This is therefore dependent on the priority given to this area of work.

<b>Type of Indicator: Core No/Ref: 1d</b>	<b>Indicator: Employment Land Available by Type</b>
Other Indicator Refs:	RSS1d
Data Source:	Employment Land Availability Records
Spatial Scale Measured:	National park wide
Linkage with other strategy/plan:	
<b>Objective/Commentary:</b>	
Structure Plan policies EM13 and EM15 and Local Plan policies E1 to E6 seek to encourage economic activities to improve economic performance, promote opportunities for diversifying the economy and providing a wider choice of employment opportunities. Emphasis is placed on developing higher value added business activities. Structure Plan policy EM13 requires 3ha of employment land to be provided through Local Plan allocations for the period 2001 to 2016.	
Policies seek to ensure that an adequate supply of land for a variety of business uses, in a variety of locations, comes forward through the Local Plan allocations.	
This indicator seeks to quantify the amount of employment land available on sites with planning permission or that are allocated in the Local Plan.	
<b>Indicator Measure</b>	
Actual Target (if any):	3Ha
Where Set:	Structure Plan policy EM13
Actual Achieved Measure:	7.8579Ha
<b>Analysis/Policy Assessment:</b>	

Records currently show that there are 35 sites with land available for development. This excludes sites where development is already under construction.

6 sites were allocated in the Lake District National Park Local Plan for B1/B2 uses and these are still currently available. Another site was identified as providing the opportunity for business development at the Former Backbarrow Ironworks. This site now has planning permission and redevelopment has begun. There is now 2.68Ha of land remaining as allocated which falls slightly short of the Structure Plan requirement. However there is a further 4.3779Ha of land available which has planning permission for employment development. Land is available in numerous settlements throughout the National Park and shows that policy is achieving its aim of meeting the local need for employment land.

84% of the sites available are utilising previously developed land, equating to 12 individual sites totalling 6.6Ha.

#### Review of saved policies/LDDs:

The saved policies in the Local Plan continue to provide the guidance necessary for our Development Control Officers to fulfil their day-to-day functions and so remain valid in the immediate term.

The Cumbria and Lake District Joint Structure Plan 2001 – 2016 was adopted in April 2006. The suite of policies which it introduces, is designed to provide the strategic policy framework which directs future economic development in Cumbria and the Lake District National Park. As it stands it does not supersede all the economic policies in the Local Plan.

The Issues and Options Report on our Core Strategy sets out a range of proposals which when developed to Preferred Options stage will inform the need to save or not save the existing Structure and Local Plan policies. Therefore at this stage in the process we will save the relevant policies and review their status in the 2006-07 Annual Monitoring Report.

#### Future Actions/Comments:

Unfortunately staff changes have meant that priority was not given to maintaining the employment land data this year and plans to develop a new database which could provide the required data have not progressed as far as originally planned. The data for this year's Annual Monitoring Report is therefore incomplete. It is not possible to break down the data into individual use classes or provide an in depth analysis this year.

It is necessary to carry out a complete overhaul of the Employment Land Availability Monitoring System to enable the required data to be collected, collated and classified accordingly. To do this, resources will need to be put in place to ensure that this system is properly maintained. This is therefore dependent on the priority given to this area of work.

Early in 2007 work is being commissioned jointly with the North West Regional Development Agency to assess the demand and future supply of employment land and premises within the National Park, which also takes forward relevant recommendations from the Lake District Economic Futures Study. This will inform the preparation of Preferred Options for the Core Strategy of the LDF.

Type of Indicator: Core No/Ref: 1e	Indicator: Losses of employment land in (i) employment/regeneration areas and (ii) local authority area
Other Indicator Refs:	
Data Source:	LDNPA Employment Land Availability Records
Spatial Scale Measured:	National Park wide
Linkage with other strategy/plan:	
Objective/Commentary:	
<p>In the National Park land, is scarce for development purposes and there are competing demands from users who can command much higher land values. The policy approach in both the Structure and Local Plan therefore seeks to protect employment sites and premises from alternative uses.</p> <p>Local Plan policy E2 and Structure Plan policy EM14 seek to protect employment sites and premises in the National park from being used for other purposes unless unsuitable or unviable for business use. Where other viable alternatives are available in the locality, use for other purposes can be considered.</p> <p>The Lake District National Park has no employment or regeneration areas identified.</p>	
Indicator Measure	
Actual Target (if any):	No loss
Where Set:	LP Policy E2 and SP Policy EM14
Actual Achieved Measure:	One lost site (0.30ha)
Analysis/Policy Assessment:	
<p>There has only been one loss of an employment site in the last year. This particular premises had been used as a restaurant but had been granted planning permission for change of use to offices/showroom. However, subsequent to this approval the premises are now used as an Indian Restaurant.</p>	
Review of saved policies/LDDs:	
<p>The saved policies in the Local Plan continue to provide the guidance necessary for our Development Control Officers to fulfil their day-to-day functions and so remain valid in the immediate term.</p> <p>The Cumbria and Lake District Joint Structure Plan 2001 – 2016 was adopted in April 2006. The suite of policies which it introduces, is designed to provide the strategic policy framework which directs future economic development in Cumbria and the Lake District National Park. As it stands it does not supersede all the economic policies in the Local Plan.</p> <p>The Issues and Options Report on our Core Strategy sets out a range of proposals which when developed to Preferred Options stage will inform the need to save or not save the existing Structure and Local Plan policies. Therefore at this stage in the process we will save the relevant policies and review their status in the 2006-07 Annual Monitoring Report.</p>	
Future Actions/Comments:	
<p>Unfortunately staff changes have meant that priority was not given to maintaining the employment land data this year and plans to develop a new database which could provide the required data have not progressed as far as originally planned. The data for this year's Annual Monitoring Report is therefore incomplete. It is not possible to break down the data into individual use classes or provide an in depth analysis this year.</p> <p>It is necessary to carry out a complete overhaul of the Employment Land Availability Monitoring System to enable the required data to be collected, collated and classified accordingly. To do this, resources will need to be put in place to ensure that this system is properly maintained. This is therefore dependent on the priority given to this area of work.</p>	

Type of Indicator: Core No/Ref: 1f	Indicator: Amount of employment land lost to residential development
Other Indicator Refs:	
Data Source:	LDNPA Employment Land Availability records
Spatial Scale Measured:	National Park wide
Linkage with other strategy/plan:	
Analysis/Policy Assessment:	
There have been no losses of employment land to residential development.	
Review of saved policies/LDDs:	
<p>The saved policies in the Local Plan continue to provide the guidance necessary for our Development Control Officers to fulfil their day-to-day functions and so remain valid in the immediate term.</p> <p>The Cumbria and Lake District Joint Structure Plan 2001 – 2016 was adopted in April 2006. The suite of policies which it introduces, is designed to provide the strategic policy framework which directs future economic development in Cumbria and the Lake District National Park. As it stands it does not supersede all the economic policies in the Local Plan.</p> <p>The Issues and Options Report on our Core Strategy sets out a range of proposals which when developed to Preferred Options stage will inform the need to save or not save the existing Structure and Local Plan policies. Therefore at this stage in the process we will save the relevant policies and review their status in the 2006-07 Annual Monitoring Report.</p>	
Future Actions/Comments:	
<p>Unfortunately staff changes have meant that priority was not given to maintaining the employment land data this year and plans to develop a new database which could provide the required data have not progressed as far as originally planned. The data for this year's Annual Monitoring Report is therefore incomplete. It is not possible to break down the data into individual use classes or provide an in depth analysis this year.</p> <p>It is necessary to carry out a complete overhaul of the Employment Land Availability Monitoring System to enable the required data to be collected, collated and classified accordingly. To do this, resources will need to be put in place to ensure that this system is properly maintained. This is therefore dependent on the priority given to this area of work.</p>	

## 8.9 Local Services

**Local Services, current policy context** The Joint Structure Plan seeks to ensure that services and facilities are available in towns and villages. The Local Development Framework will need to establish the importance of local centres and facilities and identify measures which will help to sustain them. We will need to carry out surveys of the existing and future needs of communities for open space, sport and recreational and cultural activities and carry out audits of existing facilities. Where appropriate, local standards should be set out in the LDF to identify specific needs and areas of shortfall.

Type of Indicator: Core No/Ref:4a	Indicator: Amount of completed retail, office and leisure development
No/Ref: 4b	Indicator: Amount of completed retail, office and leisure development in town centres
Other Indicator Refs:	RSS4a and RSS4b
Data Source:	L:DNPA Planning Applications Database and monitoring
Spatial Scale Measured:	National Park wide
Linkage with other strategy/plan:	
Objective/Commentary:	
<p>National policy promotes sustainable development And aims to focus new development for retail, office and leisure uses in existing town centres. Growth and investment should therefore seek to promote vital and viable town centres. In the National Park settlements are generally small and scattered and it is important that local services are supported and retained to enable sustainable communities to thrive.</p> <p>A suite of policies has been developed in the Joint Structure Plan (L52 to L57) to enable the provision of local services and facilities to meet the needs of communities.</p> <p>Local Plan policy seeks to sustain rural community life within the National Park by ensuring that new development meets social and economic needs and that existing facilities are retained. Local shops and services are important facilities in this context. The following objectives underpin the retail policies (R1 to R7) of the Local Plan: To foster the vitality and viability of the shopping centres of Ambleside, Bowness, Windermere and Keswick in a manner which does not conflict with the need to preserve and enhance the character and appearance of the built environment. To ensure the number, location, extent and form of additional retail development outside these commercial centres helps to meet the needs of local communities and protects and enhances the character and appearance of the National Park.</p> <p>One objective of the Local Plan is to protect existing sport and recreation facilities from development (Policy S1) and to allow for the improvement and alteration of those facilities where they do not compromise the landscape and to give favourable consideration to the provision of new facilities to meet the needs of local communities (Policy S2). The Plan aims to encourage the provision of children's play facilities in areas of new development (Policy S3) and to protect existing public rights of way (Policy S5).</p>	
Indicator Measure	
Actual Target (if any):	None
Where Set:	
Actual Achieved Measure:	

<b>Analysis/Policy Assessment:</b>
<p>Category B1a is currently captured via the business Development indicators.</p> <p>It has not been possible to put systems in place to monitor retail, office and leisure developments for the 2006 AMR.</p>
<b>Review of saved policies/LDDs:</b>
<p>The saved policies in the Local Plan continue to provide the guidance necessary for our Development Control Officers to fulfil their day-to-day functions and so remain valid in the immediate term.</p> <p>The Cumbria and Lake District Joint Structure Plan 2001 – 2016 was adopted in April 2006. The suite of policies which it introduces, is designed to provide the strategic policy framework which directs future development in Cumbria and the Lake District National Park. As it stands it does not supersede policies in the Local Plan.</p> <p>The Issues and Options Report on our Core Strategy sets out a range of proposals which when developed to Preferred Options stage will inform the need to save or not save the existing Structure and Local Plan policies. Therefore at this stage in the process we will save the relevant policies and review their status in the 2006-07 Annual Monitoring Report.</p>
<b>Future Actions/Comments:</b>
<p>Unfortunately the post dealing with many of our monitoring requirements has been vacant for most of this year so resources have not been available and priority has not been given to developing this area of work, that said, some progress has been made. Surveys of all the larger settlements are being undertaken on a rolling programme to provide baseline data for these settlements (20 in all). There remain around 6 to 8 settlements still to survey. The intention was to try and set up a combined database for monitoring Business Uses and for A1, A2 and D2 uses but this has not progressed as far as originally planned. The data for this year's Annual Monitoring Report is therefore not yet available.</p> <p>Work has begun on identifying the relevant planning applications to monitor for these two indicators. 5000 planning applications have been identified which must be checked to ensure that the relevant developments are included for monitoring. Resources will need to be found to undertake this area of monitoring and priority given to this next year if the required data is to be collected, collated, and classified. The extent of work required means that it is unlikely that all the data will be available for the 2007 AMR.</p>

<b>Type of Indicator: Core No/Ref: 4c</b>	<b>Indicator: Amount of open spaces managed to Green Flag Award standard.</b>
<b>Spatial Scale Measured:</b>	Authority wide
<b>Linkage with other strategy/plan:</b>	Draft Rights of Way Improvement Plan 2006 Cumbria County Council, Lake District National Park Authority
<b>Objective/Commentary:</b>	
<p>To achieve Green Flag Award standards for publicly accessible open space.</p> <p>The Office of the Deputy Prime Minister's Public Service Agreement target 8 sets national policy for green spaces and open spaces. The Agreement states that local authorities are to lead the delivery of cleaner, safer, and greener public spaces. They should also lead on improving the quality of the built environment in deprived areas and across the country, with measurable improvements by 2008.</p>	

The Green Flag Award is the national standard for parks and green spaces in England and Wales. The Civic Trust manages the award, on behalf of the ODPM and the Green Flag Advisory Board. Awards are given annually, and those that are successful must apply each year to renew their status. The Core Output Indicator does not require that sites should have been awarded Green Flag status, but measures the percentage of publicly accessible open space that is managed to "Green Flag Award standard".

Areas of open space of particular importance have been identified within the larger settlements of the National Park in the Local Plan and are shown on the Proposals Maps. Policies deal with the protection and designation of areas of public and private open space with Policy BE18 affording particularly strong protection to areas of important open space.

#### Analysis/Policy Assessment:

Data is not currently available for this indicator.

In partnership with Cumbria County Council, we appointed consultants to undertake some research to assess needs and preferences of key audiences for countryside access and recreation in Cumbria. This was done by:  
Identifying the key audiences for the Cumbria Rights of Way Improvement Plan (CROWIP);  
Collecting and setting out missing information from those audiences to identify their needs and preferences for countryside access and recreation in Cumbria; and  
Showing how the strategy and practical outcomes of the CROWIP can both help to meet these needs and preferences and deliver the aims of the Cumbria Countryside Access Strategy (CCAS). The research identified the key needs and preferences and recommended actions to address needs and preferences, and to erode barriers to wider participation. The majority of identified needs and preferences meet the key aims identified in the CCAS.

In 2006 we began an assessment of open spaces and recreational facilities throughout the National Park. The assessment is an audit of sports facilities and children's play areas, and of other open spaces such as parks and amenity sites. We have identified existing sites in the National Park, and have visited those sites to record qualitative information about them. We have not yet completed the data entry stage of the project. It is envisaged that this will be completed in 2007. The database will then provide the information that we need to enable an assessment of the amount of open space areas managed to Green Flag Award standard for the 2007 Report.

#### Review of saved policies/LDDs:

Policies S1, S2, S3, S4, S5, S6, S7, S8, and S9 to be saved and to be retained pending future development of LDD.

#### Future Actions/Comments:

Completion of Open Spaces Audit and Assessment so that we can assess the number of open spaces that are managed to Green Flag Award standard.

## 8.10 Minerals and Waste

**Minerals:** Work on our Core Policies including Minerals and Waste begins in early 2006. This work will include liasing with Cumbria County Council as the Planning Authority for Cumbria outside the Lake District National Park. Discussions on how best we can provide information on the core indicators, and develop local indicators will be a key part of these discussions.

Type of Indicator: CORE No/Ref: 5a	Indicator: The production of primary land won aggregates (tonnes)
Other Indicator Refs:	
Data Source:	Cumbria County Council Minerals and Waste Team. The latest figures are set out in the North West Regional Aggregates Working Party Annual Report 2005. These are up to the calendar year 2004 and include quarries that are within the Lake District National Park.
Spatial Scale Measured:	County-wide (cannot be broken down to LDNPA level, for reasons of commercial confidentiality)
Linkage with other strategy/plan	<i>Planning Cumbria</i> , Cumbria and Lake District Joint Structure Plan 2001-2016 <i>The North West Plan</i> , Regional Spatial Strategy LDNP Local Plan Policies M1 and M2
<b>Objective/Commentary:</b>	
Policies ER9 and ER10 of the Regional Spatial Strategy seek to ensure that an adequate supply of minerals is maintained. Except for dimension or building stone and slate, it is considered that this will be achievable without the need to make further provision within the National Park. (Policy R48 Joint Structure Plan) Mineral production within the National Park is limited primarily to slate, stone and aggregates. Because of the sensitive nature of mineral extraction, permissions are assessed against policies which are designed to balance the significant environment effects against the demonstrated need for mineral extraction. There are three large scale slate quarries currently operating, with other smaller sites operating intermittently when the demand for their particular slate arises. There are also granite and limestone quarries.	
<b>Indicator Measure:</b>	
Actual Target (if any):	Aggregate guidelines' sub-regional apportionment figures of 4.1 million tonnes for crushed rock and 700,000 tonnes of sand and gravel.
Where set:	ER9 and ER10 of RPG
Actual Achieved Measure:	The three-year average annual sales 2001 and 2004 for Cumbria were 3.9 million tonnes/year and 900,000 tonnes/year of sand and gravel.
<b>Analysis/Policy Assessment:</b>	
<p>The annual sales of crushed rock for Cumbria have been marginally lower than the apportionment (by 200,000 tonnes/year or 5%) and those for sand and gravel have been significantly higher than the apportionment (by 200,000 tonnes/year or 29%). We have not received any planning applications for new proposals minerals extractions or extensions to during April 2005 and March 2006.</p> <p>The table in the Joint Structure Plan showing aggregate landbank includes permitted reserves in the Lake District National Park. It may be necessary to release further reserves of general crushed rock to maintain the landbank, and this will be addressed through detailed policies set out in the Local Development Framework and working closely with the County Mineral and Waste Team.</p> <p>This is a difficult indicator for us to report on because the information is not disaggregated to reflect the mineral workings within the National Park because of reasons of commercial confidentiality. However, it is still necessary that we monitor mineral workings because of its importance as a viable industry and also because of the potential conflicts with the areas natural beauty.</p>	
<b>Review of saved policies/LDDs:</b>	
The Cumbria and Lake District Joint Structure Plan was adopted in April 2006 which introduced Policy R48: Mineral extraction in the Lake District National Park and AONBs. This	

sets out the circumstances in which mineral extraction will be permitted in these areas and supersedes the Mineral Policies in the Local Plan. In addition to this, the Issues and Options Report addressed Minerals as part of the Core Strategy consultation, and this may lead to an alternative approach to be taken through the Preferred options stage. This will be reported on further in next years Annual Monitoring Report.

**Future Actions/Comments:**

We will continue to work closely with Cumbria County Council Minerals and Waste Team to promote joint working. We will also continue to monitor our planning permissions to remain informed of actual mineral workings on the ground. It is important to acknowledge the importance of the national and regional agenda in relation to climate change as this might have a bearing on future extractions particularly slate and building stone. We will also have to have regard for the ecological limits of some of our existing sites. It could be beneficial to both development control and mining operators if an assessment was conducted to assess development capacity of our existing and old sites to provide some certainty of the likelihood of future permissions should the need arise.

<b>Type of Indicator: CORE No/Ref: 5b</b>	<b>Indicator: The production of secondary/recycled aggregates (tonnes)</b>
Other Indicator Refs:	
Data Source:	Cumbria County Council Minerals and Waste Team.
Spatial Scale Measured:	Currently only figures for the North West region can be provided
Linkage with other strategy/plan	<i>Planning Cumbria</i> , Cumbria and Lake District Joint Structure Plan 2001-2016 <i>The North West Plan</i> Regional Spatial Strategy LDNP Local Plan Policies M1 and M2
<b>Objective/Commentary:</b>	
Secondary aggregates are those produced from minerals wastes and recycled aggregates are those produced from previously used materials e.g. construction and demolition wastes. Government guidance and the focus on sustainable development provide for an increasing proportion of aggregate supplies to be met from these "alternative" materials. The aim is for them to provide approximately 25% of aggregates supplies. The Regional Aggregate Working Party Report 2005 only includes figures for the region as a whole.	
<b>Indicator Measure:</b>	
Actual Target (if any):	
Where set:	
Actual Achieved Measure:	
<b>Analysis/Policy Assessment:</b>	
The most recent information from the Environment Agency's Waste Returns show that in 2004/05 337,447 tonnes of inert, construction and demolition wastes were managed within Cumbria and that 220,897 tonnes of these were landfilled. This suggests that 35% were re-used or re-cycled, well in excess of the 25% target figure. There are perceived deficiencies in the information about commercial/industrial and construction/demolition wastes. Surveys of how these are managed have been commissioned by the North West Region's waste planning authorities and are currently taking place.	
<b>Review of saved policies/LDDs:</b>	
The Cumbria and Lake District Joint Structure Plan was adopted in April 2006 which introduced Policy R48: Mineral extraction in the Lake District National Park and AONBs. This sets out the circumstances in which mineral extraction will be permitted in these areas and supersedes the Mineral Policies in the Local Plan. In addition to this, the Issues and Options Report addressed Minerals as part of the Core Strategy consultation, and this may lead to an alternative approach to be taken through the Preferred options stage. This will be reported on further in next years Annual Monitoring Report.	
<b>Future Actions/Comments:</b>	
We will continue to work closely with Cumbria County Council Minerals and Waste Team to promote joint working. We will also continue to monitor our planning permissions to remain informed of actual mineral workings on the ground. It may also be worthwhile investigating the merits of developing a better relationship with Building Control to help monitor the recycling of construction and demolition wastes. This will be explored during the year.	

**Waste Development** Work on our Core Policies including Minerals and Waste begins in early 2006. This work will include liasing with Cumbria County Council as the Planning Authority for Cumbria outside the Lake District National Park. Discussions on how best we can provide information on the core indicators, and develop local indicators will be a key part of these discussions.

Type of Indicator: CORE No/Ref: 6a	Indicator: Capacity of New Waste Management facilities by type
Other Indicator Refs:	
Data Source:	Cumbria County Council Minerals and Waste Team
Spatial Scale Measured:	National Park wide
Linkage with other strategy/plan	<i>The North West Plan</i> Regional Spatial Strategy EM12 & EM13 <i>Planning Cumbria</i> , Cumbria and Lake District Joint Structure Plan 2001-2016 Policy R49 LDNP Local Plan Policies W3 and W4
<b>Objective/Commentary:</b>	
The Joint Structure Plan acknowledges that new waste recovery facilities will be needed in order to limit the need to landfill. Both European and national guidance requires a fundamental change in the way waste is managed and has introduced a number of staged targets, which will be reported in Core Indicator 6b. Policy R49 indicates that large scale recovery sites should be located in the vicinity of the larger centres of Carlisle, Penrith, Workington, Whitehaven, Kendal and Barrow. The policy also promotes the creation of small scale recovery facilities designed to handle a range of waste arisings locally. In recognition of our responsibility in contributing to meeting national targets, we are working with the County Council Minerals and Waste Team to assess the feasibility of developing Kendal Fell Quarry as a Green Recovery site.	
<b>Indicator Measure:</b>	
Actual Target (if any):	Non set
Where set:	
Actual Achieved Measure:	
<b>Analysis/Policy Assessment:</b>	
We have not received any applications for planning permission for waste management development during 2005-06. The Cumbria County Council Issues and Options paper identified a shortfall in facilities within the Lake District National Park, and factor which was reiterated within our own Issues and Options Report. Policy EM12 of the RSS encourages waste planning authorities to work towards regional and sub regional self-sufficiency. In order to achieve this, facilities for the treatment and disposal of municipal commercial waste and industrial waste should be sited as close to the source of the waste as possible in order to satisfy the proximity principle. Without receiving any relevant applications this year it is difficult to assess the effectiveness of our policies. However, the current policy framework allows for the provision of civic amenity sites and recycling facilities within or adjacent to larger settlements and villages. It does not allow for landfill within the Lake District National Park.	
<b>Review of saved policies/LDDs:</b>	
With the exception of Policies W1 and W2 (landfill policies) our Local Plan policies will continue to run in tandem with the Joint Structure Plan policies to provide the local context not addressed through the strategic policy framework offered by the RSS. The Issues and Options Report on our Core Strategy sets out a range of spatial development proposals which when developed to Preferred Options stage will inform the need to save or not save the existing Local Plan waste policies. Therefore at this stage in the process it is likely that we will save the relevant policies and review their status in the 2006-07 Annual Monitoring Report.	
<b>Future Actions/Comments:</b>	
We will continue to work with the County Council and District collection and disposal teams to assess the need for identifying new sites for the provision of new or extended waste collection facilities through the LDF process.	

Type of Indicator: CORE No/Ref: 6b	Indicator: Amount of municipal waste arising and managed by management type, and the percentage each management type represents of the total waste management.	
Other Indicator Refs:		
Data Source:	Cumbria County Council Minerals and Waste Team: BVPI Household and municipal waste statistics for Cumbria 2005/06	
Spatial Scale Measured:	County wide	
Linkage with other strategy/plan	<i>Planning Cumbria</i> , Cumbria and Lake District Joint Structure Plan 2001-2016 LDNP Local Plan Policies W1 – W6 <i>The North West Plan</i> Regional Spatial Strategy Local Strategic Partnership Community Strategies.	
<b>Objective/Commentary:</b>		
We are not a waste collection or waste management authority. These responsibilities lie with the Districts and County Council. We are however a waste planning authority and have a responsibility to actively promote waste minimisation by formulating planning policies which encourage waste management in appropriate locations and reduces the need for landfill, within environmental limits.		
<b>Indicator Measure:</b>		
Actual Target (if any):	Recycling and composting of 33% of household waste. The recovery of value from 67% of municipal waste by 2015	
Where set:	Waste Strategy 2002, DTI	
Actual Achieved Measure:	See table below	
<b>Analysis/Policy Assessment:</b>		
<b>Method of waste management</b>	<b>tonnes</b>	<b>% of municipal waste</b>
Recycled & Composted	95,459	26.65
To landfill	262,803	73.35
TOTAL Municipal waste	358,262	100
Total municipal waste for the year 2005-06 was 358,262 tonnes. This has increased by 0.92% over the previous year for Cumbria.		
The amount of municipal waste that was landfilled decreased by 4%, but the amount of household waste that was landfilled reduced by 6.86%. The amount of household waste composted increased by 14.52% and recycling increased by 17.25% compared with 2004-05. The County Councils BVPI can only break down the information for household waste as initiated by the areas Waste Disposal Authorities. This excludes the commercial waste collected by the District Waste Collection Authorities.		
<b>Method of waste management</b>	<b>tonnes</b>	<b>% of household waste</b>
Recycled	50,723	16.12
Composted	43,464	13.81
To landfill	220,448	70.07
TOTAL household waste	314,635	100
<b>Review of saved policies/LDDs:</b>		
The Issues and Options Report on our Core Strategy sets out a range of spatial development proposals which when developed to Preferred Options stage will inform the need to save or not save the existing Local Plan waste policies. Therefore at this stage in the process it is likely that we will save the relevant policies and review their status in the 2006-07 Annual Monitoring Report.		
<b>Future Actions/Comments:</b>		
We administer the Lake District National Park Sustainable Development Fund, which has been used to support innovative schemes, which encourage waste minimisation, recycling and composting. It will continue to be a source of funding to support new schemes during the next financial year. We will continue to work with the County Council and District Councils to contribute towards the national targets. Through the LDF process we will explore ways of introducing design standards into future planning approvals to ensure that adequate provision is made for households and industry to store recyclable materials on site.		

## 8.11 Spatial Strategy

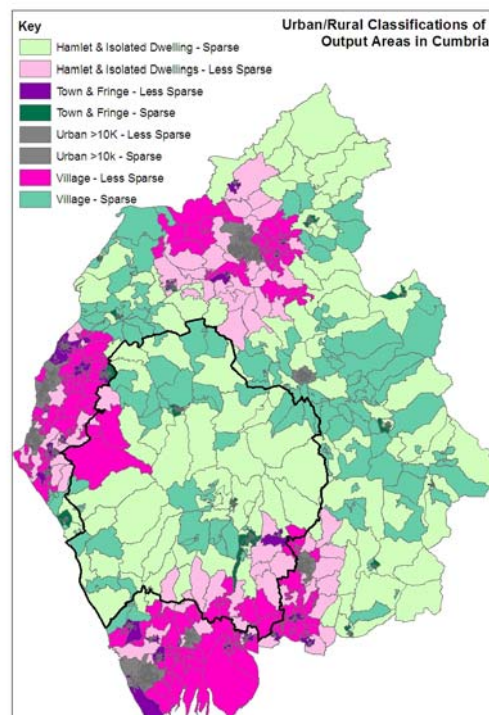
**Spatial Development Strategy:** The Local Plan identifies 20 'larger settlements' on the basis of their physical size, density of development, range and level of services, infrastructure capacity and resident population. Development boundaries have been defined for these settlements and any new development is expected to take place within these boundaries. The Plan also identifies 36 'villages' which are smaller in scale, have fewer community facilities and generally present fewer opportunities for additional development. No development boundaries have been defined because of the strong relationship between village and surrounding countryside and any new development is expected to be well related to existing development. The nature and scale of development in the villages should be of a nature and scale appropriate to the needs of the local community. In order to maintain the rural character of the area new development is required to be closely related to the existing larger settlements and villages where the majority of the National Park's population lives. Development in the open countryside is strictly controlled.

The Cumbria and Lake District Joint Structure Plan promotes a sustainable development strategy in ways that are relevant to the issues and characteristics of the area. Within the National Park, development is focused in towns and villages to help sustain local services, meet local needs and support rural businesses. Exceptionally, development in the open countryside is allowed in specified circumstances. Specific guidance is provided for development within the main towns of Keswick, Ambleside, and Windermere/Bowness. The Structure Plan seeks to enable the Local Development Framework to create a suitable development framework and hierarchy through assessing the roles, functions and capacity of towns and villages to accommodate development and to identify the range and scale of development appropriate to each settlement, based on the needs of the locality.

### Contextual

#### Urban / Rural Classification

The classification is mapped by Output Area (see map). This shows that most of the National Park falls under the sparse side of the classification. Most of the National Park is classified as either hamlet and isolated dwelling or village. The various proportions of this distribution are shown in Table 3 overleaf and are compared with the rest of Cumbria.



**Table 3 : Percentage Output Areas In Each Rural/Urban Classification**

Definition	LDNP	Rest of Cumbria
Hamlet and Isolated Dwellings - Sparse	22.2	5.0
Village - Sparse	25.1	7.2
Town and Fringe - Sparse	25.1	4.8
Urban > 10k - Sparse	0.0	3.3
Hamlet and Isolated Dwellings - Less Sparse	10.6	4.4
Village - Less Sparse	12.1	11.3
Town and Fringe - Less Sparse	3.9	15.2
Urban > 10k - Less Sparse	1.0	48.8
Total Output Areas	100	100

Source: ODPM

### Detailed Population analysis for the National Park

Total no.	Under 16	16-19	20-29	30-59	60-74	75 or more
41650	6266	1759	3983	17684	7830	4128
Percentage	51.04	4.22	9.56	42.46	18.80	9.91
Gender	<b>Male</b>	48.65	<b>Female</b>	51.34		

Source: Census 2001

Census data shows that the population of the National Park has proportionately fewer children under the age of 16 than elsewhere in Cumbria (15.04% in the national Park, 19.21% in the rest of Cumbria) and slightly less people of working age. The proportion of the population over 60 is greater than for Cumbria (18.80% in the National Park, 15.28% in the rest of Cumbria) with far greater representation in the National Park for people from aged 75 (9.91% in the National Park compared with 8.38% in the rest of Cumbria).

Type of Indicator: Local No/Ref:	Indicator: Spatial spread of development in larger settlements, villages and the open countryside: a) locations of housing, employment land and services and facilities completed b) locations of housing, employment land and services and facilities available (with planning permission or allocated)
Other Indicator Refs:	
Data Source:	Internal monitoring systems for housing, employment and retail and other services
Spatial Scale Measured:	National Park wide
Linkage with other strategy/plan:	
Objective/Commentary:	
<p>This indicator is intended to assess the performance of Local Plan policies NE1, NE2 and NE3 and to inform the development of a suitable spatial development strategy for the Local Development Framework. A sustainable approach relevant to the geographic circumstances of the area which enables communities within the National Park to be sustained in an innovative way is sought.</p> <p>The existing strategy in the Local Plan has endeavoured to strike a balance between enabling new development and service provision in a range of towns and villages throughout the National Park, where development is needed and most usefully located while sustaining the character of the area. It has provided opportunity and certainty to people, including developers and decision makers. It is important that we review where and what types of development have been allowed as one element of the research required which will inform the development of the spatial development strategy for the LDF.</p>	
Indicator Measure	
Actual Target (if any):	
Where Set:	
Actual Achieved Measure:	
Analysis/Policy Assessment:	
Review of saved policies/LDDs:	
<p>The saved policies in the Local Plan continue to provide the guidance necessary for our Development Control Officers to fulfil their day-to-day functions and so remain valid in the immediate term.</p> <p>The Cumbria and Lake District Joint Structure Plan 2001 – 2016 was adopted in April 2006. The suite of policies which it introduces, is designed to provide the strategic policy framework which directs future development in Cumbria and the Lake District National Park. As it stands it does not supersede policies in the Local Plan.</p> <p>The Issues and Options Report on our Core Strategy sets out a range of proposals which when developed to Preferred Options stage will inform the need to save or not save the existing Structure and Local Plan policies. Therefore at this stage in the process we will save the relevant policies and review their status in the 2006-07 Annual Monitoring Report.</p>	
Future Actions/Comments:	

It is intended to undertake monitoring of planning applications for housing, employment and services/facilities to assess where these developments are being located to inform the development strategy for the LDF Core Strategy. Unfortunately the post dealing with many of our monitoring requirements is currently vacant so this will be dependent on adequate resources being provided and priority given to progressing this piece of work. The SWIFT database of planning applications does not currently record the relevant information needed to analyse the data so the GIS system will need to be utilised to initially establish the locations of developments and enable this to be added to the SWIFT database. This should then allow appropriate analysis of the data to provide baseline information.

Research commissioned by the North West Regional Assembly on the role and function of Key Service Centres has now been completed and will provide the basis on which to undertake further research for all the larger settlements within the National Park. This further research intends to assess the range and scale of development appropriate to each settlement, having regard to the needs of the locality, the capacity of existing services to accommodate development, and the size, character and environmental capacity of the settlements to accommodate further development. This research is to be progressed as part of the evidence gathering for the Core Strategy. This research is dependent on the necessary funding being made available.

---

## Summary Report on Core Indicators

Indicator Ref	Indicator	Target (if any)	Actual Achieved	Future Actions/Comments	Action on saved policies/LDDs
<b>Business Development</b>					
1a	Amount of floorspace developed for employment by type	-	971m2	Refinements to NPA DC Planning Applications Database. Secure resources	Saved policies to be retained pending future development of LDDs
1b	Amount of floorspace developed for employment by type, in employment or regeneration areas	-	N/A as there are no employment or regeneration areas in the National park	-	N/a
1c	Amount of floorspace by employment type, which is on previously developed land	-	446m2/46%	Refinements to NPA DC Planning Applications Database. Secure resources	Saved policies to be retained pending future development of LDDs
1d	Employment land available by type	3Ha	7.8579Ha	Refinements to NPA DC Planning Applications Database. Secure resources	Saved policies to be retained pending future development of LDDs
1e	Losses of employment land in (i) employment regeneration areas and (ii) local authority area	-	1 loss – local authority area	Refinements to NPA DC Planning Applications Database. Secure resources	Saved policies to be retained pending future development of LDDs
1f	Amount of employment land lost to residential development	-	No loss	Refinements to NPA DC Planning Applications Database. Secure resources	Saved policies to be retained pending future development of LDDs
<b>Housing</b>					
2a	Housing trajectory showing: <ul style="list-style-type: none"> <li>• Net additional dwellings over previous 5 year period or since the start of the relevant development plan document period, whichever is the longer;</li> <li>• Net additional dwellings for the current year;</li> <li>• Projected net additional dwellings up to the end of the</li> </ul>	-	-	Refinements to NPA DC Planning Applications Database. Secure resources	Saved policies to be retained pending future development of LDDs

	<p>relevant development plan document period or over a 10 year period from its adoption, whichever is the longer;</p> <ul style="list-style-type: none"> <li>• The annual net additional dwelling requirement; and</li> <li>• Annual average number of net additional dwellings needed to meet overall housing requirements, having regard to previous year's performance.</li> </ul>				
2b	Percentage of new and converted dwellings on previously developed land	National – 60% Regional – 50% BVPI106 – 60%	72%	Urban capacity studies currently being undertaken. Due to be completed January 2007.	
2c	<ul style="list-style-type: none"> <li>• Percentage of dwellings completed at:</li> <li>• Less than 30 dwellings per Ha;</li> <li>• Between 30 and 50 dwellings per Ha; and</li> <li>• Above 50 dwellings per Ha.</li> </ul>	30 and 50 dwellings per hectare	<p>Less than 30 – 40.9% Between 30 and 50 – 18.01% Above 50 – 40.9%</p>		
2d	Affordable housing completions		Not available	Refinements to NPA DC Planning Applications Database. Secure resources	
<b>Transport</b>					
3a	Amount of completed non-residential development within UCOs A, B and D complying with car-parking standards set out in the local development framework	-	Not available	Mechanisms put in place to capture data on NPAs DC Planning Applications Database from 2006	Saved policies to be retained pending future development of LDDs
3b	Amount of new residential development within 30 minutes public transport time of: a GP; a hospital; a primary school; a secondary school; areas of employment; and a major retail centre(s)	-	Not available	Pursue discussions with CAPITA and other District Authorities in 2006	Saved policies to be retained pending future development of LDDs
<b>Local Services</b>					
4a	Amount of completed retail, office and leisure development	-	Not available	Secure resources and set up monitoring	Saved policies to be retained pending future

				system for retail, office and leisure developments.	development of LDDs
4b	Amount of completed retail, office and leisure development in town centres	-	Not available		Saved policies to be retained pending future development of LDDs
4c	Amount of eligible open spaces managed to Green Flag Award standard	-	Not available	Completion of open spaces assessment in 2006. Completion of the data entry stage of the project in 2007 to provide the data for the next AMR.	Saved policies to be retained pending future development of LDDs
<b>Minerals</b>					
5a	Production of primary land won aggregates	Aggregate guidelines – sub-regional apportionate figures of sand and gravel	The three year average annual sales 2001 – 2004 for Cumbria were 3.9 million tonnes/year and 900 000 tonnes/year of sand and gravel		
5b	Production of secondary/recycled aggregates				
<b>Waste</b>					
6a	Capacity of new waste management facilities by type				
6b	Amount of municipal waste arising, and managed by management type, and the percentage each management type represents of the waste managed.	Recycling and composting of 33% of household waste. The recovery of value from 67% of municipal waste by 2015	95,459 tonnes (26.65% of municipal waste)  262,803 tonnes (73.35%) of municipal waste to landfill		
<b>Flood Protection and Water Quality</b>					
7	Number of planning permissions granted contrary to the advice of the Environment Agency on either flood defence grounds or water quality	-	5	Explore developments to NPA DC planning Applications Database	
<b>Biodiversity</b>					
78	Change in areas and populations of biodiversity importance, including:		Not available	Refinements to NPA DC Planning	

	<ul style="list-style-type: none"> <li>I. Change in priority habitats and species (by type); and</li> <li>II. Change in areas designated for their intrinsic environmental value including sites of international, national, regional, sub-regional or local significance.</li> </ul>			Applications Database and GIS	
Renewable Energy					
9	Renewable energy capacity installed by type	443MW	Not available	Refinements to NPA DC Planning Applications Database and GIS	

## **9.0 Process indicators: Progress on Local Development Scheme**

### **9.1 Background**

The timetable for the creation of documents within the Local Development Framework for the period April 2005 – March 2006 is specified in the March 2005 version of the Local Development Scheme (referred to in this section as 'the Scheme' ), is shown in table 2. The Scheme was approved by this Authority in February 2004. It was submitted to the Secretary of State on 24 March 2005.

We have summarised the status of each document in this report in the following Tables 3-12. This table shows that all milestones within the Scheme have been met for the period of 1 April - 31 March 2006. They also show that all milestones within the period 1 April 2006 – 31 March 2007 are on target and are being completed on schedule. We have therefore not proposed any changes to the Scheme until we complete a review in April 2007. This review will include a more detailed analysis of the policies that will need to be saved from those we currently use in the Local Plan and Structure Plan until the adoption of Local Development Documents within the Local Development Framework and after the adoption of Regional Spatial Strategy.

### **9.2 Our approach to delivering the new planning system**

Our approach to the new planning system has been twofold:

1. To create an interim strategic framework until RSS is adopted – through continuing with our review of the Joint Structure Plan; and
2. Embrace the new Local Development Framework system fully - by saving policies from the Local Plan and Joint Structure Plan and allocating our time to creating a range of Local Development Documents with real community engagement.

### **9.3 Recognition of our approach**

We were chosen to be part of a nationwide study into the new spatial planning system. We have been chosen because we are acknowledged to be fully embracing the new system and we also represent a Planning Authority working within a truly rural environment. We continue to provide information into the study and any feedback helps us make improvements in our work.

We were also successful in gaining central Government financial support to develop community capacity to survey and understand their own needs. This type of work will support the ethos of 'bottom up planning' and speed up the process of decision-making. The programme, funded through Invest to Save budget, will begin formally in January 2007.

### **9.4 Other progress 2005-2006**

**Analysis of Community Strategies :-** In accordance with our timetable, we continue to build and maintain stronger relationships with Local Strategic Partnerships. In South Lakeland, we co-developed a working group to ensure collaboration between ourselves, District Council and County Council. This continues to focus on the development of Local Development Frameworks and will build on the existing collaborative work through the LSP Affordable Housing Task Group. We have already ensured consistency between our policy approach on housing to

support the need identified in the community strategy. We are also working closely with Eden LSP and West Cumbria LSP following changes to their structure. And we are now an Executive member of the Cumbria Strategic Partnership, contributing to the refreshment of the Cumbria Sub regional Strategy. All LSPs were asked to provide initial contributions to inform the preparations of our issues and options consultation for the Local Development Framework.

**Analysis of Parish Plans :-** We have always agreed that Parish Plans are a real way to engage people in planning at the grass roots level. In accordance with our timetable, we have continued to work within our agreed protocol to support Parish Plan groups with Voluntary Action Cumbria, Cumbria County Council, Cumbria Association of Local Councils and South Lakeland District Council. We have also undertaken a review of all completed Parish Plans which provides clear information about community needs which has supported the development of the issues and options consultation for the Local Development Framework. In January 2006, we undertook workshops in association with Voluntary Action Cumbria, which help Parish Plan groups to implement actions in their plans.

**Review of Strategic Area Management Plans/ Area Action Plans:-** In 2004, we proposed a review of how the National Park Management Plan was translated into action on the ground through area plans. We also wanted to review how area management plans could complement any Area Action Plans which could form part of the Local Development Framework. In accordance with our timetable, this review was completed with the support of the Countryside Agency and involved consultation with partners and stakeholders. The review resulted in a proposal that we should bring together the review of the Management Plan and the creation of the Local Development Framework in 2006. This will avoid duplication and enable clear Area Management Plans and Action Plans to be identified and created together, as appropriate. This will make things clearer to partners and stakeholders alike. We therefore began the review of both documents in November 2005 with extensive public consultation about a new Vision which would lead both documents. The new Vision was agreed in May 2006 by a new partnership of organisations.

**State of the Park Report:** In accordance with our timetable, we established a partnership made up of organisations with a commitment to work together to provide reliable information about the state of the Lake District National Park. Because the National Park is a complex area, we first agreed the key elements which make up the National Park which we would need information about. We agreed that the key elements of the Park would be those 'themes' defined within the current National Park Management Plan.

There are many ways of measuring the state of each of these themes so we agreed to take a very focussed approach. We first looked at a long list of measurements that would provide us with information about each theme. Because the National Park is so diverse, this first list of measurements was endless. We therefore chose from the list, the key measurements that we thought would provide the broadest indication about the state of each theme and changes over time. Annex 1 provides a summary of all the indicators.

Some of these measurements can be calculated from data that is available now. However, because this is our first State of the Park Report, some measurements were agreed as highly important for us to measure in the future, even though we did not have data immediately. A copy of the full report is available from [www.lake-district.gov.uk](http://www.lake-district.gov.uk)



**Tables 5 – 14: Current status of development plan documents as described in the Local Development Scheme**

Table 5	CORE STRATEGY
<b>Description</b>	
Role and context	This is the strategic document setting out the vision for the National Park, objectives and spatial strategy of the Lake District National Park. It will identify the strategic approach to key subjects such as housing, transport and economy. It will guide development control decision making but not contain specific policies. It will replace strategic elements of the adopted Cumbria and Lake District National Park Joint Structure Plan and the adopted Lake District National Park Local Plan. It will have regard to the Cumbria Local Transport Plan and Community Strategies covering the Lake District National Park.
Status	Development Plan Document.
Geographical coverage	Lake District National Park wide
Conformity	With the Regional Spatial Strategy
<b>Timetable</b>	
Survey Work and Evidence Gathering (pre production)	Feb 2006 - Feb 2007 – completed on target
Consultation on Preferred Options	May 2007 – to be reviewed in 2007 LDS
Submission to SOS	March 2008 - to be reviewed in 2007 LDS
Consultation on submitted document	April 2008 - to be reviewed in 2007 LDS
Pre –enquiry meeting	July 2008 - to be reviewed in 2007 LDS
Examination before Inspector	August/Sept 2008 - to be reviewed in 2007 LDS
Adoption	June 2009 - to be reviewed in 2007 LDS
Monitoring and review	Lifespan is 10 years although it will be monitored annually and considered for review every 3 years.
<b>Production</b>	
Lead Team Political and programme management	Community Development Lake District National Park Authority's Plans Working Group to advise full Authority. Full Lake District National Park Authority resolution required for submission and adoption.
Resources	Produced internally using existing resources. External input will be required in the form of studies.
Community and Stakeholder Involvement	Initial workshops in January 2006 developed a vision for the National Park which will form the direction of the core strategy and will involve stakeholders (housing, developers, business etc), District Councils and town/parish councils. Questionnaires will be published alongside workshops and focus groups in July/Sept/November. The results of these activities, along with a sustainability appraisal, will inform the publication of the Preferred Options Report in May 2007. Local Strategic Partnerships (LSPs) to form key link to community planning.

Table 6	<b>MINERALS AND WASTE CORE STRATEGY</b>
<b>Description</b>	
Role and context	This is the strategic document setting out the objectives and spatial strategy for minerals and waste development within the Lake District National Park. It will guide development control decision making but not contain specific policies. It will replace strategic elements of the adopted Cumbria and Lake District National Park Joint Structure Plan and the adopted Lake District National Park Local Plan. It will complement the Cumbria Minerals and Waste Core Strategy for areas of the county outside the Lake District National Park.
Status	Development Plan Document.
Geographical coverage	Lake District National Park wide
Conformity	With the RSS
<b>Timetable</b>	
Survey Work and Evidence Gathering (pre production)	Feb 2006 - Feb 2007 – completed on target
Consultation on Preferred Options	May 2007 - to be reviewed in 2007 LDS
Submission to SOS Consultation on submitted document	March 2008 - to be reviewed in 2007 LDS April 2008 - to be reviewed in 2007 LDS
Pre-enquiry meeting	July 2008 - to be reviewed in 2007 LDS
Examination before Inspector	August/Sept 2008 - to be reviewed in 2007 LDS
Adoption	Jan/Feb 2009 - to be reviewed in 2007 LDS
Monitoring and review	Monitored annually and reviewed every 3 years.
<b>Production</b>	
Lead Team Political and programme management	Community Development Lake District National Park Authority's Plans Working Group to advise full Authority. Full Lake District National Park Authority resolution required for submission and adoption.
Resources	Produced internally using existing resources. External input will be required in the form of studies.
Community and Stakeholder Involvement	Alongside development of the Core Strategy, questionnaires will be published alongside workshops and focus groups in July/Sept/November. The results of these activities will inform the publication of the Preferred Options Report. These will involve stakeholders (housing, developers, business etc), District Councils and town/parish councils. Local Strategic Partnerships (LSPs) to form key link to community planning with Parish Planning, Market Towns Initiatives.

Table 7	JOINT STRUCTURE PLAN
<b>Description</b>	
<p>Role and context</p> <p>Status</p> <p>Geographical coverage</p> <p>Conformity</p>	<p>This is the strategic document setting out the vision, objectives and spatial strategy of the Lake District National Park within the context of Cumbria. As it is part of the old planning system, it will provide the strategic planning framework until the adoption of RSS. It identifies the strategic approach to key subjects such as housing, transport and economy both within the Lake District National Park and in Cumbria as a whole. Its saved policies together with those of the Local Plan will guide development control decision making until the adoption of the new Core Strategy. It will have regard to the Cumbria Local Transport Plan and Community Strategies covering the Lake District National Park.</p> <p>Development Plan Document.</p> <p>Lake District National Park wide</p> <p>With the Regional Spatial Strategy (RSS),</p>
<b>Timetable</b>	
<p>Examination before Inspector</p> <p>Adoption</p> <p>Monitoring and review</p>	<p>September/October 2004</p> <p>6 April 2006 – completed on target</p> <p>‘Saved’ for 3 years from adoption or until RSS is adopted whichever is sooner</p>
<b>Production</b>	
<p>Lead Team</p> <p>Political and programme management</p>	<p>Community Development</p> <p>Lake District National Park Authority's Develop Plans Working Group to advise full Authority. Full Lake District National Park Authority resolution required for submission and adoption.</p>
<p>Resources</p>	<p>Produced jointly with Cumbria County Council, using existing resources.</p>
<p>Community and Stakeholder Involvement</p>	<p>Workshops and focus groups were held over a 5 year prior to publication of the Deposit version. These involved stakeholders (housing, developers, business etc), District Councils and town/parish councils. A full description of how we ensured community involvement in the preparation of this document can be seen on <a href="http://www.lake-district.gov.uk">www.lake-district.gov.uk</a>.</p>

Table 8	<b>DEVELOPMENT CONTROL POLICIES (part of Core Strategy)</b>
<b>Description</b>	
Role and context	This document will be developed at the same time as the Core Strategy but will have individual status which will enable it to be reviewed separately when required. It will contain a limited suite of policies to be used in the determination of planning applications. These will ensure that all new development in the Lake District National Park contributes to achieving the Core Strategy.
Status	Development Plan Document.
Geographical coverage	Lake District National Park wide (will exclude site and area specific policies).
Conformity	With the Core Strategy.
<b>Timetable</b>	
Survey Work and Evidence Gathering (pre production)	Feb 2006 - Feb 2007 – completed on target
Consultation on Preferred Options	May 2007 - to be reviewed in 2007 LDS
Submission to SOS	March 2008 - to be reviewed in 2007 LDS
Consultation on submitted document	April 2008 - to be reviewed in 2007 LDS
Pre-enquiry meeting	July 2008 - to be reviewed in 2007 LDS
Examination before Inspector	August/Sept 2008 - to be reviewed in 2007 LDS
Adoption	Jan/Feb 2009 - to be reviewed in 2007 LDS
Monitoring and review	Monitored annually and reviewed every 3 years.
<b>Production</b>	
Lead Team Political and programme management	Community Development Lake District National Park Authority's Plans Working Group to advise full Authority. Full Lake District National Park Authority resolution required for submission and adoption.
Resources	Produced internally using existing resources (see Appendix 1). Specialist input from, in particular, the fields of design, conservation, Development Control and landscape.
Community and Stakeholder Involvement	Alongside development of the Core Strategy, questionnaires will be published alongside workshops and focus groups in July/Sept/November. The results of these activities will inform the publication of the Preferred Options Report. These will involve stakeholders (housing, developers, business etc), District Councils and town/parish councils. Local Strategic Partnerships (LSPs) to form key link to community planning along with Parish Planning, Market Towns Initiatives.

<b>Table 9</b>		<b>MINERALS and WASTE SITE SPECIFIC ALLOCATIONS AND POLICIES</b>	
<b>Description</b>			
Role and context	This document will be developed at the same time as the Core Strategy but will have individual status which will enable it to be reviewed separately when required. It will allocate land for specific uses and include policies for the delivery of the site specific allocations.		
Status	Development Plan Document.		
Geographical coverage	Lake District National Park wide.		
Conformity	With Minerals and Waste Core Strategy.		
<b>Timetable</b>			
Survey Work and Evidence Gathering (pre production)	Feb 2006 - Feb 2007 – completed on target		
Consultation on Preferred Options	May 2007 - to be reviewed in 2007 LDS		
Submission to SOS	March 2008 - to be reviewed in 2007 LDS		
Consultation on submitted document	April 2008 - to be reviewed in 2007 LDS		
Pre-enquiry meeting	July 2008 - to be reviewed in 2007 LDS		
Examination before Inspector	August/Sept 2008 - to be reviewed in 2007 LDS		
Adoption	Jan/Feb 2009 - to be reviewed in 2007 LDS		
Monitoring and review	Monitored annually and reviewed every 3 years.		
<b>Production</b>			
Lead Team	Community Development		
Political and programme management	Lake District National Park Authority's Plans Working Group to advise full Authority. Full Lake District National Park Authority resolution required for submission and adoption.		
Resources	Produced in house using existing resources		
Community and Stakeholder Involvement	Alongside development of the Core Strategy, questionnaires will be published alongside workshops and focus groups in July/Sept/November. The results of these activities will inform the publication of the Preferred Options Report. These will involve stakeholders (housing, developers, business etc), District Councils and town/parish councils. Local Strategic Partnerships (LSPs) to form key link to community planning along with Parish Planning, Market Towns Initiatives.		

<b>Table 10</b>	<b>HOUSING SITE SPECIFIC ALLOCATIONS AND POLICIES</b>
<b>Description</b>	
<p>Role and context</p> <p>Status</p> <p>Geographical coverage</p> <p>Conformity</p>	<p>This document will contain policies which apply to specific sites, locations or areas within the National Park. It allocates land having regard to principles of sustainability as well as providing the policy framework to meet the housing requirements of the Lake District National Park. It will also contain allocations to achieve the Core Strategy. All policies/allocations to be illustrated on the separate Proposals Map.</p> <p>Development Plan Document.</p> <p>Identified areas of the National Park.</p> <p>Replaces housing policies within the adopted Lake District National Park Local Plan (see Appendix 2). Will be in conformity with Joint Structure Plan Policy H20 and H21 which will be 'saved' in the Core Strategy.</p>
<b>Timetable</b>	
<p>Survey Work and Evidence Gathering (pre production)</p> <p>Consultation on Preferred Options</p> <p>Submission to SOS</p> <p>Consultation on submitted document</p> <p>Pre-enquiry meeting</p> <p>Examination before Inspector</p> <p>Adoption</p> <p>Monitoring and review</p>	<p>Feb 2006 - Feb 2007 – completed on target</p> <p>May 2007 - to be reviewed in 2007 LDS</p> <p>March 2008 - to be reviewed in 2007 LDS</p> <p>April 2008 - to be reviewed in 2007 LDS</p> <p>July 2008 - to be reviewed in 2007 LDS</p> <p>August/Sept 2008 - to be reviewed in 2007 LDS</p> <p>Jan/Feb 2009 - to be reviewed in 2007 LDS</p> <p>Monitored annually and reviewed every 3 years.</p>
<b>Production</b>	
<p>Lead Team</p> <p>Political and programme management</p>	<p>Community Development</p> <p>Lake District National Park Authority's Plans Working Group to advise full Authority. Full Lake District National Park Authority resolution required for submission and adoption.</p>
<p>Resources</p>	<p>Produced internally using existing resources (see Appendix 1). Specialist input will come particularly from those in the fields of Development Control. External input will be required in the form of housing needs studies.</p>
<p>Community and Stakeholder Involvement</p>	<p>Alongside development of the Core Strategy, questionnaires will be published alongside workshops and focus groups in July/Sept/November. The results of these activities will inform the publication of the Preferred Options Report. Local Strategic Partnerships (LSPs) to form key link to community planning along with Parish Planning, Market Towns Initiatives.</p>

Table 11	<b>PROPOSALS MAP AND INSETS</b>
<b>Description</b>	
Role and context	The development plan policies and proposals illustrated in map form. Replaces the Proposals Map of the adopted Lake District National Park Local Plan.
Status	Development Plan Document
Geographical coverage	Lake District National Park wide
Conformity	With adopted development plan documents
<b>Timetable</b>	
Survey Work and Evidence Gathering (pre production)	Feb 2006 - Feb 2007 – completed on target
Consultation on Preferred Options	May 2007 - to be reviewed in 2007 LDS
Submission to SOS	March 2008 - to be reviewed in 2007 LDS
Consultation on submitted document	April 2008 - to be reviewed in 2007 LDS
Pre – enquiry meeting	July 2008 - to be reviewed in 2007 LDS
Examination before Inspector	August/Sept 2008 - to be reviewed in 2007 LDS
Adoption	Jan/Feb 2009 - to be reviewed in 2007 LDS
Monitoring and review	Monitored annually and reviewed every 3 years. It will be updated to conform with any new DPD that is created.
<b>Production</b>	
Lead Team	Community Development
Political and programme management	Lake District National Park Authority's Plans Working Group to advise full Authority. Full Lake District National Park Authority resolution required for submission and adoption.
Resources	Produced in house using existing resources

**(c) SUPPLEMENTARY PLANNING DOCUMENTS**

<b>Table 12</b>	<b>HOUSING NEEDS SURVEYS</b>
<b>Description</b>	
Role and context	Sets out further detail of policies H20/H21 in the Joint Structure Plan.
Status	Supplementary Planning Document
Geographical coverage	Lake District National Park wide
Conformity	With Joint Structure Plan and then Core Strategy upon adoption
<b>Timetable</b>	
Adopted Monitoring and review	5 years
<b>Production</b>	
Lead Team	Community Development
Political and programme management	Lake District National Park Plans Working Group to advise full Authority.
Resources	Produced internally using existing resources (see Appendix 1).
Community and Stakeholder Involvement	Public consultation and focus groups as set out in the Statement of Community Involvement. A full description of how we ensured community involvement in the preparation of this document can be seen on <a href="http://www.lake-district.gov.uk">www.lake-district.gov.uk</a> .

Table 13	<b>STATEMENT OF COMMUNITY INVOLVEMENT</b>
<b>Description</b>	
<p>Role and context</p> <p>Status</p> <p>Geographical coverage</p> <p>Conformity</p>	<p>This document will set out how the Lake District National Park Authority intends to achieve continuous community involvement in the preparation of the Local Development Framework and planning applications. Community engagement in planning is crucial if we are to work together to achieve the purposes of a National Park. In 2005, we explored the range of new opportunities with focus groups from the community. We spent the time and resources preparing a document which is innovative and understood by key stakeholders.</p> <p>Required by the Regulations</p> <p>Lake District National Park wide</p> <p>With Core Strategy</p>
<b>Timetable</b>	
<p>Survey Work and Evidence Gathering (pre production)</p> <p>Consultation on Preferred Options</p> <p>Submission to SOS</p> <p>Consultation on submitted document</p> <p>Adoption</p> <p>Monitoring and review</p>	<p>April/May 2005 – complete – on target</p> <p>June/July 2005 – complete - on target</p> <p>November 2005 – complete - on target</p> <p>December 2005 – complete - on target</p> <p>June 2006 - on target</p> <p>Every 3 years</p>
<b>Production</b>	
<p>Lead Team</p> <p>Political and programme management</p>	<p>Community Development</p> <p>Lake District National Park Authority's Plans Working Group to advise full Authority. Full Lake District National Park Authority resolution required for submission and adoption.</p>
<p>Resources</p>	<p>Produced internally using existing resources (see Appendix 1).</p>
<p>Community and Stakeholder Involvement</p>	<p>A full description of how we ensured community involvement in the preparation of this document can be seen online : <a href="http://www.lake-district.gov.uk">www.lake-district.gov.uk</a>.</p>

<b>Table 13</b>		<b>SUPPLEMENTARY PLANNING DOCUMENT : WIND ENERGY</b>	
<b>Description</b>			
Role and context	Sets out further detail of policies in the Joint Structure Plan.		
Status	Supplementary Planning Document		
Geographical coverage	Cumbria wide		
Conformity	With Joint Structure Plan and then Core Strategy upon adoption		
<b>Production</b>			
Lead Team	Cumbria County Council in partnership with District councils		
Political and programme management	Lake District National Park Plans Working Group to advise Committees and full Authority.		
Resources	Produced through partnership working.		
Community and Stakeholder Involvement	Standard public consultation and focus groups as set out in the Statement of Community Involvement for all partners		
<b>Timetable</b>	<b>Proposed</b>	<b>Current status</b>	<b>Comment</b>
			The timetable in the 2005/6 LDS was delayed due to complications in setting up a Joint Planning Committee to approve the SPD. We are now on target delivering within the 2006/07 LDS which will be reported in the next AMR.

<b>Table 13</b>		<b>SUPPLEMENTARY PLANNING DOCUMENT : LANDSCAPE CHARACTER</b>	
<b>Description</b>			
Role and context	Sets out further detail of policies in the Joint Structure Plan.		
Status	Supplementary Planning Document		
Geographical coverage	Cumbria wide		
Conformity	With Joint Structure Plan and then Core Strategy upon adoption		
<b>Production</b>			
Lead Team	Cumbria County Council in partnership with District councils		
Political and programme management	Lake District National Park Plans Working Group to advise Committees and full Authority.		
Resources	Produced through partnership working.		
Community and Stakeholder Involvement	Standard public consultation and focus groups as set out in the Statement of Community Involvement for all partners		
<b>Timetable</b>	<b>Proposed</b>	<b>Current status</b>	<b>Comment</b>
	Not due to start until April 2006 which is not within the reporting period for this AMR	We are on target and we are working in partnership	

## Annex 1: Key State of the Park Indicators

Ref	Sub ref	Group indicator and individual indicators
<b>SOP1</b>	SOP1.1	<b>Changes to landscape character</b> Number of changes inconsistent and consistent with defined landscape character
	SOP1.2	Changes in townscape character.
	SOP1.3	Mapping tranquillity including light and noise pollution
	SOP1.4	Changes in vegetation mosaics
<b>SOP2</b>	SOP2.1	<b>Changes due to conservation based management practices</b> Area of woodland managed within the Woodland Grant Scheme
<b>SOP3</b>	SOP3.1	<b>Changes due to recreation</b> Number of fell path erosion scars
<b>SOP4</b>		<b>Changes in distinctive, endangered or indicative species and habitats</b>
	SOP4.1	Measures of the status of selected groups of species from the Cumbria Biodiversity Action Plan
	SOP4.2	Measurement of two habitats from the Cumbria Biodiversity Action Plan.
<b>SOP5</b>	SOP5.1	<b>Changes in Sites of Special Scientific Interest</b> Condition of SSSIs
<b>SOP6</b>	SOP6.1	<b>Changes in water quality</b> Measurements of water quality (still and running)
<b>SOP7</b>		<b>Changes in conservation based farming and land management practices</b>
	SOP7.1	Area and % of the National Park managed in line with conservation objectives including land in the following schemes: ESA, Higher Level Scheme, Entry Level Scheme or Organic Entry Level Scheme agreements.
<b>SOP8</b>		<b>Changes in farming economy</b>
	SOP8.1	Net farm income
	SOP8.2	% farm income from non-farming enterprise and the additional value of produce
<b>SOP9</b>		<b>Changes in structure of farming</b>
	SOP9.1	Number of people living in the National Park
	SOP9.2	Average size of farm and number of farmsteads occupied by farmers
<b>SOP10</b>		<b>Changes in the wealth of historic features</b>
	SOP10.1	Numbers of archaeological/historic environment features
	SOP10.2	Condition of features
<b>SOP11</b>	SOP11.1	<b>Changes in the character of settlements</b> Number of changes inconsistent and consistent with defined settlement character
<b>SOP 12</b>		<b>Changes in opportunities for outdoor learning</b>
	SOP 12.1	Range of provision in sample areas and value to the economy
	SOP 12.2	Number and profile of people taking part in outdoor education and the benefits received
<b>SOP13</b>	SOP 13.1	<b>Changes in informal learning opportunities</b> Number and type of people attending events, exhibitions or attractions
<b>SOP14</b>		<b>Changes in accessibility to information and interpretation</b>
	SOP 14.1	Type and availability of information, which promotes understanding about general or a specialist aspects of the National Park, from sample sources.

SOP 14.2 Number and profile of people accessing information from sample sources.

Ref	Sub ref	Group indicator and individual indicators
<b>SOP15</b>	SOP15.1	<b>Changes in accessibility</b> Total length of public rights of way that meet 'ease of use survey' standards
	SOP15.2	The length of paths that are available for different categories of people with limited mobility
<b>SOP16</b>	SOP16.1	<b>Changes in recreational activities</b> Profile and number of different activities
<b>SOP17</b>		<b>Changes within the tourism economy</b> The economic value of tourism
<b>SOP18</b>	SOP17.2	The numbers of tourism related
	SOP18.1	<b>Changes in the variety of tourist accommodation</b> The types of accommodation available
<b>SOP19</b>	SOP18.2	Accommodation occupancy levels
	SOP19.1	<b>Changes in the impact from tourism</b> The numbers of tourism related businesses contributing to conservation or sustainable development initiatives
<b>SOP20</b>	SOP19.2	The value of contributions from tourism related businesses
	SOP19.3	Residents perception of tourism
	SOP20.1	<b>Changes in employment</b> Employment and annual income rates by sector
<b>SOP21</b>	SOP20.2	The variety of job opportunities
	SOP21.1	<b>Changes in housing provision</b> Access to affordable housing (ratio of house prices to income)
<b>SOP22</b>	SOP21.2	Number of second homes and type of housing affected
	SOP22.1	<b>Changes in services available and the vibrancy of communities</b> The types of services available in settlements
	SOP22.2	Travel to work patterns
<b>SOP23</b>	SOP22.3	School profiles
	SOP23.1	<b>Changes in use of road</b> Road traffic levels and car parks at key locations
	SOP23.2	Purpose of journeys
<b>SOP24</b>	<b>Changes in use of public transport</b>	
	SOP24.1	Provision and patronage of public transport including ferries
<b>SOP25</b>	SOP24.2	Profile of sustainable transport activities including cycling and walk
	SOP25.1	<b>Changes in route character and safety</b> Changes inconsistent or consistent with a defined rural road character
	SOP25.2	Results from road management studies

### **The Lake District National Park**

This National Park is one of a family of National Parks in the UK. It was created in 1951 and covers some 2,292 square kilometres. Our job is to:

- *conserve and enhance the natural beauty, wildlife and cultural heritage of the National Park; and*
- *promote opportunities for the understanding and enjoyment of its special qualities.*

We also have a duty to:

- *foster the interests of the local community.*

Published, written and edited by the:

Lake District National Park Authority  
Murley Moss  
Oxenholme Road  
Kendal  
Cumbria  
LA9 7RL

Tel: 01539 724555

Fax: 01539 740822

Email: [hq@lake-district.gov.uk](mailto:hq@lake-district.gov.uk)

Website: [www.lake-district.gov.uk](http://www.lake-district.gov.uk)



Text © Lake District  
National Park Authority.



