



# Lake District

National Park Authority

## The Lake District National Park Local Development Framework

### Annual Monitoring Report

for period October 2004-March 2005

(published and submitted to Government Office for NW December 2005)



## **Contents**

- 1.0 Introduction**
- 2.0 Abbreviations**
- 3.0 Location and contextual maps of National Park**
- 4.0 Key findings**
- 5.0 Policy and plan making monitoring strategy**
- 6.0 Matters to address within the Annual Monitoring Report**
- 7.0 Contextual Indicators: Profile of the National Park**
- 8.0 Output indicators**
- 9.0 Process indicator: Progress on Local Development Scheme**

**Annex 1 : Summary of State of the Park Indicators**

## 1.0 Introduction

This is the first Annual Monitoring Report (AMR) prepared by the Lake District National Park Authority under the new Planning and Compulsory Purchase Act 2004.

We will produce this type of report each year and it will tell us two things:

1. Progress we have made to implement the Local Development Scheme – the timetable to create the Local Development Framework for the Lake District National Park.
2. The extent to which the policies set out in the different elements of new Local Development Framework are being achieved.

The report should cover the period 1 April to 31 March each year. The final report must be submitted to the Secretary of State, via Government Office for the North West, by the end of December each year. We will also publish the report on our website.

An Annual Monitoring Report should present an analysis of the core output indicators for Local Development Frameworks ( identified in central government's 'Local Development Framework Core Output Indicators (Update 1/2005)').

It is however accepted in advice from Government Office for the North West that the first AMR will not be able to cover everything set out in national guidance. And in respect to the Lake District National Park Authority, this is relevant because the process to create the new Local Development Framework only begins in earnest from January 2006.

This report therefore aims to do 3 things:

- establish a clear monitoring strategy for us to deliver from 2006 onwards. We are committed to delivering this strategy;
- where possible, provide information relating to existing 'saved' policies from the outgoing Local Plan and Structure Plan;
- provide a progress report on the timetable to deliver our new Local Development Framework.

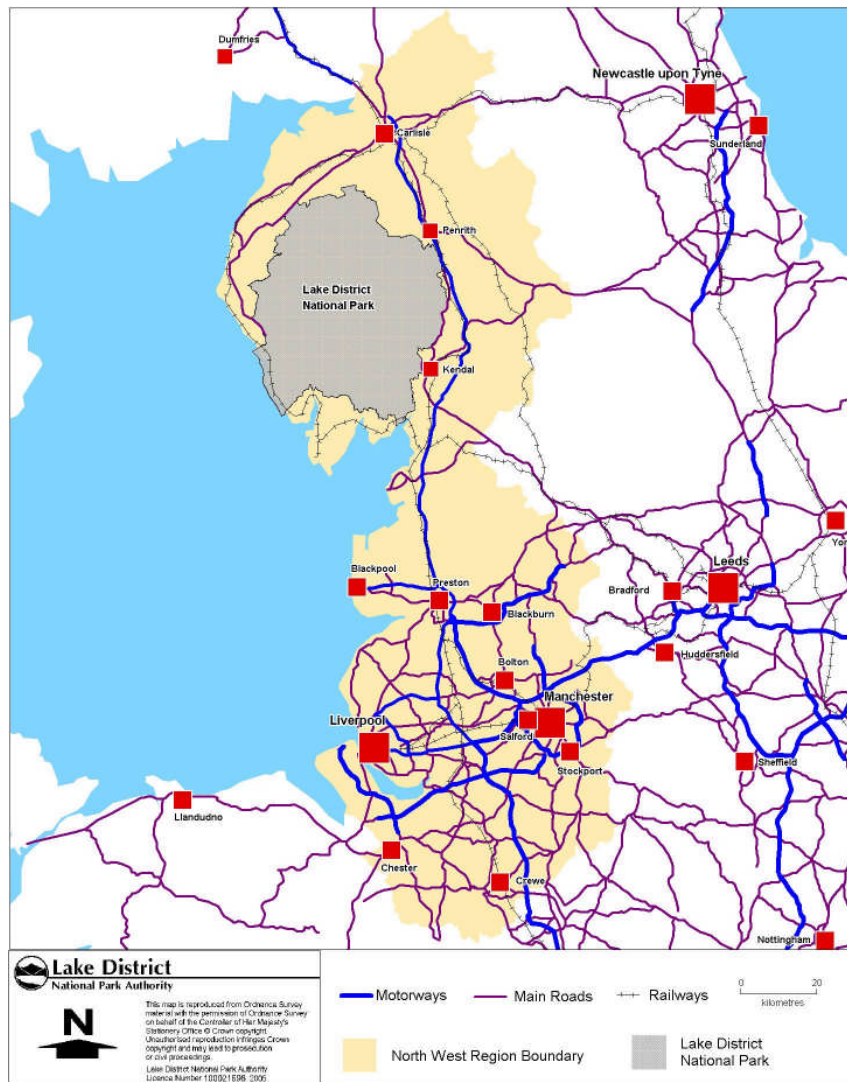
## 2.0 Abbreviations

Whilst we have made every effort to write plain English, there may be use of abbreviations in this document. The following list may assist:

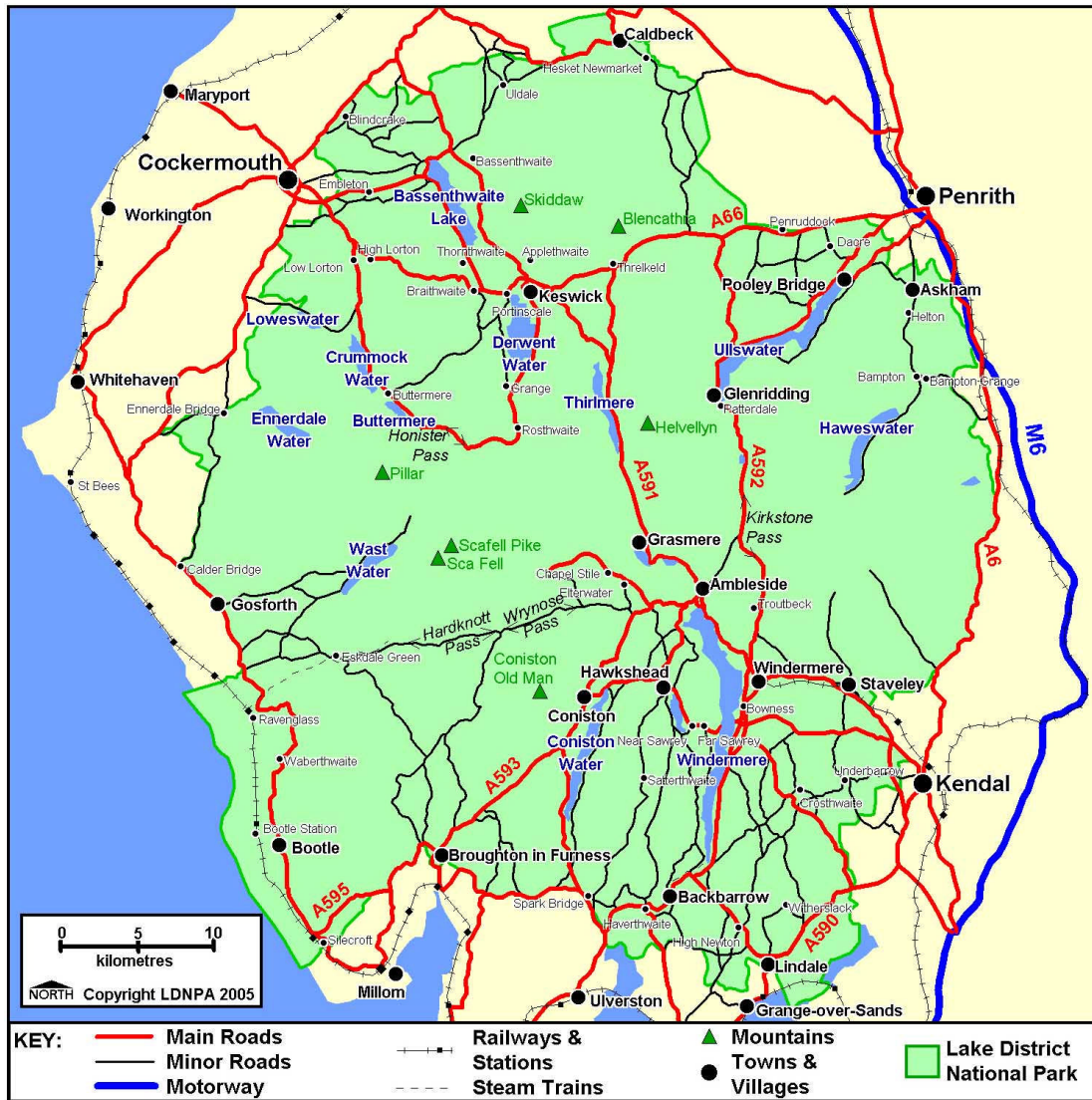
AMR: Annual Monitoring Report  
BAP: Biodiversity Action Plan  
BVPI: Best Value Performance Indicator  
DPD: Development Plan Document ( part of the Local Development Framework )  
JSP: Joint Structure Plan  
LDD: Local Development Document ( part of the Local Development Framework )  
LDF: Local Development Framework  
LDNPA: Lake District National Park Authority  
LDO: Local Development Order  
LDS: Local Development Scheme ( referred to as ' the Scheme ' in this document )  
LSP: Local Strategic Partnership  
LTP: Local Transport Plan  
LUC: Land Use Consultants  
NWRA: North West Regional Assembly  
ODPM: Office of the Deputy Prime Minister  
PPG: Planning Policy Guidance  
PPS: Planning Policy Statement  
RPB: Regional Planning Board ( North West Regional Assembly )  
RPG: Regional Planning Guidance  
RSS: Regional Spatial Strategy  
SEA: Strategic Environmental Appraisal  
SOP: State of the Park Report  
SPD: Supplementary Planning Document  
SPG: Supplementary Planning Guidance

## 3.0 Location and contextual maps

Map 1: The Lake District National Park in the regional context



**Map 2: Lake District National Park**



## 4.0 Key findings

**4.1** A significant influence on planning policy in the last 12 months has been the Examination in Public of the Cumbria and Lake District Joint Structure Plan, held between September and October 2004. The Report of the Panel was received in Jan 2005, by which stage more weight could be attached to the policies in the draft Plan. Proposed Modifications were subsequently prepared and a period of formal consultation took place in September this year. The Plan will proceed to adoption in January 2006.

**4.2** We have produced our first LDS setting out our project plan for policy development over the next 3 years. All target dates were achieved during the monitoring period.

**4.3** One major issue has been housing. Since receiving the Report of the Panel in January, this enabled us to begin to implement the policy of only providing housing to meet the needs of the locality. We also began work on a Supplementary Planning Document to provide further guidance on the implementation of these new policies and the change in approach. Responses received to the SPD consultation in Autumn 2005 clearly demonstrate the need for a monitoring and enforcement strategy in relation to the housing policies. This will be progressed during the next monitoring period.

**4.4** Undertaking this first Annual Monitoring Report (AMR) has highlighted the inadequacy of some of our in-house systems, which will need to be addressed in 2006 and beyond. In addition, the extent of monitoring required by the AMR has highlighted the extent of resources required to undertake this comprehensively. Systems and procedures will need to be developed and agreed early in 2006, guided by the experience gained in developing this first AMR.

**4.5** A major area of work will be to secure data from external organisations for a range of Indicators in the format needed and at the required time to ensure that the AMR for 2006 is more comprehensive.

**4.6** As this is the first monitoring report, it should be viewed in the context of providing an important evidence base from which to assess future reports. Although the report draws attention to various key issues, care should be taken not to draw detailed conclusions from the indicators at this stage. It is hoped to develop a more detailed assessment of future trends as the evidence base develops.

## 5.0 Policy and plan making monitoring strategy

### 5.1 The need for monitoring in policy and plan making

Monitoring is essential to establish what is happening now, what may happen in the future and to then be able to compare these trends against existing policies and targets to determine what needs to be done. It provides crucial feedback and information on the performance of policy. Under the new planning system, with its focus on delivery of sustainable development and sustainable communities, monitoring takes on an added importance in providing a check on whether those aims are being achieved. Monitoring will also enable us to identify the need to review 'saved' Local Plan policies and future Local Development Documents, and respond to changing priorities and circumstances.

As a National Park Authority, we prepare and publish with partners, a National Park Management Plan which sets out the guiding principles, vision, long-term aims and policies for managing the National Park and its special qualities. Supporting this, the partners prepare a 'State of the Park Report', which measures the state of key elements within the Lake District National Park Management Plan and sets out relevant indicators. ( The list of State of the Park indicators is provided in Annex 1). When changes in the characteristics are highlighted it provides a clear message, which is then taken forward in reviewing policy or actions in the National Park Management Plan. It helps us to monitor changes that may affect the special qualities of the National park in a positive or negative way. It is therefore appropriate to seek out the similarities and linkages between the requirements of both the AMR and the State of the Park Report to ensure that consistent indicators are developed, which can be utilised and monitored for both purposes where possible.

LDF Monitoring: A good Practice Guide, states 'LDF monitoring should adopt a positive, future orientated approach by identifying the key challenges, opportunities and possible ways forward for revising and adjusting spatial planning policies.' and goes on to state 'monitoring is key to the successful development of the evidence base underpinning Local Development Document (LDD) production'.

Two of the key factors that LDDs will be assessed against at independent examination are whether the policies are founded on a robust and credible evidence base, and whether there are clear mechanisms for implementation and monitoring. Monitoring will therefore be integrated into the development and review of all LDDs, including the sustainability appraisal process.

### 5.2 Developing a Monitoring Strategy

Over the last 6 months, we have developed a Monitoring Strategy to enable the development of future comprehensive monitoring approaches, which are within our capacity in terms of staffing, resources, data availability and timescales. In order to facilitate this, we have invested in a new planning applications database to enable the capture of source data in a form that is appropriate to enable effective monitoring.

Our Monitoring Strategy seeks to:

- meet the requirements for AMR content ( see Section 6 );
- report upon a national set of local development framework core output indicators;
- develop local output indicators, contextual indicators and significant effects indicators;
- establish monitoring frameworks over the short, medium and longer term;
- define the linkages between the monitoring requirements of the AMR and the LDNPAs State of the Park report; and

- building upon the above, develop more comprehensive 'spatial' monitoring approaches to policy implementation over the medium to long term.

In the development of monitoring principles and the preparation of an outline of the monitoring strategy, factors considered in the preparation of this and future AMRs and LDDs include:

- Identifying available information to inform the evidence base
- Identification of any data 'gaps' and how these might be addressed; and
- How the authority proposes to develop its monitoring framework, and the content of the annual monitoring report, over time.

Guidance states that it is 'desirable' for this to be agreed with the Regional Planning Board (RPB) and key stakeholders and GONW should be given an opportunity to comment. Whilst the general intention is to engage fully with RPB, key stakeholders and GONW, it has not been possible to do this adequately for the 2005 Report. The monitoring principles and the monitoring framework developed so far are set out in this first Annual Monitoring Report (Dec 2005) and will be submitted to GONW. Following this, and feedback from GONW, subsequent discussions on the suitability of the monitoring framework and principles will be carried out in 2006 with key stakeholders and North West Regional Assembly and refinements accommodated for the Annual Monitoring Report 2006.

### **5.3 Linkages with RSS**

We need to work together with RPB - North West Regional Assembly - to ensure that our respective monitoring frameworks complement each other and avoid duplication. Our AMR must be submitted by December each year. The NWRA's monitoring submission for Regional Spatial Strategy is due at the end of February each year.

Future opportunities for joint working should be explored and timescales developed and agreed to meet the respective AMR submission deadlines.

### **5.4 Policy context**

Future reports will need to show how policy monitoring links to national targets such as Public Service Agreement targets relating to the delivery of sustainable communities, particularly PSA targets 2,4,5,6 and 8 (See page 5 of LDF Monitoring: A Good Practice Guide for details). It will also be necessary to make the linkages with sustainability appraisal and SEA. The integration with other initiatives such as Community Strategies, particularly through the adoption of common targets and indicators where possible and appropriate will need to be developed. As a National Park Authority, we need to ensure that policies in the Management Plan and the Development Plan are complimentary. The Strategy therefore seeks to ensure that close links between monitoring for the State of the Park Report and the LDF are maintained and further developed in a consistent manner.

### **5.5 Best Value / Performance Management Framework**

As a Best Value Authority, under the terms of the Local Government Act 1999, we have a duty to produce an annual Performance Plan which shows continuous improvement in the way we work. The indicators we use to monitor performance include national Best Value Performance Indicators which are supplemented by family indicators agreed by National Parks and our own local indicators.

We are also developing a broader performance management system which will involve a complete review of our local indicators and the creation of balanced score cards.

## 5.6 Risk management

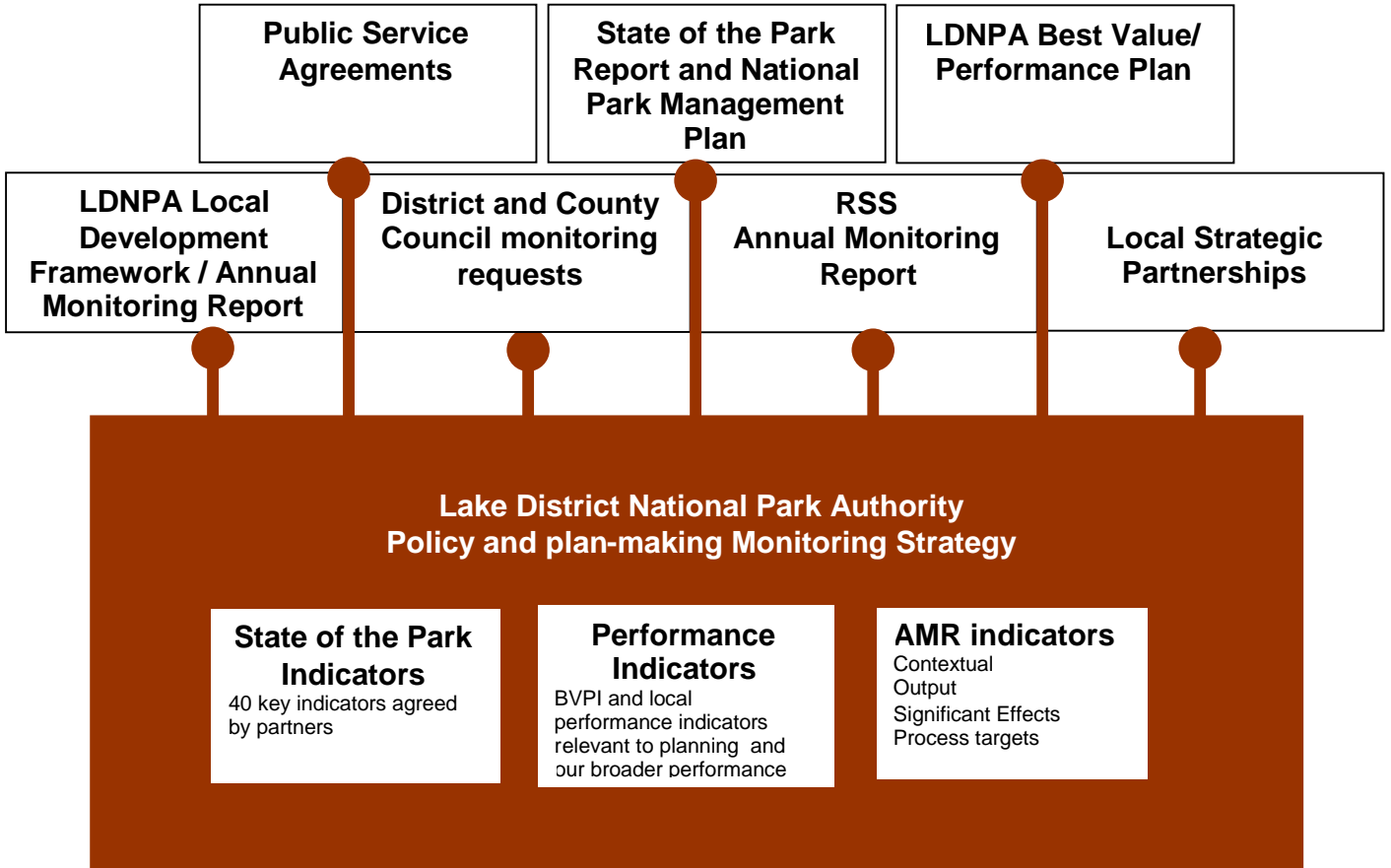
The programme for the delivery of our monitoring strategy is considered challenging but realistic. However, there are risks and mitigation measures in place as follows:

<b>Risk analysis</b>	<b>Mitigation measures</b>
Staff health - all the more pertinent given the small size of the core team preparing the documents	Ensure appropriate workloads and variety of work is provided. Regular monitoring and support from managers and directors.
Use of new monitoring database – the investment we have made in the new database of planning applications needs to be realised within the broader monitoring strategy	Ensure staff are trained and have the processes/resources available to input appropriate information which can be extrapolated for broader monitoring. Ensure the database has continued investment
Funds – financial pressures on the Lake District National Park Authority's budget could affect the resourcing of the programme.	A new three year financial strategy for the Lake District National Park Authority is being developed. The long term commitment to all aspects of the LDF are understood and agreed. However, we need to uplift the resources we allocate to monitoring. We will specifically need to ensure we have resources available for external consultant support if required.
Stakeholder/partner input – some stakeholders /partners have a potential major input into monitoring but there may be other demands on their time. There are also conflicting interests and it will be a challenge to encourage the collation or extrapolation of data for the National Park boundary	We will regularly liaise with our partners. The new State of the Park Partnership Group has shown that joint working is possible. It is however time consuming and staff intensive to make this work and it will be a continuing requirement of the Lake District National Park Authority to lead the partnership.

## 5.7 Overview

Our monitoring strategy is therefore linked to the preparation of many reports or the monitoring of different initiatives and activities, of which the AMR is one part. The following diagram explains the links between our strategy and other documents or initiatives.

## The Lake District National Park Authority Monitoring Strategy



## 6.0 Matters to address within the Annual Monitoring Report

### 6.1 Annual Monitoring Report requirements

We are required to ensure the AMR contains the following information:

I. Whether the timetable and milestones for the preparation of documents set out in the LDS have been met or progress is being made towards meeting them or, where they are not being met or not on track to being achieved, the reasons why
II. Whether policies and related targets in LDDs have been met or progress is being made towards meeting them or, where they are not being met or not on track to being achieved, the reasons why
III. What impact the policies are having in respect of national and regional targets and any other targets identified in LDDs and not covered by (ii) above. Local Planning Regulation 48(7) specifically requires information to be provided on net additional dwellings and LPAs should produce housing trajectories to demonstrate how policies will deliver housing provision in their area.
IV. What significant effects implementation of the policies is having on the social, environmental and economic objectives by which sustainability is defined and whether these effects are as intended
V. Whether the policies in the LDD need adjusting or replacing because they are not working as intended
VI. Whether the policies need changing to reflect changes in national or regional policy
VII. The extent to which any LDO, where adopted, or Simplified Planning zone is achieving its purposes and if not whether it needs adjusting or replacing; and
VIII. If policies or proposals (including the LDO or SPZ scheme) need changing, the actions needed to achieve this.

The AMR presents an analysis, in particular taking account of the core output indicators identified in ODPM's LDFs Core Output Indicators Update 1/2005 and relates these to existing 'saved' policies where possible.

In terms of measuring objectives, targets and indicators, the AMR will require:

- The identification of a clear statement of objectives by which to measure performance
- The identification of relevant output indicators
- Appropriate targets to be set to measure movement towards or away from policy objectives over time. Policy performance should be monitored in terms of performance against sustainability appraisal objectives and targets.
- The use of policy targets to assess whether the LDF is performing as required. If not, the AMR will need to explain why.

### 6.2 Framework of Indicators

Different types of indicators play a specific role in different stages of the plan-making process. A tiered approach (in Table 1 overleaf) reflects the fact that different types are required for specific purposes. Sufficient indicators are needed to ensure a robust assessment of policy implementation. We will avoid developing large numbers of indicators, particularly during the initial stages of developing monitoring frameworks. For LDFs, 3 types of indicators are proposed, together with process targets, as described overleaf:

**Table 1: The different types of indicator within the Annual Monitoring Report**

INDICATOR		NUMBER	PURPOSE/DESCRIPTION	UPDATING TIMEFRAME
Contextual		Small set of highly relevant indicators	Wider social, environmental and economic indicators	Every 5 years
Output	Core Output	As listed in OPDM's 'LDF Core Output Indicators' Update 1/2005	To measure quantifiable physical activities that are directly related to, and are a consequence of, the implementation of planning policies.	Reviewed by ODPM on regular basis. Update annually and report in AMR for 1 Apr to 31 Mar.
	Local Output	3-4 per policy objective		Review on regular basis. Report on each year in AMR for 1 Apr –31 Mar.
	Housing trajectories	See core indicator 2a of OPDM's 'LDF Core Output Indicators' Update 1/2005		Establish through evidence base for LDD production. Update annually and report in AMR
Significant Effects			Identified through Sustainability Appraisal	Report annually in AMR where possible, and whenever SA done for an LDD
Process Targets			Monitor LDS delivery	Report annually in AMR

### 6.3 Contextual Indicators

These indicators describe the wider social, environmental and economic background against which policy operates. They aim to enhance understanding of the wider context for the development of spatial policies. These are limited to the key characteristics and issues of the locality. Indicators are drawn from existing related policy area indicator sets (Sustainability Appraisal, Community Strategies, Best Value Performance indicators, LTPs, LDNP Management Plan etc.)

The AMR presents data for some, but not all of these contextual indicators. Our recent study commissioned by Land Use Consultants and the State of the Park Report provide the key input, and act as a minimal baseline for subsequent updates. There will be a need to draw on the expertise of other organisations such as the Cumbria Economic Intelligence Partnership to assist with the identification of these indicators and provision of data for this and subsequent years. Dialogue will need to take place to secure this assistance and agree suitable timescales for provision of data. In the preparation of the Core Strategy beginning in 2006 this baseline

data will be reviewed and further developed to assist in providing a fuller appreciation of the National Park's key characteristics.

## 6.4 Output indicators

Output indicators assess the performance of policies and inform policy progress and achievement. They are presented on a thematic basis in the AMR.

For the first AMR particular regard is paid to meeting the requirements set out for the Core Output Indicators. Table 2 illustrates which indicators can be met immediately, and what can be met in the short, medium and long term. It also explains the resources required to achieve the target dates specified and sets out the work needed to meet these goals.

We are both the strategic and local planning authority for the National Park. A review of the Cumbria and Lake District Joint Structure Plan has been undertaken with an Examination in Public in Sept/October 2004. The Panel's report was received in January 2005 and subsequent proposed modifications were placed on deposit between September and October this year. This plan is now approaching the adoption stage. Its policies will be 'saved' and will continue to provide the strategic policy framework until RSS is adopted or policies are developed in the Local Development Framework.

The Lake District National Park Local Plan was adopted in 1998. Under the Planning and Compulsory Purchase Act 2004 the policies in the Local Plan are 'saved' until they are progressively replaced by policies in Local Development Documents. The timetable for the production of LDDs is set out in the Local Development Scheme. As future LDDs are prepared and adopted, appropriate local indicators will be set. In the interim period, it is considered impractical to develop a set of indicators for documents that will be superseded therefore the intentions of the key policies in the Joint Structure Plan and Local Plan will be assessed.

The following table highlights the availability of data in the immediate, medium and long term. This forms part of our monitoring strategy.

Theme	Core Output Indicator	Access to information			
		Readily available	Medium term availability	Longer term availability	
Business Development	1a	Amount of land developed for employment by type	✓		
	1b	Amount of floorspace developed for employment by type, in employment or regeneration areas	N/a		
	1c	Amount of floorspace by employment type, which is on previously developed land	✓		
	1d	Employment land supply by type	✓		
	1e	Losses of employment land in (i) employment/regeneration areas and (ii) local authority area	✓		
	1f	Amount of employment land lost to residential development	✓		
Housing	2a	Housing trajectory showing:			
		i) Net additional dwellings over the previous five year period or since the start of the relevant development plan document period, whichever is the longer	✓		
		ii) Net additional dwellings for the current year	✓		
		iii) Projected net additional dwellings up to the end of the relevant development plan document period or over a ten year period from its adoption, whichever is the longer	✓		
		iv) the annual net additional dwelling requirement	✓		
		v) Annual average number of net additional dwellings needed to meet overall housing requirements, having regard to previous years' performance	N/a		

	2b	Percentage of new and converted dwellings on previously developed land	✓		
	2c	Percentage of new dwellings completed at:			
		i) less than 30 dwellings per hectare	✓		
		ii) between 30 and 50 dwellings per hectare	✓		
	2d	Affordable housing completions	✓		
Transport	3a	Amount of completed non-residential development within UCOs A, B and D complying with car-parking standards set out in the local development framework		✓	
	3b	Amount of new residential development within 30 minutes public transport time of: a GP; a hospital; a primary school; a secondary school; areas of employment; and a major retail centre(s)		✓	
Local Services	4a	Amount of completed retail, office and leisure development			✓
	4b	Amount of completed retail, office and leisure development in town centres			✓
	4c	Amount of eligible open spaces managed to Green Flag Award standard		✓	
Minerals	5a	The production of primary land won aggregates (tonnes)	✓		
	5b	The production of secondary/recycled aggregates (tonnes)	✓		
Waste	6a	Capacity of new waste management facilities by type	✓		
	6b	Amount of municipal waste arising, and managed by management type, and the percentage each management type represents of the total waste managed	✓		
Flood Protection and water Quality	7	Number of planning permissions granted contrary to the advice of the Environment Agency on either flood defence or water quality	✓		
Biodiversity	8	Changes in areas and populations of biodiversity importance, including:			
		i) change in priority habitats and species (by type)			✓
		ii) change in areas designated for their intrinsic environmental value including sites of international, national, regional or sub-regional significance		✓	
Renewable Energy	9	Renewable energy capacity (MW) installed by type	✓		

## 6.5 Significant effects indicators

These indicators assess the significant social, environmental and economic effects of policies. They inform monitoring of the impacts of policies on sustainability. They will be linked to the sustainability appraisal objectives and indicators. Monitoring will enable a comparison between predicted effects and actual effects in implementing policy. In identifying the relationship between the LDD Sustainability Appraisal process and the AMR, the AMR is expected to form the basis for monitoring the indicators in Sustainability Appraisals. The situation is, however, a little more complicated as the LDNP Local Plan preceded the new planning regulations that have altered the Sustainability Appraisal process. The Local Plan was not required to establish a set of indicators. Whilst the LUC Report and the SOP Report both provide some useful data, this is an area where indicators will need to evolve over a period of time as future LDDs, particularly the Core Strategy, are prepared and appraised. This will be developed for future AMRs.

## **6.6 Process targets**

These targets monitor the Local Development Scheme delivery via the targets and milestones set out within and assesses the need for any new documents to be introduced. Indication is made of whether the preparation of each document is on, behind or ahead of target. If preparation is behind target then an explanation would need to be given and the need to update the LDS is considered. In 2004/05 all targets have been met therefore this does not need to be considered on this occasion. In future, any timetable for proposed revisions and new documents will be set out. An appropriate assessment is given for the 2005 AMR in Section 10.

## **6.7 Reporting of Indicators**

The following sections detail the indicators which we can accommodate in this first AMR and explains how we intend to secure the data required to measure the various indicators for future AMRs and to develop the evidence bases and the indicators required in the preparation of LDDs.

Reporting of indicators will include a selection of Contextual Indicators followed by Core Output Indicators following the thematic base used in the ODPMs LDF 'Core Output Indicators Update 1/2005'. For each thematic area a brief commentary is given, explaining the policy context currently operating. Progress towards the intentions of Local Plan and Joint Structure Plan policies is explained where possible and this will be replaced by LDF objectives in due course, as LDDs are developed. Progress towards any targets are included. A selection of Local Output Indicators will be developed over time through the preparation of LDDs and will be reported in subsequent AMRs, again, following a thematic base.

All Core Output Indicators are included for completeness, even if data is not yet available for them. The information on additional indicators will be included as and when data becomes available (see Section 8) Indicators will be further refined in subsequent years. Commentary and analysis on progress will develop over time as trends become apparent. The above format will need to be reviewed and become more sophisticated as LDD preparation progresses and the monitoring of contextual indicators and significant effects indicators becomes possible. Over time it will be necessary to be able to address the matters in Section 8 to assess whether policies need amending or replacing (including the 'saved' Local Plan policies).

## 7.0 Contextual indicators : Profile of the National Park

### 7.1 General overview

The Lake District National Park is a living and working landscape of exceptional beauty. Its landscape, wildlife and cultural heritage are of international importance. Covering an area of 2292 sq km it consists of parts of four Districts and has a resident population of just under 42,000 people. The National Park Authority is charged with seeking to foster the economic and social wellbeing of its local communities, conserving and enhancing the natural beauty, wildlife and cultural heritage of the area and promoting opportunities for the understanding and enjoyment of its special qualities. These special qualities and the opportunities within the National Park bring a continuous demand for development, particularly for housing and tourism. The National Park attracts a large number of visitors, who seek to enjoy its special qualities. Agriculture plays a significant role in shaping the landscape and maintaining those qualities that make the area so special for both residents and visitors to enjoy.

The popularity of the National Park brings with it additional pressures through the demand for second and holiday homes and the desires of people seeking to retire to the area. This generates pressures on local housing markets, leading to some local people unable to afford housing within the National Park, and competing with a much larger demand which cannot be met through supply mechanisms which would generate more and more housing in an area which has such a sensitive landscape.

The economic importance of the tourism industry cannot be under estimated as is currently one of the main economic activities in the local economy and the relationship between tourism and the environment and with local communities is a sensitive issue. Agriculture will remain a key aspect of the rural economy but agricultural restructuring is having a profound impact on the industry as a whole. The economy needs to be broadened and strengthened to provide diversity in both the local economic base and job opportunities for local people.

Appropriate Contextual Indicators describing the wider social, environmental and economic background against which policy operates will be created as LDD preparation progresses, and particularly as part of the development of the Core Strategy beginning in 2006.

One considerable problem facing the Authority is the unavailability of data relevant to the National Park. Data needs to be extrapolated according to the national Park boundary and this is often not possible. Much of the data generally available is aggregated for county-wide, District, Parish or Ward boundaries which do not fit neatly with the national Park boundary, making data comparisons difficult or inaccurate. The National Park Authorities are currently lobbying NOMIS in an attempt to get data aggregated for National Parks in the same way as District Authorities to enable the accurate presentation of data sets for individual National Park areas.

The following Table summarises some of the key characteristics, providing a profile of the National Park and compares this with Cumbria, the North Yorkshire Moors National Park and Exmoor National Park. These key characteristics, along with the data extracted from the Socio-economic study by Land Use Consultants (see overleaf) will act as a baseline to inform subsequent updates.

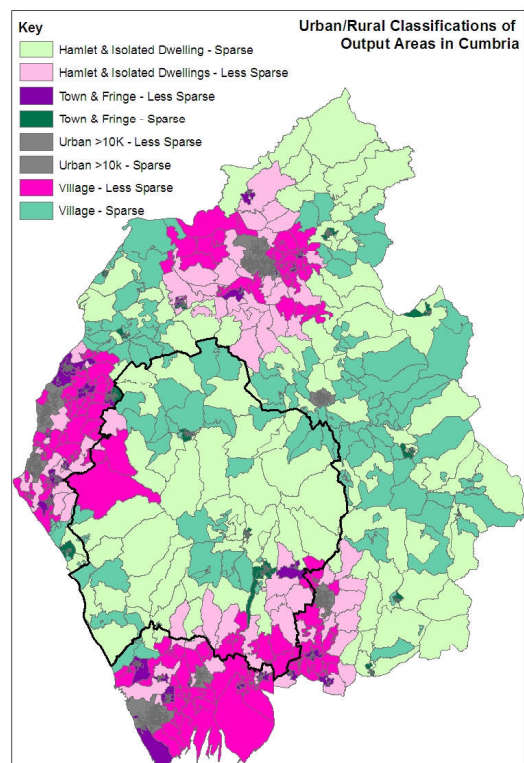
Profile area	Data	Source	Cumbria wide	North York Moors NP	Exmoor NP	
Total National Park area	2292 sq km	<i>OS mapping</i>		1436	692	
<ul style="list-style-type: none"> <li>• South Lakeland</li> <li>• Eden</li> <li>• Allerdale</li> <li>• Copeland</li> </ul>	786 sq km 456 sq km 558 sq km 512 sq km					
National Park Authority Ownership/Management	90 sq km (3.9%)		<i>NPA</i>		n/k	n/k
Resident population 2001	41650		<i>2001 census</i>	487607	23939	10873
<ul style="list-style-type: none"> <li>• Age 0-16</li> <li>• Age 16-64</li> <li>• Age 65+</li> </ul>	6266 (15.04%) 26429 (63.2%) 9076 (21.7%)			91931 (18%) 306346 (62%) 89330 (18%)	4063 (17%) 15057 (63%) 4780 (20%)	1503 (13.9%) 800816-74 (74%) 1362 74+ (12.6%)
Number of settlements with 3000+ population	3			16	0	0
Number of Parishes	80			290	n/k	43
Household spaces	17937	<i>2001 census</i>	209027	10086	5675	
<ul style="list-style-type: none"> <li>• Vacant, 2<sup>nd</sup> home or holiday accommodation</li> <li>• Owner occupied</li> <li>• Shared ownership</li> <li>• Rented</li> <li>• Housing association</li> <li>• Local Authority</li> </ul>	5064 (28%) 12114 121 3539 (19%) 1250 (7%) 913 (5%)		8% 71% 11% 7% 9%	12% 73% 13% 3% 5%	n/k 68.2% 1018 n/k n/k 1.14%	
Economically active population	31286			354183	15000	
<ul style="list-style-type: none"> <li>• Unemployment</li> </ul>	1.9%		<i>2001 census</i>	1.9%	1.5%	2.8%
Moorland	104979 ha		<i>MLC</i>	n/k	49900	n/k
Woodland	28931ha			n/k	31850	n/k
Farmland	76815 ha	n/k		57300	n/k	
SSSIs	41947 ha	<i>NPA GIS</i>	9114	47097	n/k	
NNRs	1200 ha		6243	169	n/k	
LNRs	410 ha		70	1012	n/k	
Special Areas of Conservation Special Protection Areas, Ramsar Sites	36037 ha		71160	n/k	n/k	
ESA designation	216403 ha	<i>DEFRA</i>	28313	n/k	n/k	
ESA agreements	160211 ha			n/k	n/k	
Coastline	80km	<i>NPA GIS</i>	n/k	42	n/k	
Walls and banks	4730km	<i>MLC</i>	n/k	2041	n/k	
Hedgerows	3443 km	<i>MLC</i>	n/k	2554	n/k	
Watercourses	9158 km	<i>NPA GIS</i>	n/k	4272	n/k	
Scheduled ancient monuments	275	<i>NPA</i>				

Profile area	Data	Source	Cumbria wide	North York Moors NP	Exmoor NP
Public footpaths	2133km	<i>Defin. Map</i>		1506	438
Public Bridleways	844km			749	464
Other PROWs	33 km	<i>NPA</i>		14	64
Land open for public access	46%	<i>NPA</i>		n/k	n/k
Visitor days	22 million			8.6 million	n/k
Number planning applications (04/05)	1526	<i>NPA</i>		769 (02/03)	n/k
Number of Authority members	26	<i>NPA</i>		26	n/k

In October 2004 we commissioned Land Use Consultants to prepare a social and economic profile of the Lake District National Park. The full report is available from [www.lake-district.gov.uk](http://www.lake-district.gov.uk) however some of the key elements of the study and diagrams are included below. Land use Consultants utilised post code information where this was available to provide a proportional weighting of the data to secure a closer 'fit' to the national park boundary and give more accurate data for the national park as a whole. This work has provided us with a methodology to enable us to monitor this data more accurately in future.

## 7.2 Urban / Rural Classification

The classification is mapped by Output Area (see map). This shows that most of the National Park falls under the sparse side of the classification. Most of the National Park is classified as either hamlet and isolated dwelling or village. The various proportions of this distribution are shown in Table 3 overleaf and are compared with the rest of Cumbria.



**Table 3 : Percentage Output Areas In Each Rural/Urban Classification**

Definition	LDNP	Rest of Cumbria
Hamlet and Isolated Dwellings - Sparse	22.2	5.0
Village - Sparse	25.1	7.2
Town and Fringe - Sparse	25.1	4.8
Urban > 10k - Sparse	0.0	3.3
Hamlet and Isolated Dwellings - Less Sparse	10.6	4.4
Village - Less Sparse	12.1	11.3
Town and Fringe - Less Sparse	3.9	15.2
Urban > 10k - Less Sparse	1.0	48.8
Total Output Areas	100	100

Source: ODPM

### 7.3 Detailed Population analysis for the National Park

Total no.	Under 16	16-19	20-29	30-59	60-74	75 or more
41650	6266	1759	3983	17684	7830	4128
Percentage	51.04	4.22	9.56	42.46	18.80	9.91
Gender	Male	48.65	Female	51.34		

Source: Census 2001

Census data shows that the population of the National Park has proportionately fewer children under the age of 16 than elsewhere in Cumbria (15.04% in the national Park, 19.21% in the rest of Cumbria) and slightly less people of working age. The proportion of the population over 60 is greater than for Cumbria (18.80% in the National Park, 15.28% in the rest of Cumbria) with far greater representation in the National Park for people from aged 75 (9.91% in the National Park compared with 8.38% in the rest of Cumbria).

### 7.4 Household composition analysis for the National Park

Total households	One person	Couples	Couples no children	Couples with children	Lone parents	Other	Pensioners
39513	5394	23220	7780	15440	2637	3656	4602
Percentage	13.65	58.77	33.51	66.49	6.67	9.25	11.65

Source: Census 2001

Compared with the rest of Cumbria, the National Park contains more one person households (which include retired people), particularly in the towns, slightly fewer couples but significantly more couples without children. There are fewer lone parent households, and more people of pensionable age.

### 7.5 Economically active people in employment categories

Unemployment in the National Park is noticeably lower than in the rest of Cumbria. Self employment is considerably higher, particularly in the countryside (which ties in with a high incidence of homeworking). In consequence the proportion of full and part-time employees is reduced.

Total no.	Employees part time	Employees full time	Self employed	Unemployed	Full time student
31286	3668	10075	6132	619	807
Percentage	11.72	32.20	19.60	1.98	2.58

Source: Census 2001

## 7.6 Industry of Employment – Resident employment

Agriculture, hunting and forestry have relatively high levels of representation in resident employment in the National Park compared with elsewhere. Other important features are the strength of employment in hotels and restaurants in the National Park.

Employment Type	Number	%
<b>Total</b>	20592	20592
Agriculture, Hunting & Forestry	1566	7.60
Fishing	15	0.07
Mining & Quarrying	102	0.50
Manufacturing	1916	9.30
Electricity, Gas & Water Supply	110	0.53
Construction	1319	6.41
Wholesale/Retail Trade, Repair, etc	3203	15.55
Hotels & Restaurants	4336	21.06
Transport, Storage & Communications	783	3.80
Financial Intermediation	302	1.47
Real Estate, Renting & Business Activities	1731	8.41
Public Admin/Defence/Social Security	644	3.13
Education	1666	8.09
Health and Social Work	1586	7.70
Other	1313	6.38

Source: Census 2001

## 7.7 Travel to work

The Census includes data for travel to work and homeworking. In the National Park homeworking is a strong economic characteristic. The rate of homeworking is particularly high at over 22%, increasing to 25% in the rural parts of the National Park. This is double the rate of homeworking in the rest of Cumbria.

The Report by Land Use Consultants shows that the dominant mode of travel to work is by car. Bus travel is particularly weak and it is noticeable that car sharing is low. In the towns the proportion of people walking to work is nearly three times greater than in the rest of the national Park, and double the rate for the rest of Cumbria. Overall, homeworking and walking to work account for over 40% of employees in the National Park.

Total	Work mainly from home	Underground Metro Light Train Tram	Train	Bus Minibus Coach	Motor-Cycle Scooter Moped	Driving car Van	Passenger in car/van	Taxi Mini cab	Bicycle	On foot	Other
<b>20564</b>	4610	24	120	276	128	9934	959	73	428	3739	227
<b>Percentage</b>	22.42	0.12	0.58	1.34	0.62	48.31	4.66	0.35	2.08	18.43	1.1

## 8.0 Output indicators:

### 8.1 Transport

**Transport** – We will promote the development and use of sustainable travel choices and reduce the adverse impacts of motor traffic on people, the environment and landscape character.

<b>Type of Indicator: 3a No/Ref:</b>	<b>Indicator: Amount of completed non-residential development within UCOs A, B and D complying with car parking standards set out in the local development framework</b>
Data Source:	LDNPA Planning Application database
Spatial Scale Measured:	National Park wide
<b>Objective/Commentary:</b>	
Policy T9 of RPG and Policy RT6 of the draft RSS requires local authorities to develop maximum parking standards for destinations in accord with regionally specified ceilings. Policy T32 of the emerging Joint Structure Plan seeks to establish this standard in a consistent manner with neighbouring authorities. Further assessment of this policy will be conducted through the LDF.	
<b>Indicator Measure</b>	
Where Set:	RPG Policy T9; draft RSS Policy RT6
<b>Analysis/Policy Assessment:</b>	
<b>Future Actions/Comments:</b>	
The information needed to support this indicator is not currently available, but mechanisms have been put in place through our Development Control Planning Applications database (Swift) to facilitate the capture of this data in the future. It will be available for the next AMR. Compliance will be measured against the standards set out in the policies of the emerging Joint Structure Plan.	

<b>Type of Indicator: 3b No/Ref:</b>	<b>Indicator: Amount of new residential development within 30 minutes public transport time of: a GP; a hospital; a primary school; a secondary school; areas of employment</b>
Data Source:	LDNPA Planning Application database
Spatial Scale Measured:	National Park wide
<b>Objective/Commentary:</b>	
The emerging Joint Structure Plan Policy ST1 seeks to sustain both urban and rural communities through a series of measures. <i>'Good transport services and communications linking people to jobs, schools, health and other services'</i> is one of the criteria which provides a link with this indicator and will help to establish information to assess the effectiveness of our policy to provide for sustainable development.	
<b>Future Actions/Comments:</b>	
Information not available at present. Discussions have taken place with Capita, (external business agents) who may be able to provide us with the information in the future. We will investigate this further in partnership with the other Districts in 2006. Within the LDNPA, the GIS Developer is currently exploring the possibility of purchasing additional computer software to work alongside our planning applications database, which may provide this information in the future. The information should therefore be available for the next AMR, but will be subject to resources available at the time. In addition to this, a contract to collect valuable information on service provision was commenced but was halted by the outbreak of the Foot and Mouth disease in 2001. In the Summer of 2005 a pilot exercise was conducted by the LDNPA Volunteers Service to survey the service provision in settlements within the LDNP. This proved successful and will be roll out more comprehensively during 2006.	

## 8.2 Flood Protection and Water

**Flood Protection and Water** – We will resist development in areas at risk from flooding unless appropriate and acceptable flood prevention measures can be implemented as part of the development. New development should be limited to where adequate water supply already exists or where the provision of water resources can be made without adversely affecting river flows, water quality, amenity and nature conservation interests.

<b>Type of Indicator: 7 No/Ref:</b>	<b>Indicator: Number of planning permissions granted contrary to the advice of the Environment Agency on grounds of flood defence or water quality.</b>		
Data Source:	Environment Agency Planning Application Data		
Spatial Scale Measured:	National Park wide		
<b>Objective/Commentary:</b>			
Policy ST3 of the emerging Joint Structure Plan identifies the need to reduce the risk of flooding within new development by a series of criteria. This will be explored further through the production of the LDF.			
<p>Data not available. The table to the right list applications the Environment Agency objected to planning applications on flood risk grounds 2004/05 in the Lake District National Park. The table shows the application reference, description and reason for objection. FRA - Flood risk Assessment. No comparison has yet to be undertaken as to how many of these were granted contrary to EA advice.</p> <p>Source: Environment Agency, 2005</p>	7/04/2075	Other - Minor	PPG25/TAN15 - Request for FRA
	7/04/2149	Agriculture - Minor	PPG25/TAN15 - Request for FRA
	7/04/2232	Residential - Minor	PPG25/TAN15 - Request for FRA
	7/04/2300	Recreational Schemes - Minor	PPG25/TAN15 - Request for FRA
	7/04/2361	Residential - Minor	PPG25/TAN15 - Request for FRA
	7/04/2409	Other - Major	PPG25/TAN15 - Request for FRA
	7/04/3098	Residential - Minor	PPG25/TAN15 - Request for FRA
	7/04/3114	Recreational Schemes - Minor	PPG25/TAN15 - Request for FRA
	7/04/4041	Mixed Use - Minor	PPG25/TAN15 - Request for FRA
	7/04/4055	Recreational Schemes - Minor	PPG25/TAN15 - Request for FRA
	7/04/4067	Recreational Schemes - Minor	PPG25/TAN15 - Request for FRA
	7/04/4117	Other - Minor	PPG25/TAN15 - Request for FRA
	7/04/5214	Residential - Minor	PPG25/TAN15 - Request for FRA
	7/04/5423	Residential - Minor	PPG25/TAN15 - Request for FRA
	7/04/5424	Residential - Minor	PPG25/TAN15 - Request for FRA
	7/04/5468	Residential - Minor	PPG25/TAN15 - Request for FRA
	7/04/5496	Residential - Minor	PPG25/TAN15 - Request for FRA
	7/04/5576	Recreational Schemes - Minor	PPG25/TAN15 - Request for FRA
	7/04/5607	Recreational Schemes - Minor	Loss/Restricted Access to Watercourse PPG25/TAN15 - Request for FRA
	7/04/5717	Residential - Minor	PPG25/TAN15 - Request for FRA
	7/04/5729	Residential - Minor	PPG25/TAN15 - Request for FRA
	7/04/5868	Residential - Minor	PPG25/TAN15 - Request for FRA
	7/05/2033	Residential - Minor	PPG25/TAN15 - Request for FRA
	7/05/4009	Residential - Minor	PPG25/TAN15 - Request for FRA
	7/05/5020	Residential - Minor	PPG25/TAN15 - Request for FRA
	7/05/5031	Residential - Minor	PPG25/TAN15 - Request for FRA
7/05/5036	Agriculture - Minor	PPG25/TAN15 - Request for FRA	
7/05/5062	Other - Minor	PPG25/TAN15 - Request for FRA	
<b>Future Actions/Comments:</b>			
We will liaise with our Development Control Officers to examine ways in which this data can be captured through our planning applications database, so that this information can be provided internally. We will continue to work with the Environment Agency to provide comprehensive data.			

### 8.3 Biodiversity

**Biodiversity** – The Lake District is rich in wildlife and geological features. There are over 100 SSSI's covering nearly one fifth of the National Park. The international wildlife importance of over 40 of these sites is further recognised by additional designation as Natura 2000 sites. There are also three Ramsar, eight National Nature Reserves and two Local Nature Reserves designations and various species of European Importance. We will manage all of these species, habitats and geological features sustainably.

<b>Type of Indicator: 8 No/Ref:</b>	<b>Indicator: Change in areas and populations of biodiversity importance, including: (i) change in priority habitats and species (by type) (ii) change in areas designated for their intrinsic environmental value including sites of international, national, regional or sub regional or local significance.</b>
Spatial Scale Measured:	National Park wide
Linkage with other strategy/plan:	Lake District National Park Management Plan Policy NC15 The Lake District Still Waters Partnership Cumbria Biodiversity Action Plan High Brown Fritillary Action Group Flora in the Fells
<b>Objective/Commentary:</b>	
The LDNPA is actively involved in many partnership groups to establish ways of researching and managing the range of important habitats and environmental assets throughout the area. The emerging Structure Plan reinforces the need to afford the highest level of protection of areas and features designated as being of national or international conservation importance. Development and other land use changes in these areas or within their settings that are detrimental to their characteristics will not be permitted unless there are exceptional circumstances to dictate otherwise.	
<b>Future Actions/Comments:</b>	
During the assessment of a planning application, any proposal, which falls within an environmental area or feature held as a dataset on our GIS software, will alert the Development Control Officer. Any subsequent changes in areas and populations of biodiversity importance as a result of an application approval are not currently monitored sufficiently. Investigations have taken place internally to explore the ways and means of gathering this information. In an area as diverse and environmentally rich as the LDNP this indicator is presenting us with difficulties this time. It is a mammoth task! Our Ecologist is in the process of sourcing a comprehensive list of priority species and habitats (criterion i), which will be added to our planning applications database in the Spring as a constraints layer to provide us with some baseline data. We are examining ways in which change can be monitored either manually or through planning approvals in the future.	

### 8.4 Renewable Energy

**Renewable Energy** – Small scale renewable energy developments particularly those which are domestic/community based and are developed on a local scale will be positively encouraged provided that they can be assimilated into the area and would not have an adverse impact on local interests.

<b>Type of Indicator: 9 No/Ref:</b>	<b>Indicator: Renewable Energy capacity (MW) installed by type</b>
Other Indicator Refs:	
Data Source:	LDNPA Planning Applications database
Spatial Scale Measured:	National Park wide

**Objective/Commentary:**

During the development of the emerging Joint Structure Plan, a comprehensive assessment of renewable energy potential in the County was undertaken by AXIS Planning Consultants to inform the policies.

**Indicator Measure**

Actual Target (if any):	443 MW for Cumbria to 2015
Where Set:	Provisional target set in the Interim draft revisions to RSS

**Analysis/Policy Assessment:**

RSS is seeking to increase the Renewable Energy Targets for Cumbria. This is higher than that figure set out in the partial review of the Regional Planning Guidance. The LDNPA is seeking to request a new capacity study to be undertaken in line with the one done for the JSP, to establish uniform research methodology and to inform the emerging figures of the RSS.

**Illustrations, charts, etc:**

7/1998/2251	Installation of 6 sq m (surface area) of solar collectors to rear inclined roof surface involving no structural alteration and not increasing volume of property	Whelpo House, Caldbeck	Listed Building Consent to Alter/Extend	11-Jan-1999	Granted
7/1999/4074	Conversion of redundant mill to single dwelling, new turbine house, new septic tank and pump chamber, new semi-underground garage	Whitbeck Mill, Whitbeck, Millom	Dwellings Minor	03-Dec-1999	Granted
7/1999/5584	To erect a 2.5 kw wind turbine	Barnscar Fold, Ayside	All Other Developments Minor	10-May-2001	Refused
7/2001/4058	Small scale hydro electric scheme to provide electricity to the youth hostel and camping barn	High Gillerthwaite, Ennerdale	All Other Developments Minor	11-Sep-2001	Granted
7/2001/5223	Installation of roof mounted solar panels	No 2 Orchard Cottages, Witherslack	Householders Development	02-Jul-2001	Granted
7/2001/5536	Sluice gates for hydro electric scheme	Backbarrow Weir, Backbarrow	All Other Developments Minor	15-May-2002	Granted
7/2003/3118	27 wind turbine generators	Whinash, Bretherdale and Roundthwaite Commons, Borrowdale, Tebay	All Other Developments Major	05-Jan-2004	Refused
7/2003/5286	Hydro Electric Scheme, Dam, Pipeline and Power House	Church Beck, Coniston	All Other Developments Minor	07-Aug-2003	Granted
7/2003/5513	The installation of three 1.3m sq solar collectors, positioned on the front inclined roof surface of the property	3 Grassgarth Cottages, Grassgarth Lane, Ings	Not Required on PS1 / PS2 Reports	04-Nov-2003	Withdrawn / Called In / Turned Away
7/2004/2143	Installation of four 1.3m sq surface area solar collectors on the south west facing roof incline	48 Lakeland Park, Keswick	Householders Development	09-Jun-2004	Granted
7/2004/2264	Install a micro hydro power generator on Barrow Beck utilising the existing weir and constructing a small brick turbine housing and associated pipework	Barrow Beck, adjacent Barrow House, Borrowdale	All Other Developments Minor	24-Jun-2005	Granted
7/2004/5840	Solar panels	Nether Close, Underbarrow	Not Otherwise Included	20-Dec-2004	Granted
7/2005/2131	Installation of solar panels on south facing roof	Margaret Brow, Grange, Keswick, CA12 5UQ	Listed Building Consent to Alter/Extend	21-Jul-2005	Granted
7/2005/4003	Small hydro electric scheme to provide power for Low Gillerthwaite Field Centre, requires one new single storey building to house turbine and generating plant	Adjacent to Forestry Buildings, High Gillerthwaite, Ennerdale	All Other Developments Minor	25-Jul-2005	Withdrawn / Called In / Turned Away
7/2005/4063	Small hydro electric scheme to provide power for the field centre, requires one new single storey building	High Gillerthwaite, Ennerdale, Cleator, CA23 3AX	All Other Developments Minor	19-Sep-2005	Granted
7/2005/5199	First floor extension over existing single storey extension to rear, solar panel and entrance canopy to front	3 Brow Edge, Backbarrow	Householders Development	12-Jul-2005	Granted
7/2005/5531	Provision of a bathroom, heating, erection of a wind turbine, photovoltaic cells and a solar twin water heater. New septic tank and soakaway	Rose Castle Cottage, Tarn Hows, Coniston, Cumbria, LA22 0PT	Householders Development	09-Dec-2005	Refused

**Future Actions/Comments:**

We can currently provide a list of all renewables applications by type (see above). However we are unable to provide the MW of installed capacity because we have failed to monitor the status of these applications consistently. The MW for each application will be included on Swift from now on and we will investigate ways to monitor when proposals are installed and available for operation with our Enforcement team, who currently monitor the completion of other developments. The data should therefore be readily available for the next AMR.

**8.5 Housing**

**Housing:** The provision of affordable housing is a key objective of both the National Park's Development Plan and its Management Plan. In the past few years the Authority has become more pro-active in its approach, not merely relying on a having an affordable housing policy but also seeking to ensure that it delivers more affordable homes. To this end the Authority is now a key partner in numerous groups looking at these issues. These include the Cumbria Sub-Regional Housing Strategy (CSRHG) Partnership and its Data Collection and Affordable Housing Sub-groups, South Lakeland Local Strategic Partnership (LSP) Affordable Housing Sub-group, serving as the planning advisor to Cumbria Rural Housing Trust (Cumbria's rural housing enabler) and until recently the Cumbria Strategic Partnership (CSP) Affordable Housing Sub-group. The role of this group is now being reconsidered in light of the emerging CSRHG. These groups tend to focus on policy and its implementation. The Authority is also involved in the Housing Provision Advisory Group (South Lakes), which focuses more on the development control side of things, in particular monitoring affordable housing sites progress.

We are also working directly with Parish Council and Parish Plan groups to identify and quantify housing needs. After a need has been established, then this partnership work can hopefully progress to the identification of sites for affordable housing, either for allocation in the LDF or progressing as an exception site. We have recently consulted on a draft Supplementary Planning Document on Demonstrating Housing Needs which outlines the process we suggest should be followed to work through identifying the housing need, considering how best this can be met, selecting a site and then considering how the occupancy and price of any houses would be controlled in perpetuity.

<b>Type of Indicator: CORE No/Ref: 2d</b>	<b>Indicator: Affordable Housing Completions</b>
Data Source:	Housing Strategy Statistical Appendix 2005
Spatial Scale Measured:	Currently part of District within the National Park (although currently only partial data is available)
Linkage with other strategy/plan:	Cumbria Sub-Regional Housing Strategy, Lake District Management Plan Policies SC1, SC2, SC3, SC5, SC8 and SC9 Emerging Structure Plan Policies ST12, H20, H21 and H22 The CSP and LSP community strategies, including action plans

**Objective/Commentary:**

Policy H20 of the emerging JSP seeks to ensure any new housing in the Lake District National Park meets local housing needs. This means that no new housing will be provided to meet any demand for second homes, holiday homes, commuter homes or retirement homes. It removes any notion of meeting demand from our housing policies and replaces it with a notion of meeting housing need.

The issue of definitions in relation to affordable and local needs housing was one area that was specifically considered at the Examination in Public of the Structure Plan in September 2004. We use the term 'housing needs of the locality', rather than just 'affordable needs' in recognition that low, average, and even middle-income earners, are having difficulties accessing housing to rent or buy in the National Park. Each of these groups needs to be helped in different ways if we are to ensure our communities are genuinely sustainable.

The Lake District National Park Authority consider that to be in housing need, a household must be:

- a) Inadequately housed AND
- b) Unable to afford to rent and/or buy on the open market AND
- c) Have a need to live in the locality

The emerging JSP policies are a material consideration on making planning decisions. As the policies progress through their statutory processes the amount of weight that can be given to them as material considerations increases. We received in Panel's report on the Examination in Public in Dec 04. At that stage we decided that the emerging policies, combined with changes to national and regional guidance now offered enough material considerations to allow us to ensure any new permissions complied with the new policies of only meeting local needs housing. These policies therefore began to bite and since January 2005 all of the permissions granted will be affordable (defined as social and intermediate) housing. They may be occasions where extant permissions or other factors require a more flexible definition of local needs, than indicated in the SPD. There will also be a delay between when this policy started to impact on decisions (since Jan 2005) and when it will impact on completions.

**Indicator Measure**

Actual Achieved Measure:	21 affordable (RSL or similar) completions in SLDC area
--------------------------	---

**Analysis/Policy Assessment:**

As part of the responses to the SPD a full monitoring and enforcement framework is needed. This will be produced in the next year. Work is also being undertaken by the CSRHG and their subgroups and the CSP, LSPs and their subgroups to also develop indicators on the wider housing issues. These will include those required by draft PPS3 and its balanced housing market assessments. We will also need to look at how we capture information relating to affordability, and the range of mechanisms to control occupancy and price we use in the Development Control Planning Applications Database (Swift). This will enable us not only to measure how many units of affordable housing have been permitted and completed but also break this figure down into the different sub-groups of affordable housing types for example, shared equity, shared ownership, rented housing provided by an RSL, rented housing provided by a charitable trust, self build schemes with price and occupancy controls, housing co-ops and so on.

At present however, to gather this information requires a manual trawl through the housing completions records. This has been done for completions in the part of the National Park that is also in South Lakeland, as it was required to inform SLDC's Housing Strategy Statistical Appendix 2005. The same request has not been received from the other districts whose area includes part of the National Park, so this work has not been done. In future years our Development Control Planning Applications Database (Swift) should allow easier retrieval of this information, but a wholesale review of how the data is classified is needed first.

**Review of saved policies/LDDs:**

It is really too early to assess the impacts of this new tighter policy approach.

**Future Actions/Comments:**

As we have said the effect of the new policies will be closely monitored. We now need to take the time to ensure we have the correct systems in place to capture all of the data we need. This work will be undertaken in 2006.

## 8.6 Housing Trajectory

**Housing Trajectory:** The issue of providing affordable housing is one that we have struggled with for many years. Our policies and the kind of developments we want to encourage i.e. only housing to meet an identified local need, make it difficult to directly translate the housing trajectory indicators to our specific circumstances. The policy context has also changed considerably over recent years and we have sought ensure all housing is restricted to only meeting local needs through changes to the Structure Plan policies. The Structure Plan should be finally adopted in early 2006 but in light of the conflict between development plan policies and the emerging Structure Plan policies, the Panel's Report and revised national and regional guidance and policies in this area, the changing policy context has already impacted on development control decisions.

<b>Type of Indicator: CORE</b> <b>No/Ref: 2a (i) (ii) (ii) (iv) (iv)</b>	<b>"Indicator: Housing Trajectory showing:</b> <b>(i) net additional dwellings over the previous five year period or since the start of the relevant development plan document period, whichever is the longer</b> <b>(ii) net additional dwellings for the current year</b> <b>(iii) projected net additional dwellings up to the end of the relevant development plan period or over a ten year period from its adoption, whichever is the longer</b> <b>(iv) the annual net additional dwelling requirement</b> <b>(v) annual average number of net additional dwellings needed to meet overall housing requirements, having regard to previous years' performances</b>
<b>Data Source:</b>	Housing Land Availability and Site Monitoring Records
<b>Spatial Scale Measured:</b>	National Park Wide
<b>Linkage with other strategy/plan:</b>	Cumbria Sub-Regional Housing Strategy Monitoring Framework (currently in development) Lake District National Park Management Plan Policy SC3
<b>Objective/Commentary:</b>	
<p>The emerging Structure Plan continues the principles of the existing structure plan that the Lake District National Park Authority should only be looking to accommodate those with a need to live in the area. The Local Plan policies restricted any open market housing to only infill plots within the larger settlements, and the emerging Structure Plan sought to extend these restrictions to all new developments including infill plots. The LDS acknowledges that the housing policies are a key priority for review, and the new LDF on housing will provide the opportunity to set out all the different aspects of these new and emerging policies relating to housing nationally, regionally and locally, all in one place.</p> <p>In the interim the emerging Structure Plan policies have been given significant weight as a material planning consideration for development control. The weight that could be given to them increased as the policies went through their due process. On receipt of the Panel Report just before Christmas 2004 a judgement was made that because the housing policies had received full endorsement from the Panel, and the joint authorities concurred with the panel's view the weight that could be given to them was judged to be very significant, and combined with changing regional and national guidance, significant weight has been given to the polices since January 2004. This means that prior to January permissions for open market housing could have been permitted, but since January 2054, all applications for housing would need to illustrate how they contributed to meeting the housing needs of the locality in line with policy H20 of the emerging Structure Plan.</p> <p>A Supplementary Planning Document on Demonstrating Housing Needs has now been prepared and consulted on to explain how these policies are anticipated to work in practice. Much of this work could potentially be taken forward to inform the LDF.</p> <p>For monitoring purposes therefore a pre-Jan 2005 and a post-Jan 2005 policy approach may need to be applied. Clearly there is also a time lag as some potentially unfettered units permitted pre-Jan 2005 make their way through the system to become completions.</p>	

**Indicator Measure**

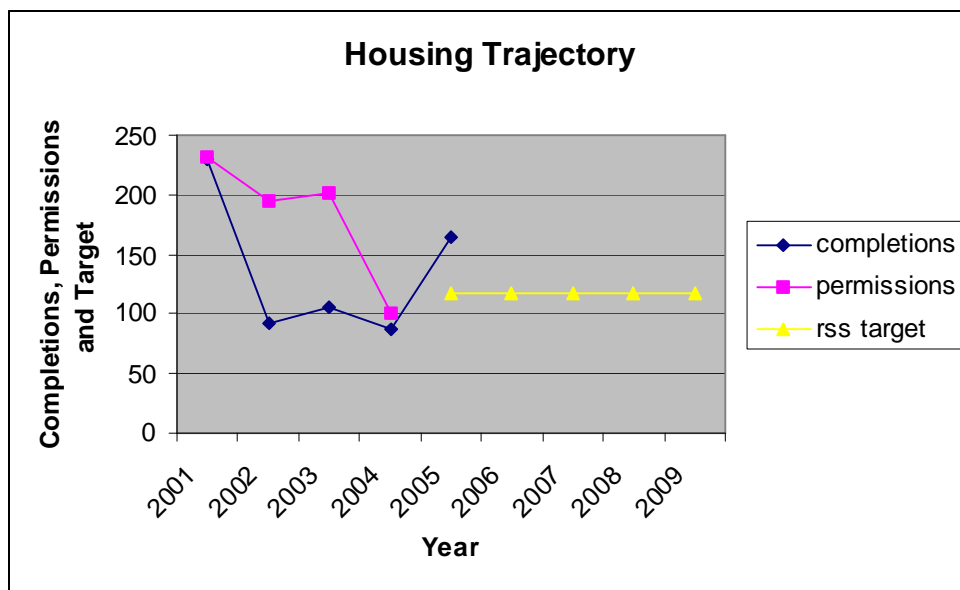
Actual Target (if any):	The LDNPA has not historically had a specific target for housing permissions/completions. Instead it was accepted that any permissions/completions would come off (or be added to) the district totals. When the targets were floor targets this caused the districts no difficulty. However RPG13 changed them to ceiling targets and introduced a policy of restraint on housing numbers across Cumbria. This made the old way of accounting for new permission in the National Park untenable. Coupled to this was the increasing importance of monitoring and local planning authorities new ability to allocate sites solely for affordable housing. It now makes sense for us to have an annual housing target, as long as this is still restricted to only meeting local needs. Initial indications are that the new RSS, which is now responsible to dividing down the housing numbers to a local planning authority area, will include a target for the National Park, with the safeguards we require. The target suggested in draft RSS was an annualised figure of 117 units. We will therefore be looking to monitor and manage our permissions and completions in line with targets in the RSS once they have been finalised. It currently remains unclear to us, if the new targets are floor or ceilings (as for the National Park they pertain only to affordable housing- social rented and intermediate), and if they will relate to permissions or completions. The current expression 'rate' offers little guidance on this. We will have to be guided by the final RSS on these points.
Where Set:	RSS see above (previously Structure Plan, although no specific target was set).
Actual Achieved Measure:	See graph below

**Analysis/Policy Assessment:**

Two significant changes have therefore occurred in this monitoring period. The first is the progress of the emerging Structure Plan. This uses a 'permissions based' approach to housing numbers (rather than a completions approach) and also sets no target for housing in the National Park. The emerging Structure Plan also breaks the link between the National Park figures and the Districts. The second issue relates to the transitional arrangements relating to moving into the new planning system and specifically the developing regional work. Since the end of the monitoring period more information has been provided in relation to the RSS, including indicative allocation figures. Although clearly these have yet to be finally agreed and adopted.

In terms of monitoring and targets therefore, there is a potential for conflict between the different approaches. The Structure Plan was written to cover the period of 2002-2016, and RSS will cover the period of 2003- 2021. It remains unclear how monitoring of permission and completions can be compared with targets applied retrospectively. The potential conflict between these approaches and their likely impacts on monitoring is something we will need to consider and resolve next year.

Therefore in terms of the housing trajectory we are able to show permissions granted and completions over the past five years. Both of these figures relate to net additional dwellings. We are also able to show the anticipated target for housing provision as currently set out in the RSS, assuming it is adopted on schedule. Although we remain unclear about how the targets will work retrospectively, and if and how the housing trajectory should deal with this issue. What we cannot however do is use the completions and permissions data to predict how housing numbers will be managed to hit the housing targets. This is because at present not only is the target indicative but also the policy context has changed considerably in that we will no longer be permitting unfettered housing on infill plots.



**Review of saved policies/LDDs:**

See above.

**Future Actions/Comments:**

The LDF will set out the policy framework for housing policies. Once this has been established a full set of local indicators can be compiled. One of the emerging themes from the SPD consultation responses and the Panel Report for the Examination in Public into the emerging Structure Plan was the importance of developing a monitoring and enforcement policy for our housing policies and in particular our local occupancy conditions. In response to these concerns a full monitoring framework will be established to feed into the next AMR building on our new policy requirements and new Development Control Planning Applications Database (Swift) capabilities.

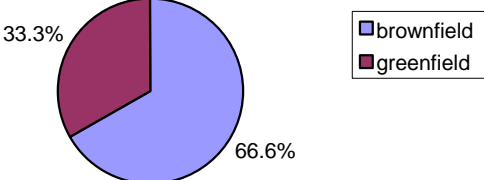
**8.7 Housing: Previously Developed Land**

**Housing Previously Developed Land:** The effective and efficient use of land is a key government objective. It is key to the government sustainability agenda, which includes prudent use of resources and effective protection of the natural environment.

<b>Type of Indicator: CORE No/Ref: 2b</b>	<b>Indicator: Percentage of new and converted dwellings on previously developed land.</b>
Other Indicator Refs:	Best Value Performance Indicator 106-Percentage of new homes built on previously developed land. Target 60%.
Data Source:	Housing Land Monitoring
Spatial Scale Measured:	Park Wide (although data could be presented at a part of district within the park level)
Linkage with other strategy/plan:	Emerging Regional Spatial Strategy policy table 9.1 sets of target figures for the percentage of brownfield land per planning authority. Emerging Joint Structure Plan policy ST3: Principles applying to all new development, which sets out the search sequence for all development that prioritises suitably located brownfield land over greenfield. Also JSP policy H18: Targets for recycling of land and buildings.

**Objective/Commentary:**

The objective of re-using brownfield land is enshrined in government guidance and policy. By reusing brownfield land, the need to build on greenfield land can be reduced. The Lake District National Park Authority has been successful in achieving the 60% targets over the last few years, but because there will be a finite amount of brownfield land and buildings suitable for redevelopment, it is anticipated that the percentage of brownfield being developed will decrease, as many of the brownfield opportunities have already been utilised.

Indicator Measure							
Actual Target (if any):	40%, 50% or 60% depending on which document you are looking at.						
Where Set:	Draft PPS3 paragraph 18 states that by 2008 at least 60% of additional housing should be provided on brownfield land. The emerging Structure Plan policy H18 sets out a Cumbria wide target of 50% of new housing to be on brownfield land. This is then broken down to specific targets to match the specific housing allocations. As the LDNP does not have an allocation, it has no specific sub-area target. Emerging RSS policy Table 9.1 sets a target of at least 40% brownfield for the LDNP.						
Actual Achieved Measure:	66.6% on brownfield						
Analysis/Policy Assessment:							
The brownfield target of 60% has been achieved. The lowering of the target for the LDNP area through the JSP and RSS recognises that the ability to hit the target for the percentage of brownfield land redeveloped depends on the amount of brownfield land available, and this amount will continue to decrease, as opportunities for redevelopment are taken up.							
Illustrations, charts, etc:							
<div style="text-align: center;"> <p><b>Brownfield/Greenfield Split</b></p>  <p>A pie chart titled 'Brownfield/Greenfield Split' showing the distribution of land. The chart is divided into two segments: a larger blue segment representing 'brownfield' at 66.6%, and a smaller maroon segment representing 'greenfield' at 33.3%. A legend to the right of the chart identifies the colors: blue for 'brownfield' and maroon for 'greenfield'.</p> <table border="1"> <thead> <tr> <th>Category</th> <th>Percentage</th> </tr> </thead> <tbody> <tr> <td>brownfield</td> <td>66.6%</td> </tr> <tr> <td>greenfield</td> <td>33.3%</td> </tr> </tbody> </table> </div>		Category	Percentage	brownfield	66.6%	greenfield	33.3%
Category	Percentage						
brownfield	66.6%						
greenfield	33.3%						
Review of saved policies/LDDs:							
N/A							
Future Actions/Comments:							
The LDF will need to take forward the brownfield targets identified in RSS. The forthcoming Urban Capacity Study can help identify brownfield opportunities, both land and buildings. The site specific allocation policies will also need to consider the sequential approach to development, and how any allocations can contribute to the brownfield target.							

## 8.8 Business Development

**Business Development:** The aim of current Local Plan policy is to enable economically viable and socially balanced communities in the National Park. This can be assisted by encouraging a wider range of local employment opportunities for local people, not least school leavers, through the diversification of the economic base and, in addition, supporting the needs of existing businesses. Currently the economic base is rather narrowly drawn from agriculture and tourism and is vulnerable to changes in these market sectors. A wider base will assist in stabilising full-time paid employment and help to secure jobs with higher GVA ratings for the resident community.

<b>Type of Indicator: Core No/Ref: 1a</b>		<b>Indicator: Amount of floorspace developed for employment by type</b>			
Other Indicator Refs:		RSS 1a, Local			
Data Source:		LDNPA Employment Land Availability Database			
Spatial Scale Measured:		Authority wide			
<b>Objective/Commentary:</b>					
Indicator will enable monitoring of actual developments completed to determine the range of business and employment opportunities being secured.					
<b>Indicator Measure</b>					
Actual Target (if any):		None			
Where Set:					
Actual Achieved Measure:		1737m2			
<b>Analysis/Policy Assessment:</b>					
<p>Between 1 April 2004 and 31 March 2005 22 developments were completed within the National Park.</p> <p>Whilst the Authority's Employment Land Availability database captures data encompassing Use Classes B1, B2 and B8 it is not currently possible to analyse the data in the database by individual Use Class as developments are classified using the categories of; Manufacture, Office, Storage/Distribution, and Business. This similar classification can usefully illustrate the range of uses within Use Classes B1 – B8 and will give a reasonable assessment of different types of use.</p> <p>Within the National Park planning approvals are often given for a range of uses, i.e. a site may be granted permission for B1 and B2 use, either of which would be acceptable, therefore it is not always possible to split developments out into B1, B2 and B8 separately. In our experience, applications for B1 use are often of a speculative nature and approvals do not specify the breakdown between a, b or c to enable a broader range of opportunities for the proposed development.</p> <p>Developments within the National Park tend to be of a very small scale. Of the 22 developments which were completed during the 12 months up to 31 March 2005, 14 developments provided premises of less than 100m2 floorspace, there were 6 new premises of between 100m2 and 200m2, and only 1 development provided premises of over 200m2 floorspace. Of the 22 developments completed, 8 were for Manufacturing uses, 8 were for Office developments, 4 were for storage/distribution, and 2 for Business use.</p>					
<b>Illustrations, charts, etc:</b>					
<b>Use Type</b>	<b>No of Sites</b>	<b>Type</b>	<b>G/B</b>	<b>Area</b>	<b>F'Space</b>
<b>Manufacture</b>	8 sites	5C 1 Extn 1 NB 1 LO	7 B 1 G	0.5047Ha	693m2
<b>Office</b>	8 sites	6C 1 Redev 1 NB/Extn	8 B	0.104	583
<b>Storage</b>	4 sites	3C 1 NB	4 B	0.064Ha	199m2
<b>Business</b>	2 Sites		1.5 B 0.5 G	0.07Ha	262m2
<b>TOTAL</b>	<b>22 Sites</b>	<b>15C 1LO 4NB 1E 1R</b>	<b>20.5 B 1.5 G</b>	<b>0.7427Ha</b>	<b>1737m2</b>
<b>C=Conversion, LO=Land Only, NB=New Build, E=Extension, R=Redevelopment</b>					

<b>Future Actions/Comments:</b>
ELA database refinements by 2006 update
We are exploring refinements to the Employment Land Availability database and to the way this information is collected, captured and related to actual developments to enable more suitable monitoring of Use Classes B1a-c, B2 and B8.

<b>Type of Indicator: Core No/Ref: 1b</b>	<b>Indicator: Amount of floorspace developed for employment by type, in employment or regeneration areas.</b>
Other Indicator Refs:	RSS 1b
Data Source:	LDNPA Employment Land Availability Database
<b>Objective/Commentary:</b>	
The Lake District National Park does not have any employment or regeneration areas identified in either the Local Plan or Local Development Framework.	
<b>Indicator Measure</b>	
Actual Target (if any):	None

<b>Type of Indicator: Core No/Ref: 1c</b>	<b>Indicator: Amount of completed floorspace by employment type, which is on previously developed land.</b>
Other Indicator Refs:	RSS 1c
Data Source:	LDNPA Employment Land Availability Database
Spatial Scale Measured:	Authority wide
<b>Objective/Commentary:</b>	
<p>National policy<sup>1</sup> highlights the importance of delivering sustainable development. It highlights the need to provide sufficient land in suitable locations to be made available for industrial and commercial development, so that the economy can prosper. Development Plan policies seek to minimise the use of resources by making more efficient use or re-use of existing resources encouraging the use of previously developed land. (<sup>1</sup>PPS1 : 2005)</p> <p>The objective is therefore to seek to maximise the re-use of previously developed land.</p>	
<b>Indicator Measure</b>	
Actual Achieved Measure:	1554m2      89.46%
<b>Analysis/Policy Assessment:</b>	
<p>Table 1 below illustrates clearly that developments in the National Park tend to be of a very small scale and over 68% of developments came about through the conversion of an existing building rather than through the provision of land. Whilst the Authority's Employment Land Availability database captures data encompassing Use Classes B1, B2 and B8 it is not currently possible to analyse the data in the database by individual Use Class as developments are classified using the categories of; Manufacture, Office, Storage/Distribution, and Business. This similar classification can usefully illustrate the range of uses within Use Classes B1 – B8 and will give a reasonable assessment of different types of use.</p> <p>The outcome of this analysis shows that of 22 sites developed in total, 20 were on previously developed land, one was partially on previously developed land and only one site was a new build unit on green field land. 89.46% of developments therefore took place on previously developed land, providing 1554m2 of floorspace.</p>	

**Table 1: Detailed Information on Site type by Greenfield/Previously Used Land**

Use Type	No of Sites and Site Type	Type	G/B	Area	F'Space	% Brownfield/ Greenfield
<b>Manufacture</b>	8 sites	5C 1 Extn 1 NB 1 LO	7 B 1 G	0.5047Ha	693m2	
20.78%	Greenfield	1 NB	1	0.01	144	20.78%
79.22%	Brownfield	5 C 1 Extn 1 LO	7	0.4947	549	79.22%
<b>Office</b>	8 sites	6C 1 Redev 1 NB/Extn	8 B	0.104	583	
	Greenfield	0	0	0	0	0.00%
	Brownfield	6 C 1 Redev 1 NB/Ext	8	0.104	583	100%
<b>Storage</b>	4 sites	3C 1 NB	4 B	0.064Ha	199m2	
	Greenfield	0	0	0	0	0.00%
	Brownfield	3C 1 NB	4 B	0.064Ha	199m2	100%
<b>Business</b>	2 Sites		1.5 B 0.5 G	0.07Ha	262m2	
	Greenfield	0.5 NB	0.5	0.015	39	14.89%
	Brownfield	1.5 C	1.5	0.055	223	85.11%
<b>TOTAL</b>	<b>22 Sites</b>	<b>15C 1LO 4NB 1Extn 1Redev</b>	<b>20.5 B 1.5 G</b>	<b>0.7427Ha</b>	<b>1737m2</b>	
<b>10.54%</b>	<b>Greenfield</b>	<b>1.5 NB</b>	<b>1.5</b>	<b>0.0250</b>	<b>183m2</b>	<b>10.54%</b>
<b>89.46%</b>	<b>Brownfield</b>		<b>20.5</b>	<b>0.7177</b>	<b>1554m2</b>	<b>89.46%</b>

Table 2 below shows how much land and floorspace has been developed in the 12 months up to 31 March 2005 within each of the classifications currently used within the Authority's Employment Land Availability Database. For Office and Storage uses, developments were all on previously developed land sites, with over 89% of Business uses and 79% of manufacturing developments taking place on previously developed land. This illustrates clearly and supports the Authority's stance through Structure Plan policies EM13 and EM15 and Local Plan policies E1 to E6 in the way employment land is provided and encouragement given to the re-use of existing buildings and previously developed land.

Use Type	Site Area (Ha)	Floorspace (m2)	% Floorspace on Previously Developed Land
Manufacture	0.4947	549	79.22
Office (B1a)	0.104	583	100
Storage	0.064	199	100
Business	0.055	223	85.11
<b>TOTAL</b>	<b>0.7177</b>	<b>1554m2</b>	<b>89.46%</b>

<b>Review of saved policies/LDDs:</b>
Saved policies to be retained pending future development of LDD.
<b>Future Actions/Comments:</b>
We are exploring refinements to the Employment Land Availability database to try and enable specific monitoring of Use Classes B1a-c, B2 and B8 for the 2006 Annual Monitoring Report.

<b>Type of Indicator: Core No/Ref: 1d</b>	<b>Indicator: Employment land available by type.</b>
Other Indicator Refs:	RSS 1d, Local
Data Source:	LDNPA Employment Land Availability Database
Spatial Scale Measured:	Authority wide
<b>Objective/Commentary:</b>	
<p>National policy (PPS1, 2005) highlights the importance of delivering sustainable development. It highlights the need to provide sufficient land in suitable locations to be made available for industrial and commercial development, so that the economy can prosper. Development Plan policies seek to take this forward and to minimise the use of resources by making more efficient use or re-use of existing resources encouraging the use of previously developed land.</p> <p>Structure Plan Policies EM13 and EM15 and Local Plan policies E1 to E6 seek to encourage economic activities to improve economic performance, promote opportunities for diversifying the economy and providing a wider choice of employment opportunities. Emphasis is placed on developing higher value added business activities. Structure Plan policy EM13 requires 3Ha of employment land to be provided through Local Plan allocations for the period 2001 to 2016.</p> <p>Policies seek to ensure that an adequate supply of land for a variety of business uses, in a variety of locations, comes forward through the Local Plan allocations.</p> <p>This indicator seeks to quantify the amount of employment land available on sites with planning permission or that are allocated in the Local Plan.</p>	
<b>Indicator Measure</b>	
Actual Target (if any):	3ha
Where Set:	Structure Plan (Policy EM13)
Actual Achieved Measure:	8.332Ha*
<b>Analysis/Policy Assessment:</b>	
<p>*Figure above does not include sites under construction.</p> <p>There are currently 41 sites in the National Park with land available for development. 5 of these are where development is currently under construction amounting to (0.32ha). The land under construction has not been included in the calculations of the amount of land still available for development or numbers of sites available. 23 of the 41 sites available (including those still under construction) are for 'own use' developments rather than for speculative purposes.</p> <p>6 sites (3.22ha) are allocated in the Lake District National Park Local Plan for B1/B2 use. This amounts to 39% of the total land available. The requirement set in Structure Plan policy EM13 is therefore currently being met.</p> <p>As illustrated in Table 1 below, in the Allerdale part of the National Park there are 6 sites, distributed in 4 settlements amounting to a total of 1.21ha available. In Copeland area there is just 1 site of 0.16ha, which is for the applicant's own use. In Eden area there are 4 sites amounting to 0.25ha available in 4 settlements. The majority of sites (29 of 36 or 6.712ha of the total of 8.332ha available land) are in the South Lakeland part of the National Park, equating to 81% of sites available and, also 81% of the total land available in the National Park reflecting the higher demand for premises in this area. The land available in this area of the National Park is distributed in Ambleside (3 sites), Aynsome, Backbarrow (2), Broughton in Furness, Coniston (3), Crook, Haverthwaite, Hawkshead, Lindale, Nr Sawrey, Rydal,</p>	

Staveley (2), Troutbeck Bridge (2), Windermere, Witherslack (2) and Wood Broughton. This illustrates the need for employment opportunities to be available to meet local needs in a variety of settlements is being achieved.

**Table 1 Land Availability by Geographic Area as at 31 March 2005**

<b>Geographic Area</b>	<b>Use Type</b>	<b>Site Type</b>	<b>U/C</b>	<b>With P/P</b>	<b>Alloc LP</b>	<b>Total Av</b>
ALLERDALE TOTAL 6 sites	4C 1NB 1Ext	5B 1G	0.00	0.55	0.66	1.21
COPELAND TOTAL 2 sites (1 U/C)	2C	2B 100%	0.06	0.16	0.00	0.16
EDEN TOTAL 4 sites	2C(A) 1NB 1R	2B 2G 50%	0.00	0.25	0.00	0.25
SOUTH LAKES TOTAL 29 sites (4 U/C)	10 NB 2C(A) 11C 5R 1Ext	23B 6G	0.26	4.152	2.56	6.712
<b>NATIONAL PARK TOTAL 41 sites (5 U/C)</b>	<b>17C 12NB 2E 4C(A) 6R</b>	<b>32B 9G</b>	<b>0.32</b>	<b>5.112</b>	<b>3.22</b>	<b>8.332</b>
*Total Available column = Land With P/P and Alloc LP columns C=Conversion, LO=Land Only, NB=New Build, E=Extension, R=Redevelopment						

Business developments in the National Park tend to be small scale reflecting local needs and the micro-scale nature of much of the economy. This is illustrated by the following figures:

- 31 of the sites available are smaller than 0.50ha with 20 of these smaller than or equal to 0.10ha in site area.
- 4 sites are between 0.50ha and 1.00ha in size
- Only 1 site is larger than 1.00ha – the redevelopment of the former Backbarrow Ironworks site.

Table 2 below shows that 28 of the sites available are on previously developed land with only 8 classified as greenfield sites. This amounts to 6.522ha (78%) of land with planning permission or allocated in the Local Plan being previously developed land, and 1.81ha (22%) Greenfield sites. 12 of the 36 sites are conversions of buildings with a further 4 being converted agricultural buildings so are classified as 'greenfield'. This illustrates the positive implementation of Local Plan policy E3. A further 6 are redevelopment sites.

**Table 2 Land Availability from Greenfield and Previously Developed Land**

Land Type on Sites Available	Use Type	Site Type	U/c	With P/P	Alloc LP	Total Av*
Brownfield 28 sites	12C 2 Ext 8NB 6R	28 B	0.29	3.962	2.56	6.522
Greenfield 8 sites	4 NB 4C(A)	8G	0.03	1.15	0.66	1.81
<b>NATIONAL PARK TOTAL 36 sites</b>	<b>12C 12NB 2E 4C(A) 6R</b>	<b>36</b>	<b>0.32</b>	<b>5.112</b>	<b>3.22</b>	<b>8.332</b>
*Total Available column = Land With P/P and Alloc LP columns C=Conversion, LO=Land Only, NB=New Build, E=Extension, R=Redevelopment						

Using the current classification system from the Authority's Employment Land Availability database, Table 3 below shows the amount of land available by type of activity, split into Manufacturing, Storage/Distribution, Business and Office uses.

73% of the land currently available is classed as for Manufacturing uses with only 2% available for storage/distribution uses.

**Table 3 Land Availability by Use Type**

Use Type	Use Type	Site Type	U/C	With P/P	Alloc LP	Total Av *(Ha/%)
MANUFACTURING TOTAL 21 sites	3C 10NB 2Ext 2C(A) 4R	16B 5G	0.16	2.91	3.22	6.13ha 73%
STORAGE/DIST TOTAL 2 sites	1C 1C(A)	1B 1G	0.00	0.21	0.00	0.21Ha 2%
BUSINESS TOTAL 6 sites	3C 1NB 1C(A) 1R	4B 2G	0.16	1.07		1.07Ha 13%
OFFICE TOTAL 7 sites	5C 1NB 1R	7B	0.00	0.922	0.00	0.922Ha 12%
<b>NATIONAL PARK TOTAL 36 sites</b>	<b>12C 12NB 2E 4C(A) 6R</b>	<b>28B 8G</b>	<b>0.32</b>	<b>5.112</b>	<b>3.22</b>	<b>8.332Ha 100%</b>
*Total Available column = Land With P/P and Alloc LP columns C=Conversion, LO=Land Only, NB=New Build, E=Extension, R=Redevelopment						

#### Review of saved policies/LDDs:

Saved policies to be retained pending future development of LDD.

**Future Actions/Comments:**

We are exploring refinements to the Employment Land Availability database to try and enable specific monitoring of Use Classes B1a-c, B2 and B8 for the 2006 Annual Monitoring Report.

<b>Type of Indicator: Core No/Ref: 1e</b>	<b>Indicator: Losses of employment land in (i) employment/regeneration areas and (ii) local authority area.</b>
Data Source:	LDNPA Employment Land Availability Database
Spatial Scale Measured:	Authority wide
<b>Objective/Commentary:</b>	
<p>In the National Park land is scarce for development purposes and there are competing demands from users who can command much higher land values. The policy approach in both the Structure and Local Plan therefore seeks to protect employment sites and premises from alternative uses.</p> <p>Local Plan policy E2 and Structure Plan policy EM14 seek to protect employment sites and premises in the National Park from being used for other purposes unless unsuitable or unviable for business use. Where other viable alternatives are available in the locality, use for other purposes can be considered.</p> <p>The Lake District National Park has no employment or regeneration areas identified.</p>	
<b>Indicator Measure</b>	
Actual Target (if any):	No loss
Actual Achieved Measure:	One lost site
<b>Analysis/Policy Assessment:</b>	
<p>There has only been one loss of a small employment site (0.04ha) in the last year. This was for the conversion of a workshop to residential use with occupancy tied to a second workshop on the site. This is also covered via Indicator 1f below.</p>	
<b>Review of saved policies/LDDs:</b>	
<p>Saved policies to be retained pending future development of LDD</p>	
<b>Future Actions/Comments:</b>	
<p>Further refinements to the Authority's Employment Land Availability database to enable monitoring of 'losses' of employment land are to be explored.</p>	

<b>Type of Indicator: Core No/Ref: 1f</b>	<b>Indicator: Amount of employment land lost to residential development.</b>
Data Source:	LDNPA Employment Land Availability Database
Spatial Scale Measured:	Authority wide
<b>Objective/Commentary:</b>	
<p>In the National Park land is scarce for development purposes and there are competing demands from users who can command much higher land values. The policy approach in both the Structure and Local Plan therefore seeks to protect employment sites and premises from alternative uses.</p> <p>Local Plan policy E2 and Structure Plan policy EM14 seek to protect employment sites and premises in the National Park from being used for other purposes unless unsuitable or unviable for business use. Where other viable alternatives are available in the locality, use for other purposes can be considered.</p>	
<b>Indicator Measure</b>	
Actual Target (if any):	No loss
Actual Achieved Measure:	One site lost
<b>Analysis/Policy Assessment:</b>	
<p>There has only been one loss of a small employment site (0.04ha) in the last year. This was for the conversion of a workshop to residential use with occupancy tied to a second workshop on the site.</p>	
<b>Review of saved policies/LDDs:</b>	
<p>Saved policies to be retained pending future development of LDD.</p>	
<b>Future Actions/Comments:</b>	
<p>Further refinements to database to enable monitoring of 'losses' of employment land.</p>	

## 8.9 Local Services

<p><b>Local Services:</b> The Joint Structure Plan seeks to ensure that services and facilities are available in towns and villages. The Local Development Framework will need to establish the importance of local centres and facilities and identify measures which will help to sustain them. The Authority will need to carry out surveys of the existing and future needs of communities for open space, sport and recreational and cultural activities and carry out audits of existing facilities. Where appropriate, local standards should be set out in the LDF to identify specific needs and areas of shortfall.</p>
---

<b>Type of Indicator: Core No/Ref :4a</b>	<b>Indicator: Amount of completed retail, office and leisure development.</b>
Other Indicator Refs:	RSS4a
Data Source:	LDNPA Planning Applications Database and monitoring
Spatial Scale Measured:	Authority wide
<b>Objective/Commentary:</b>	
<p>National policy (PPS6, ODPM, 2005) promotes sustainable development and aims to focus new development for retail, office and leisure uses in existing town centres. Growth and investment should therefore seek to promote vital and viable town centres. In the National Park settlements are generally small and scattered and it is important that local services are supported and retained to enable sustainable communities to thrive.</p>	

A suite of policies has been developed in the Joint Structure Plan (L52 to L57) to enable the provision of local services and facilities to meet the needs of communities.

Local Plan policy seeks to sustain rural community life within the National Park by ensuring that new development meets social and economic needs and that existing facilities are retained. Local shops and services are important facilities in this context. The following objectives underpin the retail policies (R1 to R7) of the Local Plan:

- To foster the vitality and viability of the shopping centres of Ambleside, Bowness, Windermere and Keswick in a manner which does not conflict with the need to preserve and enhance the character and appearance of the built environment.
- To ensure the number, location, extent and form of additional retail development outside these commercial centres helps to meet the needs of local communities and protects and enhances the character and appearance of the National Park.

One objective of the Local Plan is to protect existing sport and recreation facilities from development (Policy S1) and to allow for the improvement and alteration of those facilities where they do not compromise the landscape and to give favourable consideration to the provision of new facilities to meet the needs of local communities (Policy S2). The Plan also aims to encourage the provision of children's play facilities in areas of new development (Policy S3) and to protect existing public rights of way (Policy S5).

#### Indicator Measure

Actual Target (if any): None

#### Analysis/Policy Assessment:

Category B1a is currently captured via the Business Development indicators.

It has not been possible to put systems in place to monitor retail, office and leisure developments for the 2005 Annual Monitoring Report. This will be addressed with the intention being to be in a position to provide at least some of the data required for the 2006 Annual Monitoring Report.

#### Illustrations, charts, etc:

#### Review of saved policies/LDDs:

Saved policies to be retained pending future development of LDD

#### Future Actions/Comments:

Secure resources to set up monitoring system for retail, office and leisure developments with ability to disaggregate for town centre developments data.

<b>Type of Indicator: Core No/Ref: 4b</b>	<b>Indicator: Amount of completed retail, office and leisure development in town centres.</b>
Other Indicator Refs:	RSS4b
Data Source:	LDNPA SWIFT Database and monitoring
Spatial Scale Measured:	Authority wide
<b>Objective/Commentary:</b>	
National policy (PPS6, ODPM, 2005) promotes sustainable development and aims to focus new development for retail, office and leisure uses in existing town centres. Growth and investment should therefore seek to promote vital and viable town centres. In the National Park settlements are generally small and scattered and it is important that local services are supported and retained to enable sustainable communities to thrive.	

A suite of policies has been developed in the Joint Structure Plan (L52 to L57) to enable the provision of local services and facilities to meet the needs of communities. Structure Plan policy L52 specifically encourages measures to promote the vitality and viability of town centres with policy L53 considering access and town centres.

Local Plan policy seeks to sustain rural community life within the National Park by ensuring that new development meets social and economic needs and that existing facilities are retained. Local shops and services are important facilities in this context. The following objectives underpin the retail policies (R1 to R7) of the Local Plan:

- To foster the vitality and viability of the shopping centres of Ambleside, Bowness, Windermere and Keswick in a manner which does not conflict with the need to preserve and enhance the character and appearance of the built environment.
- To ensure the number, location, extent and form of additional retail development outside these commercial centres helps to meet the needs of local communities and protects and enhances the character and appearance of the National Park.

One objective of the Local Plan is to protect existing sport and recreation facilities from development (Policy S1) and to allow for the improvement and alteration of those facilities where they do not compromise the landscape and to give favourable consideration to the provision of new facilities to meet the needs of local communities (Policy S2). The Plan also aims to encourage the provision of children's play facilities in areas of new development (Policy S3) and to protect existing public rights of way (Policy S5).

#### Indicator Measure

Actual Target (if any): None

#### Analysis/Policy Assessment:

Category B1a is currently captured via the Business Development indicators.

To date, efforts have concentrated on undertaking periodic Town Centre Health Checks, organised on a county-wide basis. Six National Park settlements have been included in these studies. The first Health Check was undertaken in 1997, consisting of:

- A quantitative survey based on the specific indicators cited in PPG6 'Town Centres and Retail Development' and a subsequent study 'Vital and Viable Town Centres: Meeting the Challenge' (URBED 1994), and
- An attitudinal survey based on a sample questionnaire produced by a collaboration of major retailers and the 'Association of Town Centre Management' in which businesses and organisations score factors relating to the health of their centres focused on the towns attractions, accessibility and amenity.

This provided baseline data for the centres included. The results of this survey were published in August 1998 in the Report 'Cumbria Town Centres Health Check' which included a town centre profile for each centre outlining the results of the quantitative and attitudinal surveys, and a chart showing the key indicators grouped by Attractions, Out of Centre Retailing, Accessibility, Amenity and Action. In July 1998 a further survey took place to update the key indicators and this was published in 'Cumbria Town Centres Health Check – Update of Key Indicators' in December 1999. Further survey work was undertaken in 2000 but the county-co-ordinated exercise was not completed so data is not available for this update.

It is appropriate to include some of the Key Indicators from the 1998 study as baseline data:

SUBJECT/ Indicator	Data	Ambleside	Keswick	W'Mere/ Bowness	Coniston	Grasmere	Hawkshead
<b>RETAILING</b>							
F'Space	Total no of units	124	172	245	27	46	30
	Total f'space	15445m2	26422 m2	24268m 2	1959m2	5395m2	3278m2

Retail Offer	Enclosed shopping centre	0	0	0	0	0	0
	Multiples	6	13	9	1	3	1
	Dept Stores	0	0	0	0	0	0
	Ind Stores	92	104	158	15	25	15
	Charity Shops	1	5	4	0	0	0
	Vacant Units	3	15	10	1	0	1
Markets	Days of operation	1	2	0	0	0	0
	No of stalls	<10	>20	0	0	0	0

#### OFFICES

F'space in shop area	Total No units with ground floor frontage	9	29	39	1	2	3
	Total f'space	1347m2	2381m2	5158	46m2	27m2	172m2

#### ARTS/CULTURE/LEISURE

Cinema screens	Total number	2	1	2	0	0	0
Theatre		0	1	1	0	0	0
Hotels/Pubs		6	10	15	5	8	6
Cafes/Restaurants		19	14	45	6	5	9
Library		1	1	1	1	0	0
Museum		0	1	0	1	0	2
Art Galleries		0	2	2	0	2	2
Sports/Leisure facilities		0	2	3	1	0	0

There has been no further opportunity to carry out an update of the key indicators due to other priorities and commitments. However, a pilot study was carried out in Summer 2005 to develop methodology and practices to enable our Volunteers to assist with future recording of indicators on services in National Park settlements. It is intended to roll this out to a wider number of settlements from 2006 onwards. However, this will take some time to complete and comprehensive results are unlikely to be available for some time yet.

It has not been possible to put systems in place to monitor retail, office and leisure developments for the 2005 Annual Monitoring Report. This will be addressed with the intention being to be in a position to provide at least some of the data required for the 2006 Annual Monitoring Report.

#### Future Actions/Comments:

Secure resources to set up monitoring system for retail, office and leisure developments with ability to disaggregate town centre developments data.

<b>Type of Indicator: Core No/Ref: 4c</b>	<b>Indicator Amount of eligible open spaces managed to Green Flag Award standard.</b>
Spatial Scale Measured:	Authority wide
Linkage with other strategy/plan:	Rights of Way Improvement Planning Research Phase 1 Report, August 2005 Faber Maunsell/Asken Ltd Commissioned by CCC/LDNPA
<b>Objective/Commentary:</b>	
<p>To achieve Green Flag Award standards for publicly accessible open space.</p> <p>National policy is set out in the ODPMs Public Service Agreement target 8 which is for local authorities to lead the delivery of cleaner, safer and greener public spaces and improvements of the quality of the built environment in deprived areas and across the country, with measurable improvements by 2008.</p> <p>The Green Flag Award is the national standard for parks and green spaces in England and Wales. The award is managed by the Civic Trust, on behalf of the ODPM and the Green Flag Advisory Board. Awards are given on an annual basis and those that are successful must apply each year to renew their status. The Core Output Indicator does not require that sites should have been awarded Green Flag status but the percentage of publicly accessible open space that is 'managed' to Green Flag Award standard.'</p> <p>Areas of open space of particular importance have been identified within the larger settlements of the National Park in the Local Plan and are shown on the Proposals Maps. Policies deal with the protection and designation of areas of public and private open space with Policy BE18 affording particularly strong protection to areas of important open space.</p>	
<b>Analysis/Policy Assessment:</b>	
<p>Data is not currently available for this indicator.</p> <p>The Authority, with Cumbria County Council, appointed consultants to undertake some research which aimed to fully understand the needs and preferences of key audiences for countryside access and recreation in Cumbria, through:</p> <ul style="list-style-type: none"> <li>Identifying the key audiences for the Cumbria Rights of Way Improvement Plan (CROWIP);</li> <li>Gathering and setting out missing information from the key audiences to identify their needs and preferences for countryside access and recreation in Cumbria; and</li> <li>Showing how the strategy and practical outcomes of the CROWIP can both help to meet these needs and preferences and deliver the aims of the Cumbria Countryside Access Strategy (CCAS). The research identified the key needs and preferences and the potential measures to address the key needs and preferences and erode the barriers to wider participation. The majority of identified needs and preferences meet the key aims identified in the CCAS but some are incompatible with CCAS.</li> </ul> <p>During 2006 an assessment of open spaces and recreational facilities is being undertaken which will build on and extend the scope of the work covered in the Rights of Way Improvement Planning Research Report. It is intended that this will provide the information needed to meet the indicator as to the amount of eligible open spaces managed to Green Flag Award standard for the 2006 Report.</p>	
<b>Review of saved policies/LDDs:</b>	
Saved policies to be retained pending future development of LDD.	
<b>Future Actions/Comments:</b>	
Completion of Open Spaces Assessment to indicate amount managed to Green Flag Award standard.	

## 8.10 Minerals and Waste

**Waste** Work on our Core Policies including Minerals and Waste begins in early 2006. This work will include liaising with Cumbria County Council as the Planning Authority for Cumbria outside the Lake District National Park. Discussions on how best we can provide information on the core indicators, and develop local indicators will be a key part of these discussions.

Type of Indicator: CORE No/Ref: 6a	Indicator: Capacity of New Waste Management facilities by type
Other Indicator Refs:	
Data Source:	Cumbria County Council Minerals and Waste Team
Spatial Scale Measured:	Monitoring of permissions/completions undertaken at a Park wide scale. Consideration still needs to be given to the most appropriate way to monitor and assess capacity.
Linkage with other strategy/plan:	Emerging JSP policy R49 Local Plan policies W3 and W4
<b>Objective/Commentary:</b>	
The emerging Structure Plan acknowledges that new waste recovery facilities will be required to meet Government and European targets for the increased recovery and recycling of waste. Policy R49 indicates that large-scale recovery sites should be located in the vicinity of the larger centres of Carlisle, Penrith, Workington, Whitehaven, Kendal and Barrow, none of which are inside the National Park. The policy does however also promote the creation of new small-scale recovery facilities within the larger settlements of the National Park and the provision of new civic amenity sites throughout the County. Policies W3 and W4 in the Local Plan also indicate that favourable consideration will be given to new civic amenity and local recycling facilities in appropriate locations. In preparing our LDF policies we may need to allocate site for additional household recycling centres.	
<b>Analysis/Policy Assessment:</b>	
We have not granted, or received any applications for planning permissions for waste management developments during 2004/5. We are however aware of several issues relating to specific sites and settlement requirements in the National Park. These discussions are continuing, and may result in application within the next monitoring period.	
At this stage it is considered that the available information about their capacities and about existing capacities is not consistent and that it would be misleading to set out figures for increased capacity. It is intended to resolve this matter before next year's monitoring report.	
<b>Review of saved policies/LDDs:</b>	
Our waste policies in chapter 15 of the Local Plan will be reviewed as part of the work on LDF Core Policies.	
<b>Future Actions/Comments:</b>	
We may need allocate new sites for household recycling centres in our LDF.	

**Minerals:** Work on our Core Policies including Minerals and Waste begins in early 2006. This work will include liaising with Cumbria County Council as the Planning Authority for Cumbria outside the Lake District National Park. Discussions on how best we can provide information on the core indicators, and develop local indicators will be a key part of these discussions.

Type of Indicator: CORE No/Ref: 5a	Indicator: The production of primary land won aggregates (tonnes)
Other Indicator Refs:	
Data Source:	Cumbria County Council Minerals and Waste Team. The latest figures that are available are from the North West Regional Aggregates Working Party Annual Report 2004. These are up to the calendar year 2003 and include quarries that are within the Lake District National Park.

Spatial Scale Measured:	County-wide (cannot be broken down to LDNPA level, for reasons of commercial confidentiality)
<b>Objective/Commentary:</b>	
<p>The emerging Structure Plan includes policy R46, which ensures that development that would sterilise mineral resources that may need working in the future will not be permitted. Policy R48 also sets out the occasions where minerals working the National Park may be permitted, which includes small scale extensions to existing working, or small-scale re-opening of previously worked quarries to provide dimension building stone, and the small scale extension to existing slate quarries where no other reasonable source of supply is available.</p> <p>Local Plan policies M1 and M2 set out the requirements for major and minor minerals development in the National Park.</p> <p>It is expected that nearly all of any new primary land won aggregates will occur outside the National Park.</p> <p>Paragraph 8.15 of the emerging Structure Plan also indicates that with the exception of dimension and building stone there are adequate supplies of minerals to meet RPG targets without the need to make further provision within the National Park.</p>	
<b>Indicator Measure</b>	
Actual Target (if any):	Aggregate guidelines sub-regional apportionment figures of 4.1 M tonnes of crushed rock and 0.7 M of sand and gravel tonnes.
Where Set:	ER9 and ER10 of RPG
Actual Achieved Measure:	The average annual sales 2000 to 2003 for Cumbria were 3.97 M tonnes and 0.9 M tonnes respectively.
<b>Analysis/Policy Assessment:</b>	
<p>The annual sales of crushed rock have, therefore, been marginally lower than the apportionment (by 130,000 tonnes/year or 3%) and those for sand and gravel have been significantly higher than the apportionment (by 200,000 tonnes/year or 29%).</p>	
<b>Review of saved policies/LDDs:</b>	
<p>Our minerals policies in Chapter 14 of the Local Plan will be reviewed as part of the work on LDF Core Policies.</p>	
<b>Future Actions/Comments:</b>	
<p>(Summary comment for Table)</p> <p>We have been asked by Cumbria County Council minerals and waste team to consider if we would revoke any existing permissions. This would require a comprehensive review of existing and extant permissions, and an assessment of likely cost implications, which would be significant, before any judgement could be made.</p>	

<b>Type of Indicator: CORE No/Ref: 5b</b>	<b>Indicator: The production of secondary/recycled aggregates (tonnes)</b>
Other Indicator Refs:	
Data Source:	Cumbria County Council Minerals and Waste Team
Spatial Scale Measured:	Currently only figures for the North West region can be provided
Linkage with other strategy/plan:	Emerging Structure Plan policy R48 Local Plan policies M1 and M2
<b>Objective/Commentary:</b>	
<p>Secondary aggregates are those produced from minerals wastes and recycled aggregates are those produced from previously used materials eg construction and demolition wastes. It is not possible to provide figures for the annual production of these within Cumbria. This is a national problem and it is hoped that progress will be made in time for next year's Monitoring Report.</p> <p>Government guidance and the focus on sustainable development provide for an increasing proportion of aggregate supplies to be met from these "alternative" materials. The aim is for them to provide approximately 25% of aggregates supplies. The Regional Aggregate Working Party Report only includes figures for secondary aggregates for the region as a whole and these are incomplete figures and do not include recycled aggregates.</p> <p>Arrangements need to be made for collecting accurate figures for recycled aggregates and for increasing the accuracy of those for secondary aggregates.</p>	

Indicator Measure	
Actual Achieved Measure:	In 2003 recorded sales of secondary aggregates in the North West were just under 760,000 tonnes. This compares with total aggregate production that year of 13.18 M tonnes, ie they represented just under 6% of aggregates supply. This is an underestimate because the published figures do not include output from all of the secondary aggregate and recycled aggregate producers.
Analysis/Policy Assessment:	
Emerging Structure Plan policy R48 includes reference to the possibility of mineral extraction in the National Park, in the form of small scale re-opening of previously worked slate quarries. This is one way in which secondary aggregates could be derived. As well as providing recycled aggregates, this also has the potential to offer landscape restoration benefits. Therefore, this option could be further explored, especially as there is a market for recycled projects to be used in conservation and other similar projects.	
Review of saved policies/LDDs:	
Our minerals policies in Chapter 14 of the Local Plan will be reviewed as part of the work on LDF Core Policies.	
Future Actions/Comments:	
Consideration could be given to if and how the LDF could proactively promote the reworking of slate quarries on a small scale.	

**Waste Development** Work on our Core Policies including Minerals and Waste begins in early 2006. This work will include liaising with Cumbria County Council as the Planning Authority for Cumbria outside the Lake District National Park. Discussions on how best we can provide information on the core indicators, and develop local indicators will be a key part of these discussions.

Type of Indicator: CORE No/Ref: 6b	Indicator: Amount of municipal waste arising and managed by management type, and the percentage each management type represents of the total waste management
Other Indicator Refs:	
Data Source:	Cumbria County Council Minerals and Waste Team: BVPI Household and municipal waste statistics for Cumbria 2004/5.
Spatial Scale Measured:	Countywide (the figures could possible be broken down by waste collection authority- but it is not possible, or particularly helpful, to secure these figures on a National Park wide basis)
Linkage with other strategy/plan:	Emerging JSP Policy R49: Waste Recovery Facilities Potential links with Community Strategies/LSP efforts to increase recycling and minimise waste Local Plan polices W1-W6
Objective/Commentary:	
<p>The LDNPA is not a waste collection or waste management authority. These responsibilities rest with the District and County Councils respectively. However as a planning authority there are things we can do through our policy and decision making functions to encourage recycling and composting.</p> <p>In preparing our LDF policies we may need to allocate site for additional household recycling centres. We could consider including policies about design and space standards in terms of individual units and/or developments that would allow the space for households to be able to store their recyclables. This is perceived to be a significant barrier to the take up rate for recycling.</p> <p>Also as a National Park Authority we administer the Sustainable Development Fund, this has been used to support innovative schemes around the themes are waste minimisation, recycling and composting. The SDF continues to be a potential source of funding to support other innovative schemes in the future.</p>	

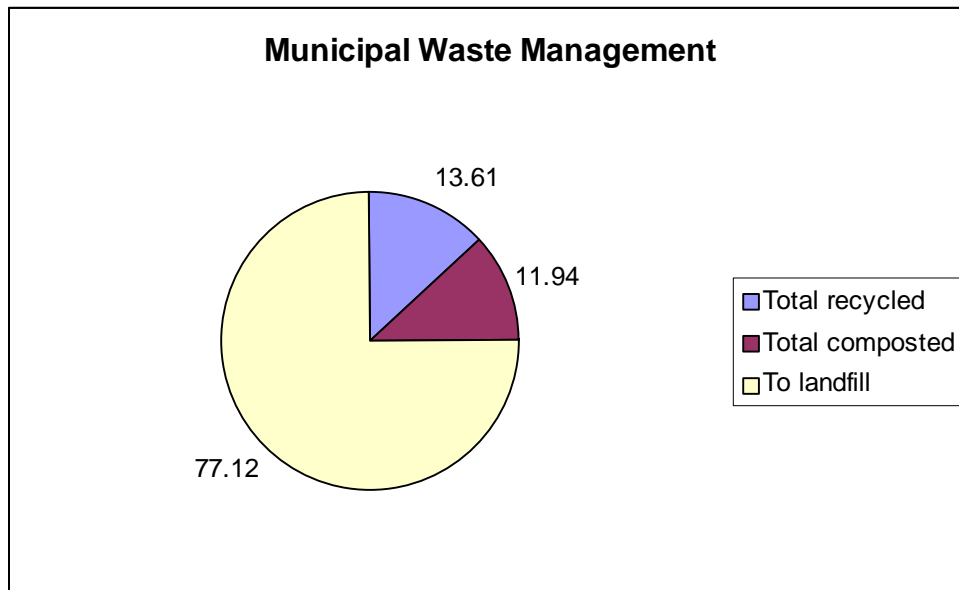
### Indicator Measure

Actual Achieved Measure:	For the year 1 April 2004 to 31 March 2005 the figure are: Total municipal waste 355,001 tonnes. Total recycled 43,261 tonnes (13.61%) Total composted 37,952 tonnes (11.94%) To landfill 273,787 tonnes (77.12%)
--------------------------	---

### Analysis/Policy Assessment:

The amount of municipal waste had increased by 10.2% over the previous year. This is largely attributable to green bin green garden waste collections. The amount that was land-filled increased by only 1% and the proportion of the total waste that went to landfill had fallen by 7% from 84%. The amount of waste composted more than doubled and recycling increased by just over 30% compared with 2003/04.

### Illustrations, charts, etc:



### Review of saved policies/LDDs:

Our waste policies in chapter 15 of the Local Plan will be reviewed as part of the work on LDF Core Policies.

### Future Actions/Comments:

Further thought should be given to if and how we could encourage space to be provided for households to be able to store their recyclables, in our LDF policies and if we need to allocate any new sites for household recycling centres.

## Summary Report on Core Indicators

Indicator Ref	Indicator	Target (if any)	Actual Achieved	Future Actions/Comments	Action on saved policies/LDDs
<b>Business Development</b>					
1a	Amount of floorspace developed for employment by type	-	1737m2	Refinements to NPA DC Planning Applications Database. Secure resources	Saved policies to be retained pending future development of LDDs
1b	Amount of floorspace developed for employment by type, in employment or regeneration areas	-	-	-	N/a
1c	Amount of floorspace by employment type, which is on previously developed land	-	1554m2/89.46%	Refinements to NPA DC Planning Applications Database. Secure resources	Saved policies to be retained pending future development of LDDs
1d	Employment land available by type	3Ha	8.332Ha	Refinements to NPA DC Planning Applications Database. Secure resources	Saved policies to be retained pending future development of LDDs
1e	Losses of employment land in (i) employment regeneration areas and (ii) local authority area	-	1 loss	Refinements to NPA DC Planning Applications Database. Secure resources	Saved policies to be retained pending future development of LDDs
1f	Amount of employment land lost to residential development	-	1 loss	Refinements to NPA DC Planning Applications Database. Secure resources	Saved policies to be retained pending future development of LDDs
<b>Housing</b>					
2a	Housing trajectory showing: <ul style="list-style-type: none"> <li>• Net additional dwellings over previous 5 year period or since the start of the relevant development plan document period, whichever is the longer;</li> <li>• Net additional dwellings for the current year;</li> <li>• Projected net additional dwellings up to the end of the relevant development plan</li> </ul>	-	-	Refinements to NPA DC Planning Applications Database. Secure resources	Saved policies to be retained pending future development of LDDs

	<p>document period or over a 10 year period from its adoption, whichever is the longer;</p> <ul style="list-style-type: none"> <li>• The annual net additional dwelling requirement; and</li> <li>• Annual average number of net additional dwellings needed to meet overall housing requirements, having regard to previous year's performance.</li> </ul>				
2b	Percentage of new and converted dwellings on previously developed land	40,50,60%	66.6%	Urban capacity study to be undertaken	
2c	<ul style="list-style-type: none"> <li>• Percentage of dwellings completed at:</li> <li>• Less than 30 dwellings per Ha;</li> <li>• Between 30 and 50 dwellings per Ha; and</li> <li>• Above 50 dwellings per Ha.</li> </ul>				
2d	Affordable housing completions		21	Refinements to NPA DC Planning Applications Database. Secure resources	
<b>Transport</b>					
3a	Amount of completed non-residential development within UCOs A, B and D complying with car-parking standards set out in the local development framework	-	Not available	Mechanisms put in place to capture data on NPAs DC Planning Applications Database from 2006	Saved policies to be retained pending future development of LDDs
3b	Amount of new residential development within 30 minutes public transport time of: a GP; a hospital; a primary school; a secondary school; areas of employment; and a major retail centre(s)	-	Not available	Pursue discussions with CAPITA and other District Authorities in 2006	Saved policies to be retained pending future development of LDDs
<b>Local Services</b>					
4a	Amount of completed retail, office and leisure development	-	Not available	Secure resources and set up monitoring system for retail, office and leisure developments.	Saved policies to be retained pending future development of LDDs

4b	Amount of completed retail, office and leisure development in town centres	-	Not available		Saved policies to be retained pending future development of LDDs
4c	Amount of eligible open spaces managed to Green Flag Award standard	-	Not available	Completion of open spaces assessment in 2006	Saved policies to be retained pending future development of LDDs
<b>Minerals</b>					
5a	Production of primary land won aggregates				
5b	Production of secondary/recycled aggregates				
<b>Waste</b>					
6a	Capacity of new waste amangement facilities by type				
6b	Amount of municipal waste arising, and managed by management type, and the percentage each management type represents of the waste managed.				
<b>Flood Protection and Water Quality</b>					
7	Number of planning permissions granted contrary to the advice of the Environment Agency on either flood defence grounds or water quality	-	28	Explore developments to NPA DC planning Applications Database	
<b>Biodiversity</b>					
78	Change in areas and populations of biodiversity importance, including: I. Change in priority habitats and species (by type); and II. Change in areas designated for their intrinsic environmental value including sites of international, national, regional, sub-regional or local significance.		Not available	Refinements to NPA DC Planning Applications Database and GIS	
<b>Renewable Energy</b>					
9	Renewable energy capacity installed by type	443MW	Not applicable	Refinements to NPA DC Planning Applications Database and GIS	

## **9.0 Process indicators: Progress on Local Development Scheme**

### **9.1 Background**

The timetable for the creation of documents within the Local Development Framework, as specified in the March 2005 version of the Local Development Scheme (referred to in this section as 'the Scheme' ), is shown in table 2. The Scheme was approved by this Authority in February 2004. It was submitted to the Secretary of State on 24 March 2005. Government Office confirmed by letter dated 18 May 2005 that the Secretary of State did not intend to issue a Direction.

We have summarised the status of each document in this report in the following Tables 3-12. This table shows that all milestones within the Scheme have been met for the period of 10 October 2004 to 31 March 2005. They also show that all milestones within the period 1 April 2005 – 31 March 2006 are on target and are being completed on schedule. We have therefore not proposed any changes to the Scheme until we complete a review in April 2006. According to a request by Government Office, this review will include a more detailed analysis of the status of Local Plan policies currently retained until the adoption of Local Development Documents within the new Local Development Framework.

### **9.2 Our approach to delivering the new planning system**

The Lake District National Park Authority is both the strategic and local planning authority for the Lake District National Park. Under the old planning system we were required to prepare a Structure Plan providing the strategic context and a Local Plan providing more detailed local policies. Together, these documents formed the Development Plan for the Lake District National Park.

Under the new system, the Structure and Local Plan are replaced by a series of Local Development Documents ( collectively called the Local Development Framework ) prepared by the Lake District National Park Authority. And Regional Planning Guidance is being replaced by a Regional Spatial Strategy, prepared by North West Regional Assembly.

Our approach to the new planning system has been twofold:

1. To create an interim strategic framework until RSS is adopted – through continuing with our review of the Joint Structure Plan; and
2. Embrace the new Local Development Framework system fully - by saving policies from the Local Plan and Joint Structure Plan and allocating our time to creating a brand new range of Local Development Documents with real community engagement.

The Cumbria and Lake District Joint Structure Plan was produced jointly by Cumbria County Council and the Lake District National Park Authority in their roles as the two strategic planning authorities in Cumbria. It provides the strategic planning policy context for the county and the Lake District National Park. A review of the Joint Structure Plan began long before the new system was announced.

It has been important to continue with this review because policies from the Joint Structure Plan will be saved for three years from its proposed date of adoption or until the new Regional Spatial Strategy ( RSS ) is adopted, whichever is sooner. The Regional Spatial

Strategy is not expected to be adopted until September 2007 so the Joint Structure Plan will provide the strategic policy framework until that time.

The Lake District National Park Local Plan, adopted in 1998, will be replaced by the Local Development Framework. Policies from the Lake District National Park Local Plan, which are in conformity with national and regional policy, have been "saved" for a period of three years from the date of commencement of the new system (until September 2007). After that date, these policies will be replaced by policies within the new Local Development Framework. Some policies may need to be saved for a longer period until the suite of LDDs is much further developed.

In terms of meeting national performance standards, the national Best Value Performance Indicator 200 asks two linked questions:

- A. Do you have a development plan that has been adopted in the last 5 years and the end date of which has not expired?
- B. if 'no', are there proposals on deposit for an alteration or replacement, within a published timetable for adopting those alterations or replacement plan within 3 years?

We have continued to review the Joint Structure Plan and the new Joint Structure Plan is expected to be adopted in January 2006 - this means we can answer 'yes' to BVPI part B. Given the fact that the Local Plan is 'saved' until the new core strategy is in place, then in the terms of the BVPI, we could also answer 'yes' to part A.

### 9.3 Recognition of our approach

The Lake District National Park Authority has been chosen to be part of a nationwide study into the new spatial planning system. We have been chosen because we are acknowledged to be fully embracing the new system and we also represent a Planning Authority working within a truly rural environment.

We were also recognised for our approach to really engage communities at the grass roots level by the Countryside Agency. We received a grant, as part of their Positive Planning initiative, to test new ways of de-mystifying planning for the layperson.

We were also successful in gaining central Government support for a proposal to develop community capacity to survey and understand their own needs. This type of work would support the ethos of 'bottom up planning' and speed up the process of decision-making. We have submitted a detailed bid for 'Invest to Save' budget and await the result early in 2006.

### 9.4 Other progress 2004-2005

**Analysis of Community Strategies :-** In accordance with our timetable, during the past 12 months we have spent time re-invigorating our role in Local Strategic Partnerships. In South Lakeland, we co-developed a working group to ensure collaboration between ourselves, District Council and County Council. This will particularly focus on the development of Local Development Frameworks and will build on the existing collaborative work through the LSP Affordable Housing Task Group. We have already ensured consistency between our policy approach on housing to support the need identified in the community strategy. Whilst we have been waiting for changes to take place in Eden LSP, we are also now working closely with West Cumbria LSP. We have formalised our role on task groups and will aim to develop our role and position in tackling issues related to renewable energy and nuclear power.

**Analysis of Parish Plans :-** We have always agreed that Parish Plans are a real way to engage people in planning at the grass roots level. In accordance with our timetable, in November 2005, we formalised our approach by agreeing a protocol of support for Parish Plan groups with Voluntary Action Cumbria, Cumbria County Council, Cumbria Association of Local

Councils and South Lakeland District Council. We have also undertaken a review of all completed Parish Plans which provides clear information about community needs which will support the development of the Local Development Framework from 2006. In January 2006, when we embark on early consultation about the new core strategy within the LDF, we will also be undertaking workshops in association with Voluntary Action Cumbria, which help Parish Plan groups to implement actions in their plans. This may require appropriate links to the Local Development Framework. A copy of our analysis of Parish Plans is available from our Community Development Research Planner.

**Review of Strategic Area Management Plans/ Area Action Plans:-** In 2004, we proposed a review of how the National Park Management Plan was translated into action on the ground through area plans. We also wanted to review how area management plans could complement any Area Action Plans which could form part of the Local Development Framework. In accordance with our timetable, this review was completed with the support of the Countryside Agency and involved consultation with partners and stakeholders. The review resulted in a proposal that we should bring together the review of the Management Plan and the creation of the Local Development Plan in 2006. This will avoid duplication and enable clear Area Management Plans and Action Plans to be identified and created together as appropriate. This will make things clearer to partners and stakeholders alike. This proposal will be presented formally to members of the Authority early in 2006 based on a recommendation by our Development Plan Working Group and National Park Management Plan Working Group. These groups are now already working together. A summary of the review is available from our Policy and Strategy Manager.

**State of the Park Report:** In accordance with our timetable, we established a partnership made up of organisations with a commitment to work together to provide reliable information about the state of the Lake District National Park. Because the National Park is a complex area, we first agreed the key elements which make up the National Park which we would need information about. We agreed that the key elements of the Park would be those 'themes' defined within the current National Park Management Plan.

There are many ways of measuring the state of each of these themes so we agreed to take a very focussed approach. We first looked at a long list of measurements that would provide us with information about each theme. Because the National Park is so diverse, this first list of measurements was endless. We therefore chose from the list, the key measurements that we thought would provide the broadest indication about the state of each theme and changes over time. Annex 1 provides a summary of all the indicators.

Some of these measurements can be calculated from data that is available now. However, because this is our first State of the Park Report, some measurements were agreed as highly important for us to measure in the future, even though we did not have data immediately. A copy of the full report is available from [www.lake-district.gov.uk](http://www.lake-district.gov.uk)

**Table 4: Key milestones within the Local Development Scheme – March 2005 version**

Lake District National Park Local Development Scheme Overall Programme																																									
	2004			2005					2006					2007					2008																						
	S	O	N	D	J	F	M	A	M	J	J	A	S	O	N	D	J	F	M	A	M	J	J	A	S	O	N	D	J	F	M	A	M	J	J	A	S	O	N	D	
<b>Commencement of Act</b>	■																																								
<b>Local Development Scheme</b>	■	■	■	■	■	■	■	■	■	■	■	■	■	■	■	■	■	■	■	■	■	■	■	■	■	■	■	■	■	■	■	■	■	■	■	■	■	■	■	■	■
<b>Statement of Community Involvement</b>																																									
<b>Local Plan</b>	■	■	■	■	■	■	■	■	■	■	■	■	■	■	■	■	■	■	■	■	■	■	■	■	■	■	■	■	■	■	■	■	■	■	■	■	■	■	■	■	■
<b>Joint Structure Plan **</b>																																									
<b>Core Strategy</b>																																									
Minerals and Waste Core Strategy																																									
Proposals map																																									
<b>Development Control Policies</b>																																									
General Development Control Policies																																									
<b>Site Specific Allocations and Policies</b>																																									
Minerals and Waste																																									
Housing																																									
<b>Area Action Plans</b>																																									
Review requirement for Area Action Plans																																									
Develop Area Action Plans if appropriate																																									
<b>Supplementary Planning Documents</b>																																									
Housing Needs Surveys																																									
SPD strategy																																									
Develop SPDs according to strategy																																									
Landscape Character *																																									
Onshore Wind Energy *																																									
<b>Building the evidence base</b>																																									
Analysis of all Community Strategies ***																																									
Monitoring Strategy																																									
Review of Strategic Area Management Plans																																									
State of the Park report																																									
Analysis of Parish Plans																																									
<b>Annual Monitoring Report</b>																																									
<b>Key:</b>																																									
	■	Pre Production and Document Preparation (inc background studies)										■	Submission to SoS					■	Receipt of Inspector's Report																						
	■	Public Consultation					■	Public Examination					■	Publication/Adoption																											
	■	Consideration and Review					■	Saved policies																																	

Notes: \* County wide SPD in partnership with Cumbria County Council  
 \*\* in partnership with Cumbria County Council timetable extended to meet different Committee cycles  
 \*\*\* the National Park includes 4 Community Strategies



**Tables 5 – 14: Current status of development plan documents as described in the Local Development Scheme**

<b>Table 5</b>		<b>CORE STRATEGY</b>	
<b>Description</b>			
Role and context	This is the strategic document setting out the vision, objectives and spatial strategy of the Lake District National Park. It will identify the strategic approach to key subjects such as housing, transport and economy. It will guide development control decision making but not contain specific policies. It will replace strategic elements of the adopted Cumbria and Lake District National Park Joint Structure Plan and the adopted Lake District National Park Local Plan. It will have regard to the Cumbria Local Transport Plan and Community Strategies covering the Lake District National Park.		
Status	Development Plan Document.		
Geographical coverage	Lake District National Park wide		
Conformity	With the Regional Spatial Strategy		
<b>Production</b>			
Lead Team Political and programme management	Community Development Lake District National Park Authority's Development Plan Working Group to advise Policy and Overview Committee and full Authority. Full Lake District National Park Authority resolution required for submission and adoption.		
Resources	Produced internally using existing resources. External input will be required in the form of studies.		
Community and Stakeholder Involvement	Workshops and focus groups will be held prior to publication of the Options Report. These will involve stakeholders (housing, developers, business etc), District Councils and town/parish councils. Local Strategic Partnerships (LSPs) to form key link to community planning.		
<b>Timetable</b>	<b>Proposed</b>	<b>Current status</b>	<b>Comment</b>
Survey Work and Evidence Gathering (pre production)	January 2006 - December 2006	On target	Early consultation workshops have been announced for January 2005, inviting a broad range of stakeholders to discuss the overall vision, issues and options.
Consultation on Preferred Options	January/February 2007	On target	
Submission to SOS Consultation on submitted document	January 2008 February 2008	On target On target	We have developed a clear monitoring strategy which will be delivered from Jan 2006.
Examination before Inspector	June 2008	On target	
Adoption	Jan/Feb 2009	On target	
Monitoring and review	Monitored annually and reviewed every 3 years.	On target	

<b>Table 6</b>		<b>MINERALS AND WASTE CORE STRATEGY</b>	
<b>Description</b>			
Role and context	This is the strategic document setting out the objectives and spatial strategy for minerals and waste development within the Lake District National Park. It will guide development control decision making but not contain specific policies. It will replace strategic elements of the adopted Cumbria and Lake District National Park Joint Structure Plan and the adopted Lake District National Park Local Plan. It will complement the Cumbria Minerals and Waste Core Strategy for areas of the county outside the Lake District National Park.		
Status	Development Plan Document.		
Geographical coverage	Lake District National Park wide		
Conformity	With the RSS		
<b>Production</b>			
Lead Team Political and programme management	Community Development Lake District National Park Authority's Development Plan Working Group to advise full Authority. Full Lake District National Park Authority resolution required for submission and adoption.		
Resources	Produced internally using existing resources. External input will be required in the form of studies.		
Community and Stakeholder Involvement	Workshops and focus groups will be held to publication of the Options Report. These will involve stakeholders (housing, developers, business etc), District Councils and town/parish councils. Local Strategic Partnerships (LSPs) to form key link to community planning.		
<b>Timetable</b>	<b>Proposed</b>	<b>Current status</b>	<b>Comment</b>
Survey Work and Evidence Gathering (pre production)	January 2006 - December 2006	On target	This document is being developed at the same time as the Core Strategy to avoid duplication and save resources.  We are also pursuing the need for joint working with Cumbria County Council who prepare the Minerals and Waste Local Development Framework outside the National Park
Consultation on Preferred Options	January/February 2007	On target	
Submission to SOS	January 2008	On target	
Consultation on submitted document	February 2008	On target	
Examination before Inspector	June 2008	On target	
Adoption	Jan/Feb 2009	On target	
Monitoring and review	Monitored annually and reviewed every 3 years.	On target	

<b>Table 7</b>		<b>JOINT STRUCTURE PLAN</b>	
<b>Description</b>			
Role and context	This is the strategic document setting out the vision, objectives and spatial strategy of the Lake District National Park within the context of Cumbria. As it is part of the old planning system, it will provide the strategic planning framework until the adoption of RSS. It identifies the strategic approach to key subjects such as housing, transport and economy both within the Lake District National Park and in Cumbria as a whole. Its saved policies together with those of the Local Plan will guide development control decision making until the adoption of the new Core Strategy. It will have regard to the Cumbria Local Transport Plan and Community Strategies covering the Lake District National Park.		
Status	Development Plan Document.		
Geographical coverage	Lake District National Park wide		
Conformity	With the Regional Spatial Strategy (RSS),		
<b>Production</b>			
Lead Team	Community Development		
Political and programme management	Lake District National Park Authority's Development Plan Working Group to advise Policy and Overview Committee and full Authority. Full Lake District National Park Authority resolution required for submission and adoption.		
Resources	Produced jointly with Cumbria County Council, using existing resources.		
Community and Stakeholder Involvement	Workshops and focus groups were held over a 5 year prior to publication of the Deposit version. These involved stakeholders (housing, developers, business etc), District Councils and town/parish councils.		
<b>Timetable</b>	<b>Proposed</b>	<b>Current status</b>	<b>Comment</b>
Examination before Inspector Adoption	September/October 2004 March 2006	Completed Ahead of schedule	Panel report was published on 11 January 2005. We have agreed modifications with Cumbria County Council and consulted on those modifications. Adoption is due in January 2006. We also continue to support sub-regional development of the Regional Spatial Strategy.
Monitoring and review	'Saved' for 3 years from adoption or until RSS is adopted whichever is sooner		

<b>Table 8</b>		<b>DEVELOPMENT CONTROL POLICIES (part of Core Strategy)</b>	
<b>Description</b>			
Role and context	This document will be developed at the same time as the Core Strategy but will have individual status which will enable it to be reviewed separately when required. It will contain a limited suite of policies to be used in the determination of planning applications. These will ensure that all new development in the Lake District National Park contributes to achieving the Core Strategy.		
Status	Development Plan Document.		
Geographical coverage	Lake District National Park wide (will exclude site and area specific policies).		
Conformity	With the Core Strategy.		
<b>Production</b>			
Lead Team	Community Development		
Political and programme management	Lake District National Park Authority's Development Plan Working Group to advise Policy and Overview Committee and full Authority. Full Lake District National Park Authority resolution required for submission and adoption.		
Resources	Produced internally using existing resources (see Appendix 1). Specialist input from, in particular, the fields of design, conservation, Development Control and landscape.		
Community and Stakeholder Involvement	Workshops and focus groups will be held prior to publication of the Options Report. These will involve stakeholders (housing, developers, business etc), District Councils and town/parish councils. Local Strategic Partnerships (LSPs) to form key link to community planning along with Parish Planning, Market Towns Initiatives.		
<b>Timetable</b>	<b>Proposed</b>	<b>Current status</b>	<b>Comment</b>
Survey Work and Evidence Gathering (pre production)	January 2006 - December 2006	On target	This document is being developed at the same time as the Core Strategy to avoid duplication and save resources.
Consultation on Preferred Options	January/February 2007	On target	
Submission to SOS	January 2008	On target	
Consultation on submitted document	February 2008	On target	
Examination before Inspector	June 2008	On target	
Adoption	Jan/Feb 2009	On target	
Monitoring and review	Monitored annually and reviewed every 3 years.	On target	

<b>Table 9</b>		<b>MINERALS and WASTE SITE SPECIFIC ALLOCATIONS AND POLICIES</b>		
<b>Description</b>				
Role and context	This document will be developed at the same time as the Core Strategy but will have individual status which will enable it to be reviewed separately when required. It will allocate land for specific uses and include policies for the delivery of the site specific allocations.			
Status	Development Plan Document.			
Geographical coverage	Lake District National Park wide.			
Conformity	With Core Strategy.			
<b>Production</b>				
Lead Team	Community Development			
Political and programme management	Lake District National Park Authority's Development Plan Working Group to advise Policy and Overview Committee and full Authority. Full Lake District National Park Authority resolution required for submission and adoption.			
Resources	Produced in house using existing resources			
Community and Stakeholder Involvement	Workshops and focus groups will be held prior to publication of the Options Report. These will involve stakeholders (housing, developers, business etc), District Councils and town/parish councils. Local Strategic Partnerships (LSPs) to form key link to community planning along with Parish Planning, Market Towns Initiatives.			
<b>Timetable</b>		<b>Proposed</b>	<b>Current status</b>	<b>Comment</b>
Survey Work and Evidence Gathering (pre production)	January 2006 - December 2006	On target	This document is being developed at the same time as the Core Strategy to avoid duplication and save resources.  We are also pursuing the need for joint working with Cumbria County Council who prepare the Minerals and Waste Local Development Framework outside the National Park	
Consultation on Preferred Options	January/February 2007	On target		
Submission to SOS	January 2008	On target		
Consultation on submitted document	February 2008	On target		
Examination before Inspector	June 2008	On target		
Adoption	Jan/Feb 2009	On target		
Monitoring and review	Monitored annually and reviewed every 3 years.	On target		

<b>Table 10</b>		<b>HOUSING SITE SPECIFIC ALLOCATIONS AND POLICIES</b>	
<b>Description</b>			
Role and context	This document will contain policies which apply to specific sites, locations or areas within the National Park. It will also contain allocations to achieve the Core Strategy. It allocates land having regard to principles of sustainability as well as providing the policy framework to meet the housing requirements of the Lake District National Park in accordance with the Joint Structure Plan policies until the Core Strategy is adopted. All policies/allocations to be illustrated on the separate Proposals Map. Replaces housing policies within the adopted Lake District National Park Local Plan.		
Status	Development Plan Document.		
Geographical coverage	Identified areas of the National Park.		
Conformity	With Joint Structure Plan .		
<b>Production</b>			
Lead Team	Community Development		
Political and programme management	Lake District National Park Authority's Development Plan Working Group to advise Policy and Overview Committee and full Authority. Full Lake District National Park Authority resolution required for submission and adoption.		
Resources	Produced internally using existing resources (see Appendix 1). Specialist input will come particularly from those in the fields of Development Control External input will be required in the form of housing needs studies.		
Community and Stakeholder Involvement	Workshops and focus groups will be held prior to publication of the Options Report. These will involve stakeholders (housing associations and developers etc), District Councils and town/parish councils. Local Strategic Partnerships (LSPs) to form key link to community planning along with Parish Planning, Market Towns Initiatives.		
<b>Timetable</b>	<b>Proposed</b>	<b>Current status</b>	<b>Comment</b>
Survey Work and Evidence Gathering (pre production)	July 2005 - June 2006	On target	Much of this work coincided with the development of the SPD on Demonstrating Housing Need which supports the delivery of policy H20 in the emerging Joint Structure Plan.
Consultation on Preferred Options	June/July 2006	On target	
Submission to SOS	July 2007	On target	Housing Needs Surveys have been completed across significant areas of the National Park through involvement of the local community.
Consultation on submitted document	February 2008	On target	
Examination before Inspector	August 2007	On target	
Adoption	June 2008	On target	
Monitoring and review	Monitored annually and reviewed every 3 years	On target	

<b>Table 11</b>		<b>AREA ACTION PLANS</b>		
<b>Description</b>				
Role and context	In 2005 we will determine what Area Action Plans are required within the Lake District National Park. The resulting documents would contain a planning framework for the future development of a particular area within the Lake District National Park. They could include proposals for conservation, land management, environmental enhancement or regeneration.			
Status	Development Plan Document			
Geographical coverage	Identified areas of the Lake District National Park			
Conformity	With Core Strategy			
<b>Production</b>				
Lead Team	Community Development Team			
Political and programme management	Lake District National Park Authority's Development Plan Working Group to advise full Authority. Full Lake District National Park Authority resolution required for submission and adoption of all Area Action Plans when developed			
	Produced internally using existing resources (see Appendix 1).			
Resources	Produced in house using existing resources. Specialist input will come particularly from those in the fields of Management Plans. External input will be required in the form of expertise from Countryside Agency and their research on Area Action Plans.			
Community and Stakeholder Involvement	Local Strategic Partnerships (LSPs) and Market Towns Initiatives to form key link to community planning along with Parish Planning,			
<b>Timetable</b>		<b>Proposed</b>	<b>Current status</b>	<b>Comment</b>
Survey Work and Evidence Gathering Consultation on options for Area Action Plans		2005 September 2005	Completed Completed	See para 9.4 which explains how this work was done in conjunction with a survey on strategic area management plans. The outcome of the review proposed that Area Management Plans and Action Plans could be done together.
Publication of timetable for Area Action Plans		January 2006 with review of LDS	Updated timescale – see comment	Since the original LDS was proposed, guidance has become clearer. To maintain a clear monitoring strategy based on financial year calendar, the review of the LDS will be published in April 2006.

<b>Table 12</b>		<b>PROPOSALS MAP AND INSETS</b>		
<b>Description</b>				
Role and context	This document will contain policies which apply to specific sites, locations or areas within the National Park. It will also contain allocations to achieve the Core Strategy. It allocates land having regard to principles of sustainability as well as providing the policy framework to meet the housing requirements of the Lake District National Park in accordance with the Joint Structure Plan policies until the Core Strategy is adopted. All policies/allocations to be illustrated on the separate Proposals Map. Replaces housing policies within the adopted Lake District National Park Local Plan.			
Status	Development Plan Document.			
Geographical coverage	Identified areas of the National Park.			
Conformity	With Joint Structure Plan .			
<b>Production</b>				
Lead Team	Community Development			
Political and programme management	Lake District National Park Authority's Development Plan Working Group to advise Policy and Overview Committee and full Authority. Full Lake District National Park Authority resolution required for submission and adoption.			
Resources	Produced internally using existing resources (see Appendix 1). Specialist input will come particularly from those in the fields of Development Control External input will be required in the form of housing needs studies.			
Community and Stakeholder Involvement	Workshops and focus groups will be held prior to publication of the Options Report. These will involve stakeholders (housing associations and developers etc), District Councils and town/parish councils. Local Strategic Partnerships (LSPs) to form key link to community planning along with Parish Planning, Market Towns Initiatives.			
<b>Timetable</b>		<b>Proposed</b>	<b>Current status</b>	<b>Comment</b>
Survey Work and Evidence Gathering (pre production)		July 2005 - June 2006	On target	This document is being developed at the same time as the Core Strategy to avoid duplication and save resources.
Consultation on Preferred Options		June/July 2006	On target	
Submission to SOS		July 2007	On target	
Consultation on submitted document		February 2008	On target	
Examination before Inspector		August 2007	On target	
Adoption		June 2008	On target	
Monitoring and review		Monitored annually and reviewed every 3 years	On target	

<b>Table 13</b>		<b>SUPPLEMENTARY PLANNING DOCUMENT : HOUSING NEEDS SURVEYS</b>		
<b>Description</b>				
Role and context	Sets out further detail of policies in the Joint Structure Plan. Will replace current SPG on Housing.			
Status	Supplementary Planning Document			
Geographical coverage	Lake District National Park wide			
Conformity	With Joint Structure Plan and then Core Strategy upon adoption			
<b>Production</b>				
Lead Team	Community Development			
Political and programme management	Lake District National Park Development Plan Working Group to advise Committees and full Authority.			
Resources	Produced internally using existing resources (see Appendix 1).			
Community and Stakeholder Involvement	Standard public consultation and focus groups as set out in the Statement of Community Involvement			
<b>Timetable</b>		<b>Proposed</b>	<b>Current status</b>	<b>Comment</b>
Survey Work and Evidence Gathering (pre production)	January-May 2005	Complete	This organisation is taking steps to improve the way it works to support affordable housing in the National Park – in its role as a planning authority but not a housing authority. The SPD will not work without close working between partners and stakeholders – housing authorities and planning authorities, developers and communities all working together.  The development of the SPD has enabled us to develop stronger partnerships both with Parish Councils, Districts and across the County through the Cumbria Housing Data Collection Group.	
Consultation on draft SPD	June/July/August 2005	Complete – timescale altered to avoid clash with traditional vacation season		
Analysis of representations and responses	September 2005 /February 2006	Complete and ahead of schedule		
Adoption	March 2006	On target		
Monitoring and review	Monitored annually and reviewed every 5 years	On target		

<b>Table 14</b>		<b>STATEMENT OF COMMUNITY INVOLVEMENT</b>		
<b>Description</b>				
Role and context	This document will set out how the Lake District National Park Authority intends to achieve continuous community involvement in the preparation of the Local Development Framework. Community engagement in planning is crucial if we are to work together to achieve the purposes of a National Park. In 2005, we will explore the range of new opportunities with focus groups from the community. We want to spend the time and resources preparing a document which is innovative and understood by key stakeholders.			
Status	Required by the Regulations			
Geographical coverage	Lake District National Park wide			
Conformity	With Core Strategy			
<b>Production</b>				
Lead Team	Community Development			
Political and programme management	Lake District National Park Development Plan Working Group to advise Committees and full Authority.			
Resources	Produced internally using existing resources (see Appendix 1).			
Community and Stakeholder Involvement	Standard public consultation and focus groups as set out in the Statement of Community Involvement			
<b>Timetable</b>		<b>Proposed</b>	<b>Current status</b>	<b>Comment</b>
Survey Work and Evidence Gathering (pre production)	April/May 2005	Complete	The SCI has been the first document which we have developed as part of the new Town and County Planning ( Local Development ) Regulations. Guidance and good practice has emerged during the development of the document so we have learnt and adapted as we go along. We have been pleased with the general positive response we have received about the document. We are committed to engaging with our communities in very different ways. This document provides the starting point and a clear framework.	
Consultation on Preferred Options	June/July 2005	Complete		
Submission to SOS	November 2005	Complete		
Consultation on submitted document	December 2005	Complete		
Examination before Inspector	February 2006 ( if required )	On target		
Adoption	June 2006	On target		
Monitoring and review	Every 3 years	On target		

## Annex 1: Key State of the Park Indicators

Ref	Sub ref	Group indicator and individual indicators
SOP1	SOP1.1	<b>Changes to landscape character</b> Number of changes inconsistent and consistent with defined landscape character
	SOP1.2	Changes in townscape character.
	SOP1.3	Mapping tranquillity including light and noise pollution
	SOP1.4	Changes in vegetation mosaics
SOP2	SOP2.1	<b>Changes due to conservation based management practices</b> Area of woodland managed within the Woodland Grant Scheme
SOP3	SOP3.1	<b>Changes due to recreation</b> Number of fell path erosion scars
SOP4		<b>Changes in distinctive, endangered or indicative species and habitats</b>
	SOP4.1	Measures of the status of selected groups of species from the Cumbria Biodiversity Action Plan
	SOP4.2	Measurement of two habitats from the Cumbria Biodiversity Action Plan.
SOP5	SOP5.1	<b>Changes in Sites of Special Scientific Interest</b> Condition of SSSIs
SOP6	SOP6.1	<b>Changes in water quality</b> Measurements of water quality (still and running)
SOP7		<b>Changes in conservation based farming and land management practices</b>
	SOP7.1	Area and % of the National Park managed in line with conservation objectives including land in the following schemes: ESA, Higher Level Scheme, Entry Level Scheme or Organic Entry Level Scheme agreements.
SOP8		<b>Changes in farming economy</b>
	SOP8.1	Net farm income
	SOP8.2	% farm income from non-farming enterprise and the additional value of produce
SOP9		<b>Changes in structure of farming</b>
	SOP9.1	Number of people living in the National Park
	SOP9.2	Average size of farm and number of farmsteads occupied by farmers
SOP10		<b>Changes in the wealth of historic features</b>
	SOP10.1	Numbers of archaeological/historic environment features
	SOP10.2	Condition of features
SOP11		<b>Changes in the character of settlements</b>
	SOP11.1	Number of changes inconsistent and consistent with defined settlement character
SOP 12		<b>Changes in opportunities for outdoor learning</b>
	SOP 12.1	Range of provision in sample areas and value to the economy
	SOP 12.2	Number and profile of people taking part in outdoor education and the benefits received
SOP13	SOP 13.1	<b>Changes in informal learning opportunities</b> Number and type of people attending events, exhibitions or attractions
SOP14		<b>Changes in accessibility to information and interpretation</b>
	SOP 14.1	Type and availability of information, which promotes understanding about general or a specialist aspects of the National Park, from sample sources.
	SOP 14.2	Number and profile of people accessing information from sample sources.

Ref	Sub ref	Group indicator and individual indicators
<b>SOP15</b>	SOP15.1	<b>Changes in accessibility</b> Total length of public rights of way that meet 'ease of use survey' standards
	SOP15.2	The length of paths that are available for different categories of people with limited mobility
<b>SOP16</b>	SOP16.1	<b>Changes in recreational activities</b> Profile and number of different activities
<b>SOP17</b>		<b>Changes within the tourism economy</b> The economic value of tourism
<b>SOP18</b>	SOP17.2	The numbers of tourism related
	SOP18.1	<b>Changes in the variety of tourist accommodation</b> The types of accommodation available
<b>SOP19</b>	SOP18.2	Accommodation occupancy levels
	SOP19.1	<b>Changes in the impact from tourism</b> The numbers of tourism related businesses contributing to conservation or sustainable development initiatives
<b>SOP20</b>	SOP19.2	The value of contributions from tourism related businesses
	SOP19.3	Residents perception of tourism
<b>SOP21</b>	SOP20.1	<b>Changes in employment</b> Employment and annual income rates by sector
	SOP20.2	The variety of job opportunities
<b>SOP22</b>	SOP21.1	<b>Changes in housing provision</b> Access to affordable housing (ratio of house prices to income)
	SOP21.2	Number of second homes and type of housing affected
<b>SOP23</b>	SOP22.1	<b>Changes in services available and the vibrancy of communities</b> The types of services available in settlements
	SOP22.2	Travel to work patterns
	SOP22.3	School profiles
<b>SOP24</b>	SOP23.1	<b>Changes in use of road</b> Road traffic levels and car parks at key locations
	SOP23.2	Purpose of journeys
<b>SOP25</b>	SOP24.1	<b>Changes in use of public transport</b> Provision and patronage of public transport including ferries
	SOP24.2	Profile of sustainable transport activities including cycling and walk
<b>SOP25</b>	SOP25.1	<b>Changes in route character and safety</b> Changes inconsistent or consistent with a defined rural road character
	SOP25.2	Results from road management studies

## **The Lake District National Park**

This National Park is one of a family of National Parks in the UK. It was created in 1951 and covers some 2,292 square kilometres. Our job is to:

- *conserve and enhance the natural beauty, wildlife and cultural heritage of the National Park; and*
- *promote opportunities for the understanding and enjoyment of its special qualities.*

We also have a duty to:

- *foster the interests of the local community.*

Published, written and edited by the:

Lake District National Park Authority  
Murley Moss  
Oxenholme Road  
Kendal  
Cumbria  
LA9 7RL

Tel: 01539 724555

Fax: 01539 740822

Email: [hq@lake-district.gov.uk](mailto:hq@lake-district.gov.uk)

Website: [www.lake-district.gov.uk](http://www.lake-district.gov.uk)



Text © Lake District  
National Park Authority.

