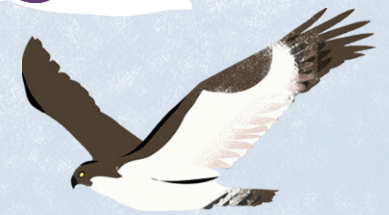




Lake District National Park

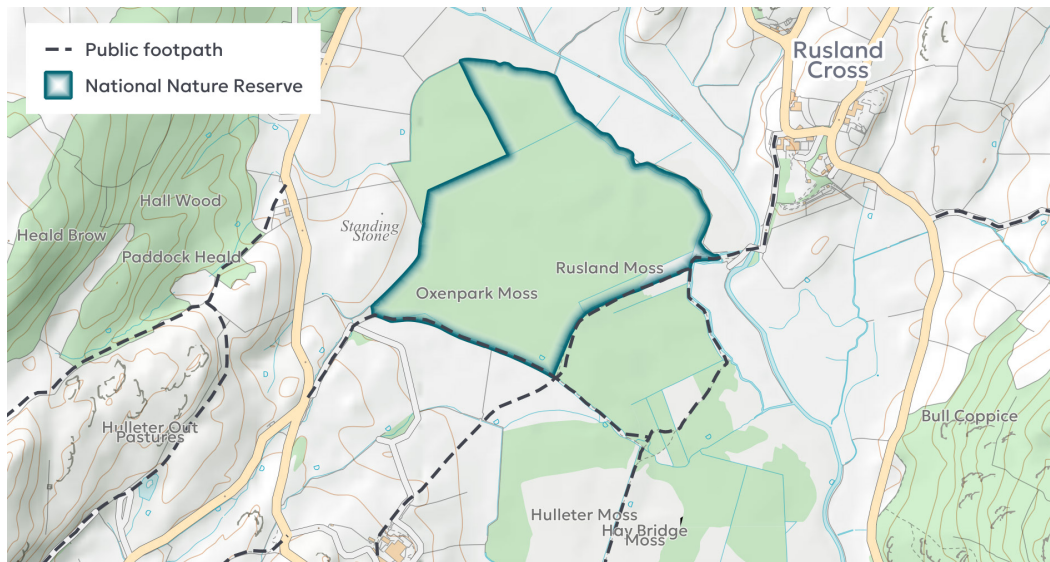
Welcome to Rusland Moss National Nature Reserve



Our ambition:

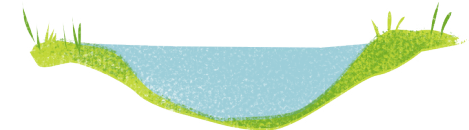
To restore Rusland Moss National Nature Reserve (NNR) raised peatland bog. Lowland raised peatland bogs should be wetter than the surrounding land, as the peat retains the rainwater, stores carbon and helps reduce flooding.

It takes thousands of years to create a lowland raised peat bog. The stages of development are:



© Crown copyright and database right 2025 Ordnance Survey AC0000807483. You are not permitted to copy, sub-licence, distribute or sell any of this data to third parties in any form. National Nature Reserve boundary © Natural England 2025.

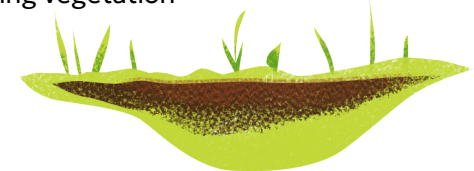
Stage 1 – shallow open lake



Stage 2 – lake margins become vegetated



Stage 3 – lake becomes vegetated and fills with peat forming vegetation



Stage 4 – peat forming vegetation continues to develop



Stage 5 – a low dome of peat forms over the former lake



What makes Rusland Moss NNR special?



It is a Site of Special Scientific Interest



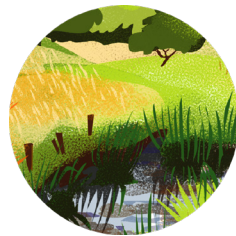
A rare, lowland raised peat bog (mire)



Important bog vegetation



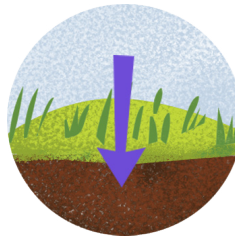
Home to a variety of invertebrates, reptiles and birdlife



The surrounding mosses and network of interconnecting habitats



People visiting and enjoying the natural habitat



Storing carbon

Activities that place pressure on our raised bogs

- Drainage
- Invasive non-native species



For more information visit lakedistrict.gov.uk/ruslandmoss



How are we tackling the issues and managing the NNR for nature and people.

- Removing scrub and felling some trees to help stop the peat drying out
- Controlling and removing non-native species such as rhododendron and skunk cabbage
- Ditch blocking and bunding to wet up peat
- Stabilising collapsed peat faces
- Improving access and on-site information about the area

