

# THE PARTNERSHIP'S PLAN

## THE MANAGEMENT PLAN FOR THE ENGLISH LAKE DISTRICT 2015–2020

A National Park and  
proposed World Heritage Site



Lake District  
National Park  
Partnership



The Lake District National Park Partnership has prepared this Management Plan for the Lake District. There are 25 members of this partnership.

## THE LAKE DISTRICT NATIONAL PARK PARTNERSHIP 2014–2015

---

- |   |   |
|---|---|
| <p>Action with Communities in Cumbria</p> <p>Allerdale Borough Council</p> <p>Copeland Borough Council</p> <p>Country Land and Business Association</p> <p>Cumbria Association of Local Councils</p> <p>Cumbria County Council</p> <p>Cumbria Tourism</p> <p>Cumbria Wildlife Trust</p> <p>Eden District Council</p> <p>Environment Agency</p> <p>Forestry Commission</p> <p>Friends of the Lake District</p> <p>Historic England</p> | <p>Lake District Local Access Forum</p> <p>Lake District National Park Authority</p> <p>Lake District National Park Partnership’s<br/>Business Task Force</p> <p>Local Enterprise Partnership, Cumbria</p> <p>National Farmers’ Union</p> <p>National Trust</p> <p>Natural England</p> <p>Nurture Lakeland</p> <p>Royal Society for the Protection of Birds</p> <p>South Lakeland District Council</p> <p>United Utilities</p> <p>University of Cumbria</p> |
|---|---|



## PREFACE

Securing a place on UNESCO's tentative list for World Heritage Site status recognises the international importance of the English Lake District's cultural landscape. In 2017, we hope that World Heritage Site status will be confirmed.

The Lake District National Park Partnership's formation in 2006 revolutionised how partners began to collectively work together to help manage the Lake District. Now with 25 member organisations and considerable experience it is a real driving force for sustaining and enhancing the Lake District. This Plan, collectively produced by the Partnership combines the management requirements of a National Park and potential World Heritage Site to ensure that we take a single strategic approach that is consistent and appropriate for both designations.

This Plan covers the period 2015-2020 and will ensure the Lake District's Outstanding Universal Value is protected and that we remain on track to achieving our 2030 Vision of the Lake District being "an inspirational example of sustainable development in action". It will be a place where its prosperous economy, world class visitor experiences and vibrant communities come together to sustain the spectacular landscape, its wildlife and cultural heritage.

We believe the Lake District is the defining cultural landscape of its type. Having been first nominated in 1986 as a mixed site and again in 1989 as a cultural site, on both occasions being deferred, the Lake District was used as a test case to define UNESCO's new and additional category 'cultural landscape'. The Lake District's spectacular landscape, its wildlife and cultural heritage can only possibly be sustained and protected if the living working places that have created it – and continue to evolve it – are able to thrive. The strategies outlined in this Plan seek to ensure the Lake District will continue to thrive as a truly living-working landscape, and demonstrates to others how it can be achieved.



**Steve Ratcliffe**

Chairman of the World Heritage Site  
Project Management Group

## CONTENTS

---

1.0 Location of the Lake District, its boundary, and area profile .....	12
2.0 Introduction .....	18
2.1 – The English Lake District’s Outstanding Universal Value .....	24
2.2 – National Park Special Qualities .....	66
2.3 – Being a World Heritage Site and a National Park .....	76
2.4 – The risks and issues affecting the Lake District .....	88
2.5 – Management and the protection of the Lake District .....	98
2.6 – The Partnership’s engagement with others .....	112
2.7 – The Vision for the Lake District .....	116
3.0 The Strategies .....	121
3.1 Spectacular landscape, wildlife and cultural heritage .....	124
Strategy SL1 – A world-class living cultural landscape .....	128
Strategy SL2 – Sustained distinctive and well maintained built and historic environment .....	131
Strategy SL3 – Wise use of geology contributing to local and national needs and demands .....	132
Strategy SL4 – increased resilience to flooding .....	133
Strategy SL5 – improved water quality and resources in lakes, tarns, rivers, ground waters, and sea .....	135
Strategy SL6 – well considered tree and woodland establishment and improvement .....	137
Strategy SL7 – Resilient and well-functioning habitats and wildlife .....	140
Strategy SL8 – The continuation of the Lake District as a source of artistic and cultural inspiration .....	141
3.2 Prosperous economy .....	144
Strategy PE1 – Profitable land management, farming and forestry .....	148
Strategy PE2 – Maintaining traditional land based skills .....	149
Strategy PE3 – Increasing the number of staying visitors .....	154
Strategy PE4 – A year round visitor industry .....	154
Strategy PE5 – Provision of infrastructure – digital infrastructure .....	155
Strategy PE6 – Major industries and provision of infrastructure outside the Lake District .....	156
Strategy PE7 – Reducing energy costs for business .....	156
Strategy PE8 – Availability of land and buildings .....	157
Strategy PE9 – Addressing workforce and skills gaps .....	157
Strategy PE10 – Supporting businesses with advice and access to investment opportunities .....	158
Strategy PE11 – Provision of infrastructure using roads, rail and boats .....	160
Strategy PE12 – Market awareness and promotion .....	160
3.3 A World Class Visitor Experience .....	164
Strategy VE1 – Opportunity for experiences in a unique landscape .....	167

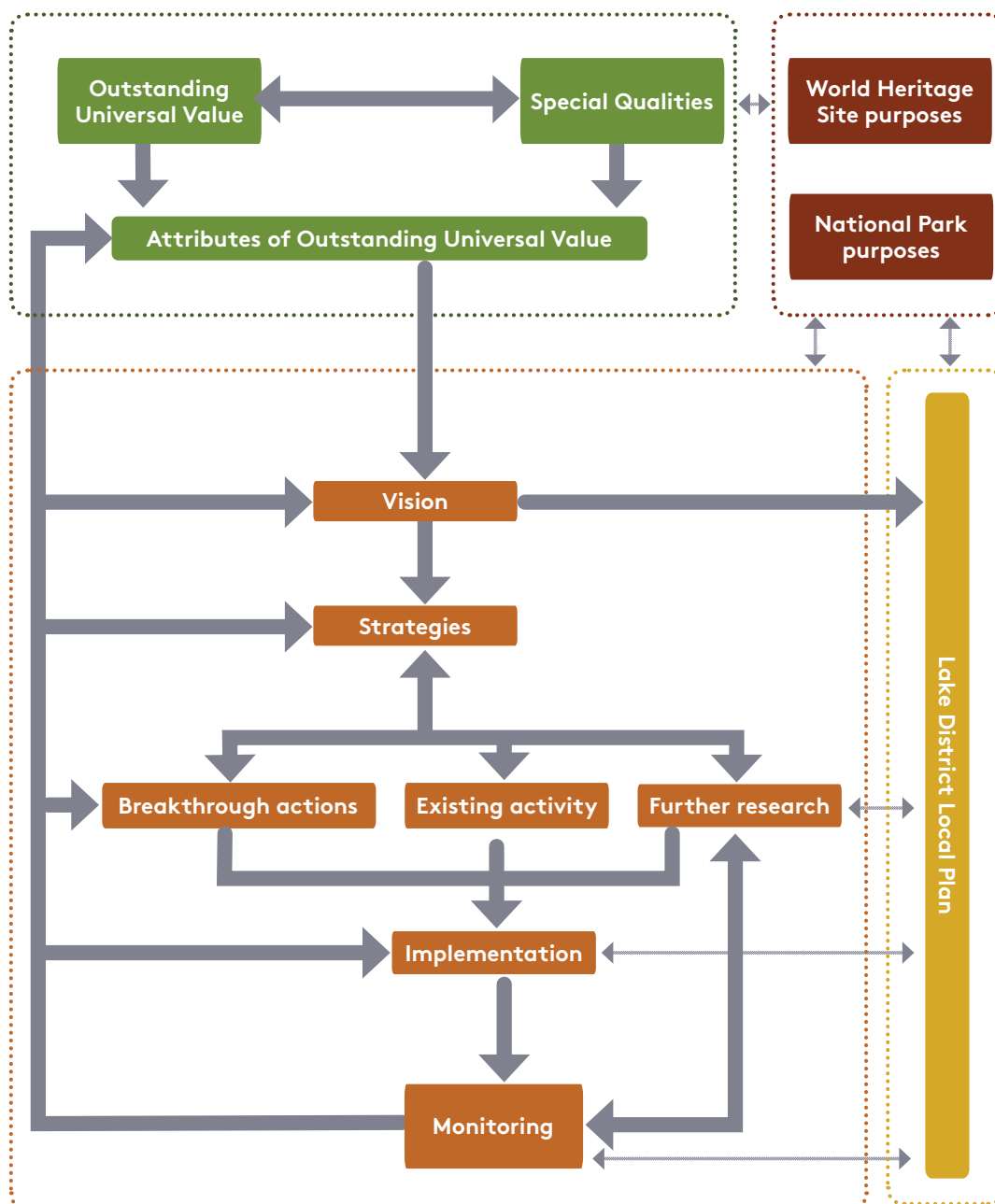
Strategy VE2 – Responsible visiting .....	172
Strategy VE3 – Diversity and availability of high standard accommodation for all budgets .....	173
Strategy VE4 – Distinctive settlement character, quality public realm and amenities .....	174
Strategy VE5 – Available and accessible information for visitors .....	175
Strategy VE6 – Easy access to and within the Lake District, clear and easy orientation and choice of attractive travel options .....	179
3.4 Vibrant Communities .....	188
Strategy VC1 – Pride in and sense of ownership of the local environment and its distinctive character .....	189
Strategy VC2 – Reasonable fuel and energy costs .....	190
Strategy VC3 – Access to services .....	192
Strategy VC4 – Access to a range of employment opportunities .....	193
Strategy VC5 – Availability and supply of a full range of housing types, sizes and tenures to meet local needs .....	195
Strategy VC6 – A high proportion of housing in permanent occupation .....	196
Strategy VC7 – Access to high quality amenity and recreation green spaces, public rights of way, and facilities .....	197
Strategy VC8 – Safe communities and low crime .....	197
4.0 Implementing the Plan .....	199
4.1 Roles and responsibilities .....	202
4.2 Resources for delivery .....	206
5.0 Actions .....	209
5.1 Breakthrough actions .....	212
5.2 'Business as usual' – the partnership's ongoing commitment to managing the Lake District .....	222
6.0 Monitoring the effectiveness of the plan and condition of the Lake District .....	225
6.1 Introduction to monitoring .....	228
6.2 Monitoring Outstanding Universal Value and Special Qualities .....	232
6.3 Vision outcome indicators .....	248
6.4 Frequency of monitoring and reporting .....	260
7.0 A framework for ongoing research .....	263
7.1 A framework for ongoing research .....	266
Appendices .....	269
Appendix 1 - Lake District Special Qualities .....	272
Appendix 2 – Summary of how the Lake District meets the UNESCO categories .....	282
Appendix 3 – Lake District's Integrity and Authenticity .....	292
Appendix 4 – Timetable and key milestones for World Heritage Site inscription .....	302
Appendix 5 – Risk management matrices .....	306
Appendix 6 – Matrix analysis of how strategies protect and enhance Outstanding Universal Value and Special Qualities .....	316
Appendix 7 – The Lake District National Park Partnership Memorandum of Understanding .....	326
Appendix 8 – Equality and Diversity .....	338

Appendix 9 – Sustainability Appraisal and Habitats Regulations Assessment .....	342
Appendix 10 – Relevant Lake District National Park Authority Local Plan policies .....	346
Appendix 11 – Planning policies protecting the Lake District and its setting from neighbouring Local Planning Authorities .....	366
Appendix 12 – Public transport services in the Lake District .....	372
Appendix 13 – Examples of existing partner activity .....	376
List of figures	
Figure 1: Overview of the Plan .....	9
Figure 2: Location of the Lake District .....	12
Figure 3: Extent of the Lake District .....	13
Figure 4: Interesting facts about the Lake District .....	16
Figure 5: The Lake District in numbers .....	17
Figure 6: The lake District's valleys .....	31
Figure 7: Illustration of Langdale and images of key attributes .....	33
Figure 8: Illustration of Windermere north and images of key attributes .....	33
Figure 9: Illustration of Windermere south and images of key attributes .....	36
Figure 10: Illustration of Coniston and images of key attributes .....	39
Figure 11: Illustration of Duddon and images of key attributes .....	41
Figure 12: Illustration of Eskdale and images of key attributes .....	43
Figure 13: Illustration of Wasdale and images of key attributes .....	45
Figure 14: Illustration of Ennerdale and images of key attributes .....	47
Figure 15: Illustration of Buttermere and images of key attributes .....	49
Figure 16: Illustration of Borrowdale and Bassenthwaite north and images of key attributes .....	51
Figure 17: Illustration of Borrowdale and Bassenthwaite south and images of key attributes .....	53
Figure 18: Illustration of Thirlmere and images of key attributes .....	55
Figure 19: Illustration of Ullswater and images of key attributes .....	57
Figure 20: Illustration of Haweswater and images of key attributes .....	59
Figure 21: Illustration of Grasmere, Rydal, Ambleside and images of key attributes .....	61
Figure 22: Summaries of the Lake District's Special Qualities and examples of attributes of Outstanding Universal Value .....	66
Figure 23: Interrelationship of the elements that contribute to the cultural landscape .....	79
Figure 24: Lake District's Distinctive Areas .....	102
Figure 25: Interrelationship of the elements of the Vision .....	117
Figure 26: Facts about the spectacular landscape .....	126
Figure 27: Risks to the landscape and historic environment .....	130
Figure 28: A source of water supply to North West England .....	134
Figure 29: Some of the most important species in the Lake District .....	138
Figure 30: Farming facts about the Lake District .....	146
Figure 31: Benefits of tourism .....	152
Figure 32: Main and secondary travel routes and flows across the Lake District .....	159
Figure 33: Facts about tourism in the Lake District .....	165
Figure 34: Showcase areas .....	170
Figure 35: South and Central and South East Distinctive Area movement map .....	182
Figure 36: West Distinctive Area movement map .....	183
Figure 37: North Distinctive Area movement map .....	184

Figure 38: East Distinctive Area movement map .....	185
Figure 39: Age profile of residents .....	191
Figure 40: Housing and affordability in the Lake District .....	194
Figure 41: Tranquillity of the Lake District .....	244
Figure 42: Geographic spread of farms with fell going flocks .....	245
List of tables	
Table 1: Summary of key attributes of Outstanding Universal Value .....	30
Table 2: Local Government in Cumbria .....	103
Table 3: Key legislation for management and protection of the Lake District .....	104
Table 4: Some of the resources available to the Lake District National Park Partnership .....	206
Table 5: Breakthrough actions .....	214
Table 6: Key abbreviations for breakthrough actions .....	218
Table 7: Special Qualities and Outstanding Universal Value indicators .....	234
Table 8: Vision outcome indicators .....	248
Table 9: Risk matrix for climate change .....	306
Table 10: Risk matrix for reconciling the tension between managing the cultural landscape and enhancing the natural environment .....	307
Table 11: Risk matrix for biodiversity decline .....	308
Table 12: Risk matrix for diseases and pests .....	309
Table 13: Risk matrix for visitor management .....	310
Table 14: Risk matrix for impacts of development .....	311
Table 15: Risk matrix for decline of rural communities and rural isolation .....	312
Table 16: Analysis of how Spectacular Landscape strategies protect and enhance .....	316
Table 17: Analysis of how Prosperous Economy strategies protect and enhance .....	318
Table 18: Analysis of how Visitor Experience strategies protect and enhance .....	320
Table 19: Analysis of how Vibrant Community strategies protect and enhance .....	322
Table 20: Daily public transport services in the Lake District .....	372
Table 21: Examples of existing partner activity .....	376

The Outstanding Universal Value and Special Qualities of the Lake District, informed by World Heritage Site and National Park purposes, are translated into a Vision for the English Lake District. Our Plan identifies strategies, actions, and an implementation and monitoring framework to protect and enhance the Lake District's attributes of Outstanding Universal Value. Figure 1 demonstrates how all these components fit together within this Plan.

**FIGURE 1** Overview of the Plan





A stone wall in the Duddon Valley



# SECTION 1.0

—

Location of the Lake District,  
its boundary, and area profile

# 1.0 LOCATION OF THE LAKE DISTRICT, ITS BOUNDARY, AND AREA PROFILE

---

*i*

## What is a National Park?

National Parks are areas of exceptional natural beauty which benefit from special protection and management, with great opportunities for everyone to enjoy the outdoors.

## What is a World Heritage Site (WHS)?

World Heritage Sites are sites considered to be of Outstanding Universal Value - places or buildings which are considered to have special importance for everyone. They represent the most significant or exceptional examples of the world's cultural and/or natural heritage.

FIGURE 2 The location of the Lake District



The Lake District is a mountainous region of north west England, first designated as a National Park in 1951. The boundary of the Lake District National Park is the proposed boundary of the English Lake District World Heritage Site [This is therefore referred to as the 'Nominated Property Boundary' on figures].

FIGURE 3 Extent of the Lake District boundary



□ Nominated Property boundary

FIGURE 4 Interesting facts about the Lake District

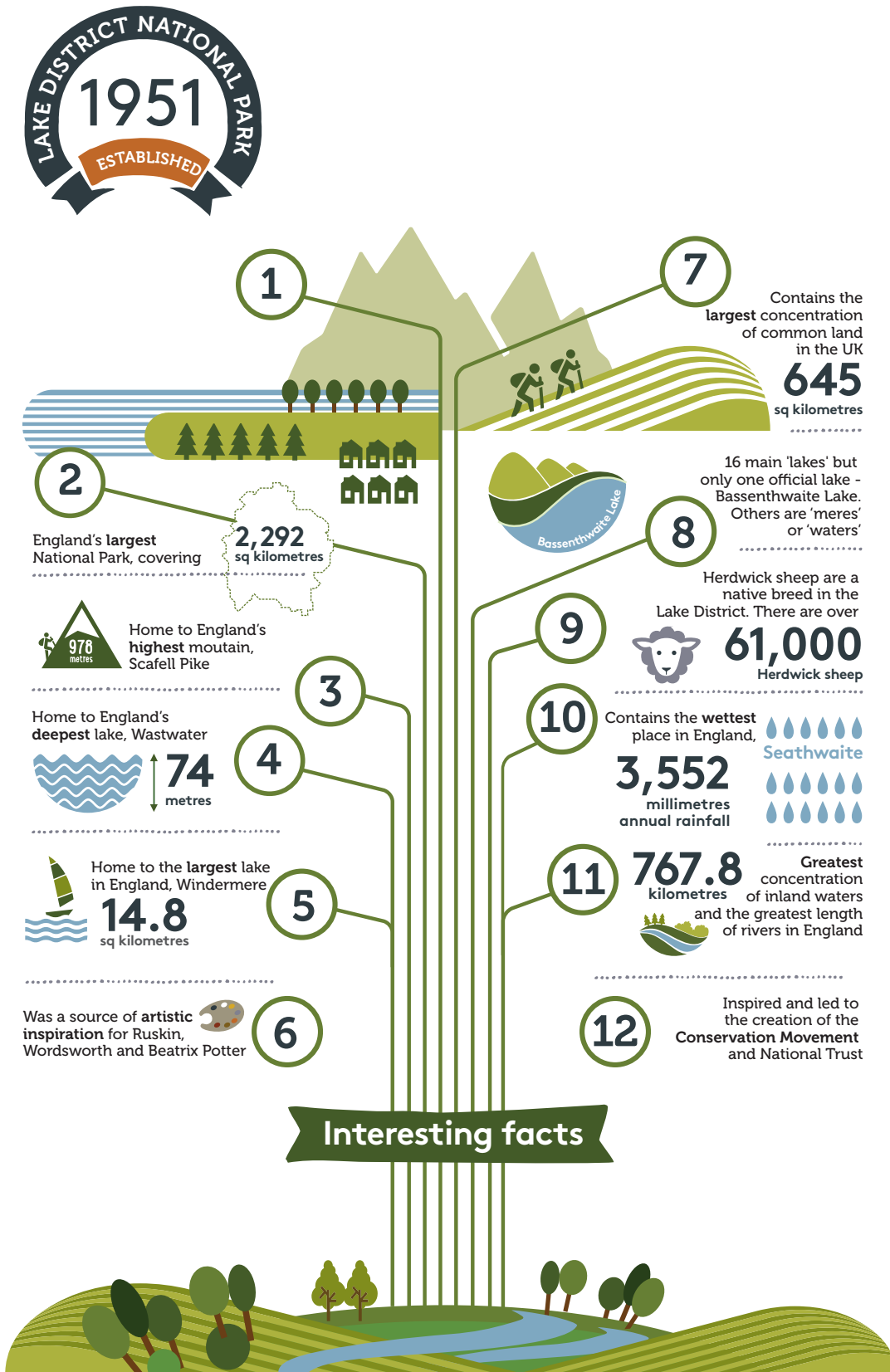


FIGURE 5 The Lake District in numbers

