



Inbye and intake fields at Pye How, Great Langdale



1. LANGDALE

—
Description, History and Development

1. THE LANGDALE VALLEY



“...the loveliest rock scenery, chased with silver waterfalls, that I ever set foot or heart upon... the sweet heather and ferns and star mosses nestled in close to the dashing of the narrow streams...no creature except a lamb or two, to mix any ruder sound or voice with the splash of the innumerable streamlets!”

John Ruskin (1867)

1.1 DESCRIPTION

Langdale, ‘Long Valley’ in Old Norse, is centrally located at the heart of the English Lake District and epitomises many of the attributes and qualities which underpin the case for the Outstanding Universal Value of the English Lake District. It is a classic glacial valley; it has a long and well-documented history of agro-pastoral use, it attracted writers and artists and it played a key role in the development of the conservation movement. See Figure 1.2 for an illustrative map of the valley. Also see Figure 1.3 for an overview of the cultural landscape of the Langdale Valley.



FIGURE 1.1 View of the Langdale Valley showing the inbye fields of the valley bottom and intakes on the valley sides

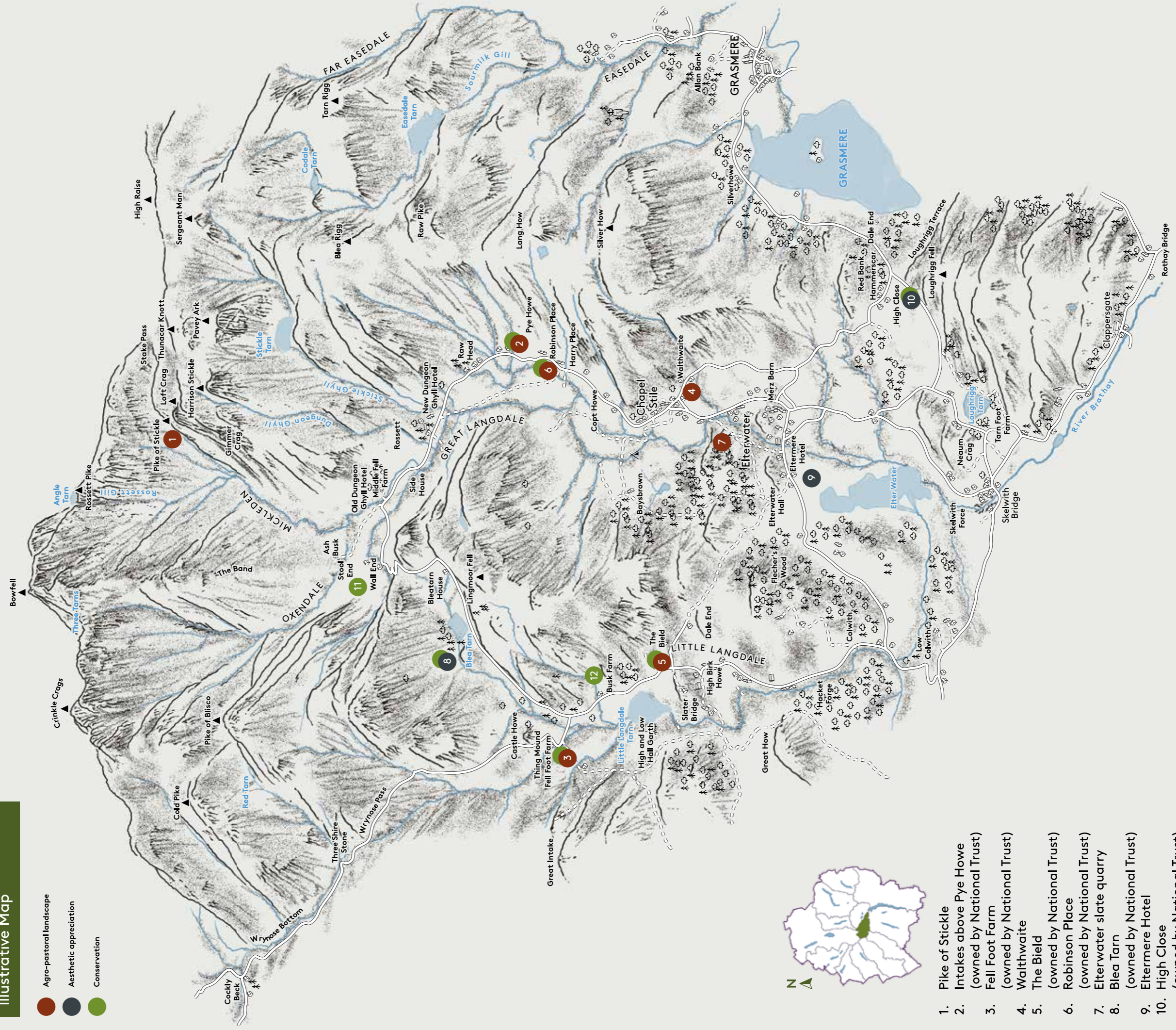
1.1.1 LOCATION, GEOLOGY AND TOPOGRAPHY

It was William Wordsworth who first compared the pattern of ridges and valleys of the Lake District to the spokes of a wheel where the hard, erosion-resistant igneous rocks of the Borrowdale Volcanics Group form the high central hub from which the glaciated valleys radiate outwards in every direction. Langdale runs west to east from these high



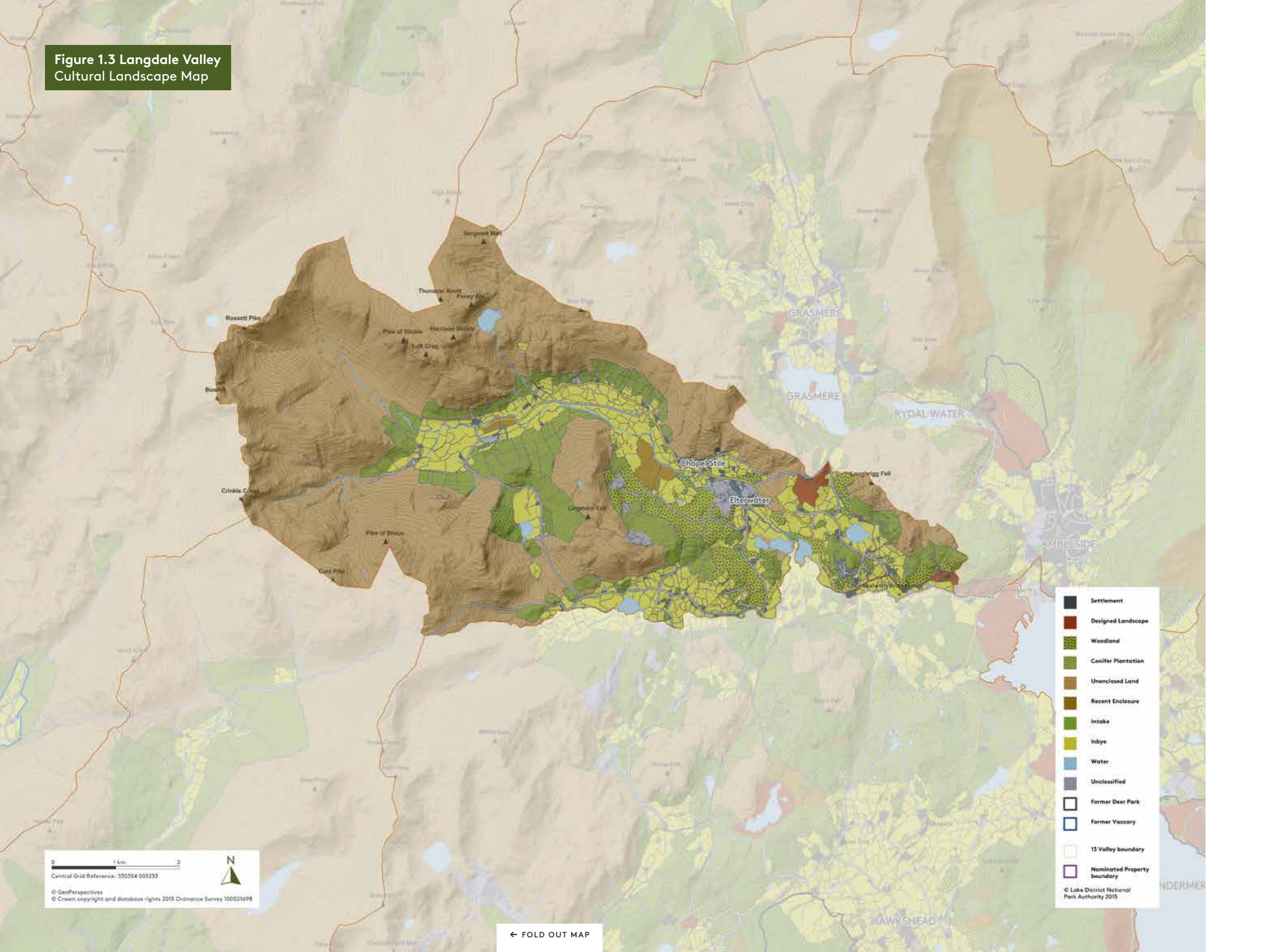
Figure 1.2 Langdale Valley Illustrative Map

- Agro-pastoral landscape
- Aesthetic appreciation
- Conservation



1. Pike of Stickle
2. Intakes above Pye Howe (owned by National Trust)
3. Fell Foot Farm (owned by National Trust)
4. Walthwaite
5. The Bield (owned by National Trust)
6. Robinson Place (owned by National Trust)
7. Elterwater slate quarry
8. Blea Tarn (owned by National Trust)
9. Eltermere Hotel
10. High Close (owned by National Trust)
11. Stool End and Wall End (owned by National Trust)
12. Busk Farm (owned by National Trust)

Figure 1.3 Langdale Valley Cultural Landscape Map



← FOLD OUT MAP

FIGURE 1.4 The contribution of the Langdale Valley to the cultural landscape themes identified

LANGDALE		
THEME	COMPONENTS OF ATTRIBUTES	SIGNIFICANCE
Continuity of traditional agro-pastoralism and local industry in a spectacular mountain landscape	Extraordinary beauty and harmony	
	Evidence of pre-medieval settlement and agriculture	
	Distinctive early field system	
	Medieval buildings (e.g. churches, pele towers and early farmhouses)	None
	16th/17th century farmhouses	
	Herdwick flocks	
	Rough Fell flocks	None
	Swaledale flocks	None
	Common land	
	Shepherds' meets/shows and traditional sports	
	Woodland industries	
	Mining/Quarrying	
	Water-powered industry	
Market towns	None	
Discovery and appreciation of a rich cultural landscape	Viewing stations	None
	Villas	
	Designed landscape	
	Early tourist infrastructure	
	Residences and burial places of significant writers and poets	None
	Key literary associations with landscape	
	Key artistic associations with landscape	
	Key associations with climbing and the outdoor movement	
Opportunities for quiet enjoyment and spiritual refreshment		
Development of a model for protecting cultural landscape	Conservation movement	
	National Trust ownership (inalienable land)	
	National Trust covenanted land	
	Other Protective Trusts and ownership including National Park Authority	

central fells with Bowfell and Crinkle Crag at its head before meeting with the adjoining Grasmere, Rydal and Ambleside valley at the head of Windermere. It is a stunning example of a U-shaped glaciated valley with the typical features of headwalls, corries, glacial tarns, hanging valleys and truncated spurs all well represented. The distinctive skyline of the Langdale Pikes dominates the valley and can be seen for many miles from the south and east. Unusually for a Lake District valley of its size, Langdale does not contain a major lake.

The steep valley sides provide a powerful sense of enclosure and the rough texture of the crags, screes and rock outcrops together with the rough grazing, heather, remnant juniper and extensive bracken beds contrast markedly with the flat, smooth-textured, lush green and strongly patterned valley floor. The managed appearance of the valley is created by the typical features associated with traditional hill farming practice such as the patchwork of irregularly shaped pasture fields enclosed by stone walls, veteran trees and pollards. Riverside trees snaking their way along the meandering Great Langdale Beck, now contained within banks of excavated gravel, further contribute to this effect. The River Brathay flows out of Little Langdale Tarn, into Elter Water and from there to Windermere.

Despite being one of the busier valleys Langdale has a strong sense of tranquillity as a result of the dramatic landform and the perceived naturalness of the high, open, fells. The valley has long-held historic and cultural associations with rock climbing with routes on the steep crags on the north side of the valley being climbed as early as the beginning of the 19th century, routes which are still popular today. The valley is also



FIGURE 1.5 Enclosed land at the head of the valley, framed by the imposing fells of the Langdale Pikes, Rossett Pike and Bow Fell

busy with walkers following paths such as the Langdale Pikes, Bowfell/Crinkle Crag and a route to Scafell Pike amongst many others.

The numbers of people, the three hotels and the campsites in the west part of the valley together with the more numerous accommodation providers in the east do nothing to detract from the abundant natural beauty and sense of remoteness, tranquillity and history which make Langdale such an iconic location.

1.1.2 THE INHERITED LANDSCAPE'S CHARACTER

Settlement in the upper part of the valley is of scattered farms nestling at the foot of the south-facing fells. These are generally small farms of white, rendered and limewashed, vernacular farmhouses with collections of stone shippens (cattle sheds) and barns attached to, or tightly grouped around them. Combined with the characteristic inbye pasture contained within a defined ring garth wall and the prevalence of the distinctive Herdwick sheep this creates a compelling image of Lake District upland farming. Further east and closer to the town of Ambleside the valley is more densely settled as a result of past industries. Elterwater's former gunpowder workers houses, Chapel Stiles'

distinctive, green slate quarrying community terraces and church and Little Langdale's housing loosely grouped around extensive slate quarries convey a strong sense of history. Of the three, only Elterwater gunpowder works has ceased to operate and the slate quarries, whilst smaller in scale, provide a high quality product for domestic and international markets and demonstrate the strong link between the Lake Districts' past, present and future.

1.1.3 FARMING TODAY – THE AGRO-PASTORAL LANDSCAPE

The Langdales are one of the key areas in the Lake District for Herdwick sheep farming and many of the historic farms in both Great and Little Langdale have substantial Herdwick flocks. These include Fell Foot and High Birk Howe in Little Langdale and Middlefell, Stool End, Wall End, Baysbrown, Millbeck, Robinson Place and Harry Place. The majority of these farms are now owned by the National Trust which has ensured the survival of Herdwick farming in this key area.

The Langdales are particularly rich in examples of vernacular farmhouses which were rebuilt in the relatively affluent period of the late 16th and 17th centuries. These include Fell Foot in Little Langdale, Blea Tarn farmhouse, set in grand isolation with a rugged mountain backdrop, and the majority of the farmhouses in Great Langdale.



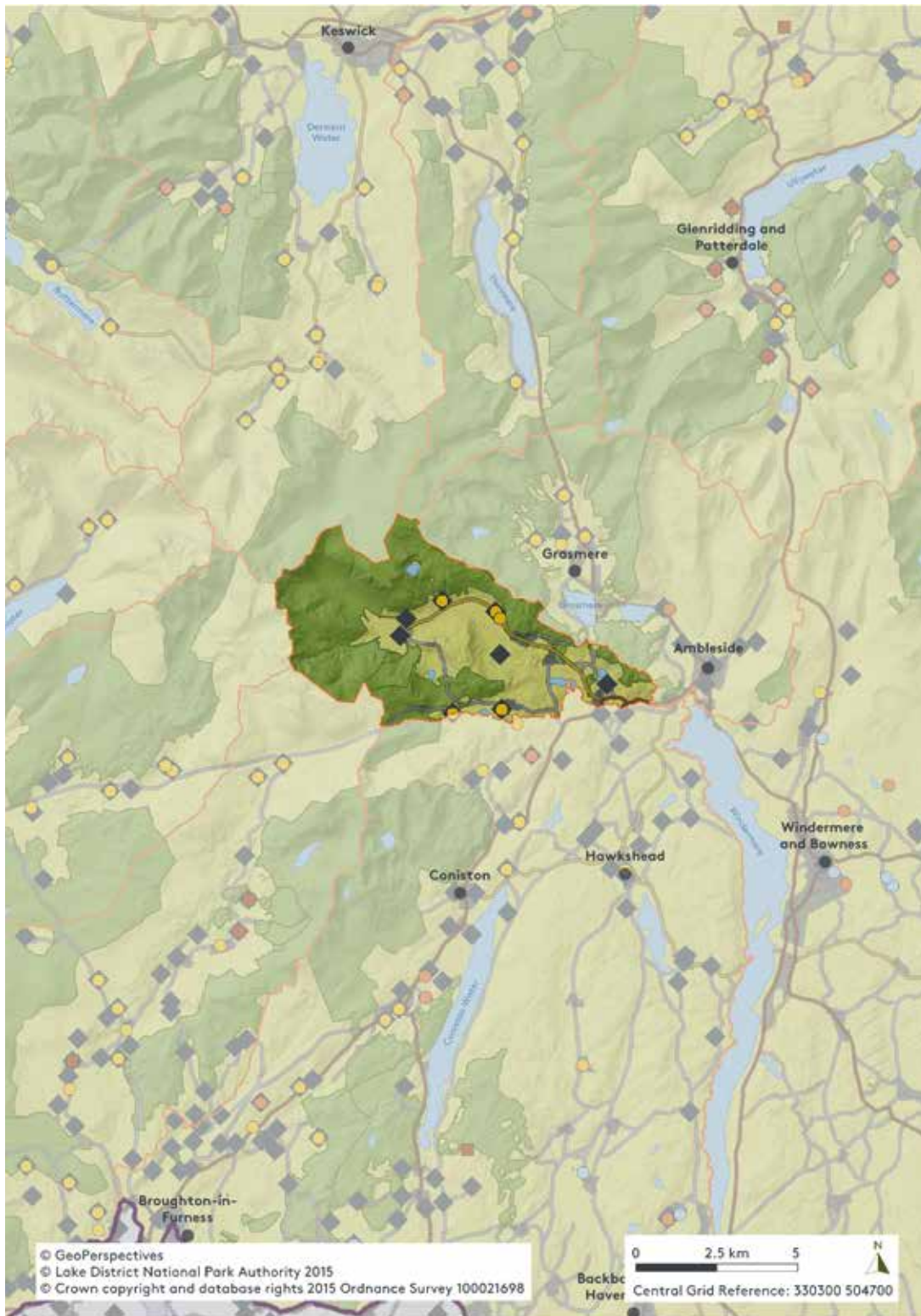
FIGURE 1.6 Herdwicks at Middle Fell Farm in Langdale

WORKING FARMS AND FLOCKS

Eight farms have fell-going flocks in the Langdale Valley. There are five registered Herdwick flocks and no registered Swaledale or Rough Fell flocks. There are nine National Trust Landlord flocks ('Lakeland Shepherds' Guide' 2005).

There are about 2,476 hectares of Registered Common Land in the Langdale Valley, around 59 per cent of the total area. The main areas of common land are Great Langdale Common, Little Langdale Common, Baysbrown Common and small parts of Loughrigg Common and Grasmere Common (Figure 1.7).

FIGURE 1.7 Shepherds' flocks and native sheep breeds in the Langdale Valley




- Nominated Property boundary
- Valley boundary
- Registered Common Land
- ◆ Fell-going Flocks
- Flocks registered with Breed Associations:
 - Herdwick
 - Rough Fell
 - Swaledale
 - Multiple Breeds

Registered Common Land © Natural England 2015. Attribute data for Fell-going flocks: Lakeland Shepherds' Guide 2005. Attribute data for flocks: Herdwick Sheep Breeders Association 2014, Rough Fell and Swaledale Sheep Breeders' Associations 2013.

FARMSTEADS

TABLE 1.1 Key Farmhouses in the Langdale Valley

	<p>WALLTHWAITE, CHAPEL STILE</p> <p>17th century farmhouse, former cottage and barn with many original and 18th century interior and exterior features and details.</p> <p>DATE 17th century OWNERSHIP Private PROTECTION Listed GRID REFERENCE 332389 505569</p>
	<p>RAW HEAD, GREAT LANGDALE</p> <p>Whitewashed 17th century farmhouse with double decker bee boles.</p> <p>DATE 17th century OWNERSHIP Private PROTECTION Listed GRID REFERENCE 330408 506724</p>
	<p>BLEA TARN HOUSE</p> <p>17th century whitewashed farmhouse and attached barn.</p> <p>DATE 17th century OWNERSHIP National Trust PROTECTION Listed GRID REFERENCE 329492 504822</p>
	<p>THE BIELD, LITTLE LANGDALE</p> <p>17th century farmhouse with some original interior features and adjoining 18th century barn.</p> <p>DATE 17th century OWNERSHIP National Trust PROTECTION Listed GRID REFERENCE 331158 503655</p>
	<p>HIGH BIRK HOWE, LITTLE LANGDALE</p> <p>17th century farm house and cottage with circa 1600 core, 17th or 18th century threshing barn and 19th century outbuilding complex.</p> <p>DATE 17th century OWNERSHIP National Trust PROTECTION Listed GRID REFERENCE 331402 503284</p>



FELL FOOT FARM, LITTLE LANGDALE

Set at the foot of Wrynose Pass, substantial early 17th century farmhouse, cruck cottage and barn, owned in the 18th century by Fletcher Fleming of Rydal and was an inn in the 19th century.

DATE 17th century
OWNERSHIP National Trust
PROTECTION Listed
GRID REFERENCE 329892 503198



WALL END FARM, GREAT LANGDALE

There are records of four holdings at Wall End in 1717. The one surviving house is a 17th century house with barns to the north. To the south east a probable 16th century cruck barn.

DATE 16th – 17th century and 18th – 20th century
OWNERSHIP National Trust
PROTECTION Listed
GRID REFERENCE 328304 505534

1.1.4 INDUSTRY

Neolithic stone axe production on the Langdale Pikes is the earliest example of a large-scale use of natural resources for manufacturing tools in North West England. The stone for the axes was quarried for around 1,000 years until 2000 BC, but the presence of axe-quarries and production sites is difficult to discern to the untrained eye.

The industries which have left the greatest mark on the landscape of Langdale are slate quarrying and mining. Some of the largest slate quarries in the Lake District operated in Great Langdale at Elterwater, on either side of the valley at Chapel Stile and on the slopes of Lingmoor Fell. These exploited volcanic slate for roofing and so their products contribute towards the local distinctiveness of the area. The extensive workings and tips of Thrang Quarry dominate the northern backdrop of Chapel Stile. North of the River Brathay at Skelwith Bridge was the works of the Kirkstone Green Slate Company. Elterwater and Spout Cragg Quarry have been working more or less continually using modern methods and are both currently operated by Burlington Slate Limited. The slate quarries still provide a high quality product for domestic and international markets and demonstrate the strong link between past, present and future of the Lake District.

The Elterwater complex of quarries covers a considerable area of the south side of Great Langdale to the west of Elterwater village. The named quarries include Robinsons, Lord's, Owletnest, Peppers, Banks, Colt Howe and Spout Crag along with many other small quarries, levels and trials.

Other industry in the valley has left more discrete evidence in the landscape. Low Wood Mill near Elterwater, is the site of a fulling mill, for beating and cleaning woollen cloth. The remains include a stone-lined head race, a mill pond, wheel pit and platform, and a tail race. Stickle Ghyll Mill is near Millbeck Farm in Great Langdale. The walls of the original mill building have been incorporated into a later stone

sheepfold. Other surviving features include a partially rock-cut head race that led water from Stickle Ghyll to the water wheel, divert channel and tail race.

Iron ore was mined in the 17th and 18th centuries, leaving covered shafts and spoil heaps at Red Tarn, below Pike of Blisco. Mines were also dug at Bowfell, Ore Gap, and Browney Gill. A well-preserved leat and pond, possibly the remains of the forge building in what is now Forge Cottage, and a group of ruined outbuildings nearby, that may well have been part of the forge buildings, are evidence of iron working at Hacket Forge. Copper was also worked at Greenburn and well preserved remains can still be seen at the head of Little Langdale. There is also evidence of charcoal burning and potash kilns in the woodland around Elterwater and there are five or six charcoal pitsteads (platforms) in the intakes between Millbeck and Robinson Place in Great Langdale. The gunpowder works at Elterwater was a significant industry in the valley and its remains are extensive. The works have since been redeveloped as a timeshare holiday complex.

Evidence of peat cutting can be found on Martcrag Moor in the form of straight lines and depressions cut into the peat. The peat was moved on wooden sledges and sledways are still traceable around Troughton Beck, below Martcrag Moor, and above Raw Head to the east of Scale Gill. There are also many derelict peat huts on the north side of the valley. There is a group on Broad Crag, near Scale Gill, two below nearby Raw Pike, and one on Wormal Crag.

1.1.5 SETTLEMENTS



FIGURE 1.8 Holy Trinity Church and Chapel
Stile village

Settlement in the upper part of the valley is of scattered farms nestling at the foot of the south-facing fells. Combined with the characteristic inbye pasture contained within a defined ring garth wall and the prevalence of the distinctive Herdwick sheep, this creates a compelling image of Lake District upland farming. Further east in contrast to the agricultural basis of some of the

hamlets, the two largest settlements in Langdale developed as a result of both industry and tourism. Chapel Stile and Elterwater are close together, on the approach to Great Langdale. Both share a Church and School. Chapel Stile has some early farmsteads, such as Wallthwaite, with good vernacular features. It became a slate quarrying village in the 19th century, hence the quarry workers stone terraces and the Langdale and Neighbourhood Industrial Co-operative Society shop which was established by the slate quarrying industry and gunpowder industry in 1884. The row of houses at the Langdale end of the village, just elevated from the valley road, is perhaps the most unaltered 19th century terrace in the Lake District. Holy Trinity Church dates from the mid-19th century, is built from local green slate and occupies a very dominant position. Elterwater was originally a bridging point over the fast flowing and fast rising Langdale Beck, with a few 17th and 18th century farms near the bridge. Elterwater became an industrial community with the opening of the large gunpowder works in 1824 and from 1883 it was also the

home of the Langdale Linen Industry, supported by John Ruskin. Now this former works is a high-quality, award-winning holiday complex. The original blast-screen woodland forms an important feature on the approach to the Langdale Valley. There are fine listed examples of two stone terraces of houses for gunpowder workers near Maple Tree corner shop. The main entrance to the Elterwater Slate Quarry is near the bridge. Elterwater Hall was the residence of the original owner of gunpowder works. Today, Elterwater is a popular tourist village, yet still within a sheep farming area.

1.1.6 PICTURESQUE BUILDINGS AND LANDSCAPE

There are no significant examples of Picturesque buildings and landscaping in the Langdale valley area.

1.1.7 VILLAS AND ORNAMENTAL LANDSCAPING

There are no early villas in the main valleys of Great Langdale and Little Langdale but there a number of residences of note beyond the main valley.

TABLE 1.2 Key villas in the Langdale Valley



ELTERMERE HOTEL

What is now the Eltermere Hotel was built as Elterwater Hall in 1756 for William Robinson who remodelled an existing 16-17th century property into a more refined country residence.

DATE 16th – 18th century
OWNERSHIP Private
PROTECTION Listed
GRID REFERENCE 332750 504468



HIGH CLOSE

A sprawling Victorian mansion dating from 1857, built for Edward Wheatley-Balme of Mirfield, based around an existing 17th century farmhouse. The garden has views towards Windermere and a three tier arboretum.

DATE 19th century
OWNERSHIP National Trust
PROTECTION Not listed
GRID REFERENCE 333840 505271



BRATHAY HOW, LOUGHRIGG

A large house of around 1913. Pevsner has suggested that it reflects the designs of Voysey and could be by Mawson.

DATE 20th century
OWNERSHIP Private
PROTECTION Not listed
GRID REFERENCE 335863 503707

1.2 HISTORY AND DEVELOPMENT

1.2.1 ARCHAEOLOGY AND EARLY SETTLEMENT

Pollen analysis at Blea Tarn, between Great and Little Langdale, has provided evidence for clearance of woodland in the Neolithic period from around 3000 BC. This sequence of forest disturbance is partly contemporary with the production of stone axes in Great Langdale as demonstrated by radiocarbon dates from recent excavations which indicate a long period of production between at least 4000 BC and 2000 BC (Bradley and Edmonds, 1993). The rock that was used for axe production was a band of fine-grained tuff which forms part of the Borrowdale Volcanic Series and is perfect for the manufacture of axes because of its very hard, yet easily workable nature.



FIGURE 1.9 A detailed section of the rock art at Copt Howe, Chapel Stile, dating from the Neolithic (4000 – 2000 BC)

The Neolithic axe production sites are most numerous in the Great Langdale Valley, particularly in the area of Pike of Stickle and extensive remains survive. Axes produced in the central Lake District were traded or distributed widely throughout the British Isles, with examples found as far afield as Northern Ireland, Scotland and southern England and the axe factories comprise one of the most important prehistoric sites in Britain. It is unlikely that there

existed any permanent settlement in the Langdale Valley at this time. Occupation is likely to have been sporadic and part of some form of summer transhumance, with people travelling in from the surrounding lowlands and coastal areas to quarry stone to make 'rough-outs' that were then taken away for finishing and polishing.

Other important prehistoric remains in Great Langdale include two panels of Neolithic rock art at Copt Howe, near Chapel Stile, located on a pair of large boulders standing on the natural route way into the valley. The decoration consists of a series of concentric circles, along with other abstract designs including parallel lines, arcs, and lozenges. These designs are similar to contemporary rock art in Scotland and Ireland.

The earliest permanent settlement in the valley may have appeared in the Bronze-Age (2000 – 800 BC), a period that saw a wave of colonisation throughout the central Lake District fells. It is possible that the low stone boundaries and earthworks recorded in Mickleden may be the remains of house platforms and field systems established at this time. The climatic deterioration after the Middle Bronze-Age (c. 1200 BC) resulted in many settlements in marginal areas being abandoned and returning to woodland. Other prehistoric sites include a group of stone-built ring cairns at Stickle Tarn dating from the Bronze Age.

The Romans constructed a fort south of Ambleside at Water Head, at the top of the lake of Windermere. This fort was surrounded by a large civilian settlement. The remains of a Roman road linking this with the fort at Hardknott can be traced through Little Langdale and over Wrynose and Hardknott Passes.

1.2.2 THE ORIGINS AND DEVELOPMENT OF THE CURRENT SETTLEMENT PATTERN

There is no further evidence of early settlement or other activity until the 10th century with the arrival of Norse settlers from Ireland. Evidence for their presence in Great Langdale can be seen in the local place-names. The name Baysbrown, a farm at the eastern end of Great Langdale, may be a compound of two Norse words: 'bass' (noun for cowshed) and 'Bruni' (personal name) i.e. Bruni's cowshed. This name could therefore indicate not just settlement but also pastoral agriculture in the form of cattle farming. Rossett, at the head of Great Langdale is a modern derivation of 'saetr', meaning shieling, indicating that a Norse seasonal pastoral settlement here may have become permanent in the medieval period. The undated possible huts and enclosure east of Stickle Tarn could be early medieval. Still further east, by Scale Gill, there are two shieling sites which probably date from the medieval period. The place-name 'Side Gates' connecting Fell Foot in Little Langdale with the ancient enclosures around Blea Tarn is further indication of this transhumant relationship between upland and lowland pasture. This road appears in the 1216 manor of the Baysbrown document (below Section 1.2.3) which records the manor boundary as following 'the road to Little Langden'.

Possible archaeological evidence for the 10th century Norse settlers can be found at Fell Foot Farm in Little Langdale where a rectilinear, terraced mound may be the remains of a Norse 'thing' mound, used for community meetings. Many Great Langdale place-names contain some Norse derivatives: Langdale (the long valley); Kirk How (the meeting place on the hill); and Thrang (narrow road). Many place-names derive from a combination of Old Norse and Old English, such as Oxendale (valley of the ox). The place-name Mickleden (great head of the valley) has been taken to derive from an Old English compound of 'muckel' and 'dene', although Mickle has a wider heritage and is found widely in place-names across Scotland, Northern England and Northern Ireland. Walthwaite contains the common Old Norse suffix for a clearing, '-thwaite'; the prefix 'wall' is most likely to be Old English and suggests the possibility of settlement here. However, the valley area falls outside the geographic scope of the Domesday Book and so it is not possible to identify any potential pre-Norman settlements.

1.2.3 THE DEVELOPMENT OF THE FARMING LANDSCAPE

A fuller discussion of the development of the farming landscape in Great Langdale can be found in the case study in Section 2.b of Volume 1.

11TH TO 15TH CENTURIES

The first documentary evidence for land use in Great Langdale dates from 1216 when William de Lancaster, Baron of Kendal, granted to Conishead Priory the 'land of Basebrun', which then became a separate manor from the Manor of Great Langdale. The course of the boundary wall of the new manor was described in detail in the grant document and can still be identified on the ground today. The grant of 1216 also included a reference to the "inclosed land of Great Langden", which indicated the existence of a wall built to enclose the valley floor which was known as the ring garth. The ring garth separated the tenanted farmland on the valley floor, which was cultivated in strips as an open field, from the manorial waste on the fell sides. It served as both a legal boundary and a physical boundary to prevent stock trampling the crops growing in the valley bottom. There is evidence that the ring garth was still fulfilling its function in 1738 when rental was collected from "... the several persons who put cattle on the common on the outside of the Ring Garth...". It is likely that in some form at least, the ring garth pre-dated the manor boundary of Baysbrown. Its course can still be traced in the present pattern of stone walls in the valley, but subsequent reorganisation of the field system means that there is little evidence on the ground of the strip fields which would indicate the presence of the town field. Towards the end of the medieval period a small number of intakes were constructed on the outer edge of the ring garth, but intaking was minimal until the end of the 15th century when a rising population increased demands on land.

In addition to Baysbrown and Rossett farms, which may have had their origins in early medieval times, the place-name and field system evidence indicates the establishment of four additional farmsteads in the valley during the medieval period, possibly as early as the 12th or 13th centuries. These comprise Middle Fell Place, Robinson Place, Harry Place, and Johnson Place. It is thought that farms whose names end in the word 'Place' were established as encroachments or assarts into areas of 'forest' legalised in the Barony of Kendal in 1190. These farms may therefore have been established shortly afterwards, although Middle Fell Place is implied by the appearance of a 'Charles de Mithelfell' in later documents of 1332.

The same 1216 grant to Conishead Priory of the manor of Basebrun records a hay meadow between Wall End Farm and Great Langdale Beck, hedges, and corralling of cattle on farmland. A meadow would have required clearance of stone for cultivation, and this must have occurred no later than 1216. Although the Priory of Conishead took possession of the manor of Baysbrowne there is little physical evidence of their influence on the ground today. The single large enclosure around Blea Tarn may perhaps comprise a small monastic stock enclosure.

In addition to the 1216 reference to the "inclosed land of Great Langden", later documents refer to individual ownership of waste amongst the tenants, and to failed tenancies. For example, in 1283 Ralph de Berburn held 40 acres of waste, which presumably was marked or otherwise enclosed at some point. In the same year a post-mortem inquest showed that in addition to 15 tenants holding 136 acres between them (presumably within the old ring garth around the inbye), there were another six tenants who held 28½ acres of waste land. The same document refers to two cotters who previously rendered eight pence yearly but whose tenements "are now waste and

yield nothing". The two tenements which had returned to waste in 1283 may be the same as the pair which are recorded as defaulting on payments and having gone to waste in another post-mortem inquest of 1324.

In 1375 a rental made at Staveley recorded the tenants at will in Langden and their tenements. The account includes references to three 'intacks'; two worth one penny and one worth two pence annually, in addition to a pasture called 'Whelpestrothe' worth five shillings. A second rental of 1390-94 records 'half a garden' worth a penny and a half, an intake worth two pence, and 'Quelpstrothe' worth five shillings again. By itself this might suggest that at the close of the 14th century the area extended by manorial enclosure was generally modest, or that it took in poor-quality land, bar the enigmatic Whelpestrothe.

16TH AND 17TH CENTURIES

A survey of the land conducted by the Earl of Cumberland in 1573 recorded ten farms in the valley, which is probably a very good reflection of the situation at the close of the medieval period. These ten were Wall End, Side House, Ash Busk, Rossett, Whitegill, Thompson, Bowderston, Pye Howe, Robinson's [Place] and Thrang. Ash Busk, Whitegill and Bowderston now survive only as archaeological features visible amongst stone walls. Outgangs (walled trackways) were left between some intakes to provide access on to the communally-grazed fell. Substantial intakes of the Elizabethan period (16th century) can still be seen on the slopes around Mickleden. The place-name Wall End probably preserves the extent of the Baysbrowne manor boundary, although it could refer to an upper limit to the land within the ring garth. Stool End and Wall End at the western end of Langdale may represent a roughly-contemporary extension of settlement westward to the then-limits of enclosed inbye land. Both of these seem to post-date the Middlefell 'colony', thought to date from the late 12th or 13th century.

The common field within the ring garth, which had been farmed in strips since the medieval period, was gradually enclosed from the late 16th to the 18th century, and during this time the ten farms recorded in 1573 gradually reduced in number as tenements were reorganised to create larger farms. Many buildings were left empty and eventually ruinous, a phenomenon seen as early as the 14th century. This period also saw the majority of building stock replaced in the local stone which gives the Lake District vernacular architecture its distinctive character. In Great Langdale, those farms not recorded by 1573/74 (Stool End, Middle Fell Place, Millbeck and Harry Place) all appeared subsequently in documents dating to the 17th century. The occupied farmhouses in National Trust ownership in Great Langdale (as well as Hellsgarth, Sidehouse and Robin Ghyll) were built in or incorporate stonework of the 17th century. Only Robinson Place can be dated more specifically to c. 1692. Vernacular farmhouses which were rebuilt on earlier sites during the late 16th and 17th centuries include Fell Foot in Little Langdale and Blea Tarn Farmhouse. Many farms in use during this period survive today, including buildings at Wall End dated to 1613-1616. Further structures of the 16th and 17th centuries which have survived include a series of small, single-span packhorse bridges, including the well-known example of Slater's Bridge in Little Langdale.

From the late 16th century, the period of the 'Statesmen', further substantial stone walled intakes were added to the outer edge of the ring garth. For example, the Robinson Place intakes can all be dated to before 1691 from a document of that year. This lists the intake

at the top of the group, Wormall Crag, which must post-date the others further down the slope. This group of intakes therefore demonstrates development of the field system in Great Langdale from the medieval period to the late 17th century. There are also examples of considerable intake enclosure extending across the lower slopes of Lingmoor Fell, Loughrigg Fell and Side Pike. The Lingmoor Fell intakes seem to have become managed woodland, perhaps from an early date, possibly associated with the forges and supplying other woodland industries. This connection may have been inherited from the monastic management of the Baysbrowne manor in the medieval period.

Enclosure of common pasture on the lower slopes seemed to concentrate on geographically-defined open fell areas to which farms had acquired traditional rights. These rights had developed out of medieval grazing rights on the common manorial wastes. Tradition had come to accept that farmers grazed their cattle on specific areas close to the farmhouse instead of on the common generally, similar to the 'heafing' of sheep. While there is no documentary evidence for the enclosure of cow pastures in Great Langdale there are some intakes which are typical of this pattern: Oxendale Intakes at Stool End; the four intakes west of Middle Fell Place, intakes between Middle Fell Place and Millbeck, and some of the intakes at Robinson Place, closer to the farms.

Iron working in the area is most clearly evidenced at Hacket Forge. William Wright converted two fulling mills on the River Brathay to a bloomery forge sometime between 1623 and 1630. An indication of the importance of water at the time was that Joseph Pennington, the Lord of the Manor, stipulated in the lease for water rights to William Wright that the forge should not be detrimental to other industries that used the river. The lease mentioned these other interests to include a corn mill, other mills and fishing. Documentary evidence and the building of Forge Cottage as a dwelling suggest that it ceased to be an iron forge in the mid-18th century.

18TH AND 19TH CENTURIES

By the first half of the 18th century, tenements had been amalgamated and reorganised as larger units. Wall End, Robinson Place and Robin Ghyll were extended during the 18th century when most of the 'Statesman' outbuildings were constructed. Edward Benson of Millbeck's acquisition of Whitegill in 1734 led to the farmstead there being abandoned and ruinous by the late 18th century when a hogghouse, standing today, was built on the site. Another abandoned farmstead at Borderstone only survived until 1726 at the latest – the remains of the farmstead comprise two building platforms and three sides of a barn fossilised in a field wall. At Stool End the four 17th century tenements had become two by 1760, one of which acquired the neighbouring Ash Busk which survives only as archaeological features visible amongst stone walls.

The Lord of the Manor tried to trace the line of the ring garth at the turn of the 18th century to distinguish inbye from intake so as to claim the correct rents. This task was difficult even then as the inhabitants were not entirely sure where it was.

Great Langdale contains two episodes of planned recent enclosure, and an Act of Parliament of 1836 eventually saw the last few areas of the common field enclosed with the ruler-straight stone walls characteristic of this period. There are a few examples of these in the valley bottom in Great Langdale.

1.2.4 DISCOVERY AND APPRECIATION OF A RICH CULTURAL LANDSCAPE

EARLY TOURISM

Langdale's introduction to tourism was relatively late and from the start focussed on the attractions of rock climbing. It was one of the few places not to feature in Thomas West's 'Guide to the Lakes'. Farmers' families acted as mountain guides for visitors from at least the late 18th century, when Paul Postlethwaite, aged 15, of Middlefell Place guided the writer Captain Budworth up the Langdale Pikes. Many of the old mountain passes started to be used as tourist trails, for example W. Green in his 1819 'New Tourist Guide' advised readers to walk up Stake Pass first if heading to Angle Tarn. He also referred to Fell Foot Farm in Little Langdale having once been an Inn "of great accommodation to men, horses and gangs of horses". It would have been the last or first stopping place either before travelling over Wrynose and Hardknott Passes or arriving after travelling over them. Old Dungeon Ghyll and New Dungeon Ghyll were farmhouses converted into hotels during the mid-19th century. Similarly, a 17th century farmhouse was converted into The Britannia Inn at Elterwater in the 19th century.

1.2.5 ROMANTIC SITES, BUILDINGS AND ASSOCIATIONS



FIGURE 1.10 The Langdale Pikes photographed from the shore of Blea Tarn

The valley did inspire the poems and writings of a number of Romantic poets. Blea Tarn, separating Great and Little Langdales was the setting for Books II and III of Wordsworth's poem 'The Excursion' (1814). It represented an ultimate unity between man and nature contrasting with the wilderness of Lingmoor Fell above which the narrator of poem travelled through:

**“A quiet treeless nook, with two green fields,
A liquid pool that glittered in the sun,
And one bare Dwelling; one Abode, no more!”**

William Wordsworth, ‘The Excursion’ (1814)

In Great Langdale, Dungeon Ghyll Force was the location for Wordsworth’s pastoral poem, ‘The Idle-Shepherd Boys’. It was to Great Langdale that George and Sarah Green walked from Far Easedale in 1808, dying in the vicinity of Eagle Crag and Millbeck, and leaving eight orphaned children. Dorothy Wordsworth’s ‘Narrative Concerning George and Sarah Green’ is a sensitive but stark revelation of the way in which the poverty of subsistence farmers in the Lake District was masked by their apparent independence as land-owners.

In his text for the Reverend Joseph Wilkinson’s ‘Select Views’ (1810), Wordsworth identified Great Langdale as a “must visit” valley:

“Next comes Great Langdale, a Vale which should on no account be missed by him who has a true enjoyment of grand separate Forms composing a sublime Unity, austere but reconciled and rendered attractive to the affections by the deep serenity that is spread over every thing.”

William Wordsworth, ‘Prose II’ (1810)

Loughrigg Tarn was a favourite place of Wordsworth’s, who described it in his little-known ‘Epistle to Sir George Howland Beaumont’ (1811):

**“Thus gladdened from our own dear Vale we pass
And soon approach Diana’s Looking-glass!
To Loughrigg-tarn, round, clear and bright as heaven,
Such name Italian fancy would have given...
The encircling region vividly exprest
Within the mirror’s depth, a world at rest –
Sky streaked with purple, grove and craggy bield,
And the smooth green of many a pedant field,
And, quieted and soothed, a torrent small,
A little daring would-be waterfall,
One chimney smoking and its azure wreath,
Associate all in the calm pool beneath,
With here and there a faint imperfect gleam
Of water-lilies veiled in misty steam.”**

Langdale was also the location for a linen industry, supported and encouraged by John Ruskin. When Albert Fleming, a solicitor from Hertfordshire, moved to Neaum Crag in Langdale in 1880, he and Ruskin became friends. Fleming’s anti-industrial and philanthropic values led him to learn and then teach and promote the uptake of spinning of flax for the production of linen in the Langdale valley. He identified the potential due

to the relative decline of the agricultural economy and as a way to give work, skills and income to the female population of the valley while retaining spinning as a rural craft skill to counter the urbanising effect of industrialisation. He started this enterprise in 1883 with the support of Ruskin who was also concerned for the sustainability of the traditional way of life of the farming communities. The cottage, called St Martin's, at Elterwater became the headquarters of the 'industry' where spinning was taught. Linen thread was spun by many women and then woven into linen and embroidered into fashionable household items for the growing Victorian middle classes. Fleming worked on this enterprise with Marion Twelves, who he had employed as his housekeeper at Neaum Crag. She complemented Fleming with the practical arrangements of the enterprise. In 1899 Marion Twelves moved up to Keswick to promote the spinning industry to that area. Elizabeth Pepper was also instrumental in the management and success of the linen industry in Langdale in the 1890s. She became the manager of the enterprise. In its heyday 80 female spinners were employed and several male weavers. The industry came to an end in the early 1920s, largely due to its abandonment during the First World War. Other work, including farming, took priority for the women with most of the men at war.

Elterwater quarries continued working from the 18th century and is still the largest slate working complex in what was the old county of Westmorland. From 1894 to 1904 the Elterwater quarries produced about 2,000 tonnes of slate each year.

Literary and cultural associations continued into the 20th century when the artist Kurt Schwitters, established the Merz Barn, his workshop and fourth and last Merzbau project, in Cylinders Wood, Elterwater. After Schwitters' death the contents were taken to the Hatton Gallery in Newcastle.

The first poem ever written by W. H. Auden was about Blea Tarn in 1922. Sadly the manuscript was lost but it ended

**“...and in the quiet
Oblivion of the water let them stay.”**

The valley continued to attract people who enjoyed the great outdoors and rock climbers in particular. The Reverend Thomas Arthur Leonard (1864-1948) founded the Co-operative Holiday Association (CHA) in 1893 and the Holiday Fellowship in 1913.



FIGURE 1.11 The Holiday Fellowship centre at Wall End Farm, Great Langdale, c. 1926, now demolished

He wanted to offer outdoor holidays to the workers of the large industrial cities of the Midlands and the North of England. He was described following his death in 1948 as the Father of the open air holiday movement. The Holiday Fellowship established a mountain centre at Wall End Farm, Great Langdale in 1926. Wall End Farm epitomised Leonard's vision of simple and strenuous accommodation and his philosophy of communal and collective responsibility.

Catering to the growing rock climbing and fell walking market, the Elterwater Hostel first opened as a youth hostel in 1939. The Achille Ratti Climbing Club was founded by Bishop T. B. Pearson in 1940 and named after Monsignor Achille Ratti, a parish priest in Northern Italy who was an accomplished climber. The headquarters and the largest climbing hut of the club is at Bishop's Scale, a converted large Bank Barn, near Raw Head Farm in Great Langdale; the club chapel, another barn conversion stands nearby.

1.2.6 EARLY CONSERVATION – THE DEVELOPMENT OF A MODEL FOR PROTECTING LANDSCAPES

Langdale has not been threatened by many of the large infrastructure projects which were proposed for other valleys, but its special qualities were still recognised and inspired moves to protect it. In the first half of the 20th century a movement began amongst wealthy individuals with a concern for the maintenance of the Lake District's cultural landscape and traditions, to purchase key farms in order to conserve them and their tenants' way of life. This development was particularly effective in Langdale and eventually formed the basis for the National Trust's substantial land ownership in this area.

The prime mover in this was Dr G. M. Trevelyan (1876-1962), Regius Professor of Modern History and Master of Trinity College Cambridge. Trevelyan had a strong personal affection for the area and fully signed up to Wordsworth's vision of the Lake District as 'a sort of national property'. Trevelyan bought Robin Ghyll in Great Langdale as a family holiday home before the First World War and continued to spend holidays in Great Langdale in the inter-war period. In 1929 Trevelyan purchased Stool End and Wall End farms and the Dungeon Ghyll Hotel (and farm) in Great Langdale in order to donate them to the National Trust. Trevelyan's purchase of these farms was in part prompted by



FIGURE 1.12 Millbeck Farm, Great Langdale

the Holiday Fellowship's proposal to build a hut encampment in the uninhabited valley of Mickleden at the head of Great Langdale. In 1944 he passed on to the National Trust New Dungeon Ghyll, Harry Place and Millbeck Farms. Between 1928 and 1949 Trevelyan was chairman of the National Trust Estates Committee and he encouraged others to follow his example. The National Trust itself bought Middle Fell in 1938, High Birk Howe in 1948 and Fell Foot in 1957. Side House Farm was given to the National Trust in memory of Trevelyan in 1963 and Robinson Place was bought by the National Trust in 1974. It was largely due to Trevelyan's influence that the majority of both Great and Little Langdale ended up in National Trust ownership.

Trevelyan became the first President of the Youth Hostel Association in 1930, a position he held until 1950; he is buried at Holy Trinity Church in Chapel Stile.

The most famous personality involved in the purchase and protection of farms which were later donated to the National Trust was Beatrix Potter. Farms and property in the area bought by Potter and her husband William Heelis and donated, after her death, in the Heelis Bequest to the National Trust, in 1944 included Busk Farm in Little Langdale, Dale Head Farm between Little Langdale and Elterwater and Fletcher Wood, Elterwater. As a result of the Heelis and Trevelyan bequests and other donations and purchases, the National Trust farm holdings in the Langdale area are very substantial and form the core of the Trust's Lake District Estate. The National Trust also took on the management of Great Langdale Common, Little Langdale Common and Loughrigg Common in 1961 under a lease at the request of the 7th Earl of Lonsdale. The Trust had staff on the ground who could help resolve some of the major issues of the time such as fly camping and parking on the Commons. The Lowther Estate Trust took the Commons back in hand in 2011. Now the National Trust own 961 hectares of land in the valley, of which 955 hectares is inalienable. They do not have any leased land but do have an additional 92 hectares of covenanted land.

1.3 CONTRIBUTION TO THE ENGLISH LAKE DISTRICT'S OUTSTANDING UNIVERSAL VALUE

The Langdale Valley lies at the heart of the English Lake District and epitomises many of the qualities and attributes which underpin the case for Outstanding Universal Value. The distribution of attributes of the first theme, agro-pastoral farming, is highly significant. The narrowness of the valley, the result of glacial movement, has resulted in a particularly distinctive pattern of inbye fields in the valley bottom, subdivided from an original open, medieval field, and surrounded by a ring garth wall dating back to 1216. Small walled intakes on the steep valley sides developed organically over several centuries. The valley contains a number of early farms, many of whose buildings date from the 17th century. It is an important valley for Herdwick flocks and over half of the area of the valley is high fell grazing which is also Common Land. It also has important evidence of early settlement, including Neolithic axe factories, and of later industrialisation.

Although the Langdale Valley lies just to the west of Windermere and Grasmere, its lack of a lake to contrast with and reflect the surrounding fells restricted the interest of early visitors seeking Picturesque views. There is consequently very little villa development in the valley. The landscape of the valley did, however, interest writers and artists including William Wordsworth who used the setting of Blea Tarn, between Great and Little Langdale, as the setting for part of 'The Excursion'.

Langdale has played a key role in the development of the conservation movement in the Lake District from the early 20th century. Many of the farms in the valley were purchased by benefactors including Beatrix Potter and G. M. Trevelyan in order to preserve the traditional agro-pastoral way of life and these were subsequently passed on to the National Trust. The result of these early conservation initiatives has been that the National Trust owns and manages extensive areas of the valley bottom in Langdale and over the years has also had considerable influence on management of the Common Land in the valley.

Agro-pastoral agriculture and the early conservation movement are the strongest themes of Outstanding Universal Value in the Langdale Valley but it has also provided aesthetic inspiration, especially for Romantic writing.



FIGURE 1.13 View of the farms, inbye and intake fields in Little Langdale. Little Langdale Tarn is visible to the left.