

Nomination of  
**THE ENGLISH LAKE DISTRICT**

For inscription on the  
World Heritage List



Lake District  
National Park  
Partnership



## CONTENTS

0.	Introduction	04
1.	Langdale	10
2.	Windermere	34
3.	Coniston	85
4.	Duddon	134
5.	Eskdale	165
6.	Wasdale	192
7.	Ennerdale	221
8.	Buttermere	247
9.	Borrowdale and Bassenthwaite	274
10.	Thirlmere	321
11.	Ullswater	345
12.	Haweswater	384
13.	Grasmere, Rydal, Ambleside	412
	Glossary and Credits	452



Wasdale Head and West Water from the slopes of Great Gable

A landscape photograph showing a valley with a large mountain in the background. The foreground is a brown, grassy slope. The middle ground features a green valley with a small white building and a stone wall. The background is a large, rugged mountain under a cloudy sky. A white rectangular box is overlaid in the center of the image, containing the text "0. INTRODUCTION".

# 0. INTRODUCTION

# 0. INTRODUCTION

---

This volume is intended to complement and amplify the brief descriptions of the 13 English Lake District Valleys set out in Volume 1, Section 2.c of the Nomination. It provides the detailed supporting information considered to be appropriate to demonstrate how each valley contributes to the whole Lake District's Outstanding Universal Value. The detailed descriptions have been compiled as a separate volume to allow additional useful material to be presented, and to allow the evidence and argument in Volume 1 to flow between sections more easily. In essence, Volume 1 draws a brief but comprehensive preparatory sketch; Volume 2 paints the picture of each valley.

The order of valley descriptions follows that of Volume 1, and continues to be based on Wordsworth's imaginary spokes of a wheel. William Wordsworth identified 12 major valleys which could be seen from his vantage points of Great Gable/Scafell and the ridge of Helvellyn. In clockwise order these are, on the western side, Langdale-Windermere, Coniston, Duddon, Eskdale, Wasdale, Ennerdale, Buttermere-Crummock-Lorton and Borrowdale. Also in clockwise order, on the eastern side, Wordsworth lists the valleys of Wytheburn-St John's Vale (Thirlmere), Ullswater, Haweswater, and lastly the Vale of Grasmere-Rydal-Ambleside. The coast serves as the rim of Wordsworth's imaginary wheel on both the southern and western edges of the Lake District, while the lowlands of the Solway Plain and the river valleys of the Eden and Lune perform the same function on the northern and eastern sides.

In this description of the valleys, Wordsworth's subdivision of the Lake District landscape has been broadly followed, except that Langdale has been treated separately from Windermere. This helps to distinguish clearly between the valleys which meet at the head of Windermere, while Langdale, a major and distinctive valley, has a very different character from the main Windermere valley. Therefore 13 principal valleys are identified and described here, beginning with Langdale.

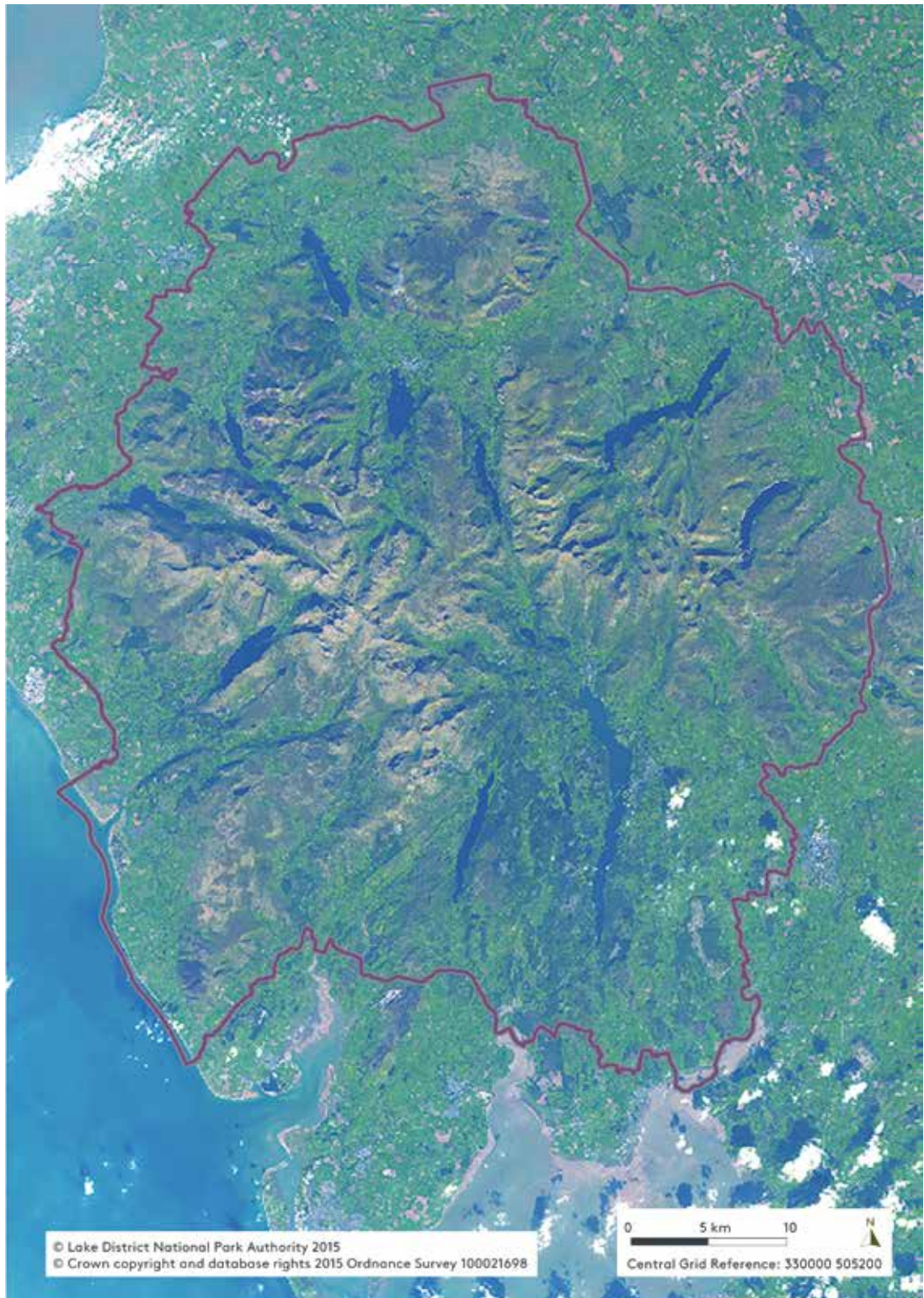
Each valley has its own distinctive character and features which contribute to the three intertwined themes which together combine to make the case for the English Lake District's proposed Outstanding Universal Value:

1. A landscape of exceptional beauty, shaped by persistent and distinctive agro-pastoral traditions which give it special character;
2. A landscape which has inspired artistic and literary movements and generated ideas about landscapes that have had global influence and left their physical mark
3. A landscape which has been the catalyst for key developments in the national and international protection of landscapes.

These three inseparable themes flow through the descriptive text presented below.

Volume 2 of the Nomination Document provides supporting information for the 'pen portraits' of the thirteen valleys of the English Lake District in Section 2.c of Volume 1. This includes more extensive descriptions of the valleys, their chronological

FIGURE 0.1 Satellite image of the English Lake District



□ Nominated Property boundary

Data available from the U.S. Geological Survey

FIGURE 0.2 The 13 valleys of the English Lake District, based on William Wordsworth's description in his 'Guide to the Lakes' (1835)



development and the attributes which contribute to the Outstanding Universal Value of the English Lake District.

The structure used for each valley is the same:

- a. Location map of the valley showing topography, main settlement pattern, and key attributes of Outstanding Universal Value related to each of three intertwining themes listed above;
- b. Cultural Landscape Map(s) showing the principal present (and some historical) land uses. The Cultural Landscape Maps incorporate data from the Lake District Historic Landscape Characterisation (HLC) project and other information collected from historic mapping. Some of the HLC categories have been amalgamated to reflect the rich cultural landscape of the English Lake District, including the functioning agro-pastoral system and areas of designed landscape.
- c. Table of presence/absence of attributes which contribute to Outstanding Universal Value identified in Figure 3.12 in Section 3 of Volume 1;
- d. Text describing the valley and its development, then its qualities, focusing on the attributes which contribute to Outstanding Universal Value;
- e. Map showing the registered common land, the location of different shepherds' flocks, whether they use the fell for grazing, and the breed of sheep. Where a farm has flocks registered with more than one Sheep Breeders' Association, it is depicted on the relevant map as 'Multiple Breeds'. Figures in the text relate to total numbers of flocks registered with the Herdwick Sheep Breeders Association (2014), the Rough Fell Sheep Breeders' Association (2013) and the Swaledale Sheep Breeders' Association (2013). Note that a small number of farms have more than one flock registered with the same Sheep Breeders' Association. These are depicted on the maps as a single dot, as are instances where two farms are very close to each other. The figures for fell-going flocks are for individual farms listed in the 'Lakeland Shepherds' Guide' (2005), although some of these have more than one fell-going flock.



**FIGURE 0.3** The Vale of Grasmere, at the heart of the English Lake District

**Note on references:** References have generally not been included in the text but are listed in the Bibliography in Volume 1. Those relating to individual valleys have been listed under valley subheadings in the Bibliography.



Wildflower meadow at High Nook Farm, Loweswater



**GLOSSARY  
AND CREDITS**

# GLOSSARY

---

**Adit** Horizontal mining tunnel cut into the fellside

**Afforestation** The establishment of a forest or stand of trees in an area where there was no forest

**Agistment** Originally referred specifically to the proceeds of pasturage in the king's forests. To agist is, in English law, to take cattle to graze.

**Agrarian** Cultivated land or the cultivation of land

**Agri-environment schemes** An environmental management scheme. A mechanism by which landowners and other individuals and bodies responsible for land management can be incentivised by government to manage their environment.

**Agro-pastoral** The form of farming that combines rearing livestock including both sheep and cattle, and growing crops including hay, cereals, and wood through pollarding and coppicing

**Arboreta** An arboretum (plural: arboreta) in a narrow sense is a collection of trees only. More commonly, today, an arboretum is a botanical garden containing living collections of woody plants intended at least partly for scientific study.

**Arctic char** Arctic char or Arctic charr (*Salvelinus alpinus*) is a cold-water fish in the family Salmonidae, native to alpine lakes and arctic and subarctic coastal

**Arête** A sharp mountain ridge or spur

**Arts and Craft movement** The Arts and Crafts movement was an international movement

in the decorative and fine arts that flourished in Europe and North America between 1880 and 1910. It began in Britain around 1880 and quickly spread across America and Europe before emerging finally as the Mingei (Folk Crafts) movement in Japan. It advocated the reform of art at every level and across a broad social spectrum, and it turned the home into a work of art.

**Assart** An encroachment of forest

**Barony** The estate of a feudal lord held of the Crown

**Bank Barn** A multi-purpose, two-storey barn, built on a hillside with entrances at both levels

**Belvedere** An architectural structure sited to take advantage of a fine or scenic view

**Bield** Drystone walled shelter to protect sheep during inclement weather on the open fell

**Black Death** The Black Death is the name given to a deadly plague (often called bubonic plague, but is more likely to be pneumonic plague) which was rampant in 14th century Europe

**Blast furnace** A smelting furnace in the form of a tower into which a blast of hot compressed air can be introduced from below. Introduced into the Lake District in the 18th century.

**Bloomery** A bloomery is a type of furnace once widely used for smelting iron from its oxides. The bloomery was the earliest form of smelter capable of smelting iron. Generally of medieval or earlier date.

**Bobbin Mills** A Bobbin Mill is a mill of Post Medieval date for manufacturing wooden bobbins for the textile industry

**Borough** Administrative division. In England, during the medieval period, many towns were granted self-governance by the Crown, at which point they became referred to as boroughs.

**Bronze Age** The Bronze Age is a time period (2000 BC – 800 BC) in British prehistory characterized by the use of bronze for making tools, weapons and ornaments

**Burgage** A medieval land term used in England and Scotland, well established by the 13th century. A burgage was a town ('borough') rental property (to use modern terms), owned by a king or lord. The property ('burgage tenement') usually, and distinctly, consisted of a house on a long and narrow plot of land (Scots, toft), with a narrow street frontage.

**Burgesses** A political official or representative in a borough

**Byre** A type of barn for keeping cattle

**Chasers (tups)** Tups which are sent to the fells with the ewes to catch any sheep that return in season

**Cistercian** A Cistercian is a member of the Cistercian Order, a religious order of monks and nuns

**Classical** Relating to ancient Greek or Latin literature, art, or culture or the influence of Greek or Roman culture in later periods

**Clipping time** Sheep shearing

**Closehead** Underground cavern created by mining (usually of slate)

**Cobbles** Cobblestones are stones that were frequently used in the pavement of early streets. 'Cobble', the diminutive of the archaic English word 'cob', meaning 'rounded lump', originally referred to any small stone rounded by the flow of water; essentially, a large pebble. It was these smooth 'cobbles', gathered from stream beds that paved the first 'cobblestone' streets in England.

**Combe** A combe (also spelled coombe or coomb and, in place-names, comb) can either refer to a steep, narrow valley, or to a small valley or large hollow on the side of a hill

**Coppice rotation** A form of forestry management in which a fast-growing species of tree or woody shrub is grown specifically to provide timber poles which can be used for various purposes including the production of charcoal

**Corpse way** Traditional routes along which funeral processions made their way to the church

**Corrie** A hollowed out landscape feature created by glaciation in high mountains. Also known as cirque.

**Crucks** Pairs of naturally arched timbers, pegged together at the apex to form a frame for a house or barn

**Cumberland** Name of former county which became part of the county of Cumbria in 1974

**Curlew** A type of bird characterised by a long, slender, down curved bill and mottled brown plumage

**Customary Tenure** Customary land is land which is owned by Indigenous communities and administered in accordance with their customs, as opposed to statutory tenure usually introduced during the colonial

periods. Common ownership is one form of customary land ownership.

**Dipping/Dipped** Washing sheep in a special liquid (sheep dip) that kills off harmful insects living in their wool

**Dissolution of the Monasteries** The Dissolution of the Monasteries, sometimes referred to as the Suppression of the Monasteries, was the set of administrative and legal processes between 1536 and 1541 by which Henry VIII disbanded Catholic monasteries, priories, convents and friaries in England, Wales and Ireland, appropriated their income, disposed of their assets, and provided for their former members and functions

**Down house** The service area of a farm house

**Drafted (sheep)** Sheep that are sold for meat or to other breeders

**Echelons** A level or rank in an organization, a profession, or society

**Ecosystem services** Humankind benefits in a multitude of ways from ecosystems. Collectively, these benefits are becoming known as ecosystem services. Ecosystem services are regularly involved in the provisioning of clean drinking water and the decomposition of wastes.

**Environmentalism** A broad philosophy, ideology and social movement regarding concerns for environmental protection and improvement of the health of the environment, particularly as the measure for this health seeks to incorporate the concerns of non-human elements

**Estovers** Wood or timber that a tenant is allowed to take

**Ewe** A female sheep that has had her first lamb

**Farmstead** A farm and its buildings

**Fell** A fell (from Old Norse fell, fjall) is a high and barren landscape feature such as a mountain or moor-covered hill

**Feudal** The concept of a feudal state or period, in the sense of either a regime or a period dominated by lords who possess financial or social power and prestige, became widely held in the middle of the 18th century

**Fire house** The living area of a farm house

**Flax Mill Industry** Flax mills are mills concerned with the manufacture of flax. The earliest mills were for spinning yarn for the linen industry.

**Flock** A group of sheep

**Fodder** Feed for livestock, especially coarsely chopped hay or straw

**Folly** A building constructed primarily for decoration, but suggesting through its appearance some other purpose, or appearing to be so extravagant that it transcends the range of garden ornaments usually associated with the class of buildings to which it belongs

**Fulling** Fulling, also known as tucking or walking, is a step in making woollen cloth which involves the cleansing of cloth (particularly wool) to eliminate oils, dirt, and other impurities, and making it thicker

**Gimcrack** Something that is showy but cheap or badly made

**Gimmer** A young female sheep, usually before her first lamb

**Gough Map** The Gough Map or Bodleian Map is a map of the island of Great Britain, dating between 1355 and 1366, and is the oldest surviving route map of Great Britain

**Granary** A storehouse for threshed grain

**Grange** Monastic sheep farm

**Harmonious beauty** A view of high scenic quality where the characteristics of the landscape (or other entity) are 'in harmony'; that is they are consistent with that particular landscape character type

**Hay** Grass that has been mown and dried for use as fodder

**Headwalls** A small retaining wall placed at the outlet of a stormwater pipe or culvert

**Hefted** Or heafed. The instinct in some breeds of sheep to keep to a certain heft or heaf (a small local area) throughout their lives. Allows different farmers in an extensive landscape such as moorland to graze different areas without the need for fences, each ewe remaining on her particular area. Lambs usually learn their heft from their mothers.

**Herdwick sheep** The Herdwick is an upland breed of sheep native to the Lake District of Cumbria in North West England. The name 'Herdwick' is derived from the Old Norse *herdvyck*, meaning sheep pasture.

**Hog-back tombstones** Hogback tombstones are stone carved Anglo-Scandinavian sculptures from 10th-12th century England and Scotland. Hogbacks fell out of fashion by the beginning of the 11th century. Their function is generally accepted as grave markers.

**Hogg** Also known as hogget or hogg. A young sheep of either sex from about 9 to 18 months of age (until it cuts two teeth).

**Hogg hole** Square holes left in the base of a dry stone wall to allow hogs to pass through

**Hogg house** Small building for storing fodder and for sheltering sheep in winter

**Hundred** A division of a shire for judicial purposes – used as the geographical area for assessment between Parish (smaller) and County (larger) before the introduction of Districts in the local Government Act of 1894

**Hushing** An ancient method of mining using a flood of water to wash off top soil in order to reveal mineral veins

**Inbye** A small number of enclosed fields in, or close to, the valley bottom and made up of meadows and pastures

**Incomers** A person who has come to live in an area in which they have not grown up, especially in a close-knit rural community. Also called offcomers in Cumbria.

**Intake** An enclosed area of land between the inbye and open fell

**Iron Age** The Iron Age is a time period (800 – 100 BC) in British prehistory characterized by the use of iron for making tools and weapons

**Lakeland** Alternative name for the English Lake District

**Land use** Land use involves the management and modification of natural environment or wilderness into built environment such as settlements and semi-natural habitats such as arable fields, pastures, and managed woods

**Late or Upper Palaeolithic** The Late or Upper Palaeolithic (or Upper Palaeolithic, Late Stone Age) is the third and last subdivision of the Paleolithic or Old Stone Age as it is understood in Europe, Africa and Asia. In the Lake District this dates from c. 12,000 BC to c. 8000 BC.

**Lonning** A Cumbrian word for a lane

**Lug/ear marks** Distinctive cuts to the ears (lug), which along with daubs of colour applied to the fleece (smit marks) are

used to identify the owner of the sheep

**Lye** Alkaline powder produced by burning bracken and brushwood. Mixed with tallow to make soap for cleaning woollen fleeces as part of the fulling process.

**Lynchets** A ridge or ledge formed along the downhill side of a plot by ploughing in ancient times

**Manor** Self-sufficient medieval estate under the control of a lord

**Manorial court** Court appointed by the lord to administer customary law

**Massif** A compact group of mountains

**Medieval** The Middle Ages or Medieval period in England lasted from 1066 AD – c. 1600 AD

**Merlin** A bird of prey

**Mesolithic** Relating to or denoting the middle part of the Stone Age (c. 8000 BC – c. 4000 BC), between the Palaeolithic and Neolithic

**Messuage** A dwelling house with outbuildings and land assigned to it

**Monastic** Relating to monks, nuns, or others living under religious vows, or the buildings in which they live

**Montane** Mountainous, usually above 600 meters in the Lake District

**Mule** A type of cross-bred sheep, both hardy and suitable for meat

**Neo-classical** Any of a number of movements in the fine arts, literature, theatre, music, and architecture beginning in the 17th century

**Neolithic** Relating to or denoting the later part of the Stone Age – the New Stone Age (c. 4000 BC – c. 2000 BC), when ground or polished stone

weapons and implements prevailed and agriculture was introduced

**Norse** Relating to medieval Norway or Scandinavia

**Ordnance Survey** The national mapping agency for the United Kingdom

**Outcrops** A rock formation that is visible on the surface

**Packhorse Route** Routes over mountainous terrains, previously used to transport goods by packhorse

**Pastoral** Land used for the keeping or grazing of sheep or cattle

**Peat hut or scale** Small stone building on the fell, near the peat cuttings, used for drying and storing peat until it was needed

**Pele Tower** Small fortified keeps or towers added to buildings for protection

**Pinfolds** A high-walled and lockable structure served several purposes; the most common use was to hold stray sheep, pigs and cattle until they were claimed by the owners

**Picturesque landscape** Meant literally, a scene which would make a painting, but it came to be used outside the context of art and painting, having a major influence on garden design, landscape fashions and ornamental walks

**Picturesque Movement** A reaction to the Classical Revival Style of architecture that included irregularly planned landscapes, follies, grottos, and asymmetrical buildings, mostly in the Italianate style

**Pigsty** A pen or enclosure for a pig or pigs

**Pinetum** (Plural: pineta)  
A plantation of pine trees or other conifers planted for scientific or ornamental purposes

**Pollard** To cut off the top and branches of a tree to encourage new growth at the top

**Post Medieval** The period from c. 1600 AD to the present

**Potash kiln** Potash kilns were lined with drystone walling and used to produce potash prior to the Industrial Revolution. Potash was mixed with tallow to produce a soap to clean the fleeces of sheep as a stage in the production of woollen cloth.

**Pre-classical** Relating to a time before a period regarded as classical, especially in music, literature, or ancient history

**Raddle** Colour marking or harness that is put on a tup (ram) during tupping season. Markings are changed regularly so the ewes can be sorted by lambing date.

**Radiocarbon dating**  
Radiocarbon dating is one of the most widely used scientific dating methods in archaeology and environmental science. It can be applied to most organic materials and spans dates from a few hundred years ago right back to about 50,000 years ago.

**Ram** An uncastrated adult male sheep. Also known as a tup.

**Regatta** A regatta is a series of boat races. The term typically describes racing events of rowed or sailed water craft, although some powerboat race series are also called regattas.

**Ridge and furrow cultivation**  
An agricultural pattern of ridges and furrows, surviving as earthworks, resulting from repeated ploughing. Also known as Rig and Furrow in the north of England. Ridge and furrow is typical of open field cultivation and can date from the medieval period to the 18th century.

**Right of turbary** Turbary is the ancient right to cut turf, or peat, for fuel on a particular area of bog

**Ring cairn** A low, wide, circular ring or bank of stones surrounding an open, roughly circular area which is (or was initially) free of cairn material. The inner and outer faces of the bank may be kerbed. Generally dating to the Bronze Age and possibly used for burial and/or ritual activity.

**Ring garth** Stone wall or fence dividing cultivated valley-bottom fields from open, grazed fell land. Also known as a head dyke in Scotland.

**Ring Ouzel** 'Ouzel' (or 'ousel') is an old name for common blackbird from Old English osle

**Romano-British** The culture that developed in Britain as a result of the fusion of imported Roman culture with that of the late Iron Age native British population (between the first and 5th centuries AD)

**Romantic Movement**  
Romanticism (also the Romantic era or the Romantic period) was an artistic, literary, and intellectual movement that originated in Europe toward the end of the 18th century and reached its peak in most areas c. 1800 to 1850. It was partly a reaction to the social and political norms of the Age of Enlightenment, the Industrial Revolution and the scientific rationalization of nature. Its principal influence was in the visual arts, music, and literature, but it also had a major impact on education and the natural sciences. It also had a major effect on politics and while it was initially associated with liberalism and radicalism it was also associated with the growth of nationalism.

**Rough Fell Sheep** The Rough Fell is an upland breed of sheep, originating in England. Its distribution embraces a large part of southern Cumbria.

**Scale** Building on high fell pasture occupied during the summer months

**Schelly** The schelly (*Coregonus stigmaticus*) is a designation

for four populations of freshwater whitefish in the English Lake District, Cumbria

**Sedimentary** Sedimentary rocks are types of rock that are formed by the deposition of material at the Earth's surface and within bodies of water

**Seine Nets** Is a method of fishing that employs a seine or dragnet. A seine is a fishing net that hangs vertically in the water with its bottom edge held down by weights and its top edge buoyed by floats. Seine nets can be deployed from the shore as a beach seine, or from a boat.

**Shearlings** A yearling sheep before its first shearing. Also known as hogget or old-season lamb.

**Sheepcotes** A pen or enclosure for sheep

**Sheep shearing** The process by which the woollen fleece of a sheep is cut off

**Shieling** Fell pasture and small dwelling used during the summer months

**Shepherds Meet** Traditional gathering of sheep farmers to swap strays, hold competitions for classes of sheep and to socialise

**Shippons** A cattle shed, also known as a byre

**Silage** Fermented, high-moisture stored fodder which can be fed to ruminants

**Smit marks** Daubs of colour applied to the fleece which along with distinctive cuts to the ears (lug marks) are used to identify the owner of the sheep

**Statesman** Yeoman farmer holding his land by customary tenure from the lord

**Stock** General terms for farm animals

**Sublime movement** An aesthetic quality in nature (landscape) distinct from beauty where (perceived)

ugliness, in its capacity to instill feelings of intense emotion, (fear and attraction) ultimately creates a pleasurable experience. The literary concept of the sublime became important in the 18th century. It is associated with the 1757 treatise by Edmund Burke, though it has earlier roots. The idea of the sublime was taken up by Immanuel Kant and the Romantic poets, especially William Wordsworth.

**Subsistence Farmer** Subsistence agriculture is self-sufficiency farming in which the farmers focus on growing enough food to feed themselves and their families

**Swaledale Sheep** The Swaledale is an upland breed of sheep named after the Yorkshire valley of Swaledale in England

**Swards** An expanse of grass

**Tanning** The process of treating skins and hides of animals to produce leather, which is more durable and less susceptible to decomposition

**Tarn** A mountain lake or pool, often formed in a cirque or corrie

**Tenements** A piece of land held by an owner

**Thing Mound** A 'Thing' (from the Old Norse and Old English 'Þing') is the site of a Norse assembly for law-giving and settlement of disputes. Sometimes marked by the construction of a terraced mound but often utilizing natural features. Sometimes called a 'Moot'.

**Threshing** The process of loosening the edible part of cereal grain (or other crop) from the inedible chaff that surrounds it. It is the step in grain preparation after harvesting and before winnowing, which separates the loosened chaff from the grain.

**Through stones** Stones used in drystone wall construction, placed at right angles to the wall faces, spanning both faces of the wall, sometimes projecting, and having the effect of tying the two faces of the wall together

**Transhumance** Is the seasonal movement of people with their livestock between fixed summer and winter pastures

**Truncated spur** Is a ridge that descends towards a valley floor or coastline from a higher elevation, that ends in an inverted-V face and was produced by the erosional truncation of the spur by the action of streams, waves, or glaciers. Truncated spurs can be found within mountains, along the walls of river valleys, or along coastlines.

**Tudor period** The rule of the Tudor dynasty in England and Wales between 1485 and 1603

**Tup** An uncastrated adult male sheep used for breeding. Also known as a ram.

**Tupping** The time of year when the rams (tups) are released with the ewes for mating

**Turnpike system** A turnpike was a toll road, a public or private road, where a fee is paid for passage

**Vaccary** A combined dairy and stock farm of the medieval period. Vaccaries typically had a herd of around 40 milk/breeding cows, plus their 'followers' (young beasts up to around three years old) and a couple of bulls. They were dairy farms in that the cows were milked and the milk was sold but, since young stock were kept until they matured into either breeding cows or oxen, they were also stock-rearing farms.

**Vendace** An edible whitefish found in lakes in northern Europe. In Britain it is now confined to two lakes in the English Lake District.

**Vernacular Architecture** concerned with domestic and functional rather than public or monumental buildings

**Viewing station** A location to 'view' the landscape, popular in the second half of the 18th century with tourists seeking Picturesque landscapes. At viewing stations, visitors would turn their backs to the landscape, hold up a mirror known as a Claude Glass and look at the framed and transformed view. The mirror would make the scene easier to draw and record.

**Villa** A term for a type of house, with varying definitions according to period. In England, in the 18th century, the term generally refers to a large and luxurious country house in its own grounds.

**Volcanic tuff** A pyroclastic, consolidated rock composed of compacted and cemented volcanic ash, from volcanic eruptions

**Westmorland** Name of former county which became part of the county of Cumbria in 1974

**Water heck** A stock-proof barrier across a watercourse where it crosses a field boundary, which allows the water to pass through. Typically a section of rail fencing suspended below a rail, spanning a watercourse between two wall ends. Some older slate rail examples exist.

**Wether** Male sheep that has been castrated

**Winnowing** To blow a current of air through grain in order to remove the chaff

## CREDITS

### FRONT COVER

©National Trust/Paul Harris

©National Trust/Chee-Wai Lee; Figure 1.11 ©HF Holidays; Figure 1.12 ©Val Corbett Photography; Figure 1.13 ©LDNPA/John Hodgson;

### SECTION OPENER IMAGES

Introduction ©Andrew Locking; 1. Langdale ©Andrew Locking; 2. Windermere ©Historic England; 3. Coniston ©National Trust/Paul Harris; 4. Duddon ©LDNPA/John Hodgson; 5. Eskdale ©LDNPA/John Hodgson; 6. Wasdale ©Andrew Locking; 7. Ennerdale ©Andrew Locking; 8. Buttermere ©Andrew Locking; 9. Borrowdale and Bassenthwaite ©Andrew Locking; 10. Thirlmere ©Andrew Locking; 11. Ullswater ©Andrew Locking; 12. Haweswater ©Si Homfray; 13. Grasmere, Rydal ©Si Homfray; Glossary and Credits ©Andrew Locking; Figure 0.3 ©Andrew Locking;

### LANGDALE

Figure 1.1 ©Val Corbett Photography; Figure 1.5 ©LDNPA/John Hodgson; Figure 1.6 ©LDNPA/John Hodgson; Wallthwaite, Chapel Stile ©LDNPA/Jamie Green; Raw Head, Great Langdale ©LDNPA/Historic England; Blea Tarn House ©LDNPA/Andy Lowe; The Bield, Little Langdale ©LDNPA/Jamie Green; High Birk Howe, Little Langdale ©LDNPA/Jamie Green; Fell Foot Farm, Little Langdale ©Val Corbett Photography; Wall End Farm, Gt Langdale ©LDNPA/Historic England; Figure 1.8 ©Val Corbett Photography; Eltermere Hotel ©LDNPA/Historic England; High Close ©LDNPA/Jamie Green; Brathay How, Loughrigg ©LDNPA/Jamie Green; Figure 1.9 ©LDNPA/John Hodgson; Figure 1.10

### WINDERMERE

Figure 2.7 ©Val Corbett Photography; Figure 2.8 ©Andrew Locking; Figure 2.9 ©LDNPA/Jamie Green; Figure 2.11 ©National Trust NTPL/Rob Talbot; Wood Farm, Troutbeck ©LDNPA/Historic England; Hodge Hill Hall, Cartmel Fell ©LDNPA/Historic England; The Causeway Farm, Windermere ©LDNPA/Historic England; Robin Lane Cottages, Troutbeck ©LDNPA/Historic England; Low Sadgill, Longsleddale ©LDNPA/Historic England; Pool Bank Farm, Crosthwaite ©LDNPA/Historic England; Town Foot farmhouse, Troutbeck ©LDNPA/Historic England; Fusethwaite Yeat, Troutbeck Bridge ©LDNPA/Historic England; Town End ©John Mcfarlane; Plumgarths Cottages ©LDNPA/Historic England; Figure 2.12 ©LDNPA/Andy Lowe; Figure 2.13 ©LDNPA/John Hodgson; Figure 2.14 ©LDNPA/Sam Hagon; Figure 2.15 ©LDNPA/John Hodgson; Figure 2.16 ©LDNPA/H.E.R.; Belle Isle ©LDNPA/John Hodgson; Elleray Bank, Windermere ©Elleray Bank (Windermere) Flat Management Co Ltd; Cleeve Howe, Windermere ©LDNPA/Jamie Green; Blackwell ©Val Corbett Photography; Wansfell Holme, Waterhead ©LDNPA/Historic England; Belsfield Hotel in Bowness ©LDNPA/Historic England; Brockhole ©Val Corbett Photography; Birket Houses, near Winster ©LDNPA/Andy Lowe; Broadleys ©LDNPA/Historic England; Broughton Lodge, Field Broughton ©LDNPA/Historic England; Cragwood ©Val Corbett Photography; Dove Nest ©LDNPA/Historic England; Elleray, Windermere

©Windermere School; Holehird ©Val Corbett Photography; Langdale Chase ©LDNPA/Historic England; Moor Crag ©LDNPA/Historic England; Oakland, Windermere ©Andrew K Cheetham; Wynlass Beck, Windermere ©LDNPA/Historic England; The Corbels, Heathwaite, Windermere ©LDNPA/Jamie Green; Storrs Hall ©LDNPA/Andy Lowe; Shrublands, Windermere ©LDNPA/Jamie Green; Figure 2.17 ©Martin Norgate; Figure 2.18 Original cover of Swallows and Amazons, Arthur Ransome/Stephen Spurrier ©The Arthur Ransome Literary Estate and Penguin Random House. 2015; Figure 2.19 ©LDNPA/Andy Lowe; Figure 2.20 ©Val Corbett Photography; Figure 2.21 ©Val Corbett Photography;

## CONISTON

Figure 3.5 ©Val Corbett Photography; Figure 3.6 ©Nick Thorne, Bodian Photography; 3.7 Figure ©Val Corbett Photography; Figure 3.8 ©Teresa Morris; Coniston Hall ©Val Corbett Photography; Yew Tree Farm ©Val Corbett Photography; Low Hall Garth ©LDNPA/Jamie Green; Abbot Park Farmhouse ©LDNPA/Historic England; Bridge End ©LDNPA/Jamie Green; High Yewdale ©LDNPA/Historic England; Low Yewdale ©LDNPA/Historic England; Low Tilberthwaite ©LDNPA/Historic England; Parkamoor Farm ©Nick Thorne Bodian Photography; High Arnside ©LDNPA/Historic England; Hoathwaite farm ©LDNPA/Historic England; Low Arnside ©LDNPA/Historic England; High Ground Farm, Hoathwaite ©LDNPA/Jamie Green; Hawes Farm ©LDNPA/Historic England; Lumbholme ©LDNPA/Jamie Green; Town End Farmhouse and outbuildings ©LDNPA/Historic England; High Bethacar ©LDNPA/Historic England; Bank End, Torver ©LDNPA/Jamie Green; Troughton Hall ©LDNPA/Jamie Green; High Hall Garth ©LDNPA/Jamie Green; Figure 3.10 ©LDNPA/John Hodgson; Figure 3.11 ©Andrew Locking; Figure 3.12 ©LDNPA/Historic England; Figure 3.13 ©Val Corbett Photography; Belmont Hall ©LDNPA/Jamie Green; Brantwood ©Teresa Morris; Brathay Hall ©LDNPA/Historic England; Monk Coniston ©LDNPA/Historic England; Broughton Tower and designed landscape ©LDNPA/Historic England; Esthwaite Lodge ©LDNPA/Historic England; Finsthwaite House ©LDNPA/Historic England; Graythwaite New Hall ©LDNPA/Historic England; Rusland Hall ©LDNPA/Andy Lowe; Wray Castle ©LDNPA/Historic England; Bigland Hall ©LDNPA/Jamie Green; Figure 3.14 ©Nick Thorne, Bodian Photography; Figure 3.15 ©LDNPA/John Hodgson; Figure 3.16 ©Martin Norgate; Figure 3.17 "He went to look for two fox-hound puppies who were out at walk with the butcher" from *The Tale of Jemima Puddle-Duck*, 1908 ©Frederick Warne & Co. 2015; Figure 3.18 Beatrix Potter in Hill Top porch ©National Trust/Robert Thrift mounted photographic print of Beatrix Potter standing in the porch at Hill Top. She holds a straw hat in her hand. Dated c 1907-8; Figure 3.19 ©LDNPA/John Hodgson.

## DUDDON

Figure 4.5 ©LDNPA/John Hodgson; Figure 4.6 ©Rob Fraser/somewhere-nowhere.com; Figure 4.7 ©LDNPA/John Hodgson; Figure 4.9 ©Rob Fraser/somewhere-nowhere.com; Stangrah Farmhouse ©LDNPA/Historic England; Hesketh Hall ©LDNPA/Historic England; Hall Dunnerdale Farmhouse & Byres ©LDNPA/Historic England; Low Whineray Ground Farmhouse & Byre ©LDNPA/Owen Osmotherley; Stickle House Barn ©LDNPA/Owen Osmotherley; Under Crag ©LDNPA/Owen Osmotherley; Beckstones ©LDNPA/Owen Osmotherley; Chappels Farmhouse and barn ©LDNPA/Owen Osmotherley; Hazel Head ©LDNPA/Owen Osmotherley; Cockley Beck ©LDNPA/Owen Osmotherley; Browside ©LDNPA/Owen Osmotherley; Dale Head ©LDNPA/Owen Osmotherley; Stephenson Ground ©LDNPA/Owen Osmotherley; Loganbeck Farmhouse ©LDNPA/Owen Osmotherley; Thrang ©LDNPA/Owen Osmotherley; Brighthouse ©LDNPA/Owen Osmotherley; Pike Side ©LDNPA/Owen Osmotherley; Troutal Farm ©LDNPA/Owen Osmotherley; Black Hall Farm ©LDNPA/John Hodgson; High Wallowbarrow ©LDNPA/Owen Osmotherley; Tongue House ©LDNPA/Owen Osmotherley; Baskill ©LDNPA/Owen Osmotherley; Figure 4.10 ©LDNPA/John Hodgson; Figure 4.11 ©Val Corbett Photography; Duddon Hall ©LDNPA/Historic England; Broadgate ©LDNPA/Historic England; Holme Cottage ©LDNPA/Historic England; Figure 4.12 ©Val Corbett Photography; Figure 4.13 ©LDNPA; 4.14 ©Historic England; 4.15 ©LDNPA/John Hodgson; Figure 4.16 ©Historic England; Figure 4.17 ©Historic England;

## ESKDALE

Figure 5.5 ©Nick Thorne Bodian Photography; 5.6 ©LDNPA/Sam Hagon; Figure 5.7 ©Historic England; Figure 5.9 ©Rob Fraser/somewhere-nowhere.com; Dalegarth Hall ©LDNPA/John Hodgson; Building west of Cropple Howe Farmhouse ©LDNPA/Owen Osmotherley; Brotherilkeld ©LDNPA/Owen Osmotherley; Yattus, Eskdale Green ©LDNPA/Historic England; Long Rigg Farm ©LDNPA/Andy Lowe; Field Head Farm ©National Trust; Wha House Farm ©LDNPA/Owen Osmotherley; Taw House Farm ©LDNPA/Owen Osmotherley; Gill Bank Farm ©Nick Thorne Bodian Photography; Penny Hill Farm ©National Trust; Birdhow Cottage ©National Trust; Brant Rake ©LDNPA/Owen Osmotherley; Bridge End Farmhouse ©LDNPA/Owen Osmotherley; Figure 5.10 ©Val Corbett Photography; Figure 5.11 ©Val Corbett Photography; Gatehouse ©Val Corbett Photography; Figure 5.12 ©LDNPA/Charlie Hedley; Figure 5.13 ©Martin Watts; Figure 5.14 ©Historic England

## WASDALE

Figure 6.5 ©Val Corbett Photography; Figure 6.6 ©Andrew Locking; Figure 6.7 ©Val Corbett Photography; Figure 6.8 ©Val Corbett Photography; Figure 6.10 ©Val Corbett Photography; Hall Santon Farmhouse ©LDNPA/Historic England; Woodhow Farmhouse ©LDNPA/Historic England; Stangends ©LDNPA/Historic England; Row Head Farm ©LDNPA/Mike Turner; Hollins ©National Trust; Harrowhead Farm ©LDNPA/Mike Turner; Burnthwaite Farm ©National Trust; High Thistleton ©LDNPA/Mike Turner; Crag House ©LDNPA/Mike Turner; Buckbarrow Barn and Cottage ©LDNPA/Mike Turner; Kidbeck Farm ©LDNPA/Mike Turner; Burnt House ©Elaine Richardson; Middle Row ©LDNPA/Mike Turner; Wasdale Head Hall ©LDNPA/Mike Turner; Gaterigghow House ©LDNPA/Mike Turner; Figure 6.11 ©Val Corbett Photography; Wasdale Hall ©LDNPA/Mike Turner; Carleton Hall ©LDNPA/Historic England; Gale Syke ©LDNPA/Mike Turner; Carleton Green ©LDNPA/Historic England; Gosforth Hall ©LDNPA/Historic England; Greenlands ©LDNPA; Irton Hall ©LDNPA/Historic England; Low Wood Hall ©LDNPA/Mike Turner; Steelfield Hall ©LDNPA/Historic England; Figure 6.12 Edward Lear Distant View of Wasdale Head with Yewbarrow, Great Gable and Lingmill. ©The Wordsworth Trust, purchase 2003, with the support of the Art Fund and the W. W. Spooner Charitable Trust; Figure 6.13 ©Val Corbett Photography; Figure 6.14 ©Ron Kenyon

## ENNERDALE

Figure 7.4 ©Historic England; Figure 7.5 ©Val Corbett Photography; High Gillerthwaite ©LDNPA/Mike Turner; Bowness ©LDNPA/Mike Turner; Longmoor Head ©Richard Foster; How Hall Farm ©LDNPA/Mike Turner; Figure 7.7 ©Jamie Quartermaine; Figure 7.8 ©Val Corbett Photography; Figure 7.9 ©Historic England; Figure 7.10 ©LDNPA/Charlie Hedley; Figure 7.11 ©YHA; Figure 7.12 ©Si Homfray;

## BUTTERMERE

Figure 8.5 ©Historic England; Figure 8.6 ©Andrew Locking; Figure 8.7 ©Historic England; Figure 8.9 ©Rosamund Macfarlane; Hudson Place ©LDNPA/Historic England; Crag Farm, Buttermere ©LDNPA/Mike Turner; High Nook, Loweswater ©LDNPA/Historic England; Lorton Bridge House ©LDNPA/Historic England; Watergate Farm, Loweswater ©LDNPA/Mike Turner; Low Hollins ©John Macfarlane; High Hollins ©LDNPA/Historic England; Wilkinyske Farm ©LDNPA/Mike Turner; Lanthwaite Cottage ©LDNPA/Mike Turner; Figure 8.10 ©Andrew Locking; Lorton Park ©LDNPA/Historic England; Oak Hill ©LDNPA/Historic England; Figure 8.11 ©Martin Norgate; Figure 8.12 ©Andrew Locking; Figure 8.13 Buttermere

Lake, with Part of Cromackwater, Cumberland, a Shower, exhibited 1798. Joseph Mallord William Turner, (1775-1851) ©Tate, London 2015; Figure 8.14 ©Andrew Locking; Figure 8.15 ©Val Corbett Photography;

## BORROWDALE

Figure 9.7 ©LDNPA/Charlie Hedley; Figure 9.8 ©Val Corbett Photography; Figure 9.9 ©National Trust Images/Paul Harris; Figure 9.10 ©Andrew Locking; Orthwaite Hall ©LDNPA/Historic England; Hesketh Hall ©LDNPA/Neil Park; Routenbeck ©LDNPA/Andy Lowe; Hewthwaite Hall ©LDNPA/Historic England; Thwaite Hall, Hutton Roof ©LDNPA/Mike Turner; Todcrofts, Caldbeck ©LDNPA/Historic England; Seatoller Farm ©LDNPA/Mike Turner; Nook Farm ©LDNPA/Historic England; Wythop Hall ©LDNPA/Historic England; Caffle House, Watendlath ©LDNPA/Historic England; Dunthwaite House and barn ©LDNPA/Mike Turner; Brownrigg Farm, Caldbeck ©LDNPA/Mike Turner; Oak Cottage, Rosthwaite ©LDNPA/Historic England; Stonethwaite Farmhouse ©National Trust/Penny Webb; Croft Farm ©LDNPA/Historic England; Steps End Farm, Watendlath ©LDNPA/Mike Turner; Fold Head Farm, Watendlath (now John Greenhouse Farm) ©LDNPA/Mike Turner; Ashness Farm ©LDNPA/Historic England; Seathwaite farmhouse ©LDNPA/Historic England; Grange Farm ©LDNPA/Mike Turner; Yew Tree Farm, Rosthwaite ©LDNPA/Mike Turner; Millbeck Hall ©LDNPA/Historic England; Figure 9.12 ©LDNPA/John Hodgson; Figure 9.13 ©Val Corbett Photography; Figure 9.14 ©Martin Norgate; Figure 9.15 ©Historic England; Armathwaite Hall ©LDNPA/Historic England; Barrow House ©LDNPA/John Hodgson; Derwent Bank, Portinscale ©LDNPA/Mike Turner; Derwent Bay ©Historic England; Underscar Manor ©LDNPA/Historic England; Derwent Isle House ©LDNPA/Historic England; Greta Hall, Keswick ©LDNPA/Historic England; Mirehouse ©Val Corbett Photography; Overwater Hall ©LDNPA/Historic England; Higham Hall ©LDNPA/Historic England; Figure 9.16 ©National Trust Images/Simon Fraser; Figure 9.17 ©LDNPA/Charlie Hedley; Figure 9.18 ©'Keswick Lake', by Paul Sandby (c. 1780). ©The Wordsworth Trust, purchase 1991, with the support of the MGC/V&A Purchase Grant Fund; Figure 9.19 ©Andrew Locking; Figure 9.20 Brandelhow on Derwent Water, opening ceremony, 16 October 1902, please credit ©National Trust; Figure 9.21 ©LDNPA/Charlie Hedley; Figure 9.22 ©Ian Mallinson;

## THIRLMERE

Figure 10.4 ©LDNPA; Figure 10.5 ©Val Corbett Photography; Castlerigg Hall ©LDNPA/Neil Park; Hollin Root Old House ©LDNPA/Historic England; Stanah ©LDNPA/Historic England; Bram Crag ©LDNPA/Neil Park; Fornside ©LDNPA/Neil Park;

The Green, Legburthwaite ©LDNPA/Neil Park; Steel End ©LDNPA/Neil Park; West Head ©LDNPA/Neil Park; Brotto ©LDNPA/Historic England; 6 Fisher Place ©LDNPA/Neil Park; Dalehead Hall ©LDNPA/Historic England; Figure 10.7 ©Val Corbett Photography; Figure 10.8 ©LDNPA/Historic England; Figure 10.9 ©Val Corbett Photography; Figure 10.10 ©Val Corbett Photography; Figure 10.11 ©Val Corbett Photography; Figure 10.12 ©Teresa Morris;

## ULLSWATER

Figure 11.5 ©Ian Mallinson; Figure 11.6 ©National Trust/John Malley; Figure 11.7 ©Val Corbett Photography; Figure 11.8 ©Si Homfray; Figure 11.9 ©Teresa Morris; Thrang Crag ©LDNPA/Neil Park; Dalehead ©LDNPA/Neil Park; Hartsop Hall ©LDNPA/Historic England; Cote Farm, Martindale ©LDNPA/Neil Park; Aira farmhouse ©LDNPA/Historic England; Mains farmhouse ©LDNPA/Historic England; Glencoyne ©LDNPA/Mike Turner; Bank End ©LDNPA/Neil Park; Howe Green Farm ©LDNPA/Historic England; Hollins farmhouse & attached barn, Dockray ©LDNPA/Historic England; Townhead, including Townhead Cottage and Barn ©LDNPA/Historic England; Barton Church Farm ©LDNPA/Historic England; Winder Hall, near Barton ©LDNPA/Historic England; Figure 11.11 ©Teresa Morris; Figure 11.12 ©LDNPA/Historic England; Eusemere Hall ©LDNPA/Neil Park; Glenridding ©LDNPA/Andrew Smith; Leeming House ©LDNPA/Historic England; Lyulph's Tower ©LDNPA/Historic England; Hallsteads ©LDNPA/Historic England; Dalemmain ©LDNPA/Historic England; Patterdale Hall ©LDNPA/Historic England; Watermillock House ©LDNPA/Historic England; Figure 11.13 ©Martin Norgate; Figure 11.14 ©LDNPA/Historic England; Figure 11.15 Ullswater, Cumberland by J. M. W. Turner (1835) ©The Wordsworth Trust, purchase 2005, with the support of the National Heritage Memorial Fund, The Art Fund (with a grant from the Wolfson Foundation), the MLA/V&A Purchase Grant Fund, the Golden Charitable Trust, and an anonymous donor; Figure 11.16 ©Andrew Locking; Figure 11.17 ©Andrew Locking;

## HAWESWATER

Figure 12.4 ©Val Corbett Photography; Figure 12.5 ©Val Corbett Photography; Figure 12.6 ©Val Corbett Photography; Thornthwaite Hall ©Val Corbett Photography; Askham Gate Farm, in Askham village ©Val Corbett Photography; Stanegarh farmhouse, near Bampton ©LDNPA/Historic England; School Bank Cottage and Barn, in Askham ©Val Corbett Photography; Eastward, near Bampton ©LDNPA/Historic England; Grange Farm, Bampton Grange ©LDNPA/Historic England; Widewath farmhouse, near Askham ©LDNPA/Historic England; Figure 12.8 ©Val Corbett Photography; Figure

12.9 ©Val Corbett Photography; Figure 12.10 ©Val Corbett Photography; Figure 12.11 ©Val Corbett Photography; Figure 12.12 ©Val Corbett Photography; Figure 12.13 ©Photograph by Joseph Hardman, 1935. Courtesy of the Museum of Lakeland Life and Industry, Lakeland Arts Trust, Kendal.; Figure 12.14 ©Val Corbett Photography; Figure 12.15 ©Val Corbett Photography; Figure 12.16 ©Val Corbett Photography;

## GRASMERE, RYDAL, AMBLESIDE

Figure 13.4 ©Val Corbett Photography; Figure 13.5 ©LDNPA/Charlie Hedley; Figure 13.6 ©Val Corbett Photography; Brimmer Head Farm ©LDNPA/John Hodgson; Town Head Farm ©LDNPA/John Hodgson; High Skelghyll ©National Trust; Low Scorecrag ©National Trust; Rydal Hall Barns ©LDNPA; Rydal Park Barn ©LDNPA/Andy Lowe; Goody Bridge House and Barn ©LDNPA/Historic England; Figure 13.8 ©National Trust/Tony West; Figure 13.9 ©Val Corbett Photography; Figure 13.10 ©Val Corbett Photography; Figure 13.11 'John Constable, The Lower Cascade, Rydal 1806. ©Reproduced courtesy of Abbot Hall Art Gallery, Lakeland Arts Trust, Kendal, Cumbria'; Allan Bank, Grasmere ©National Trust/Paul Harris; Dale Cottage, Grasmere ©LDNPA/Jamie Green; Forest Side, Grasmere ©LDNPA; Fox Ghyll, Under Loughrigg ©LDNPA/Historic England; Fox Howe, Under Loughrigg ©LDNPA/Historic England; Glenthorne, Easedale ©LDNPA/Jamie Green; Helmside, Town Head, Grasmere ©LDNPA/Jamie Green; Howe Foot, Town End, Grasmere ©LDNPA/Jamie Green; Iveing Cottage, Ambleside ©LDNPA/Jamie Green; Ivy Cottage, Rydal ©LDNPA/Jamie Green; Lancrigg, Easedale ©LDNPA/Historic England; Lesketh How, Ambleside ©Lake District Estates Co Ltd; Loughrigg Brow, Loughrigg Fell ©LDNPA/David James; Miller Bridge House, under Loughrigg ©LDNPA/Jamie Green; Nanny Brow, Clappersgate ©Nanny Brow/Mark Chivers; Rothay Holme, Ambleside ©LDNPA/Jamie Green; Rydal Mount, Rydal ©Cumbria Tourist Board/Dave Willis; Scale How, Ambleside ©LDNPA/Historic England; Silverhowe, Grasmere ©LDNPA/Jamie Green; The Hollens, Grasmere ©LDNPA/Jamie Green; The Knoll, Ambleside ©LDNPA/Historic England; Wanlass How, Waterhead ©LDNPA/Jamie Green; White Craggs, Clappersgate ©White Craggs/William Evans; Croft Lodge, Clappersgate ©LDNPA/Historic England; Figure 13.12 ©LDNPA/John Hodgson; Figure 13.13 The Old Mill, Ambleside. Turner, Joseph Mallord William (1775-1851) ©University of Liverpool Art Gallery & Collections, UK/Bridgeman Images; Figure 13.14 ©Val Corbett Photography; Figure 13.15 ©National Trust/Steven Barber; Figure 13.16 ©Val Corbett Photography; Figure 13.17 ©LDNPA/Historic England; Figure 13.18 ©Andrew Locking; Figure 13.19 ©Historic England;